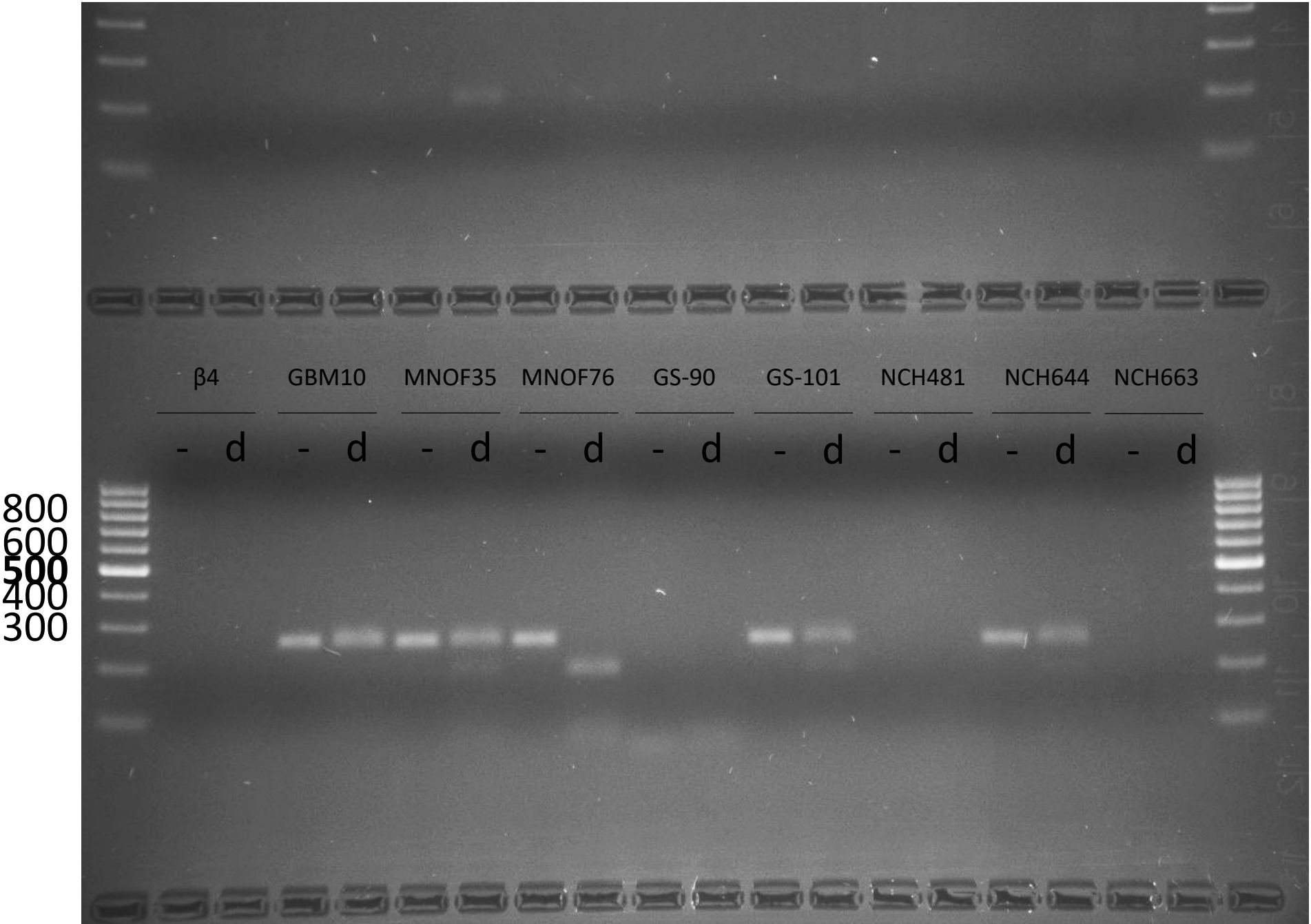


# Related to Figure 2

FokI

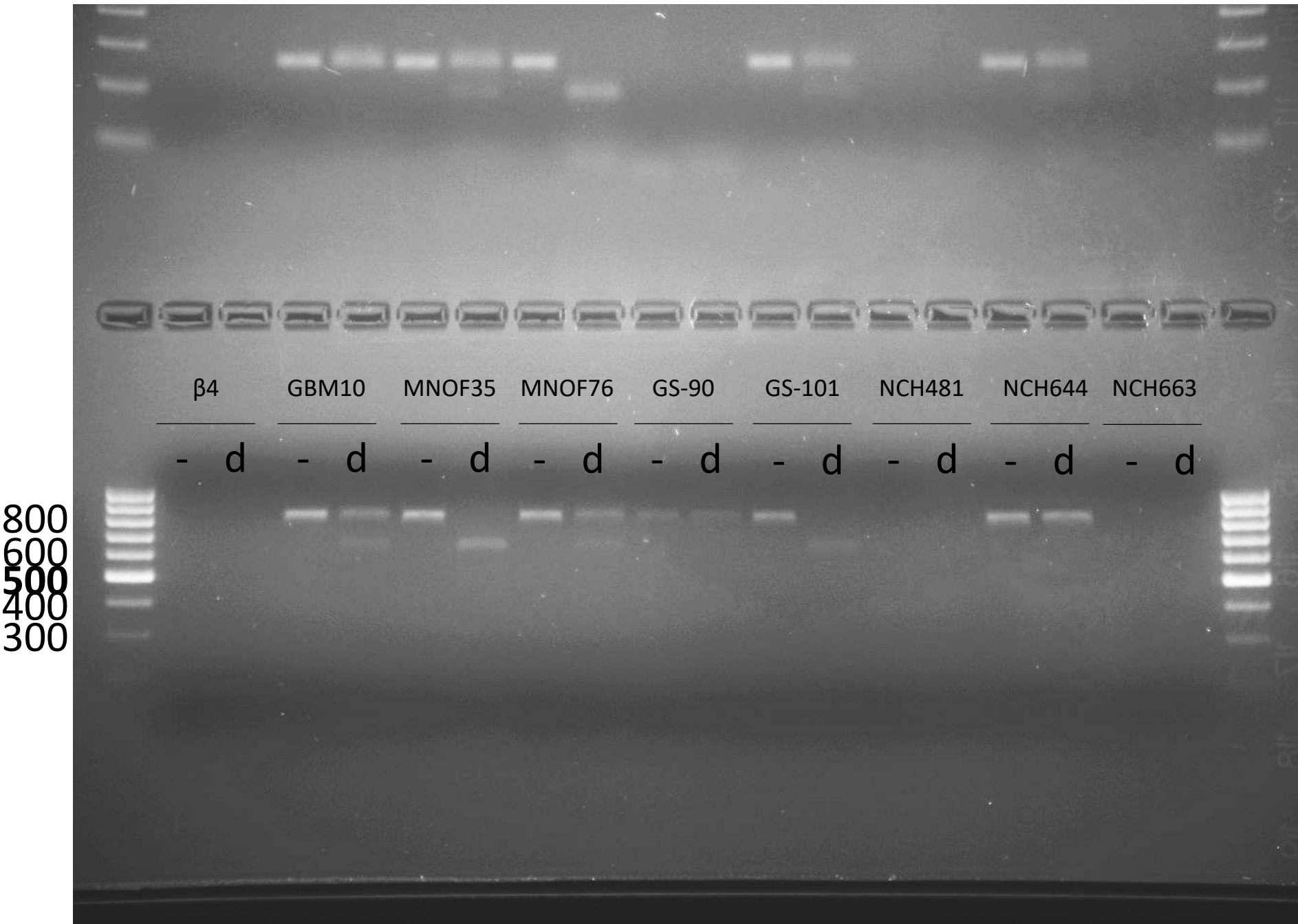


-: undigested; d: digested

Note: A 100 bp ladder was used. For the figure the image was cropped to display GBM10, MNOF35 and MNOF76 representing all VDR polymorphisms

# Related to Figure 2

BsmI

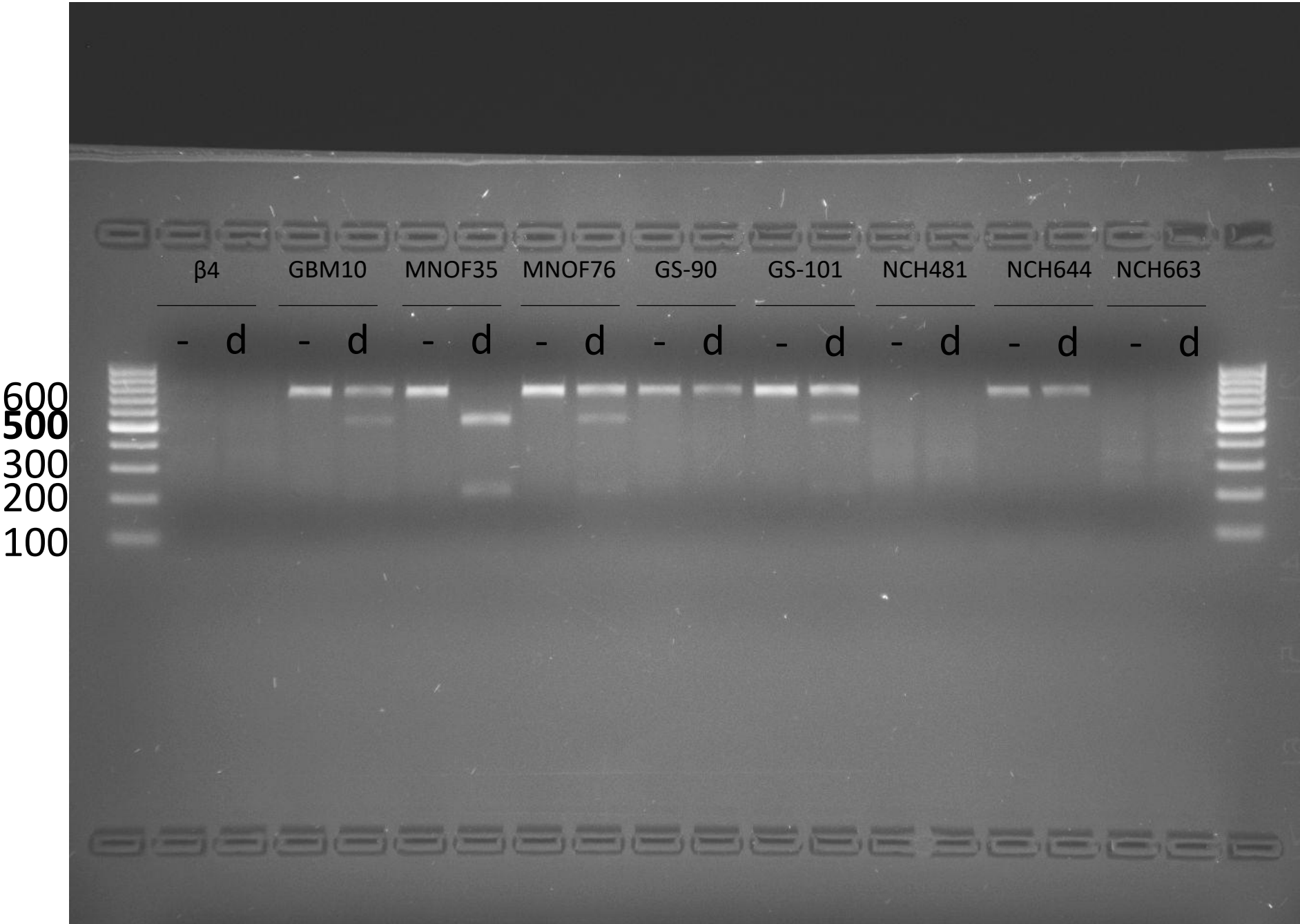


-: undigested; d: digested

Note: A 100 bp ladder was used. For the figure the image was cropped to display GBM10, MNOF35 and MNOF76 representing all VDR polymorphisms

Related to Figure 2

Apal

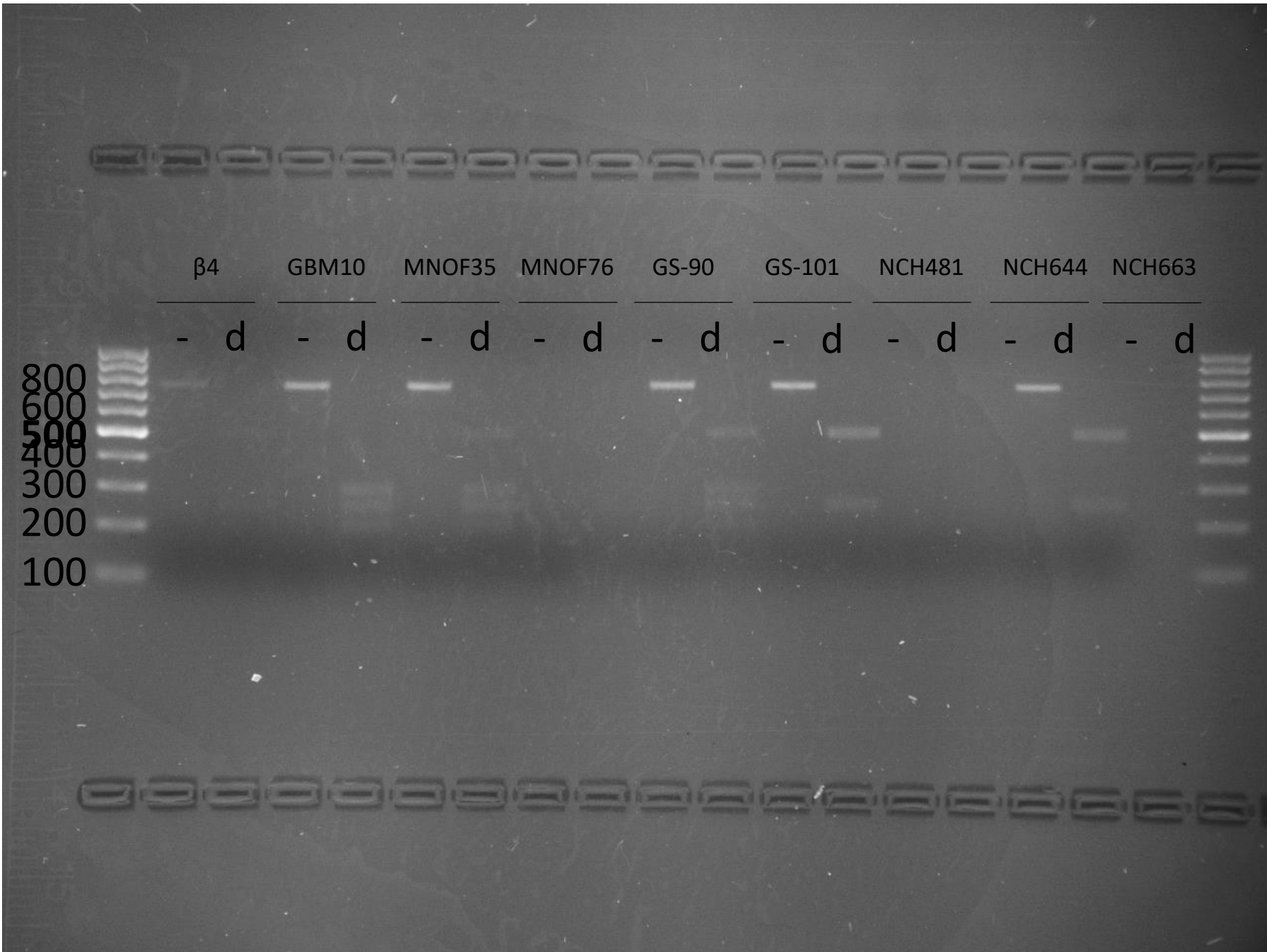


-: undigested; d: digested

Note: A 100 bp ladder was used. For the figure the image was cropped to display GBM10, MNOF35 and MNOF76 representing all VDR polymorphisms

# Related to Figure 2

TaqI



-: undigested; d: digested

Note: A 100 bp ladder was used. For the figure the image was cropped to display GBM10, MNOF35 and MNOF76 representing all VDR polymorphisms