

## **Supplementary Materials:**

**Synergistic combination of luteolin and asiatic acid on cervical cancer cells**

**Ya-Hui Chen, Jyun-Xue Wu, Shun-Fa Yang, Yi-Hsuan Hsiao**

Figure S1

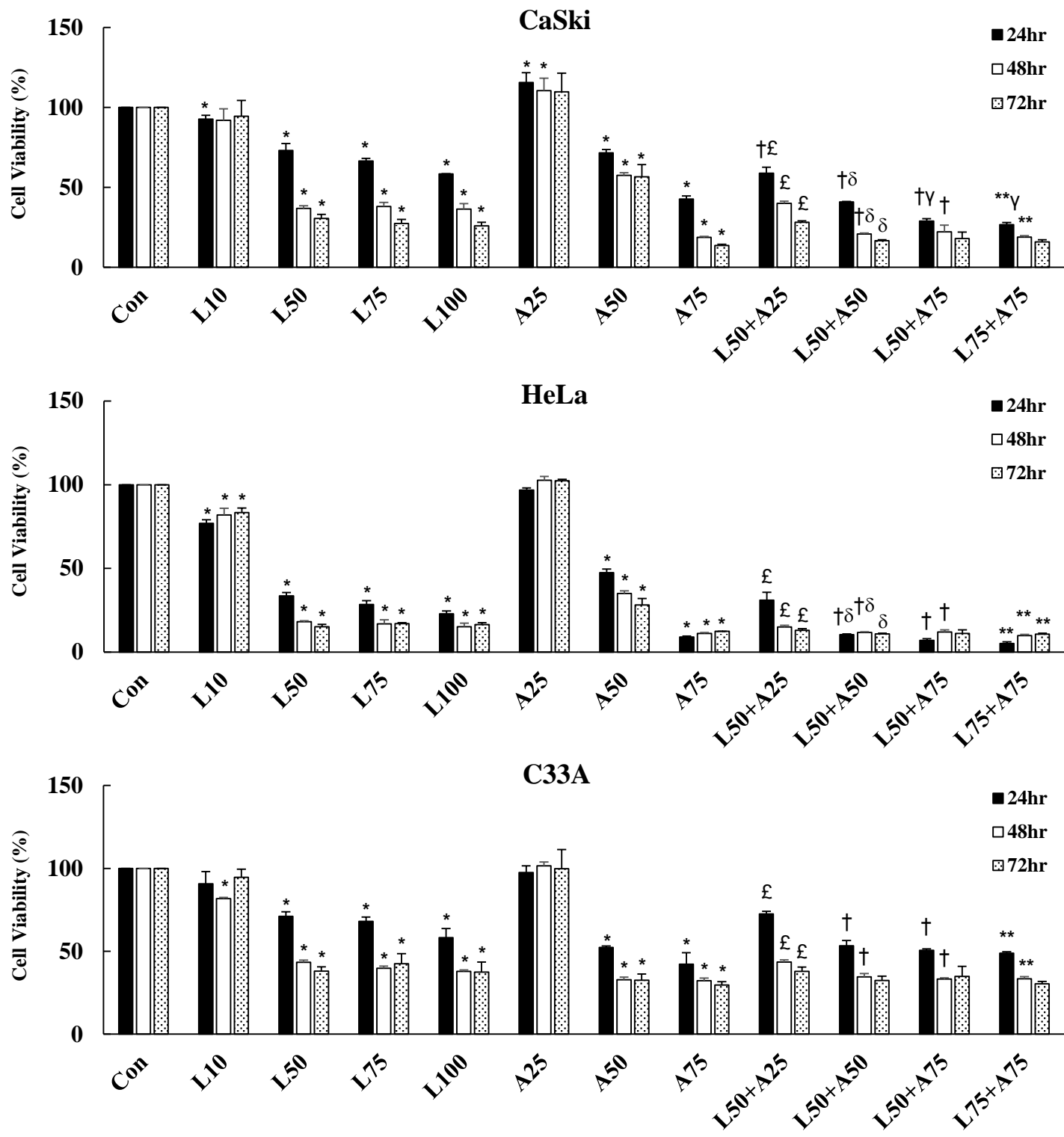


Figure S2A

CaSki

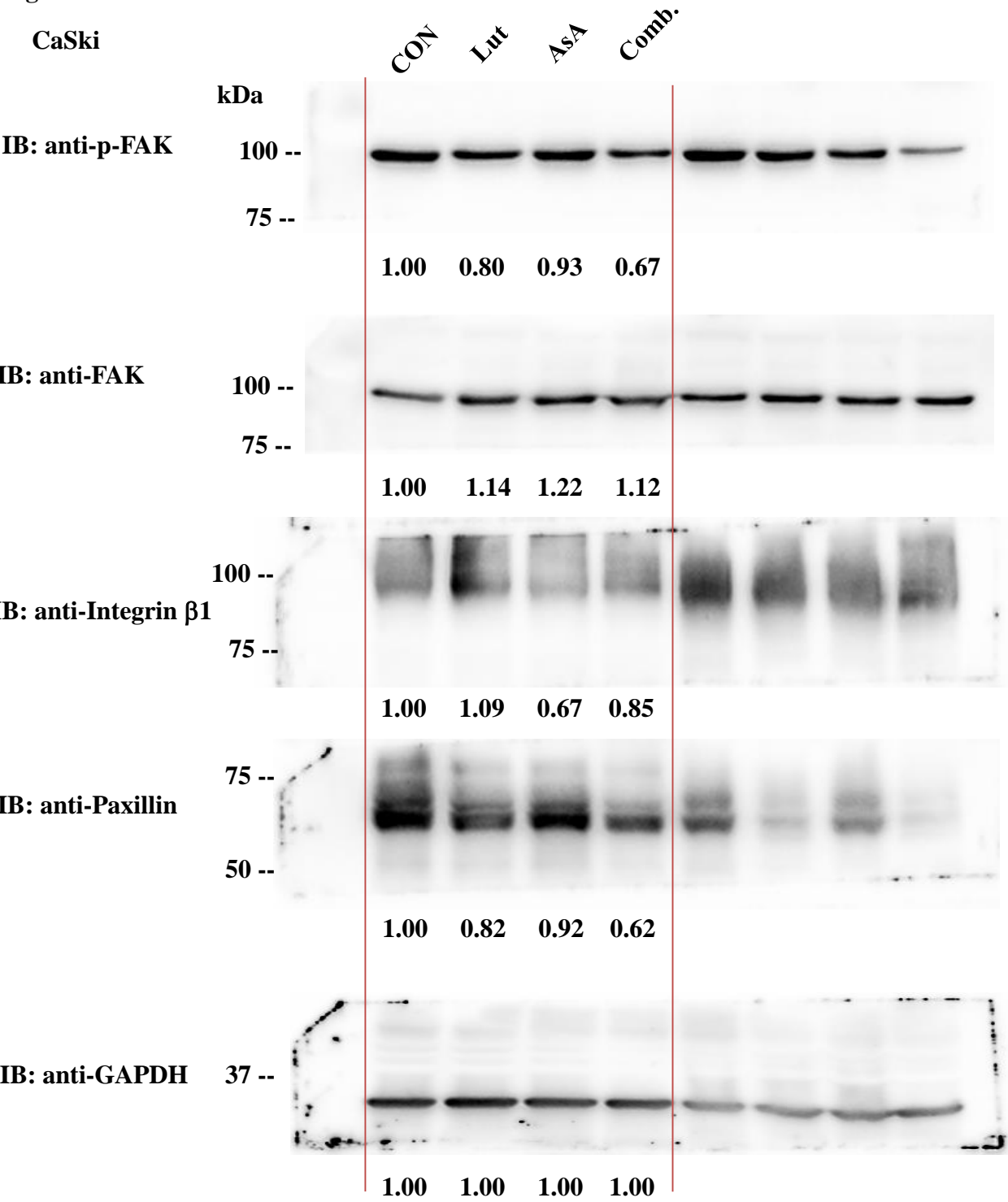


Figure S2B

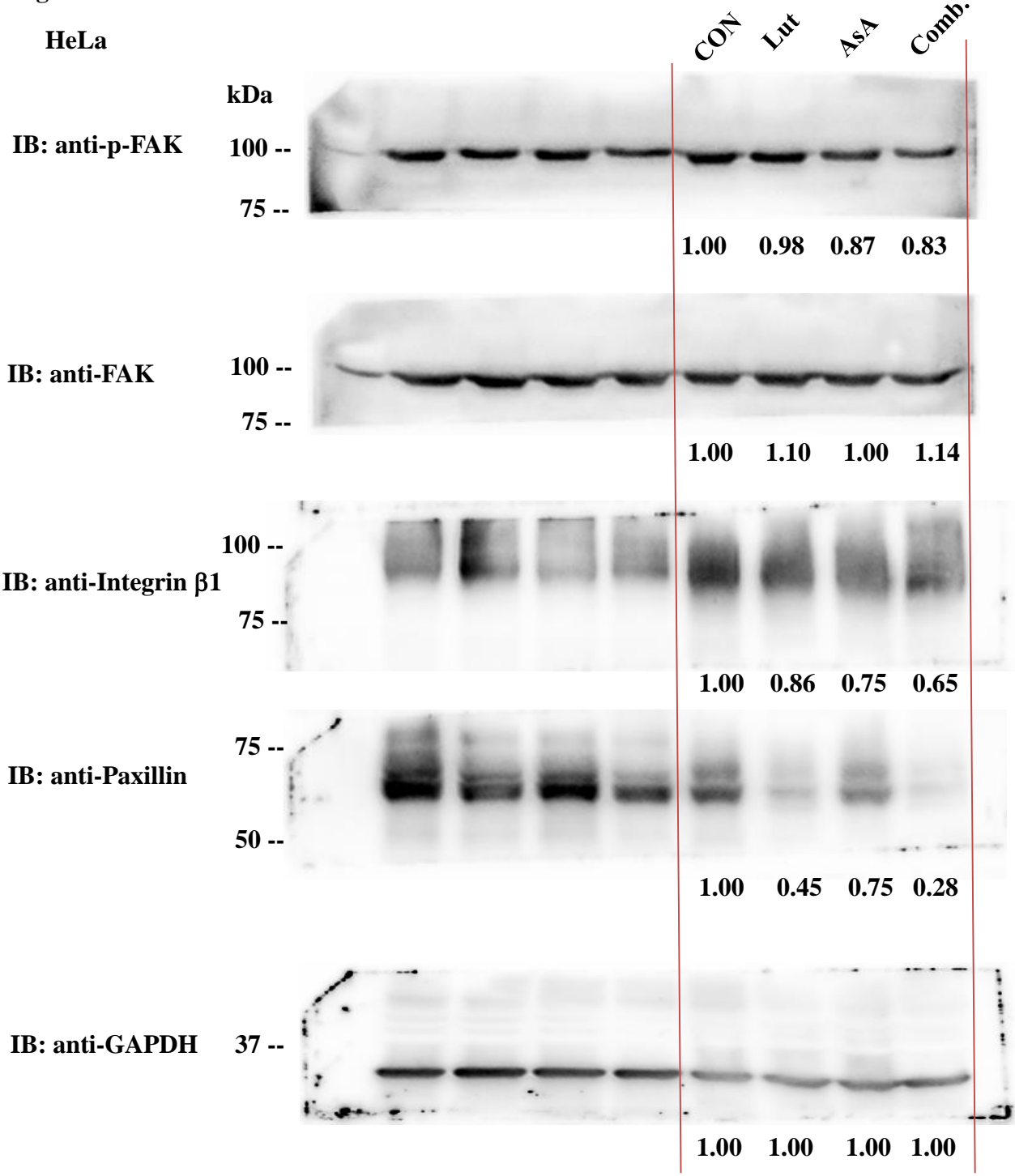


Figure S3A

CaSki

kDa

CON Lut AsA Comb.

IB: anti-PARP-1

100 --

75 --

1.00 1.52 1.10 2.00

IB: anti-Bcl-2

25 --

1.00 0.86 0.93 0.63

IB: anti-Bax

20 --

15 --

1.00 1.38 1.91 2.31

IB: anti-cleaved  
caspase-3

20 --

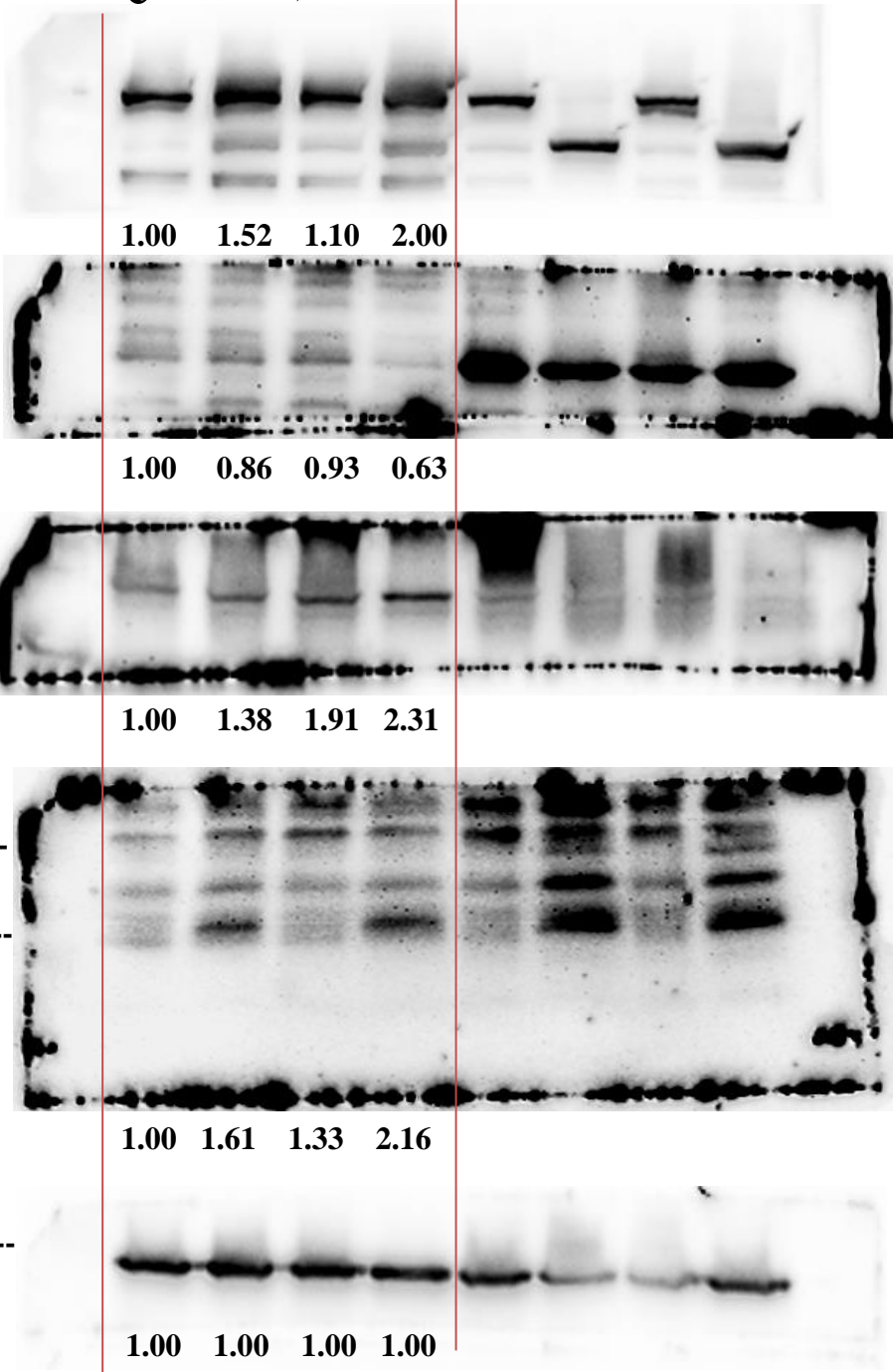
15 --

1.00 1.61 1.33 2.16

IB: anti-GAPDH

37 --

1.00 1.00 1.00 1.00



**Figure S3B**

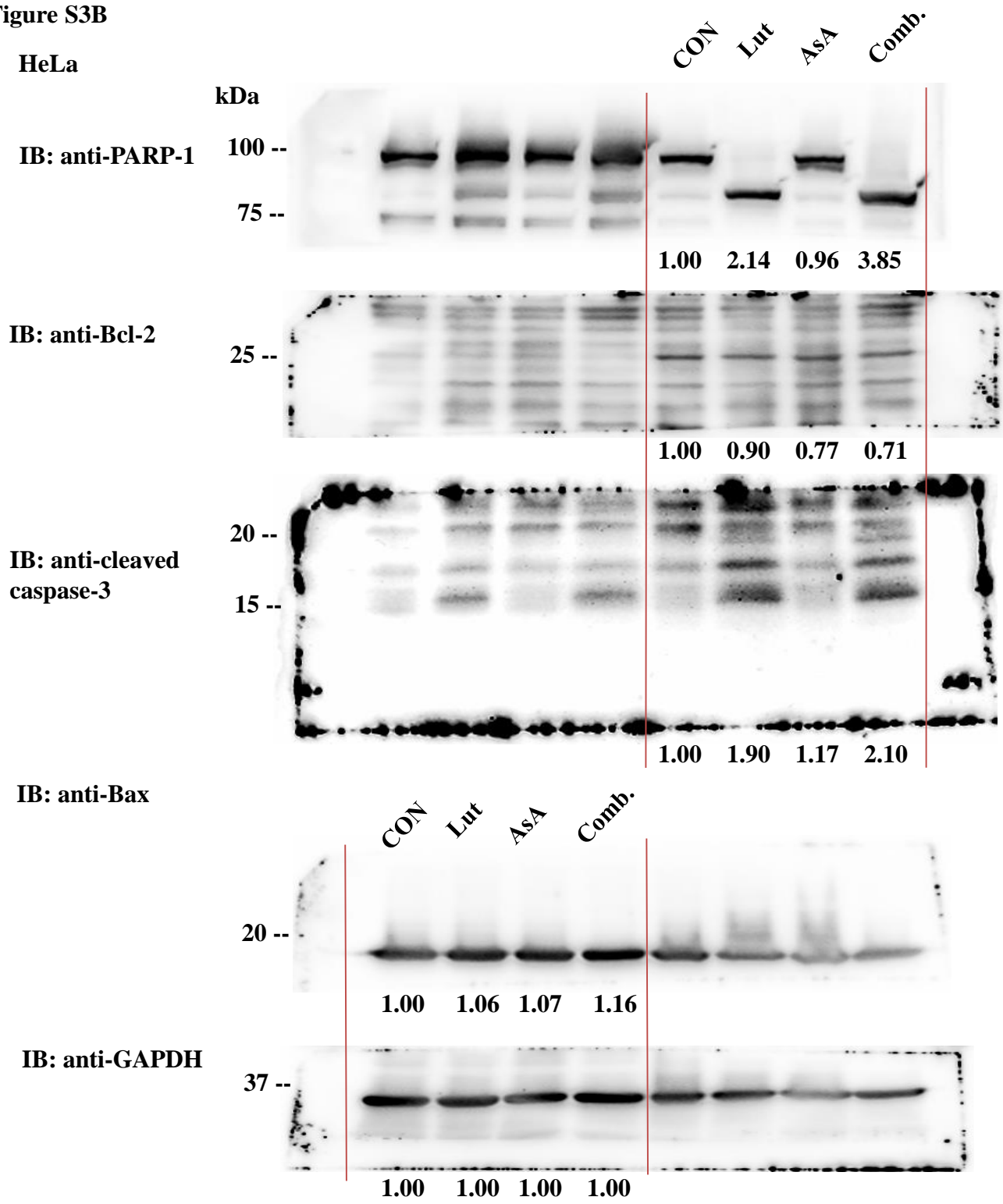


Figure S4A

CaSki

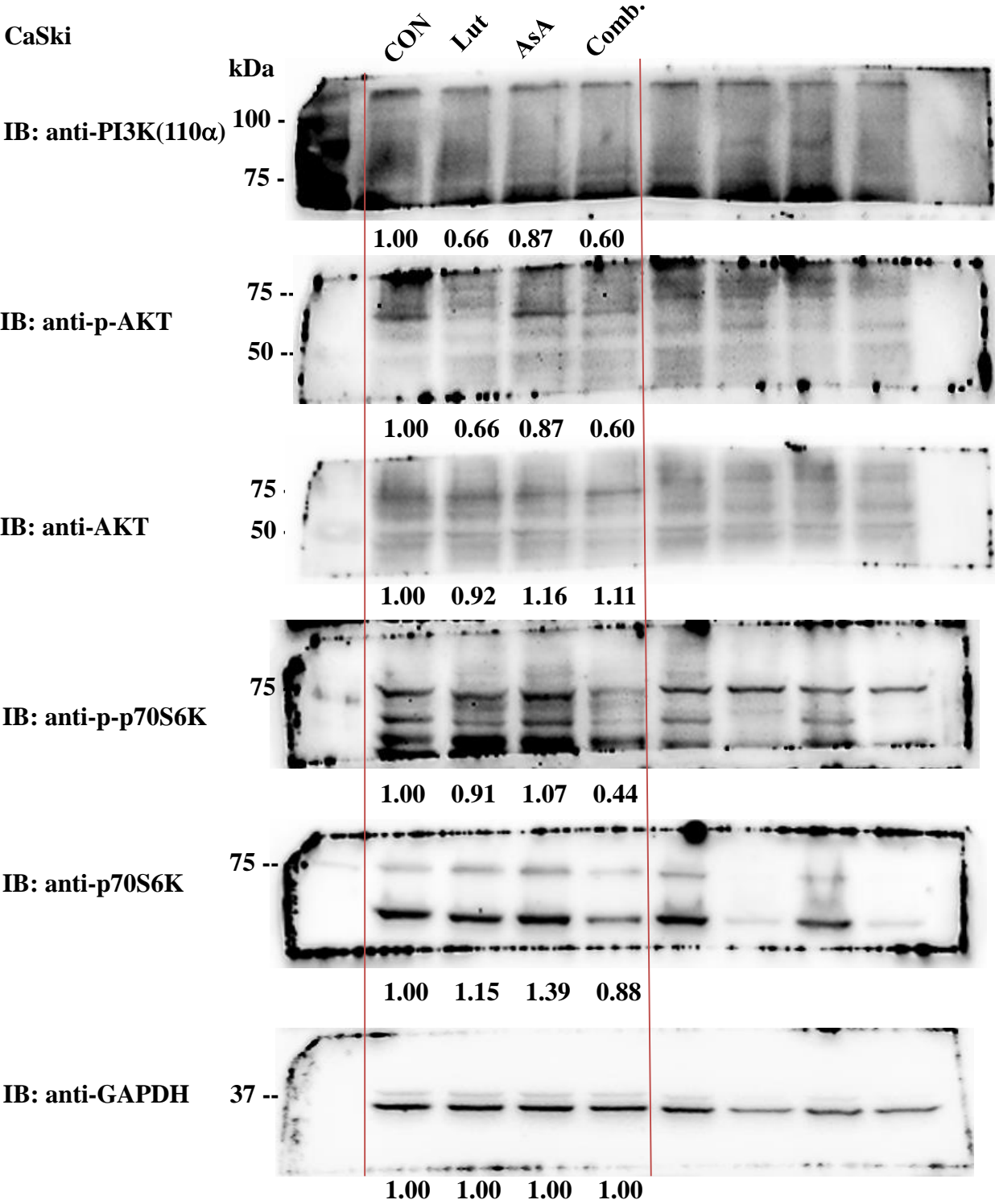


Figure S4B

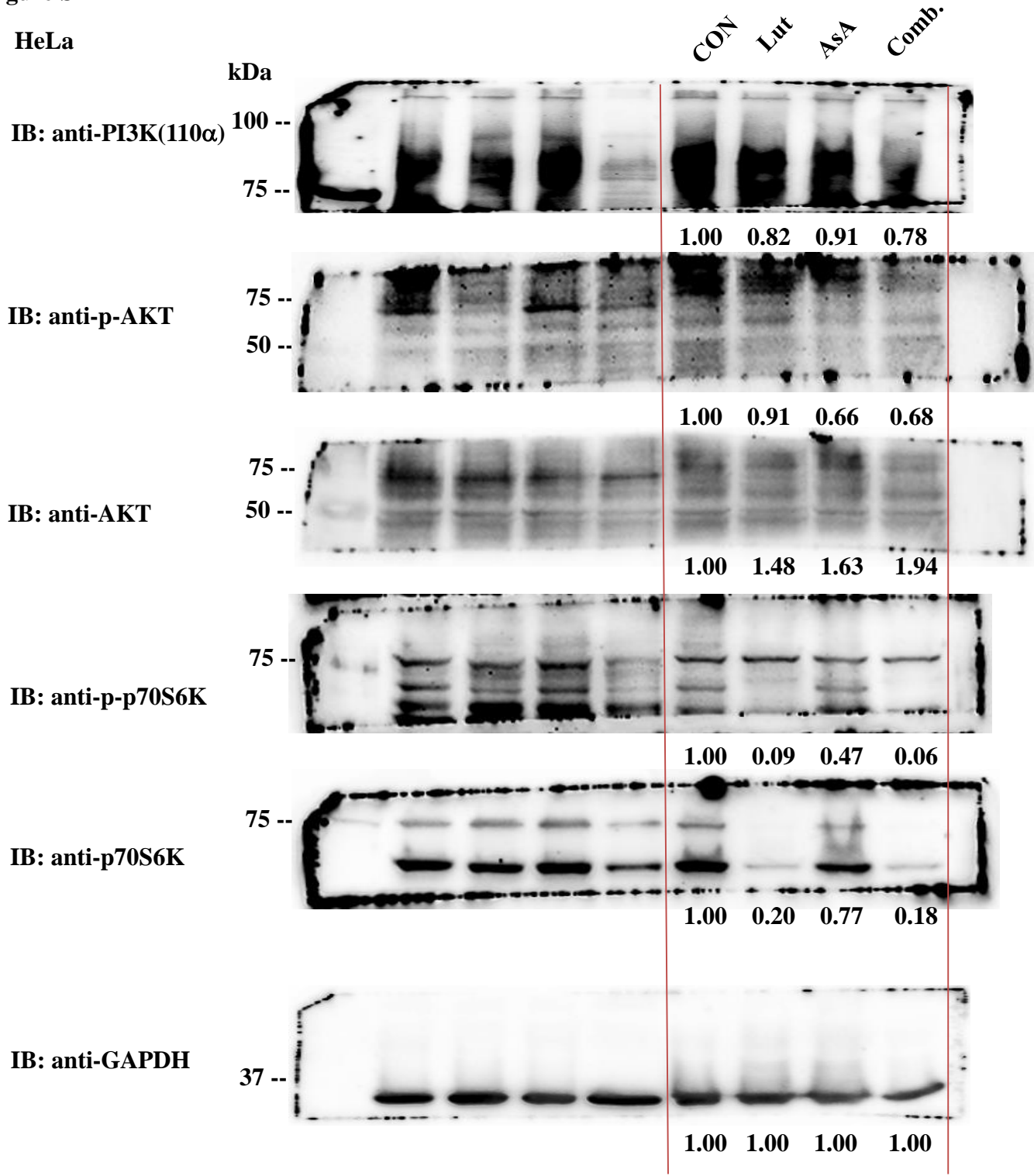
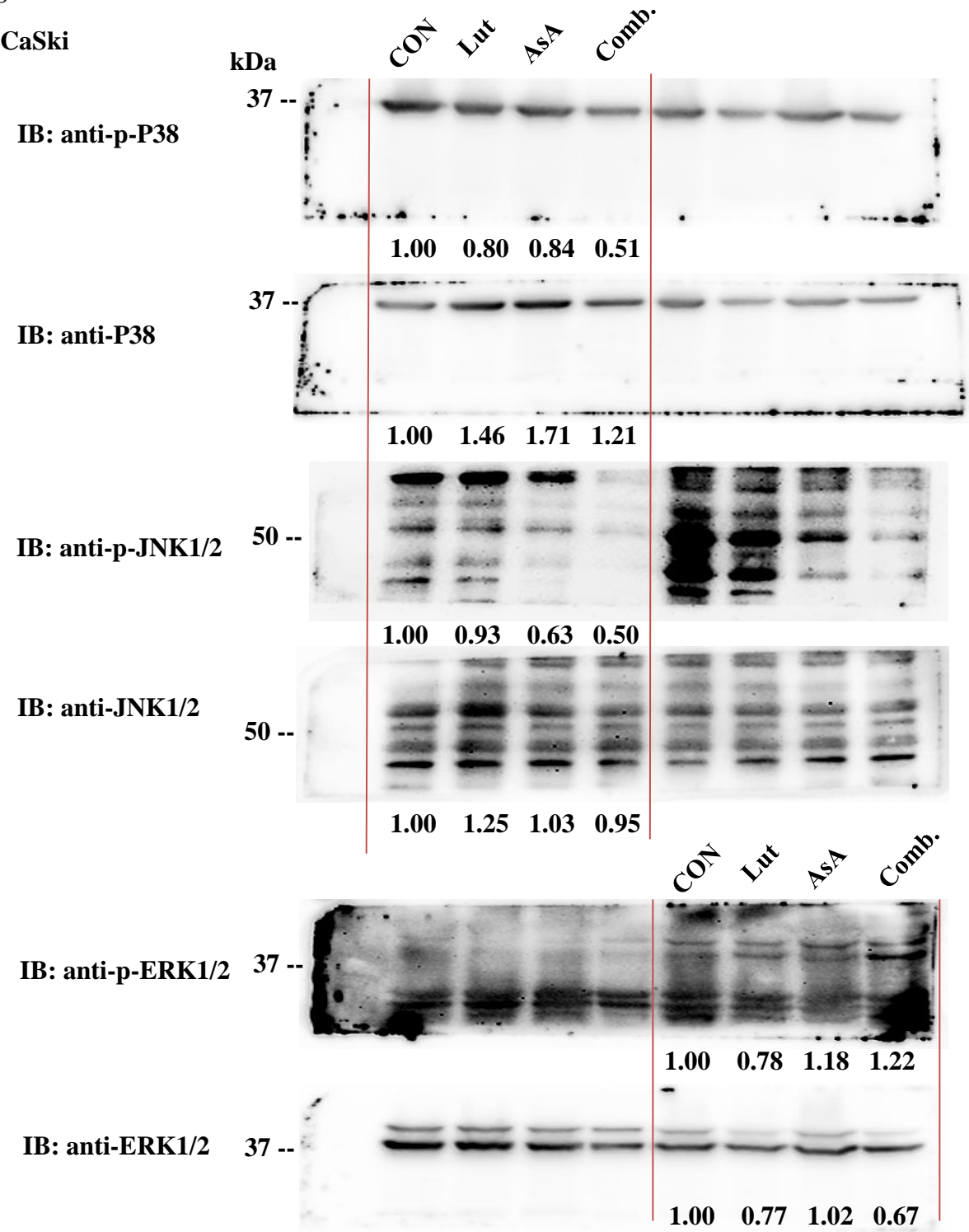


Figure S5A

CaSki



**Figure S5B**

**HeLa**

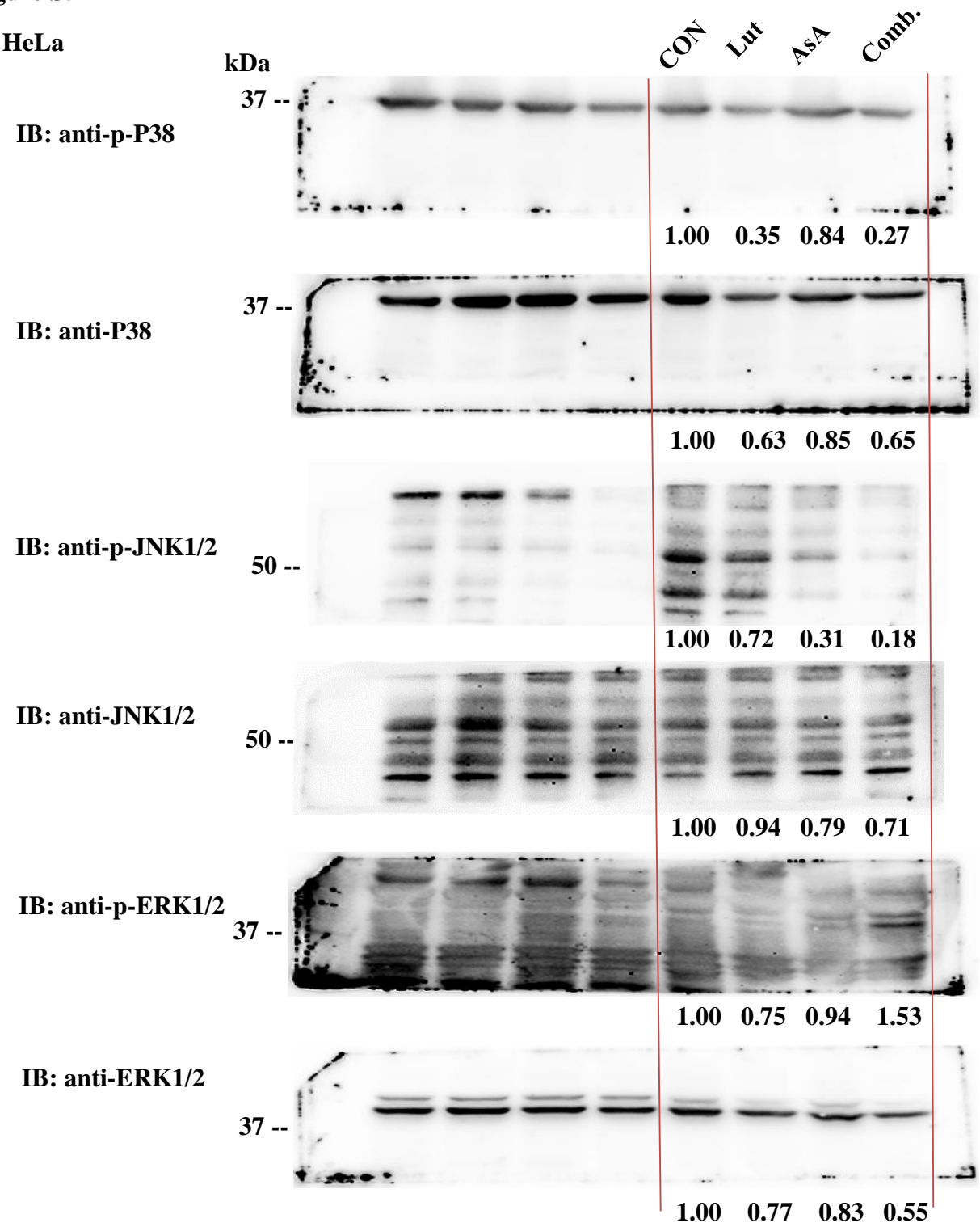


Figure S6A

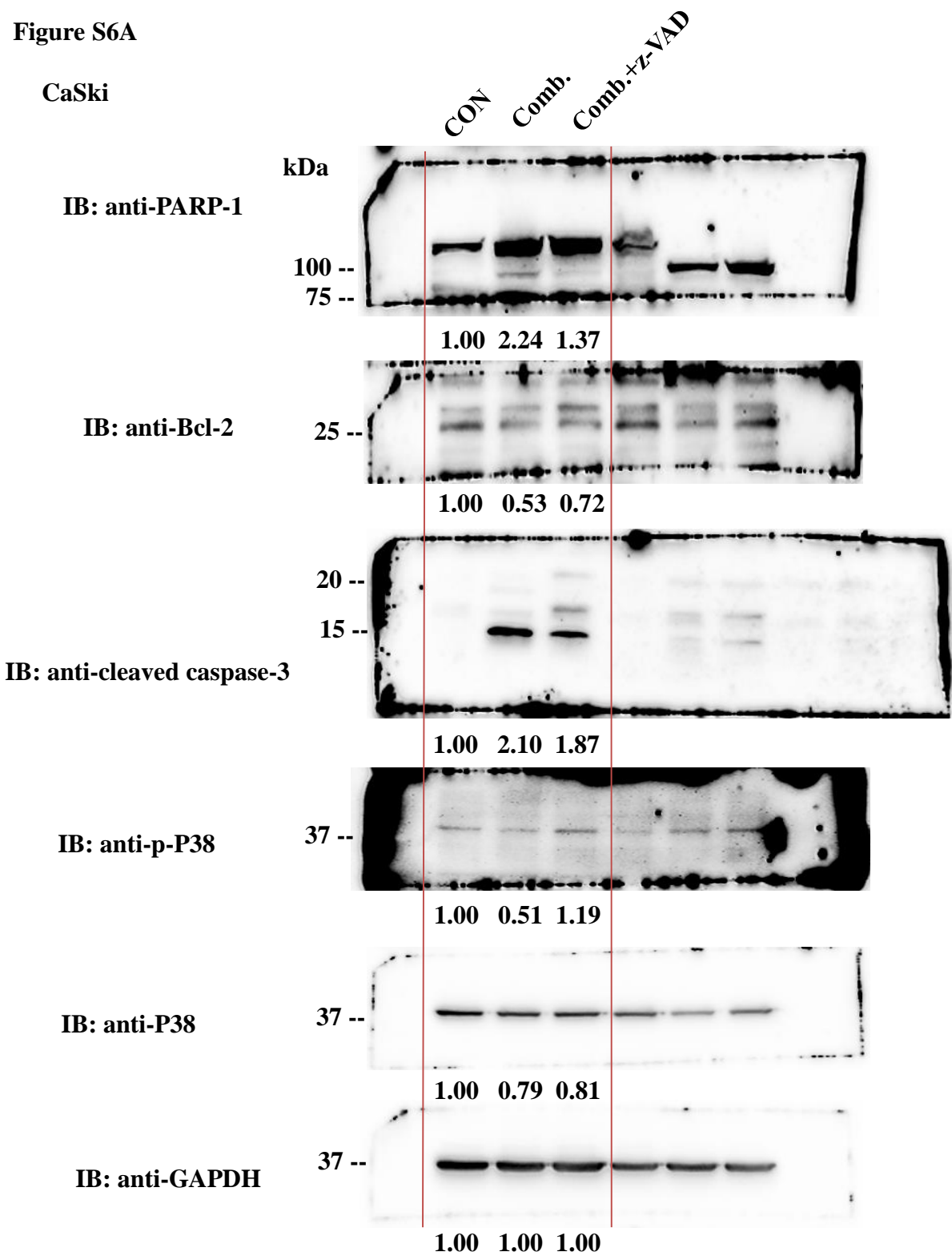


Figure S6B

