

Article

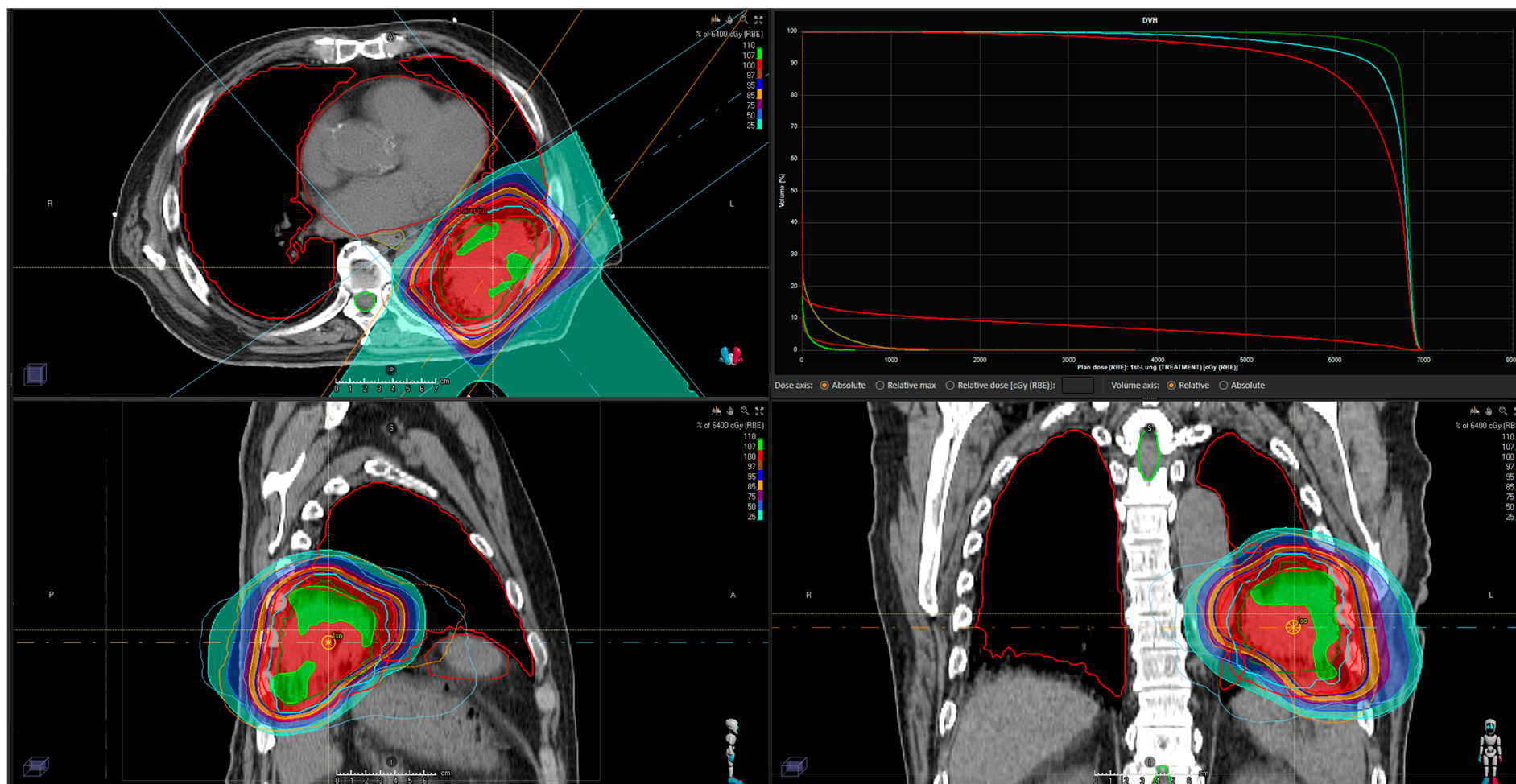
# Prospective study of proton therapy for lung cancer patients with poor lung function or pulmonary fibrosis

Jae Myoung Noh, Hongseok Yoo, Woojin Lee, Hye Yun Park, Sun Hye Shin, and Hongryull Pyo

**Table S1.** Characteristics of proton beam therapy.

Technique	Calculation algorithm	Optimization		Total
		SFO	MFO	
Continuous line scanning	Monte Carlo algorithm	31	5	36
	Pencil beam algorithm	5	0	5
Passive scattering	Pencil beam algorithm	13	0	13
Total		49	5	54

SFO, single-field optimization; MFO, multi-field optimization.



**Figure S1.** Example of proton beam therapy plan for a patient with T3N0M0 squamous cell carcinoma in the left lower lobe and idiopathic pulmonary fibrosis treated with proton beam therapy to 64 GyE in 8 fractions. Contours including the internal target volume (dark green), clinical target volume (blue), planning target volume (red), spinal cord (green), esophagus (dark yellow), heart (red purple), and both lung (red). Because the tumor was located close to the stomach, target coverage was adjusted to lower dose to the stomach.