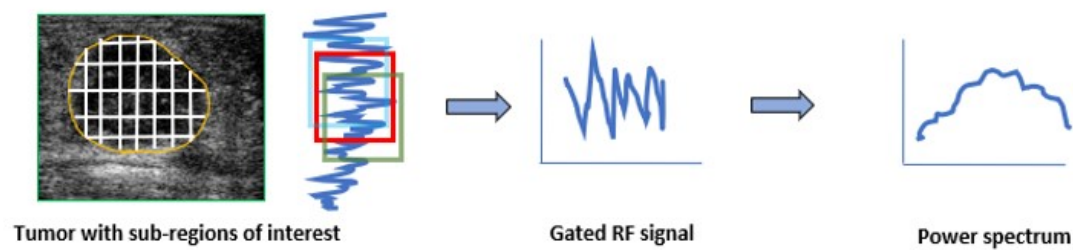


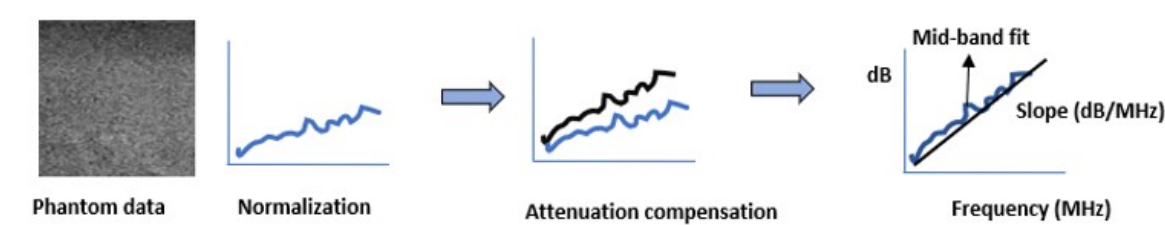
Table S1. The survival outcomes (recurrence-free survival) as predicted by the classifiers after the development of the model. Abbreviations: k-NN: k Nearest Neighbors; SVM: Support Vector Machine with radial basis function kernel.

Classifiers	Predicted Group	5-year predicted RFS (95% confidence interval)	<i>p</i> -value
k-NN	Recurrence	56% (44–69%)	0.001
	Non-Recurrence	93% (84–99%)	
SVM	Recurrence	53% (38–68%)	0.003
	Non-Recurrence	87% (76–97%)	

a. Extraction of power spectrum



b. Data normalization and extraction of spectral data



c. Parametric maps and texture analysis

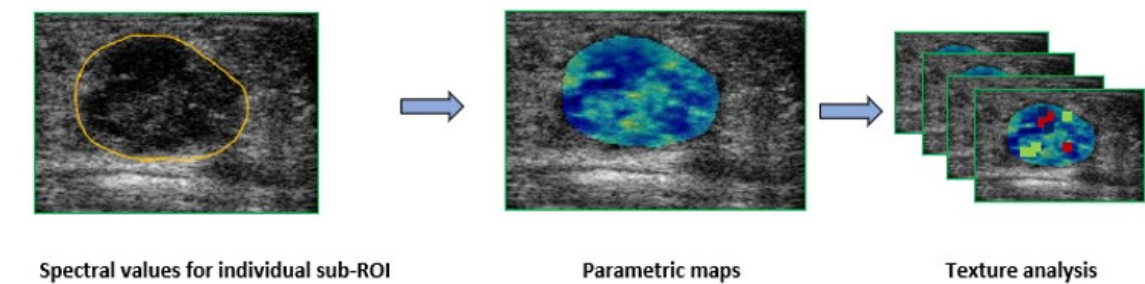


Figure S1. Study methodology summarizing feature processing.