

Supplementary Materials: Antitumor Activity of Simvastatin in Preclinical Models of Mantle Cell Lymphoma

Juliana Carvalho Santos, Núria Profitós-Pelejà, Marcelo Lima Ribeiro and Gaël Roué

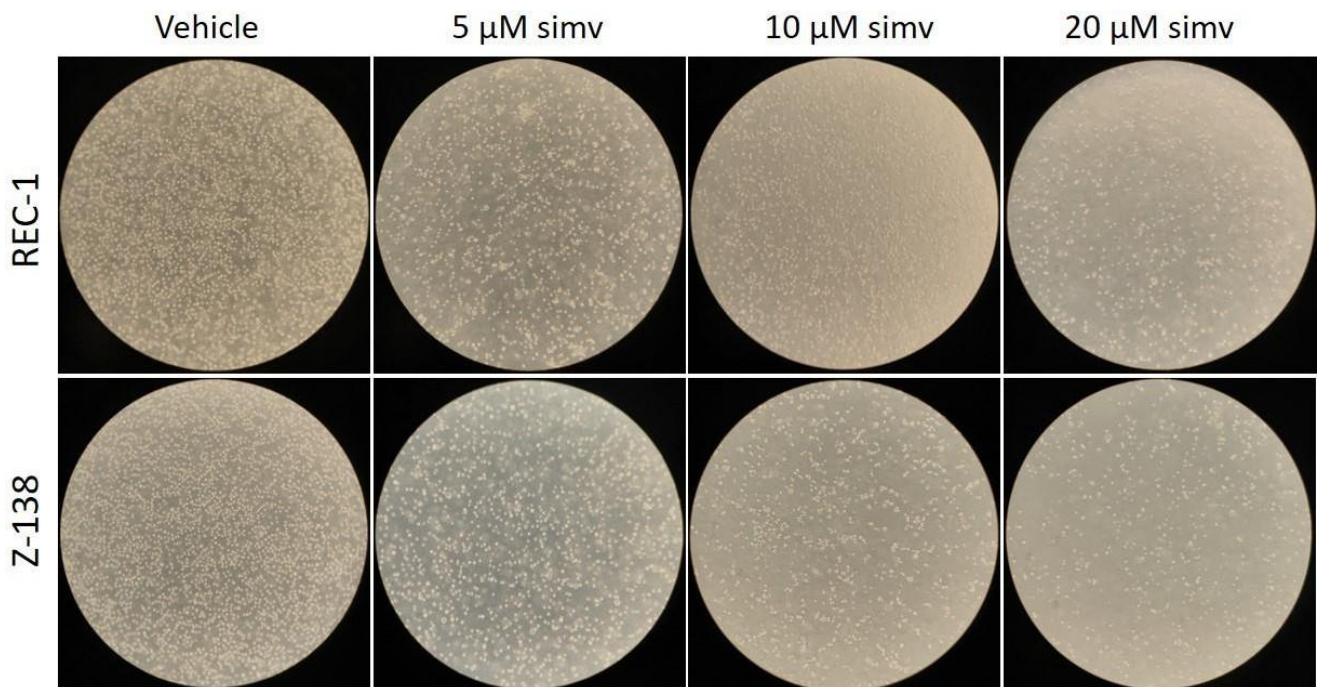


Figure S1. Representative bright field pictures of REC-1 and Z-138 cultures exposed for 3 days to increasing doses of simvastatin.

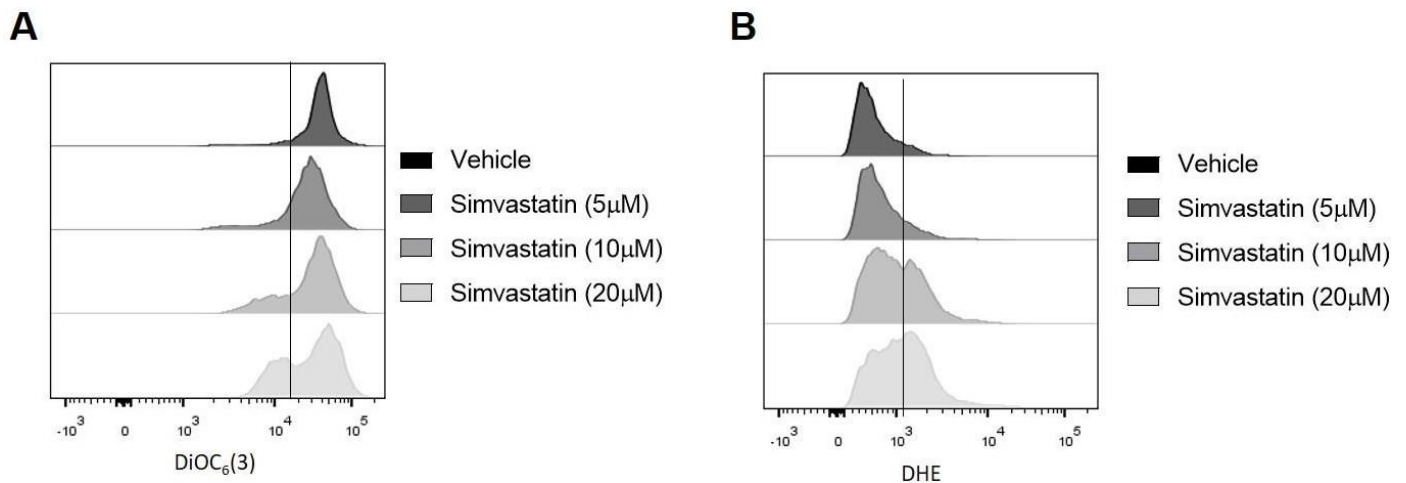


Figure S2. Representative FACS images of REC-1 and Z-138 cell lines treated with simvastatin or vehicle for 48 h analyzed by DiOC₆ (A) and dihydroethidium (B) staining.

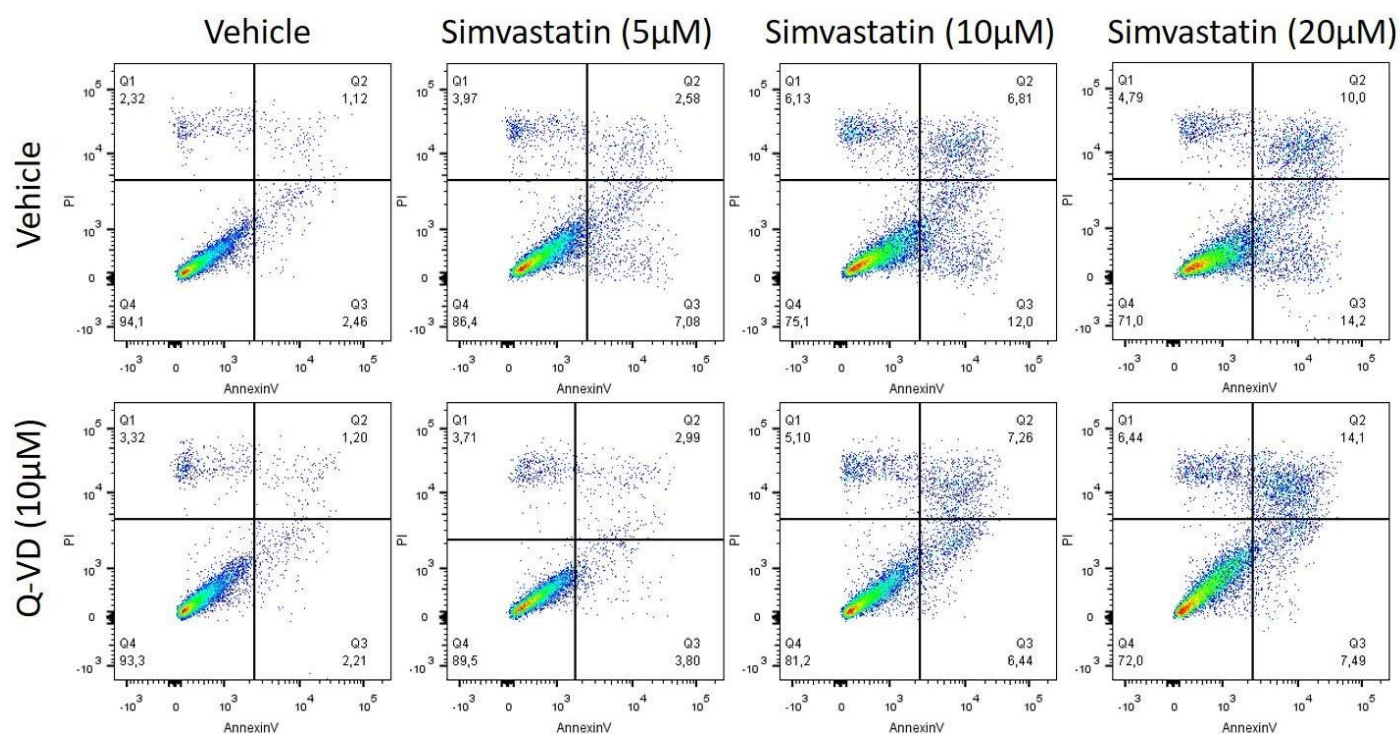


Figure S3. Representative FACS images of REC-1 and Z-138 cell lines treated with simvastatin or vehicle for 48 h analyzed by Annexin V-FITC/propidium iodide staining.

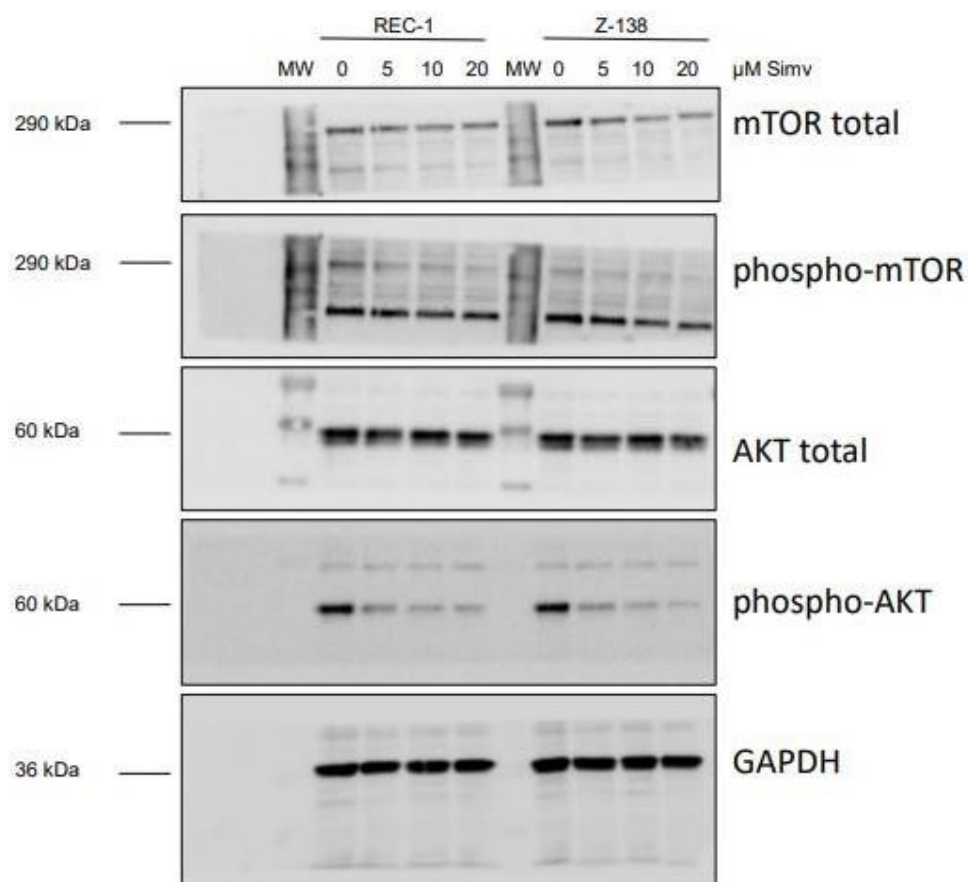


Figure S4. Full Western blot images.