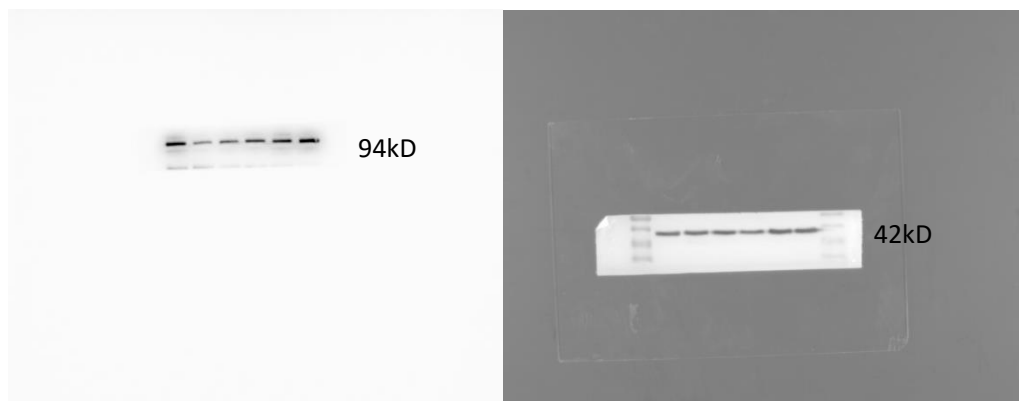


Dear editor,

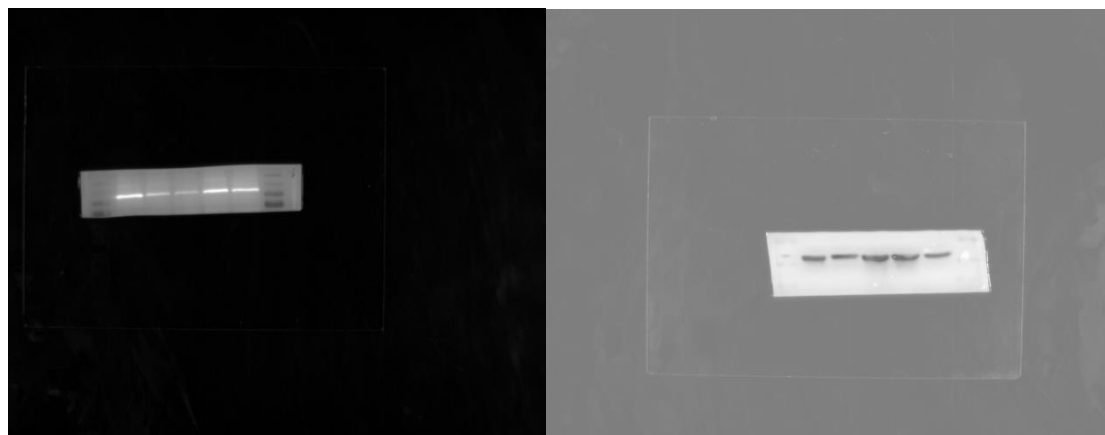
Thank you for your careful check. I'll present the information you asked in the attachment as follows.

1. For Western blot figures, experiments were conducted 3 times at least, I put the raw pictures of Figure 2(d), 2h and supplementary figure 1d in below. The relative grayscale value of each band relative to actin obtained by using Image J was also showed. The relative protein expression of LRRC8A in PAAD cell lines in Figure 2(d) was based on their relative grayscale value.

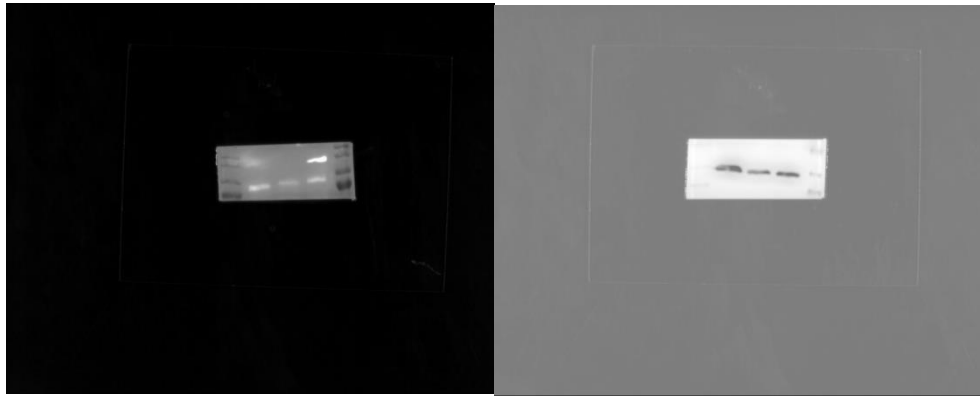
- a. Protein expression of LRRC8A in HPCY5, ASPC-1, PANC1, BXPC-3, ASPC-1^{GEM-R}, ASPC-1^{GEM-R} cells (Left) and protein expression of ACTIN in HPCY5, ASPC-1, PANC1, BXPC-3, ASPC-1^{GEM-R}, ASPC-1^{GEM-R} cells (Right).



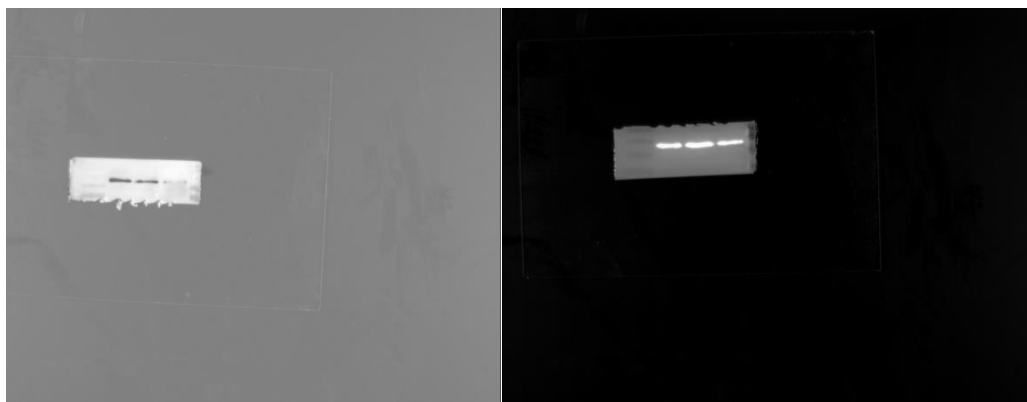
- b. Protein expression of LRRC8A in HPCY5, , ASPC-1, PANC1, BXPC-3, ASPC-1^{GEM-R} cells (Left) and protein expression of ACTIN in HPCY5, ASPC-1, PANC1, BXPC-3, ASPC-1^{GEM-R} cells (Right).



- c. Protein expression of LRRC8A in ASPC-1 and ASPC-1^{GEM-R} cells (Left) and protein expression of ACTIN in ASPC-1 and ASPC-1^{GEM-R} cells (Right).



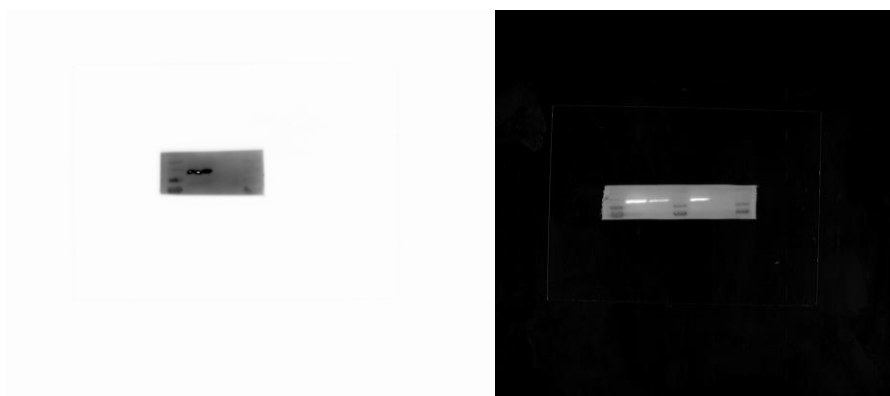
- d. Protein expression of LRRC8A in BXPC-3, ASPC-1 and PANC1 cells and (Left) and protein expression of ACTIN in BXPC-3, ASPC-1 and PANC1 cells.



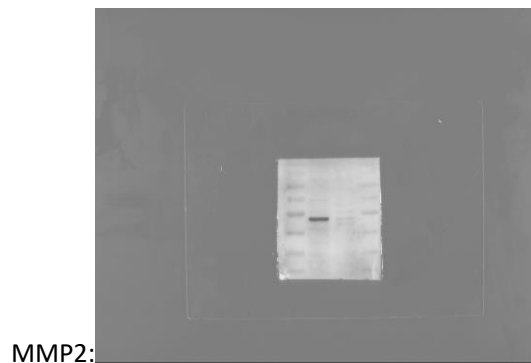
The relative grayscale value of each band (ASPC-1, PANC1, BXPC-3, ASPC-1^{GEM-R}) relative to actin is listed in below.

ASPC1	PANC1	BXPC3	ASPC1 ^{GEM-R}
0.57652	0.46321	0.97696	0.887790
1.37580	1.02821	2.74920	2.028100

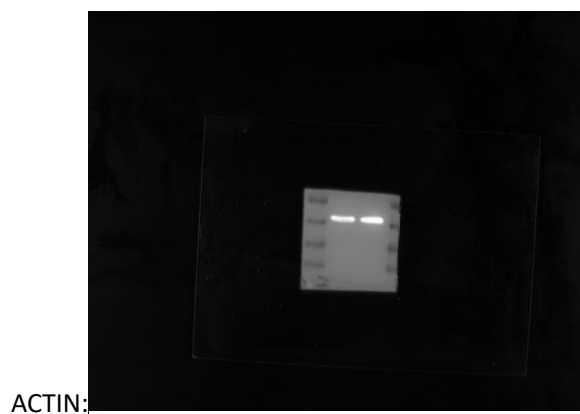
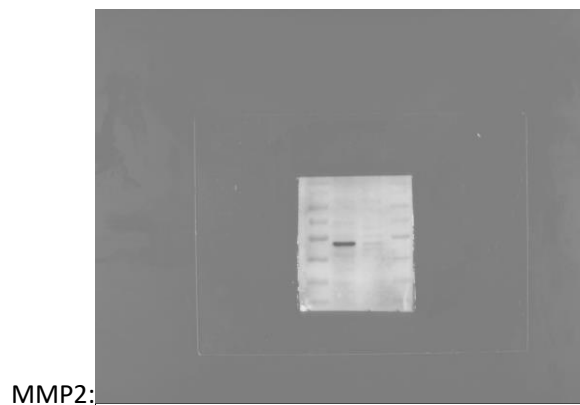
- e. Typical protein expression of LRRC8A in ASPC-1^{GEM-R} cells and ASPC-1^{GEM-R} cells infected with shLRRC8A (left), ASPC-1 cells, ASPC-1 cells infected with shLRRC8A, BXPC-3, BXPC-3 cells infected with shLRRC8A (right) in Figure 2h..



- f. Typical protein expression of MMP2 in ASPC-1^{GEM-R} cells and ASPC-1^{GEM-R} cells infected with shLRRC8A in Figure 2h.

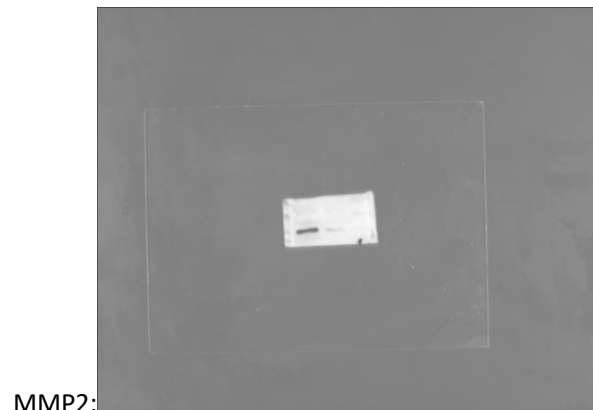


- g. Typical protein expression of MMP2 in ASPC-1 cells and ASPC-1 cells infected with shLRRC8A in Figure 2h.

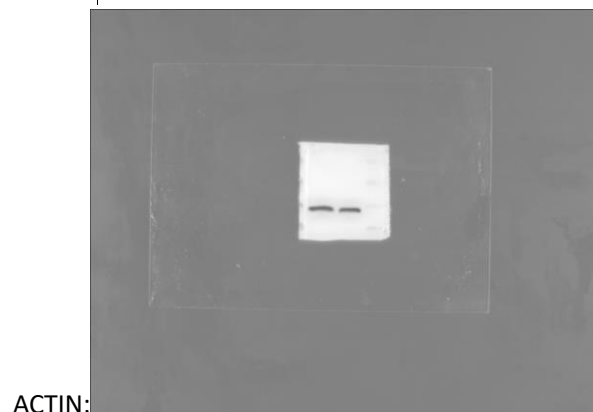


- h. Typical protein expression of MMP2 in BXP-3 and BXP-3 cells infected with

shLRRC8A in Figure 2h.

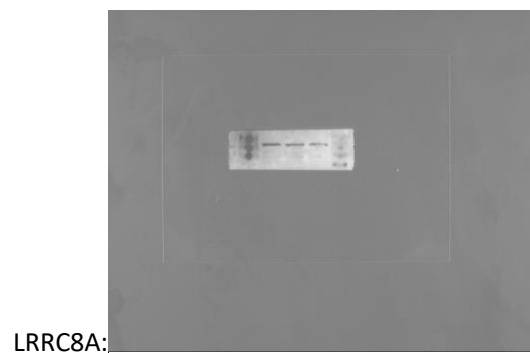


MMP2:

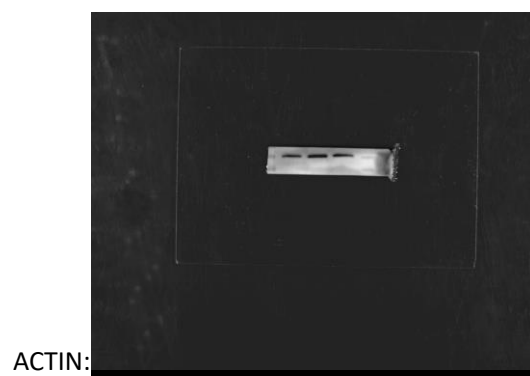


ACTIN:

- i. Typical protein expression of MMP2 in ASPC-1^{GEM-R} cells and ASPC-1^{GEM-R} cells treated with GEM or DCPIB+GEM in supplementary figure 1d.



LRRC8A:



ACTIN: