

Figure S1. A-B) Colony formation assays of ECC1 (A) and Ishikawa cells (B) transfected with pcDNA3.1-STING construct.

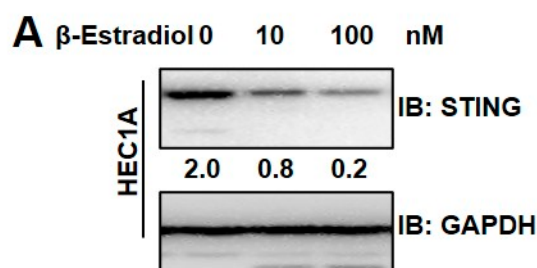


Figure S2. A) IB analysis of WCL derived from HEC1A cells.

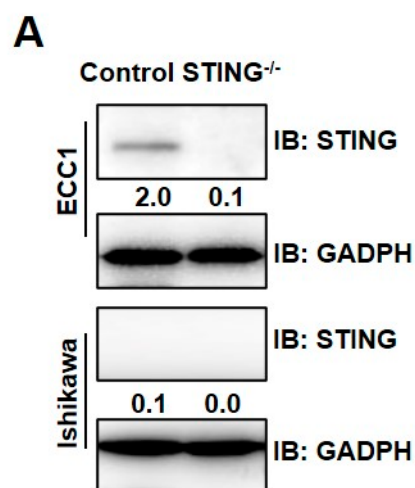


Figure S3. (A) IB analysis of WCL derived from ECC1 and Ishikawa STING^{-/-} cells.

Table S1. qPCR primers.

Primer name	sequences
Sting F	5'-CCAGAGCACACTCTCCGGTA-3'
Sting R	5'-CGCATTGGGAGGGAGTAGTA-3'
cGAS F	5'-CACGAAGCCAAGACCTCCG-3'
cGAS R	5'-GTCGCACTTCAGTCTGAGCA-3'
IFN β F	5'-ATGACCAACAAGTGTCTCCTCC-3'
IFN β R	5'-GGAATCCAAGCAAGTTGTAGCTC-3'

cd5 F	5'-CCAAGCAGTCGTCTTTGTCAC-3'
cd5 R	5'-CTCTGGGTTGGCACACACTT-3'
CXCL10 F	5'-GTGGCATTCAAGGAGTACCTC-3'
CXCL10 R	5'-TGATGGCCTTCGATTCTGGATT-3'
HDAC1 F	5'-CTACTACGACGGGGATGTTGG-3'
HDAC1 R	5'-GAGTCATGCGGATTCGGTGAG-3'
HDAC3 F	5'-CCTGGCATTGACCCATAGCC-3'
HDAC3 R	5'-CTCTTGGTGAAGCCTTGCATA-3'
HDAC2 F	5'-ATGGCGTACAGTCAAGGAGG-3'
HDAC2 R	5'-TGCGGATTCTATGAGGCTTCA-3'
HDAC8 F	5'-TCGCTGGTCCCGGTTTATATC-3'
HDAC8 R	5'-TACTGGCCCCGTTTGGGGAT-3'
GADPH F	5'-GGAGCGAGATCCCTCCAAAAT-3'
GADPH R	5'-GGCTGTTGTCATACTTCTCATGG-3'
