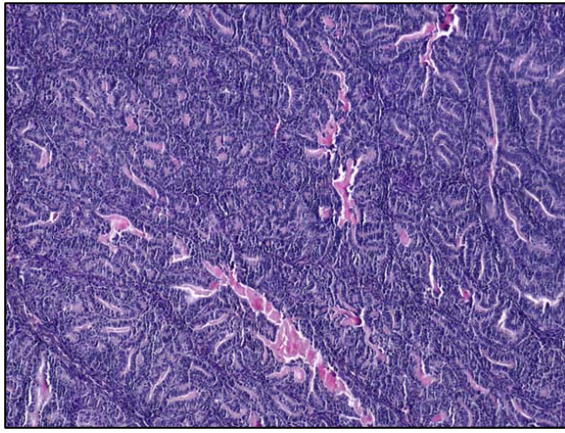
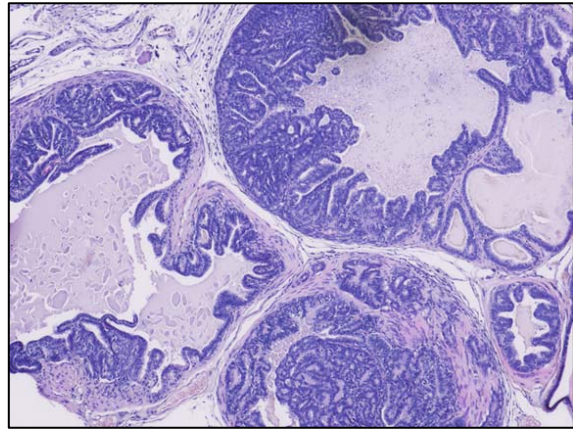


Supplementary Figure S1. Stage-specific effect of IP6 feeding on the LUT weight of TRAMP mice. Quantified data are represented as columns (mean for each group); bars represent mean \pm SEM. *IP6*, inositol hexaphosphate. LUT, lower urinogenital tract (prostate, bladder, and seminal vesicles).



Control



2% IP6

Supplementary Figure S2. Representative pictographs (x100 magnification) of H&E stained dorsolateral prostate tissue from TRAMP control (left) and IP6-fed TRAMP mice (right) in the 30-45 week group. *IP6*, inositol hexaphosphate.