

Figure S1: Compound treatment of patient tumor avatars. Scalebar = 500 microns.

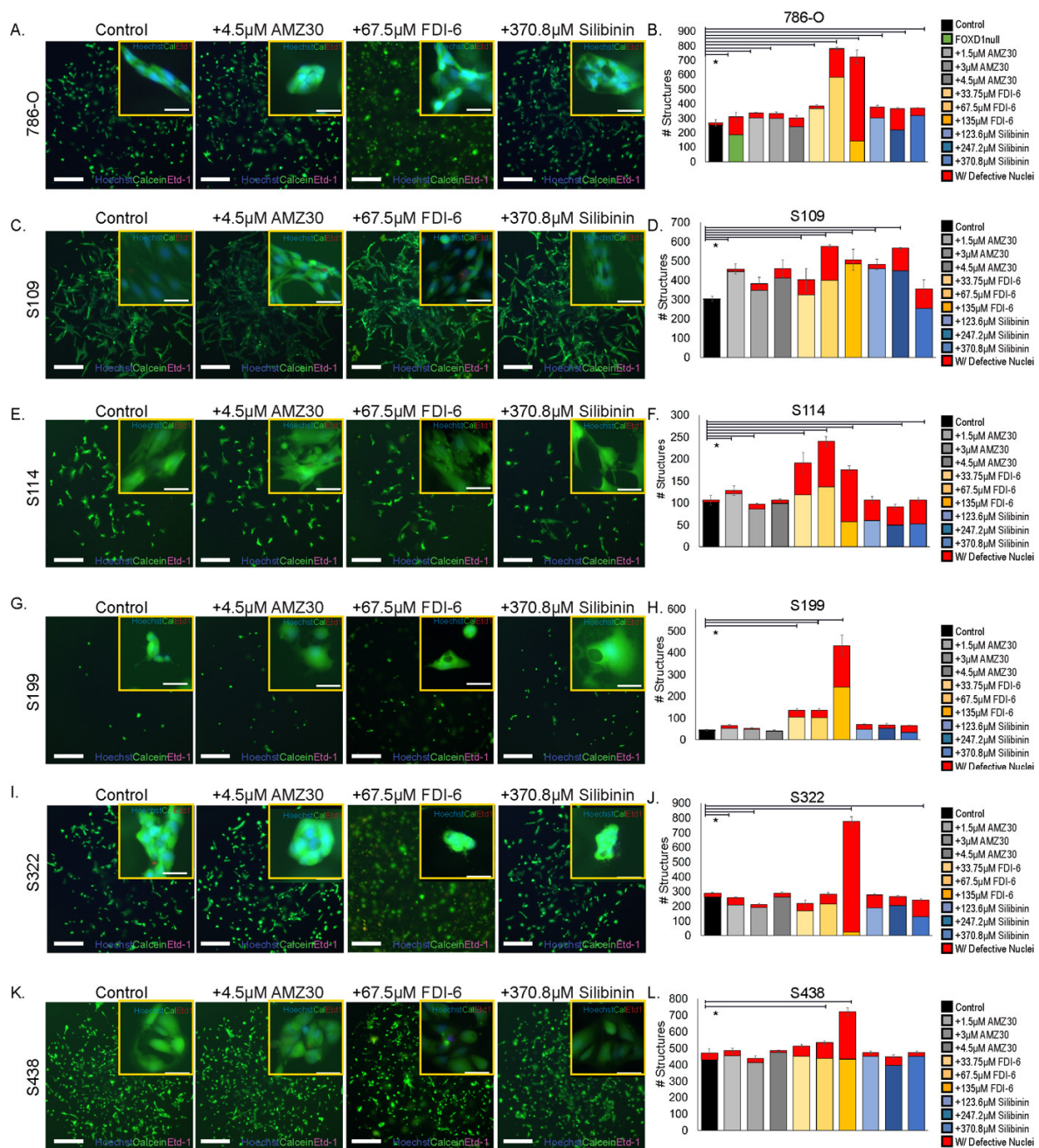


Figure S2: Compound treatment of primary 3D cultures structure analysis. (A-L) Treatments of primary 3D tumor cultures with compounds (AMZ30, Silibinin, FDI-6) were titrated and analyzed for number of structures formed. Scalebar = 500µm. Inlay images are representative structures. Scalebar = 20µm.

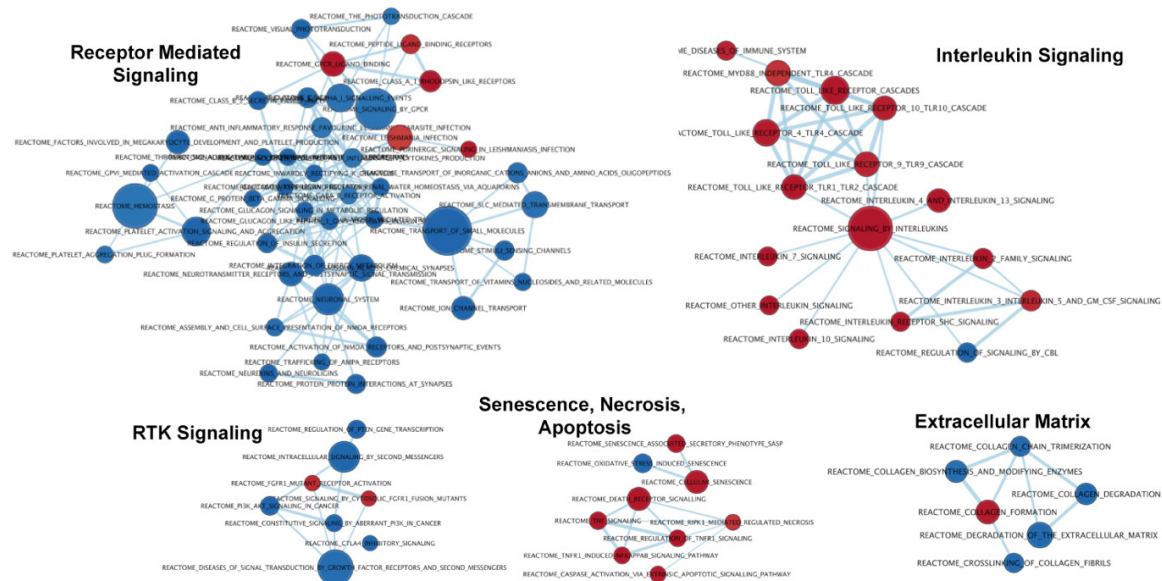


Figure S3: GSEA Pathway analysis identifies actionable pathways. Red nodes indicate REACTOME pathways upregulated in 786-O^{FOXDI} while blue nodes indicate pathways downregulated in 786-O^{FOXDI}.

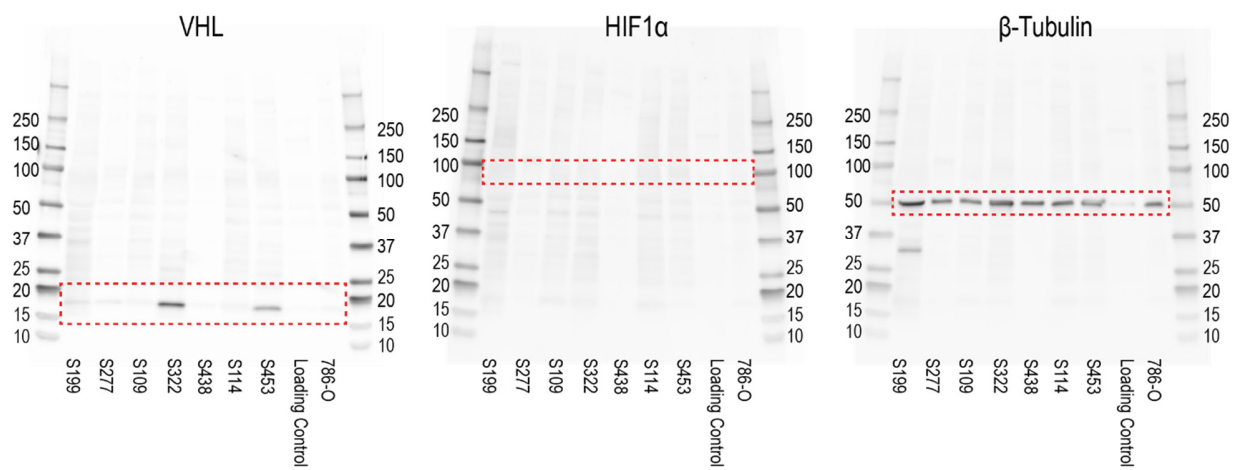


Figure S4: Uncropped Western Blot Figures. Unedited blots used in Figure 8A. Dotted-red line indicates region analyzed for protein abundance against designated target. Contrast enhanced in main figure for presentation.