

Supplementary Materials

Table S1. Patients' clinical data.

Figure S1. Plot showing spectral count measurements comparing results from a secretome processed using the standard proteomic workflow with a protocol using a pretreatment with Proteinase K.

Figure S2. Cell proliferation of BT549 cells resistant to paclitaxel.

Figure S3. SOD2-I58T mutant is not recognized by ELISA. SOD2 levels were measured in two secretomes, from BT549-WT and BT549-shSOD2-I58T cells, by immunoblot (left panel) and by ELISA (right panel).

Figure S4. Uncropped blots

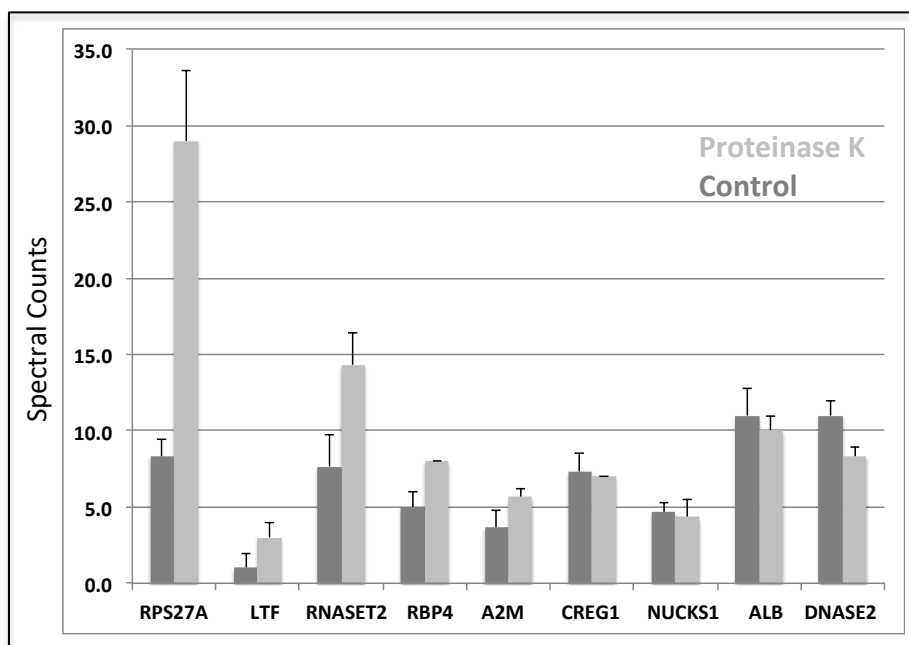
Table S1

ID	Breast Cancer Subtype	Histologic grade	Ki67 (%)	cTNM	Neoadjuvant chemotherapy	Clinical response	Radiologic response ^a	Data IQ	ypTNM	Relapse
Neo_1	Luminal B HER2 -	2	30	T3N3M0	Paclitaxel > Antracyclines	CR	PR	4/11/2016	ypT1aN1mic	Yes
Neo_2	Luminal B HER2 - --> TN	2	45	T2N0M0	Paclitaxel > Antracyclines	PR	SD	4/21/2016	ypT2N0	No
Neo_3	Luminal B HER2 -	3	70	T2N0M0	Paclitaxel > Antracyclines	CR	CR	7/31/2018	ypT1bN0	No
Neo_4	TNBC	2	70	T2N1M0	Carboplatin-Paclitaxel > Antracyclines	CR	CR	9/7/2018	ypT0N0- pCR	No
Neo_5	TNBC	3	80	T2N0M0	Carboplatin-Nab-Paclitaxel (only 8C)	CR	CR	10/10/2018	ypT0N0- pCR	No
Neo_6	TNBC	3	95	T2N3M0	Carboplatin-Paclitaxel -> Myocet-Ciclo	CR	PR	8/28/2018	ypT0N0- pCR	Yes
Neo_7	Luminal A	2	15	T3N0M0	Antracyclines > Paclitaxel	CR	PR	11/23/2018	ypT1bN1 mic	No
Neo_8	TNBC	3	55	T2N0M0	Carboplatin-Paclitaxel > Antracyclines	CR	CR	11/7/2018	ypTisN0	No

Notes:

a: Radiologic response assessment to neoadjuvant chemotherapy was done to classify disease outcome as a complete response (CR), partial response (PR), stable disease (SD) or progressive disease (PD) using the RECIST criteria v1.1.

Figure S1

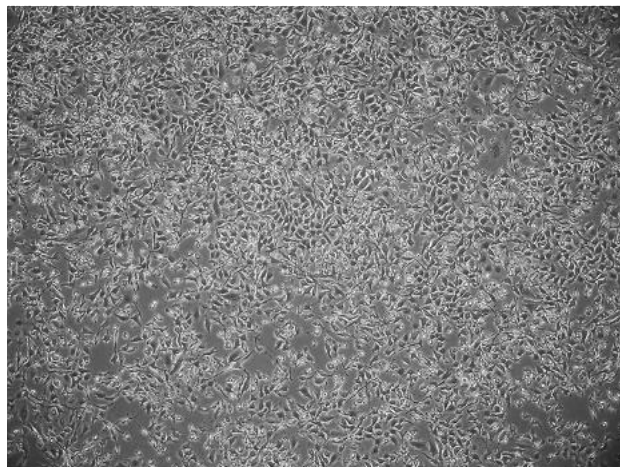
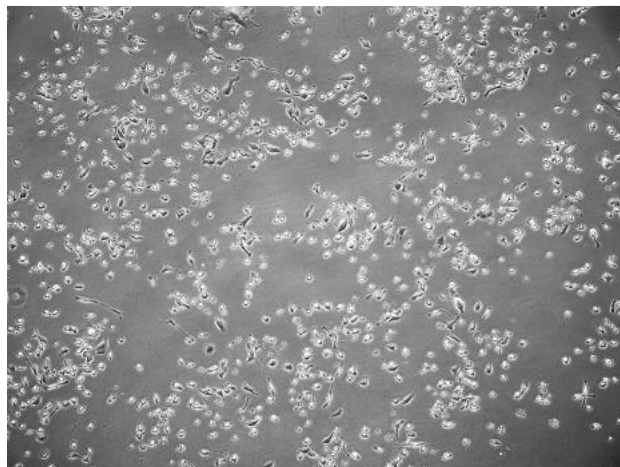


BT549 cells resistant to Paclitaxel

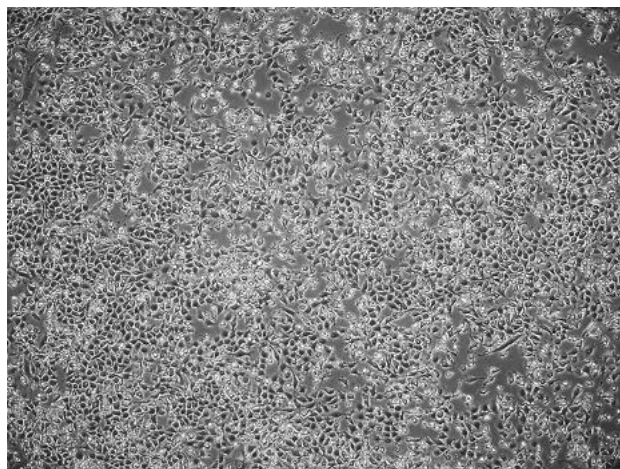
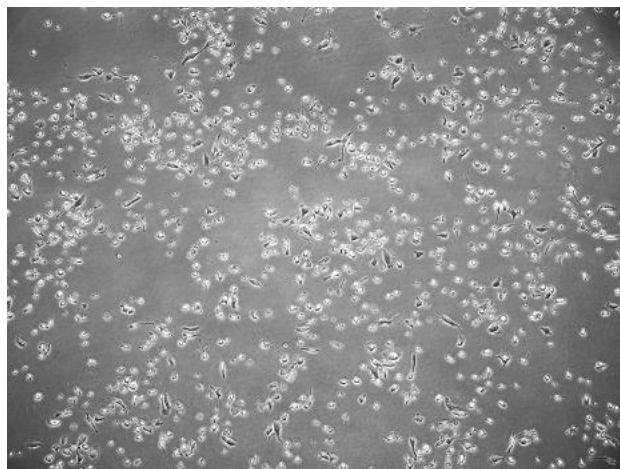
time 0h

time 72h

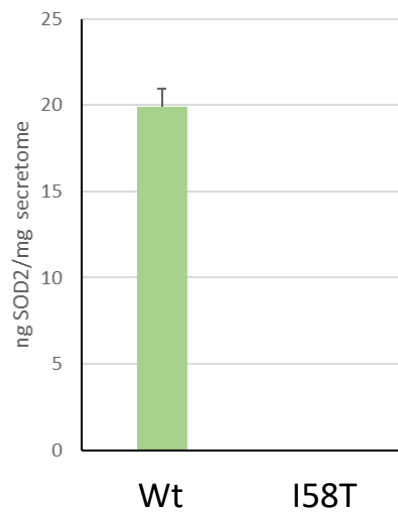
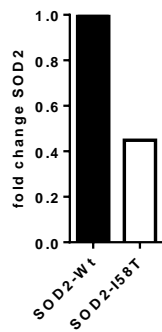
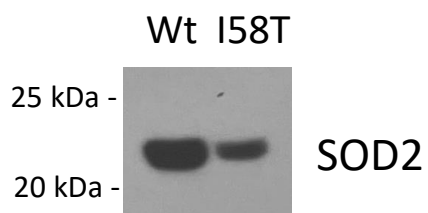
Control



Paclitaxel 4 nM



BT549 Secretomes



Uncropped blots

Figure 2A

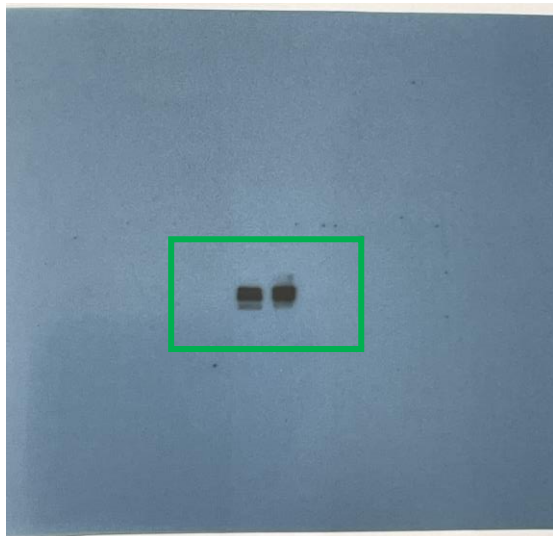


Figure 2A and 2C

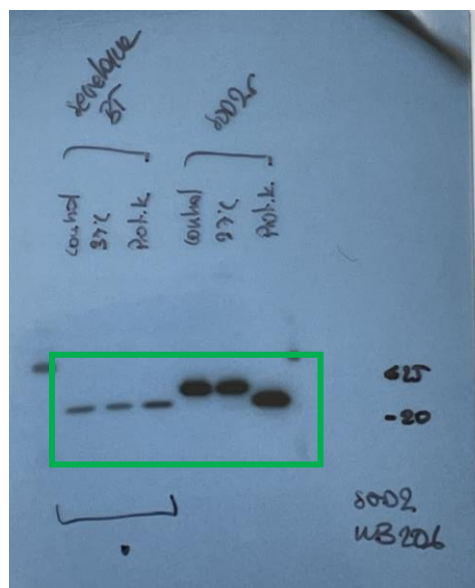
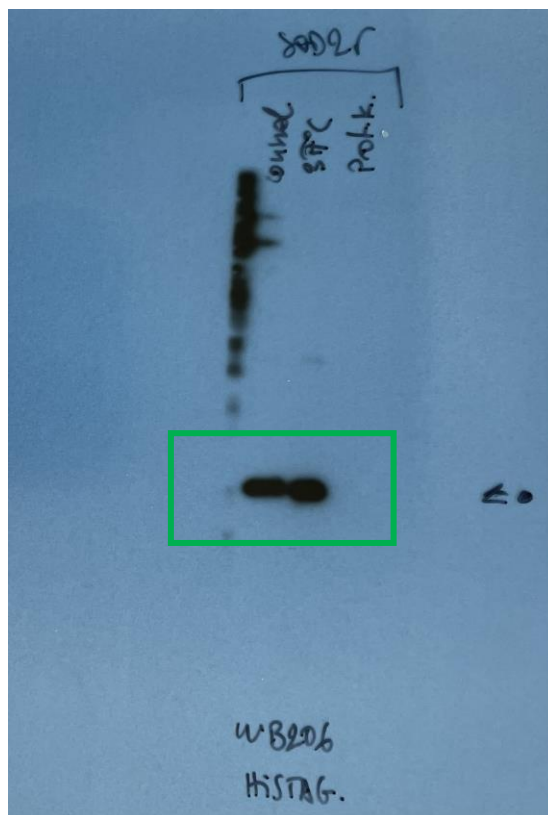


Figure 2C



WB normal. WB DTT mobil.

WT		T82		WT		T82	
-	+	-	+	-	+	-	+

Hisatani

WB200
αB200 & RB.

$\alpha \beta \gamma \delta \epsilon \zeta \eta \theta.$

Figure S3

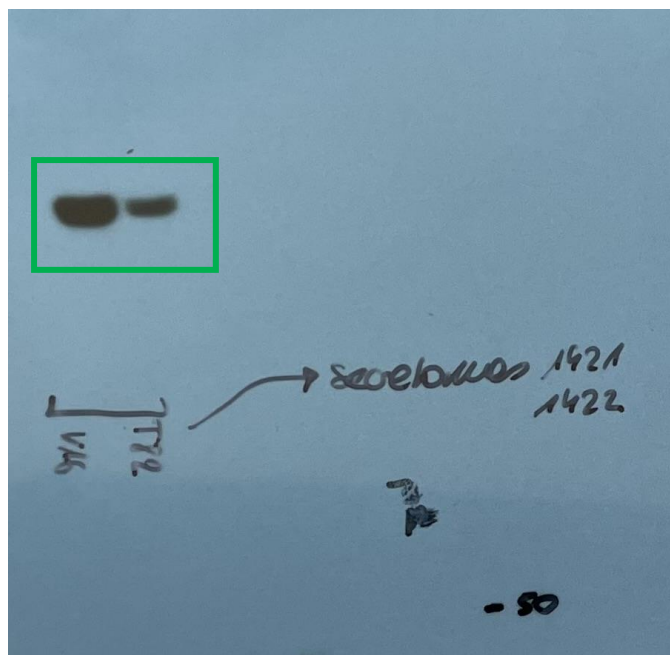


Figure 4B

