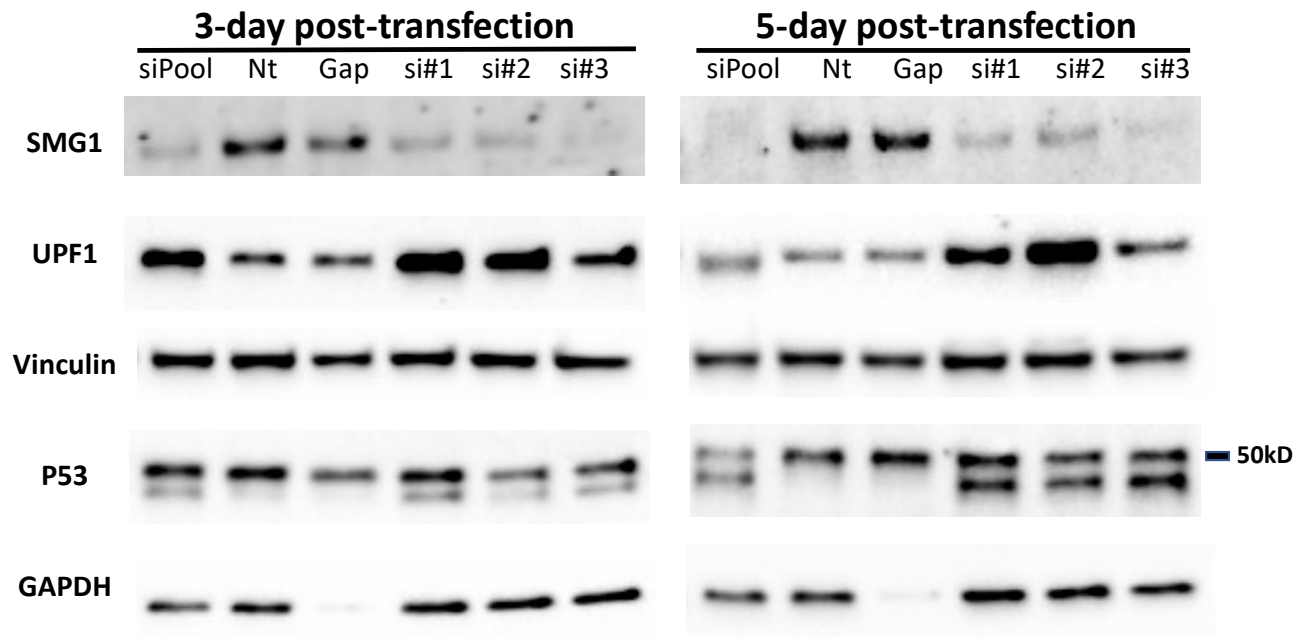


# Original Western blots

Whole blots/strips captured in ChemiDoc Imaging Systems are shown,  
density of bands (relative to control band) annotated.

**Figure 2B.**



Unpublished data

### 3-day post-transfection

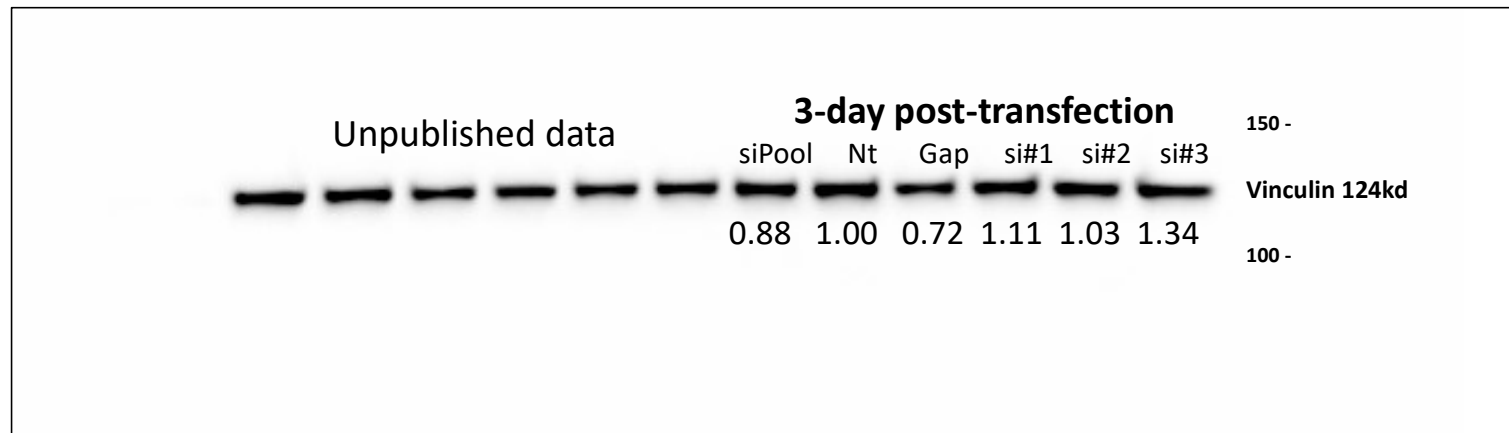
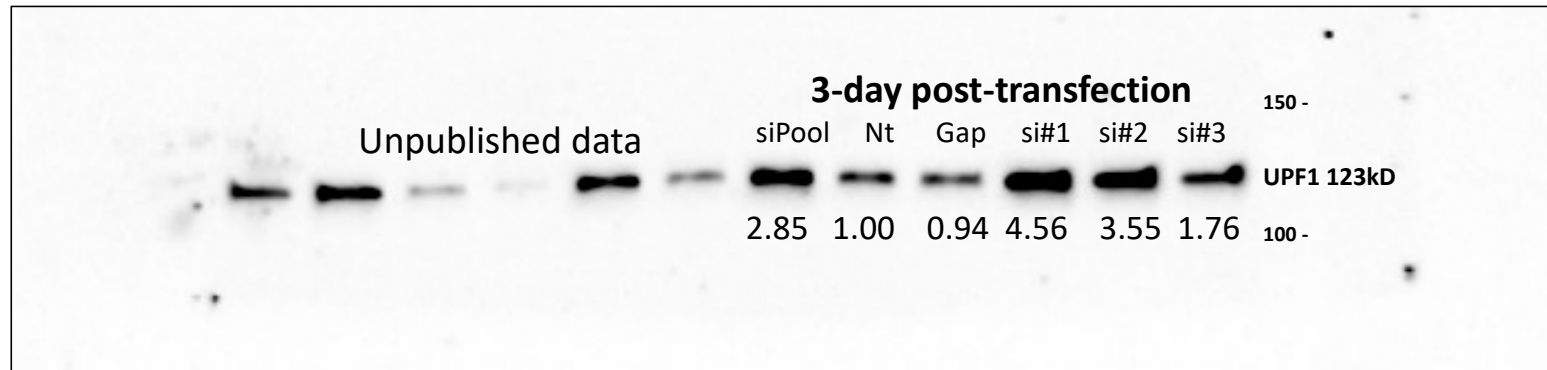
siPool Nt Gap si#1 si#2 si#3

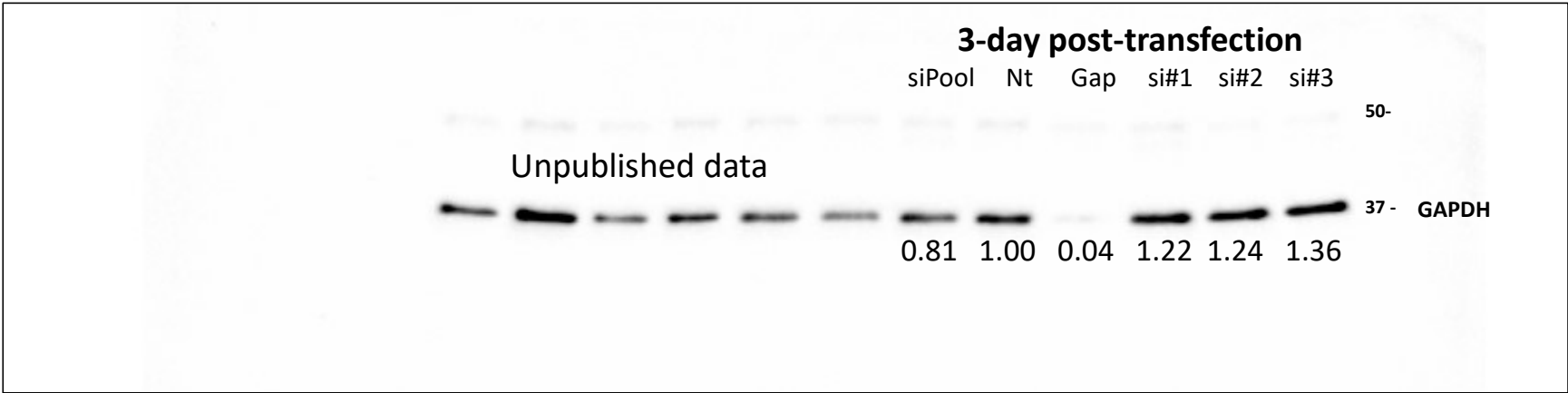
460 -  
SMG1 410kD

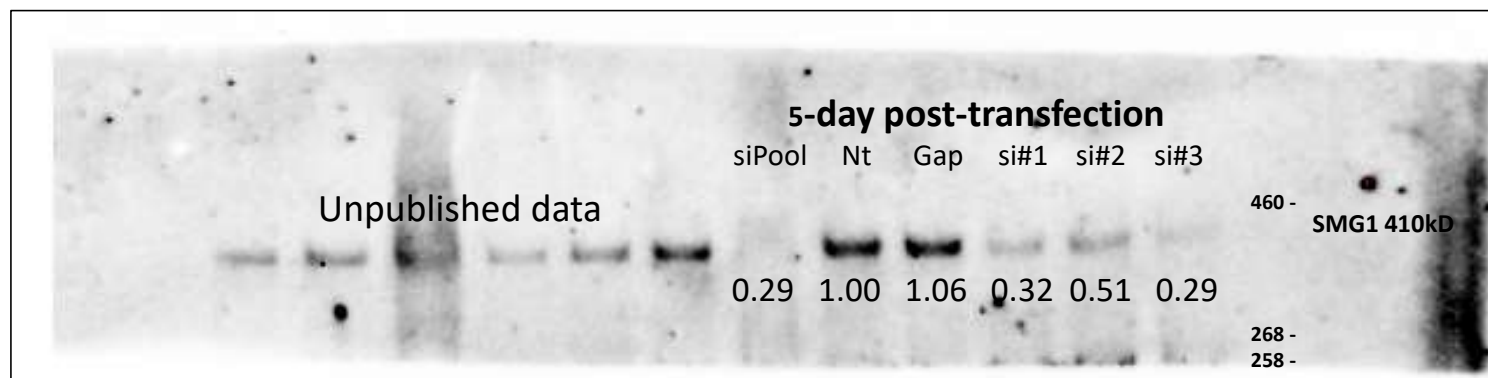
0.37 1.00 0.70 0.30 0.24 0.21

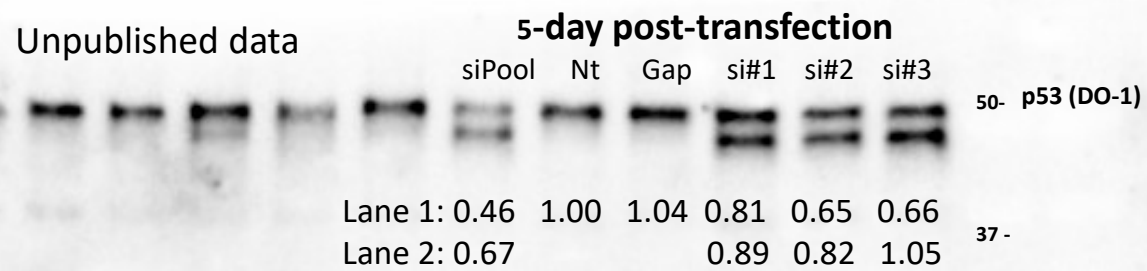
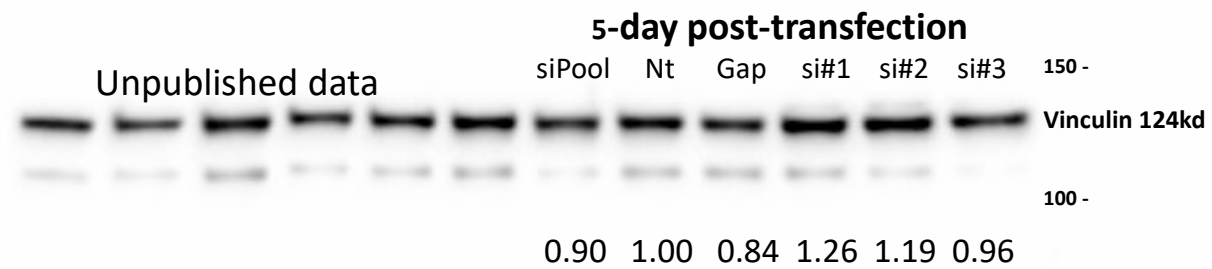
268 -  
258 -

Unpublished data









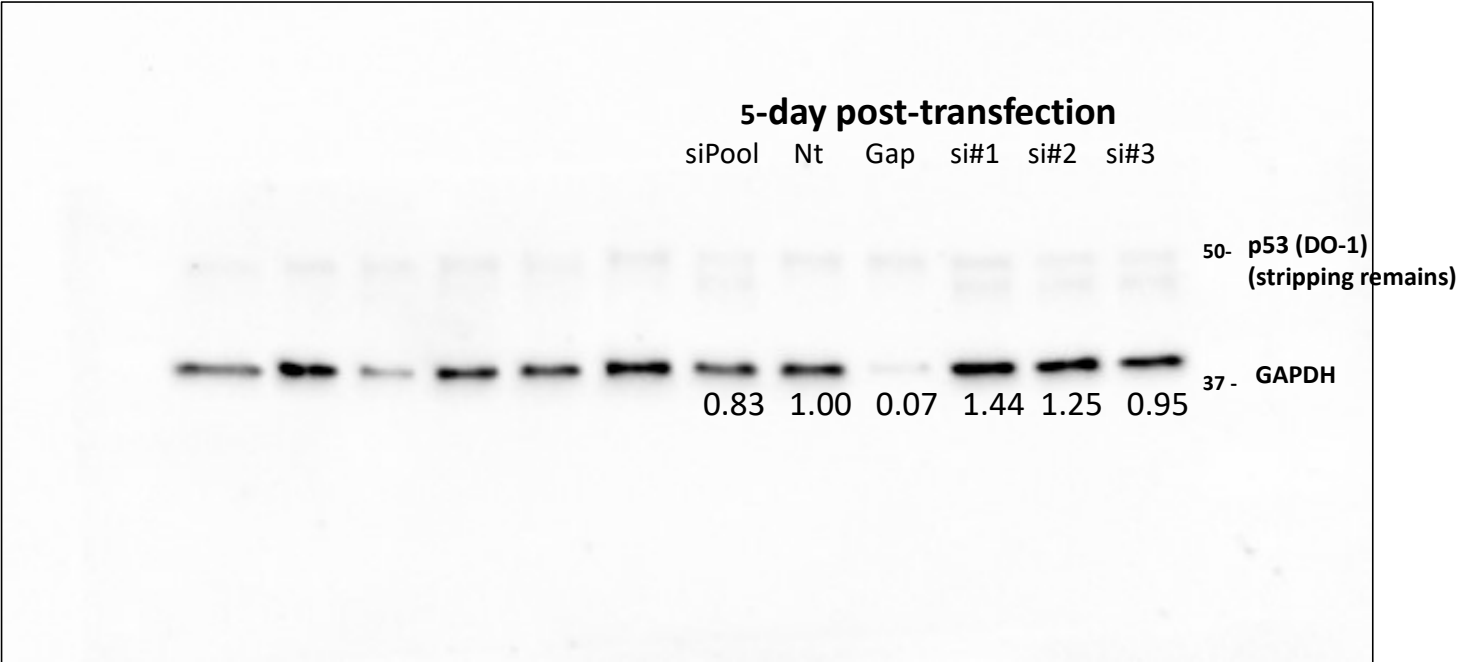
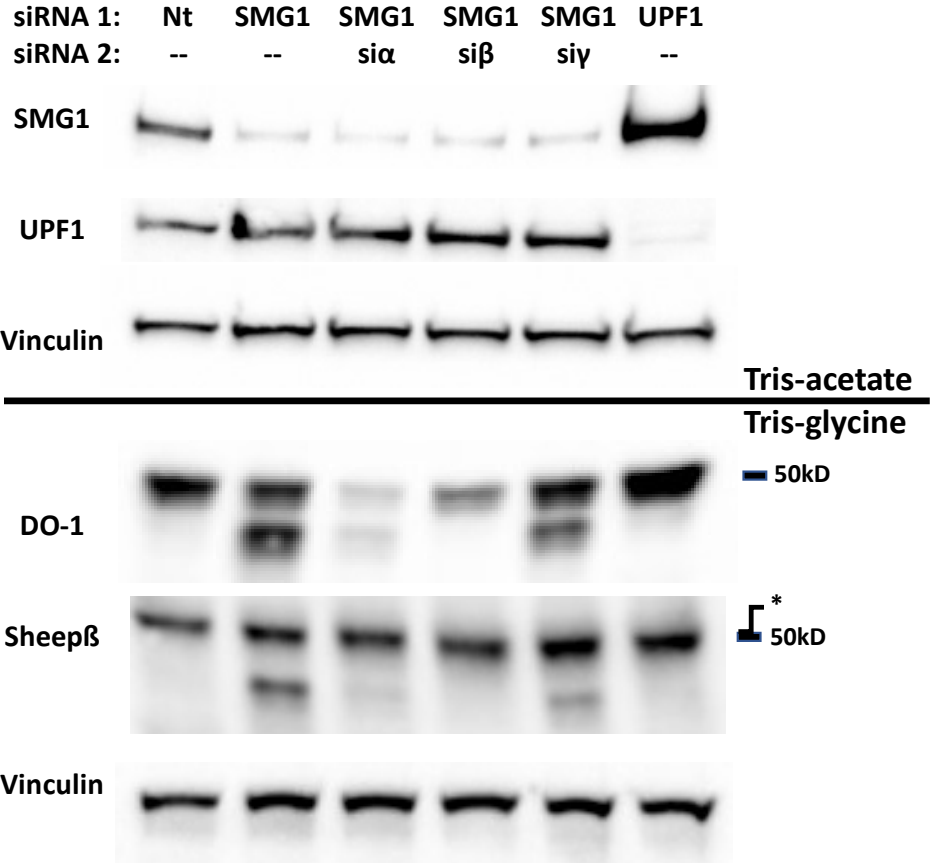
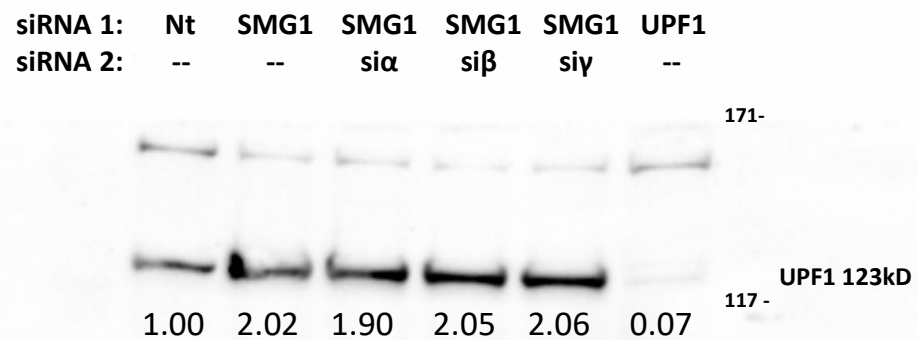
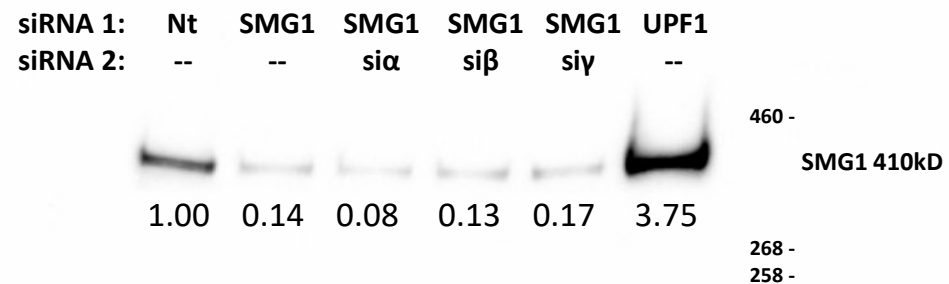
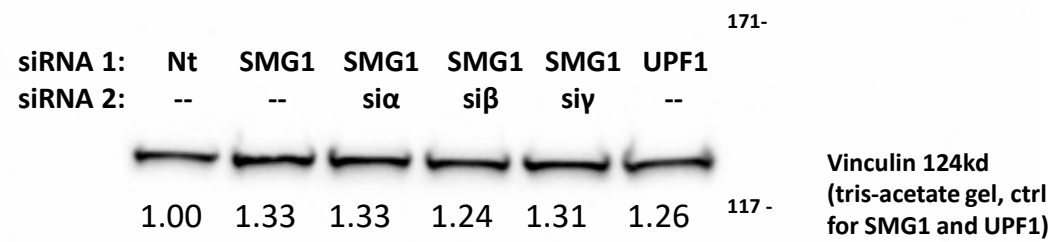


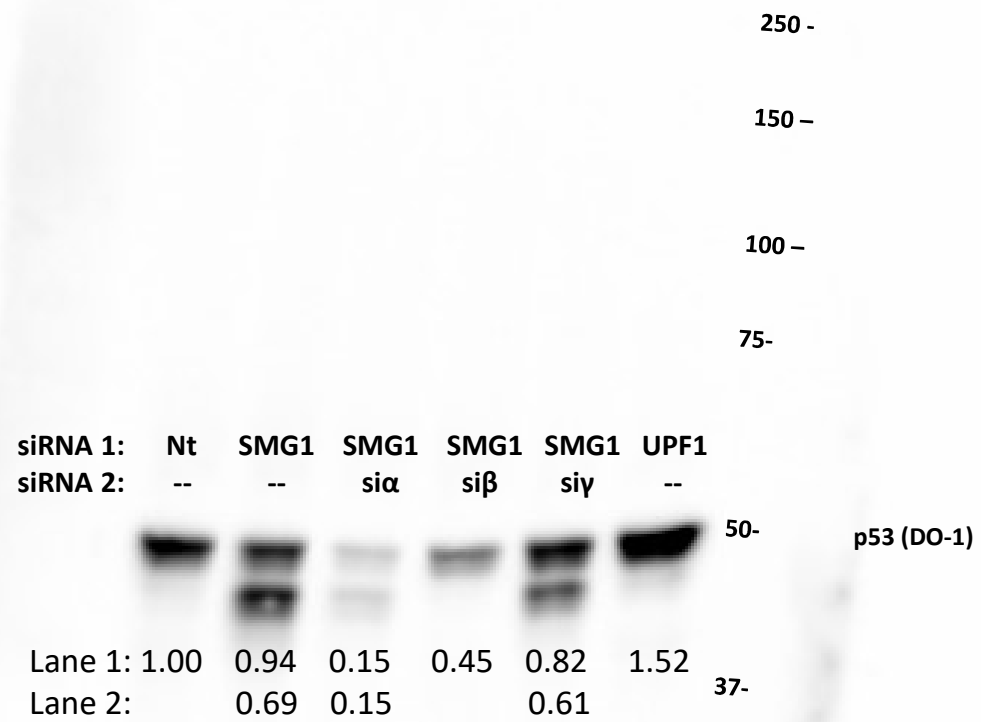


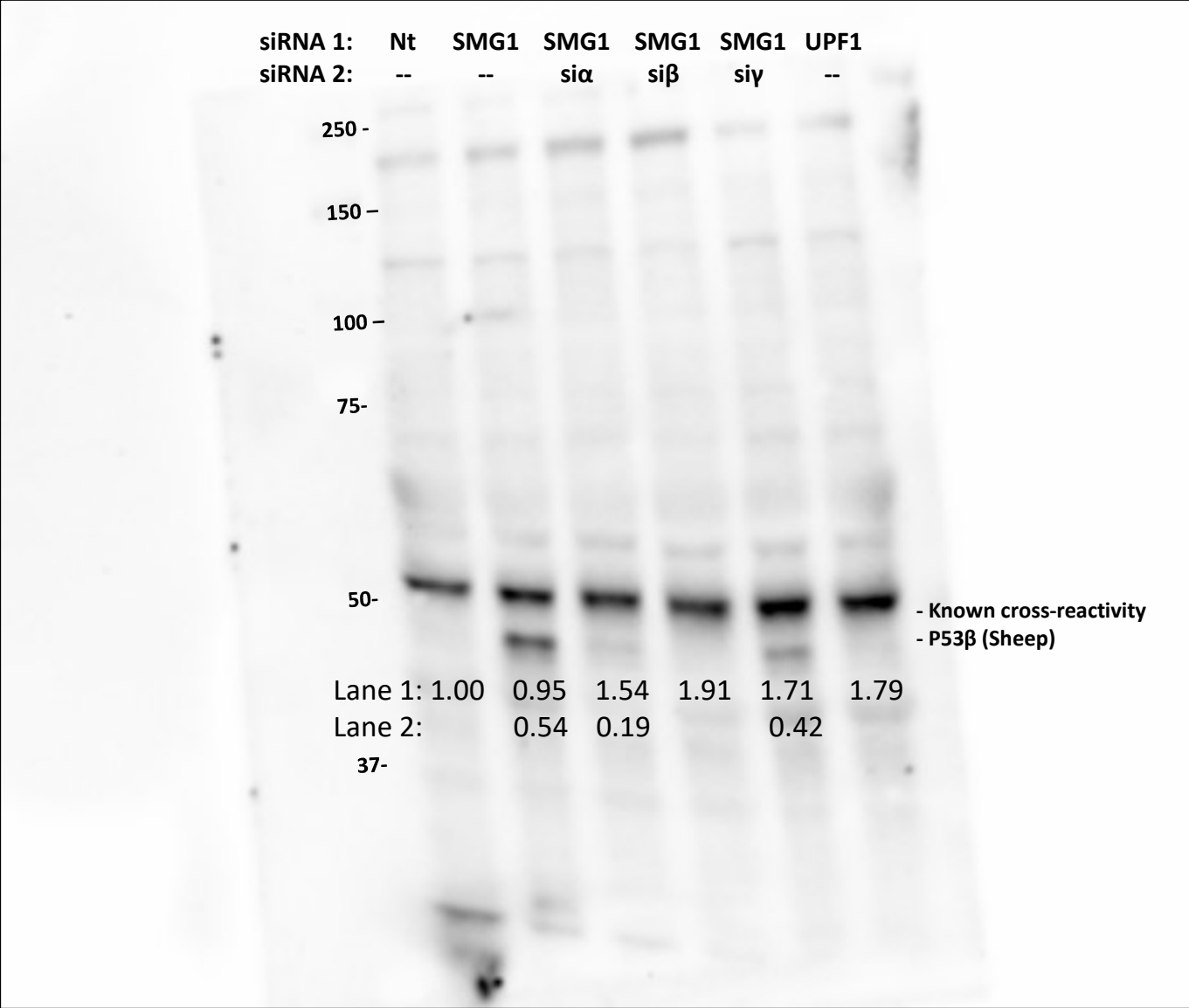
Figure. 2D



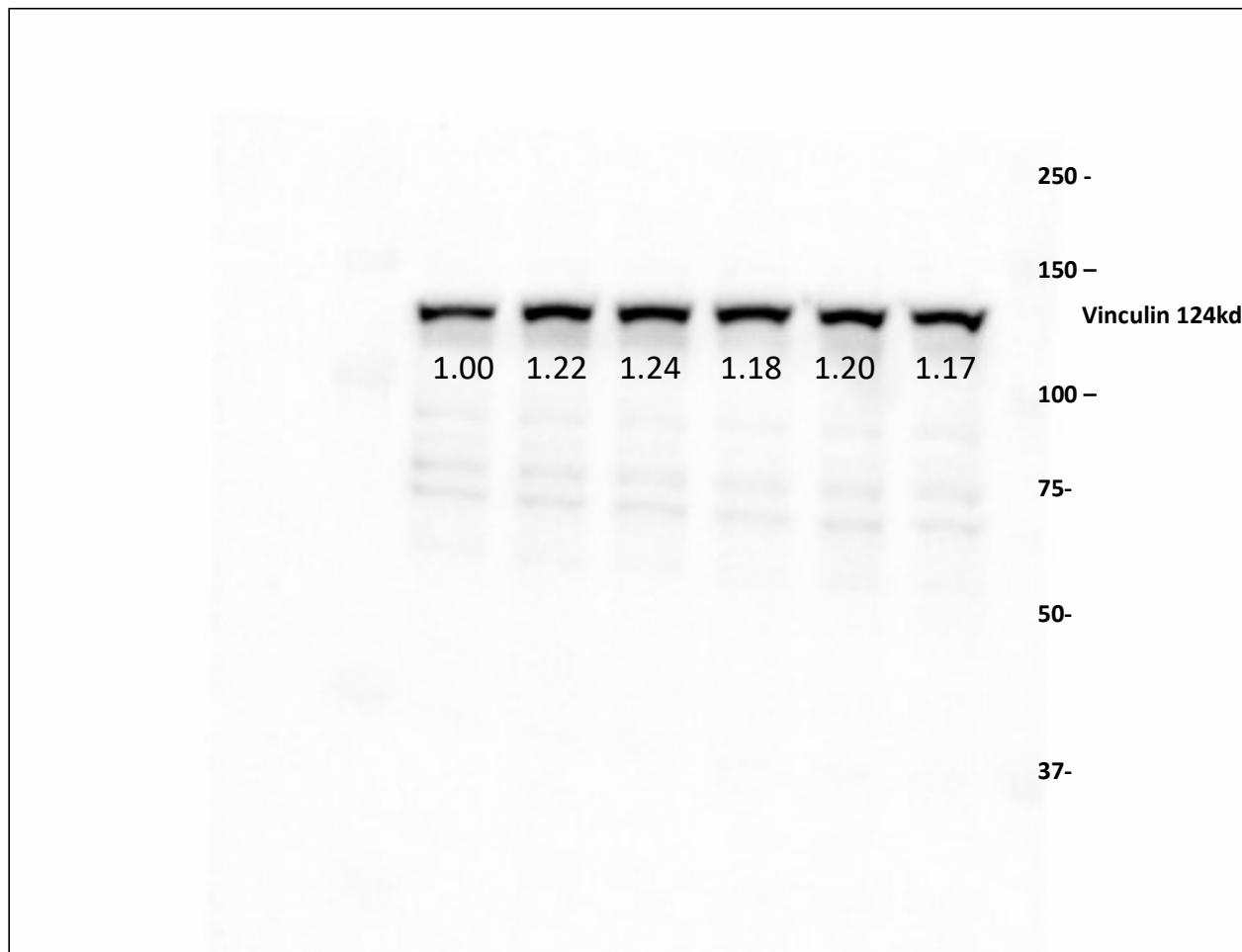




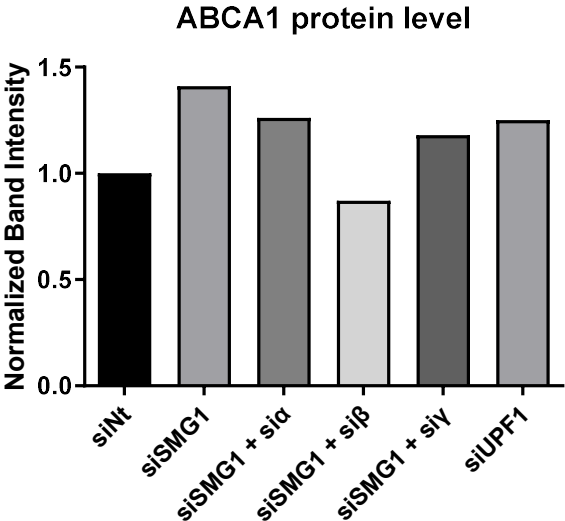
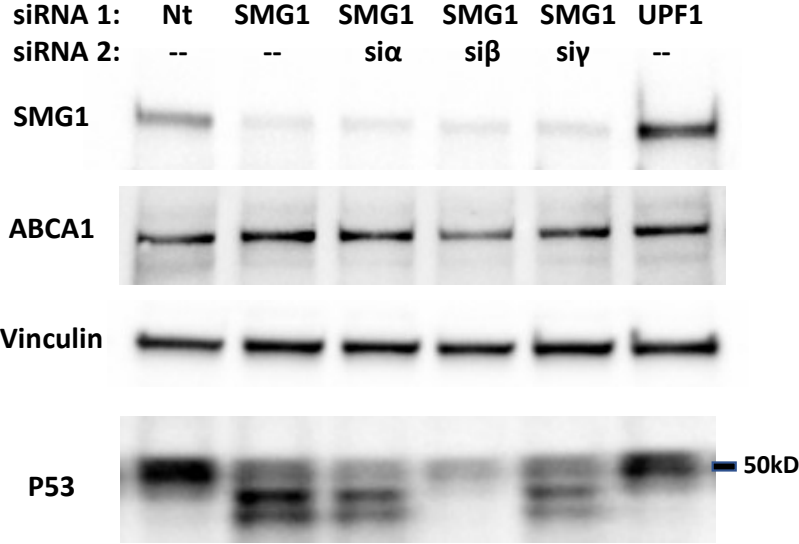


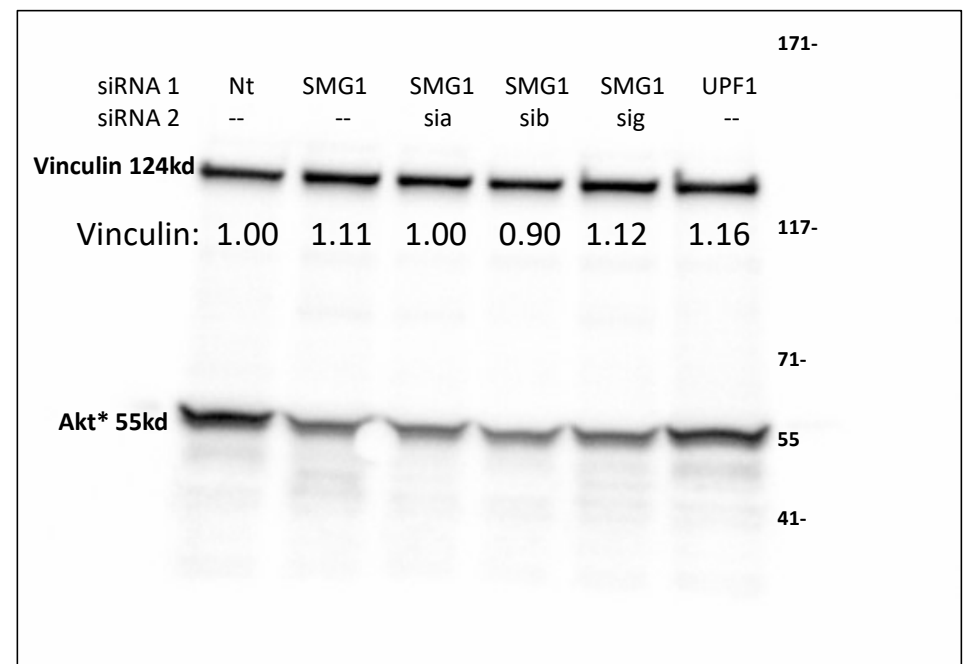
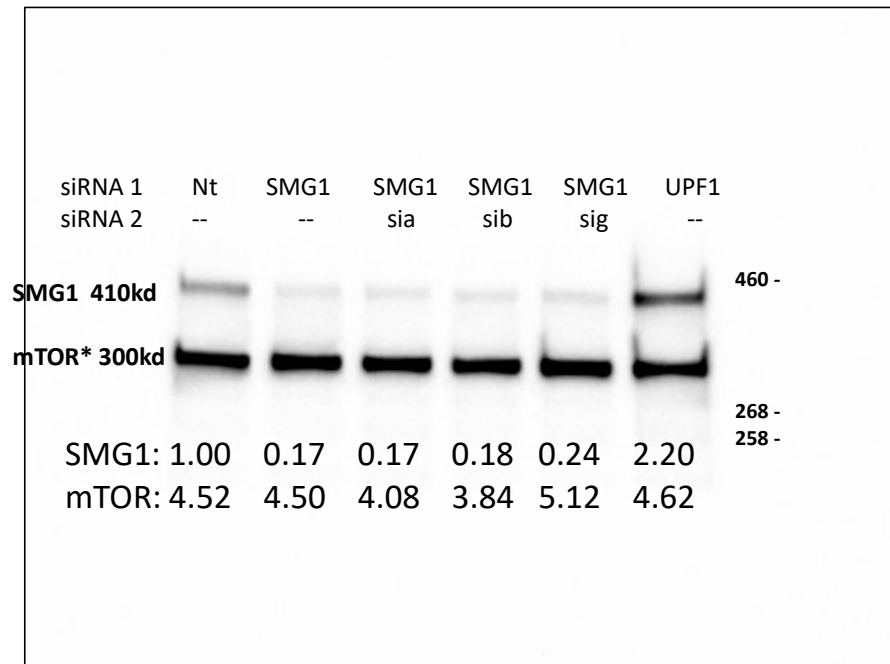


siRNA 1:	Nt	SMG1	SMG1	SMG1	SMG1	UPF1
siRNA 2:	--	--	si $\alpha$	si $\beta$	si $\gamma$	--



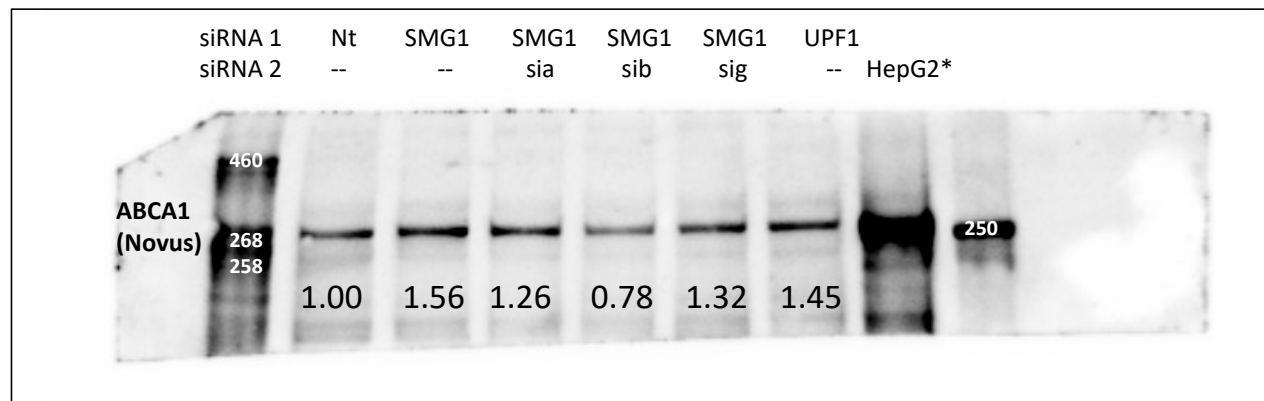
**Figure 3B.**





- mTOR and Akt were probed for explorational purpose but not described in the paper.
- High-quality Mouse Monoclonal antibodies that we have lots of experiences with are occasionally duplexed to save time and materials.





\* The HepG2 lane is cropped in the article. HepG2 is a liver cancer cell line that expresses a high level of cholesterol-related genes, making it an excellent ABCA1 antibody control.

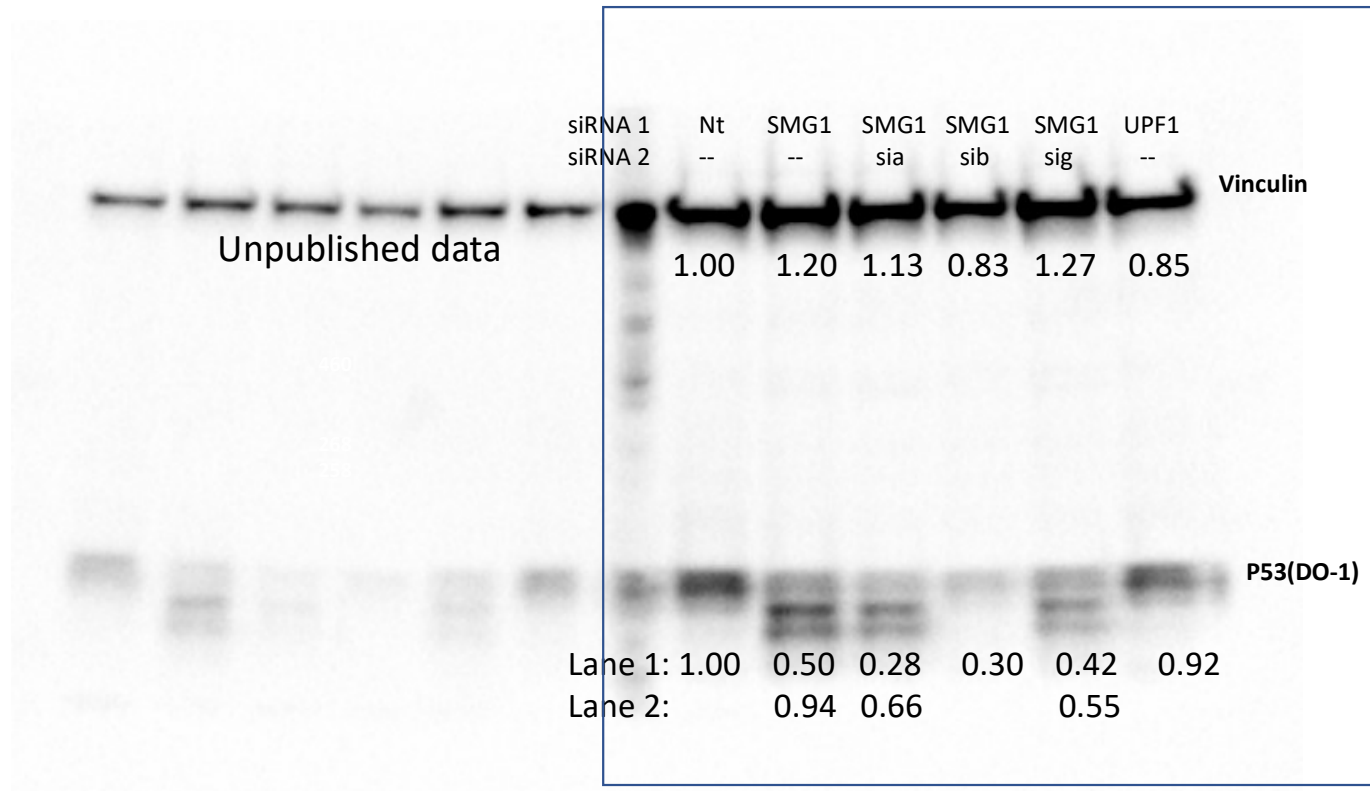
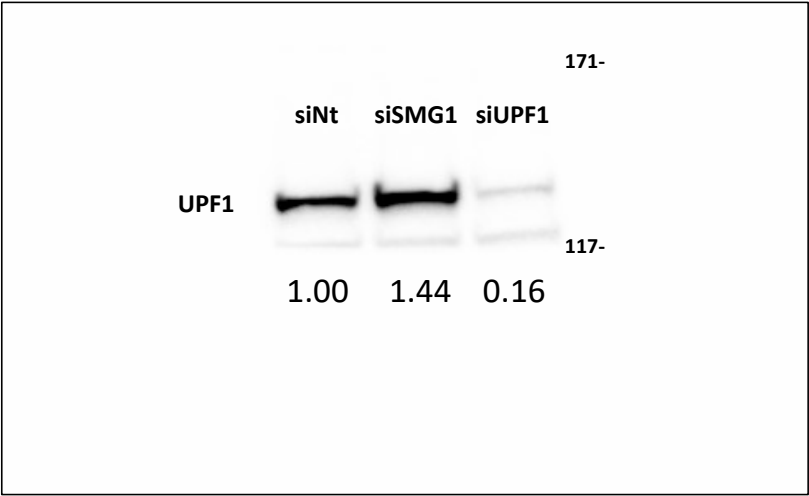
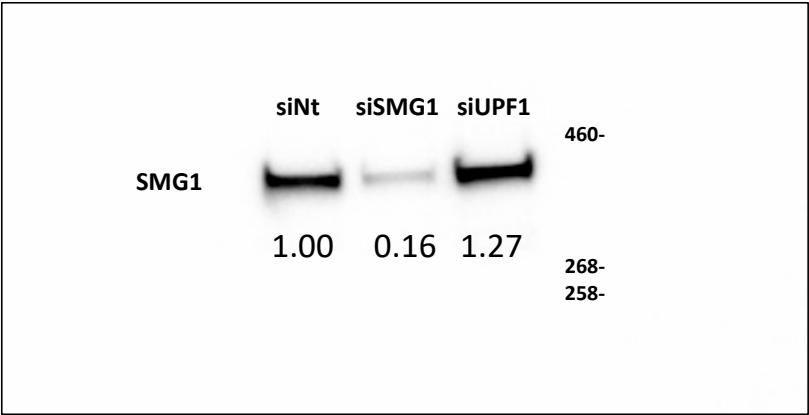
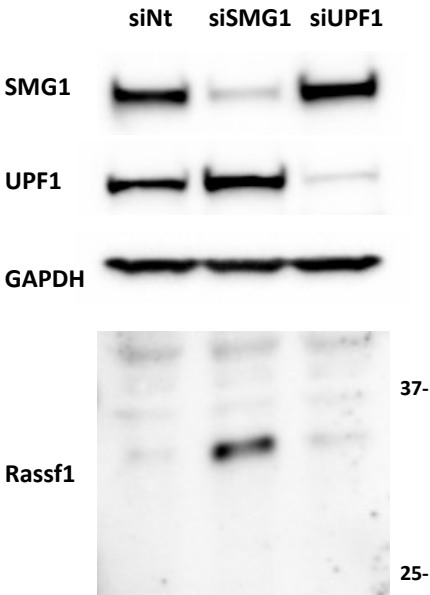
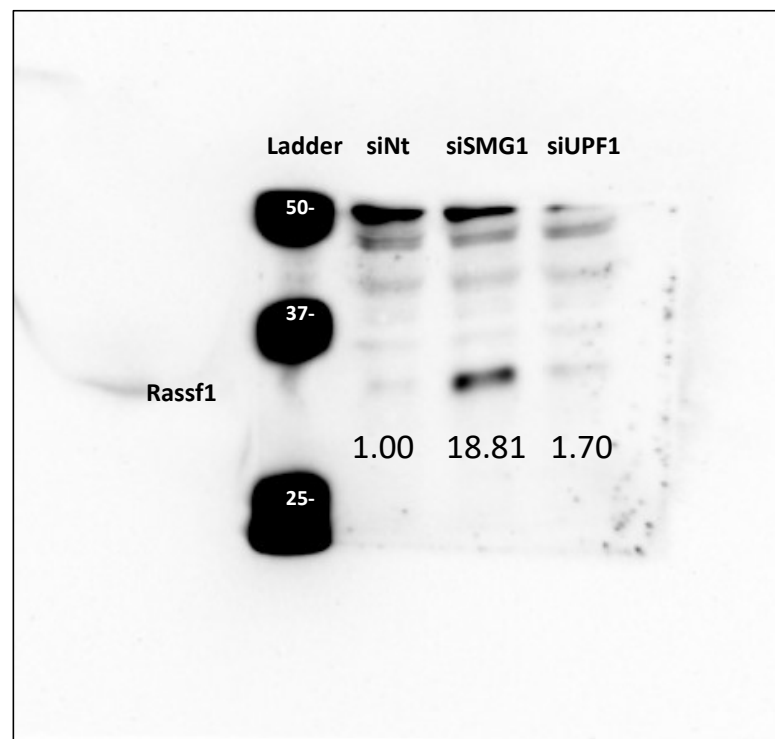
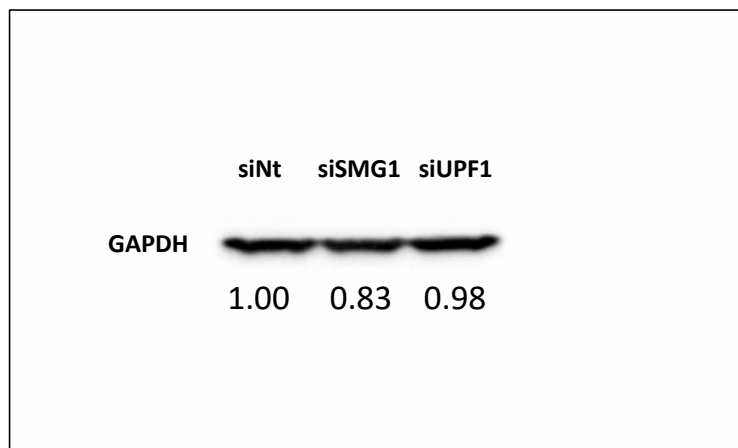


Figure. 4C





\* To more accurately locate rassf1 band considering it may have isoforms, we used Precision Plus Protein unstained standards and StrepTactin-HRP conjugate. This blot is 5-min exposure time, hence the ladder lane is overexposed.

Figure. S4

