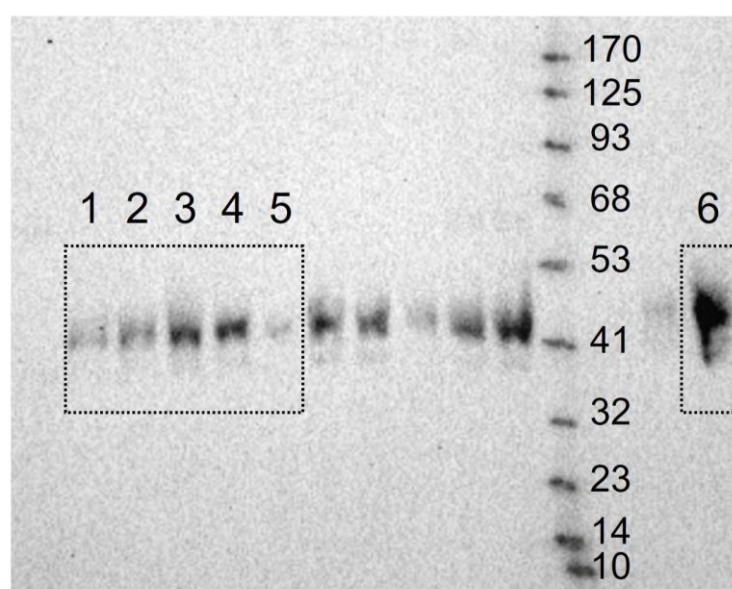


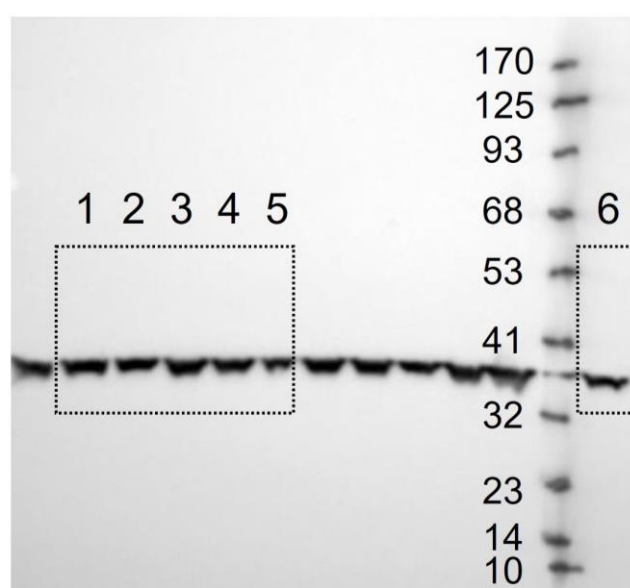
# PD-1/PD-L1 Checkpoint Inhibitors Are Active in the Chicken Embryo Model and Show Antitumor Efficacy *In Ovo*

Yan Wang <sup>1,\*</sup>, Xavier Rousset <sup>1</sup>, Chloé Prunier <sup>1</sup>, Paul Garcia <sup>1,2,3</sup>, Emilien Dosda <sup>1</sup>, Estelle Leplus <sup>4</sup> and Jean Viallet <sup>1,2</sup>

## PD-L1



## GAPDH



**Figure S1.** Western Blot Analysis of PD-L1 Expression on *in ovo* Xenografted H460 Tumors.