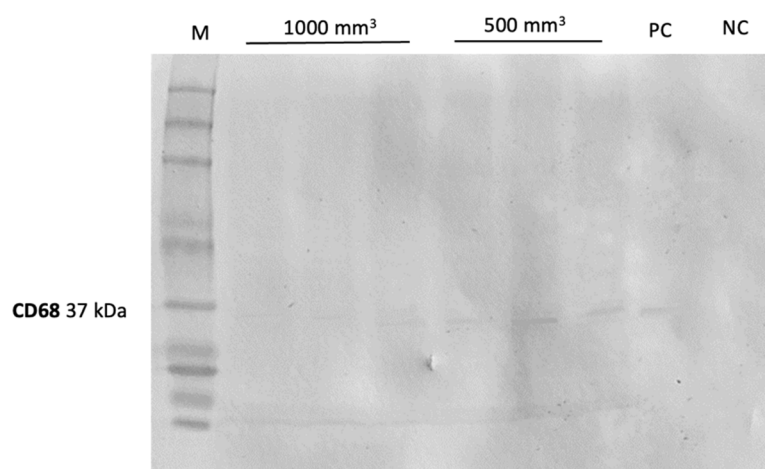
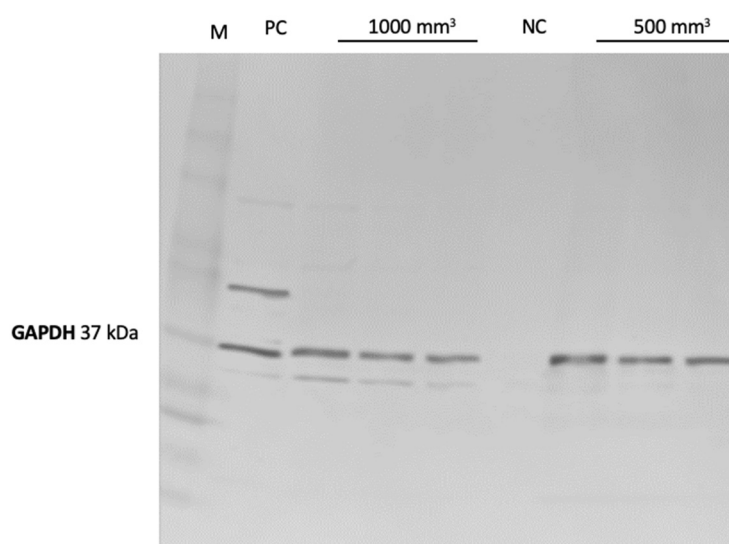


(A)



(B)



**Figure S1. Western Blot analyse.** **A:** Western Blot analyse for CD68. For each group, 3 tumors (n = 3 per group) were used for western blot analysis to detect the expression of CD68. Relative intensity from left to right: 290.1; 321.6; 302.7; 618; 966.0; 1144.4; PC: 1174.2. **B:** Western Blot analyse for GAPDH. For each group, 3 tumors (n = 3 per group) were used for western blot analysis to control protein levels.