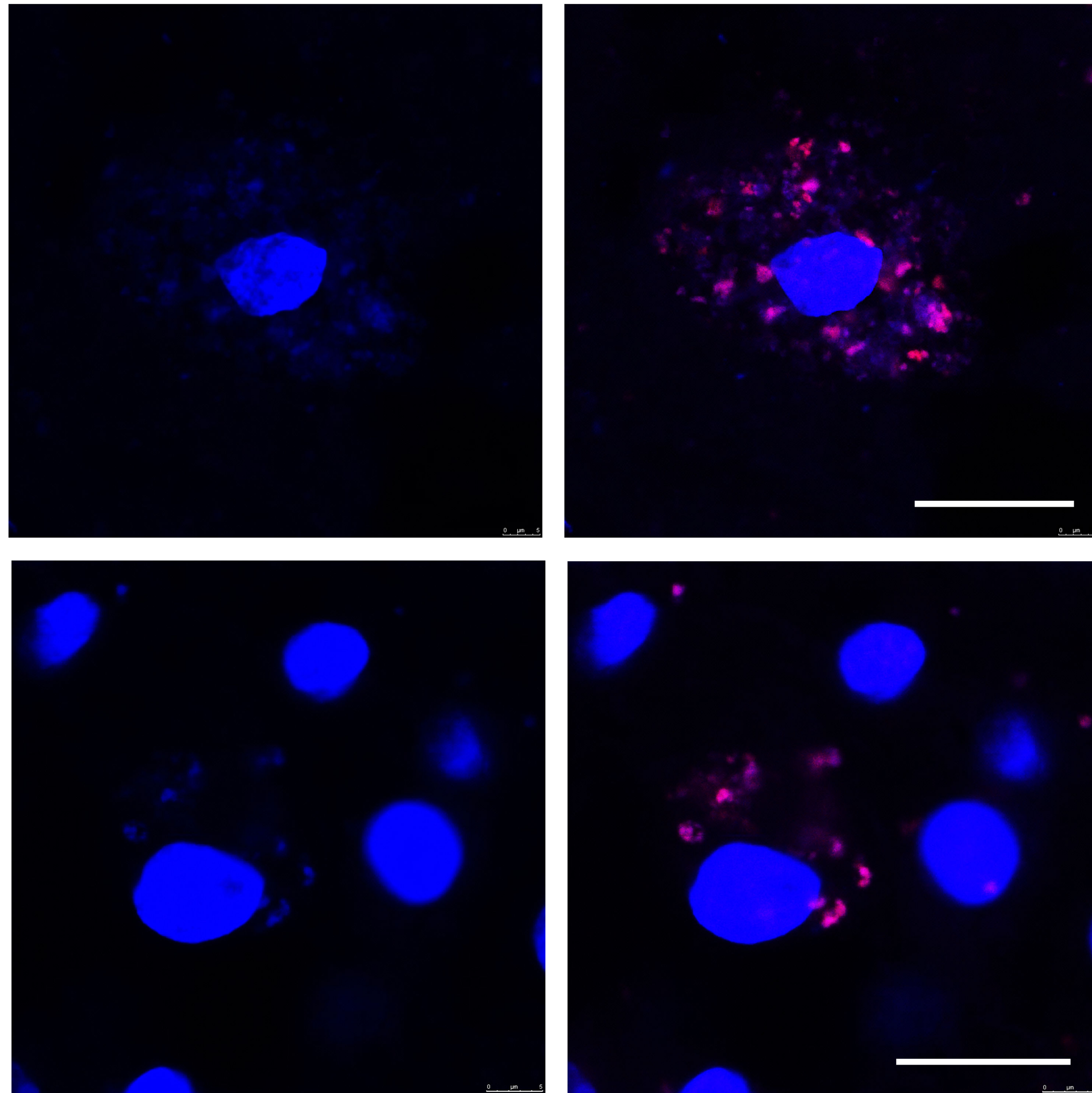


Supplementary Figure S2



Supplementary Figure S2 . Two-channel acquisition exciting a GBM sample (*Case #26 in Table 1*) with a 405 nm diode laser and acquiring the emission at wavelengths ranging from 416 to 480 nm (*left panels*) and from 630 to 700 nm (*right panels*). As for the excitation wavelength of 635 nm, 5-ALA gave a dotted signal in the cell cytoplasm. Scale bars, 20 μm .