

Article

Cannabinoid receptor type-2 in B cells is associated with tumor immunity in melanoma

Supplementary material

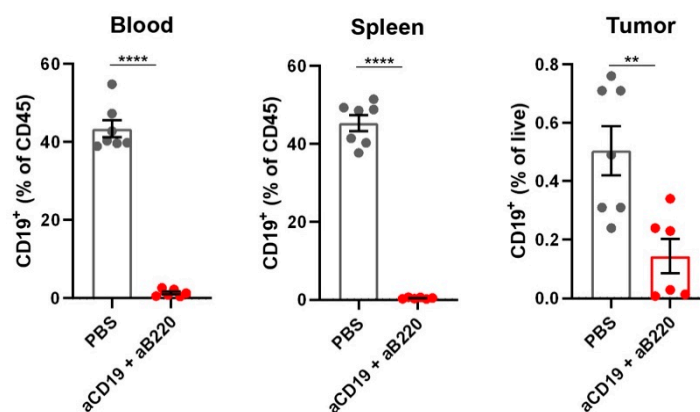


Figure S1. CD19⁺ B cell frequencies in indicated tissues with or without B cell depletion. B cells were depleted using anti-CD19 and anti-B220 depleting antibodies and analyzed at day 14 post tumor inoculation by flow cytometry (n = 6-7). Statistical analyses were performed using two-tailed, unpaired student's *t*-tests. Error bars show mean \pm SEM. * $p \leq 0.05$; **** $p \leq 0.0001$.