

Supplementary Materials

Nutritional Status as a Predictive Biomarker for Immunotherapy Outcomes in Advanced Head and Neck Cancer

Table S1. Correlation between age, baseline PNI, and pretreatment BMI trend

	Pearson's r	<i>p</i> value
Characteristic		
Age vs. baseline PNI	-0.0086	0.93
Age vs. pretreatment BMI trend	-0.23	0.05
Baseline PNI vs. pretreatment BMI trend	-0.15	0.19

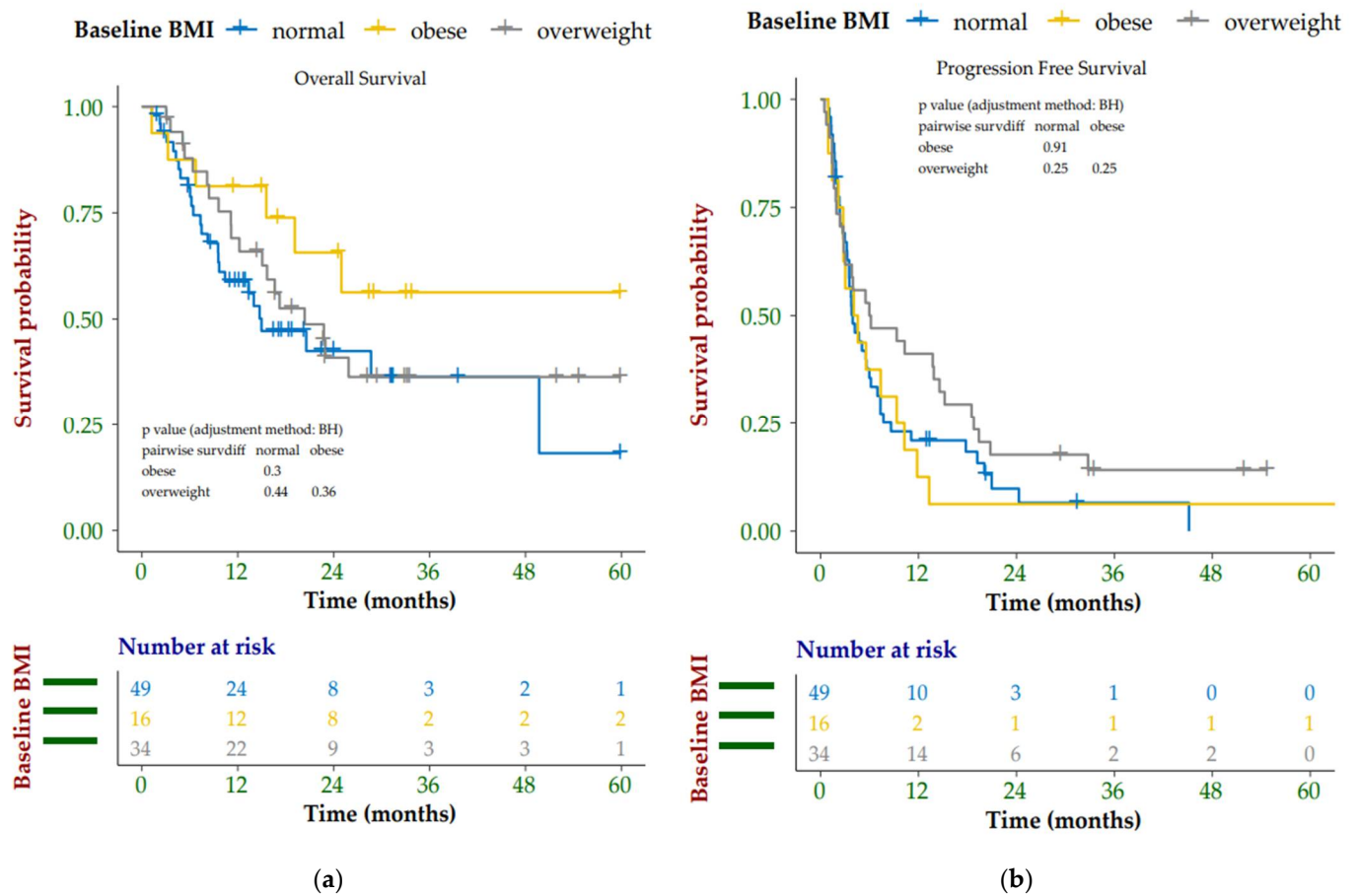


Figure S1. Kaplan-Meier survival curves displaying (a) OS according to baseline BMI group; (b) PFS by baseline BMI group

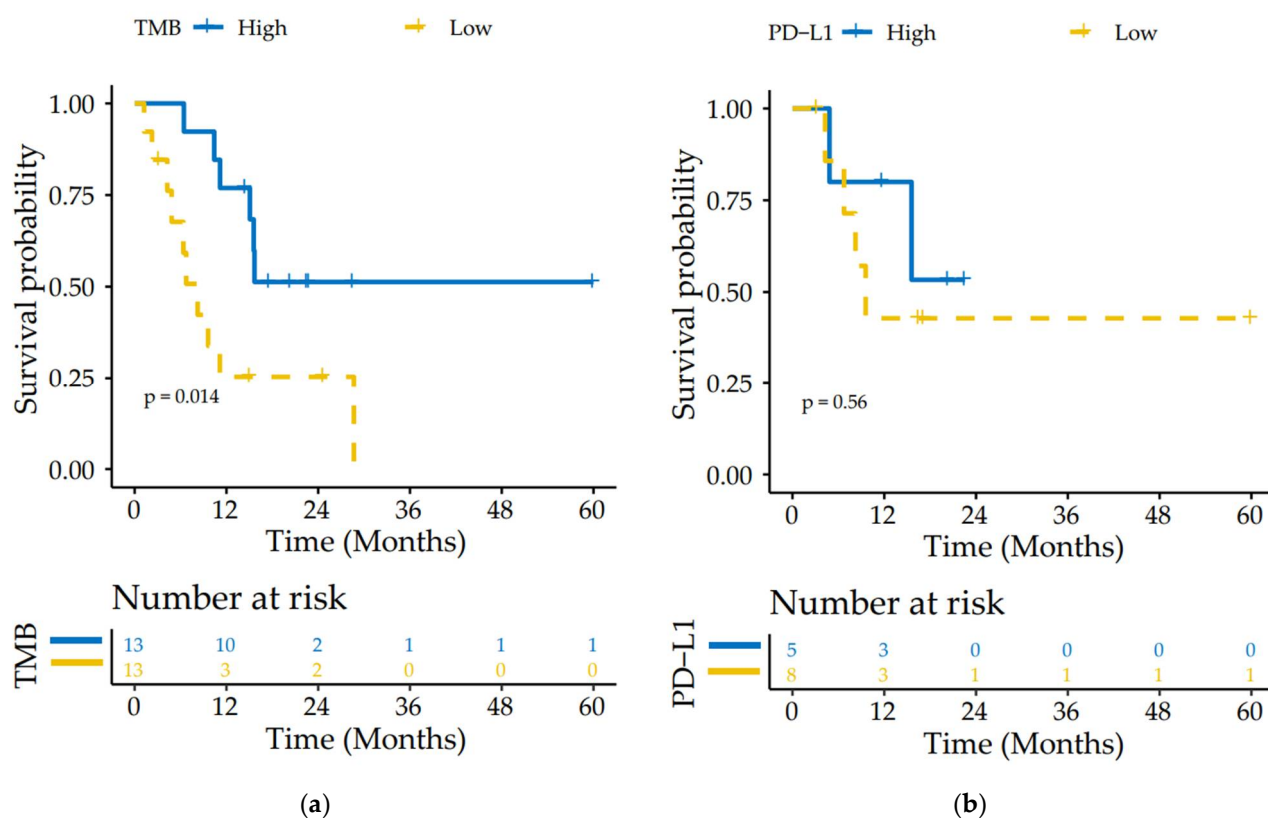


Figure S2. Kaplan-Meier survival curves displaying (a) OS according to TMB group; (b) OS according to PD-L1 group