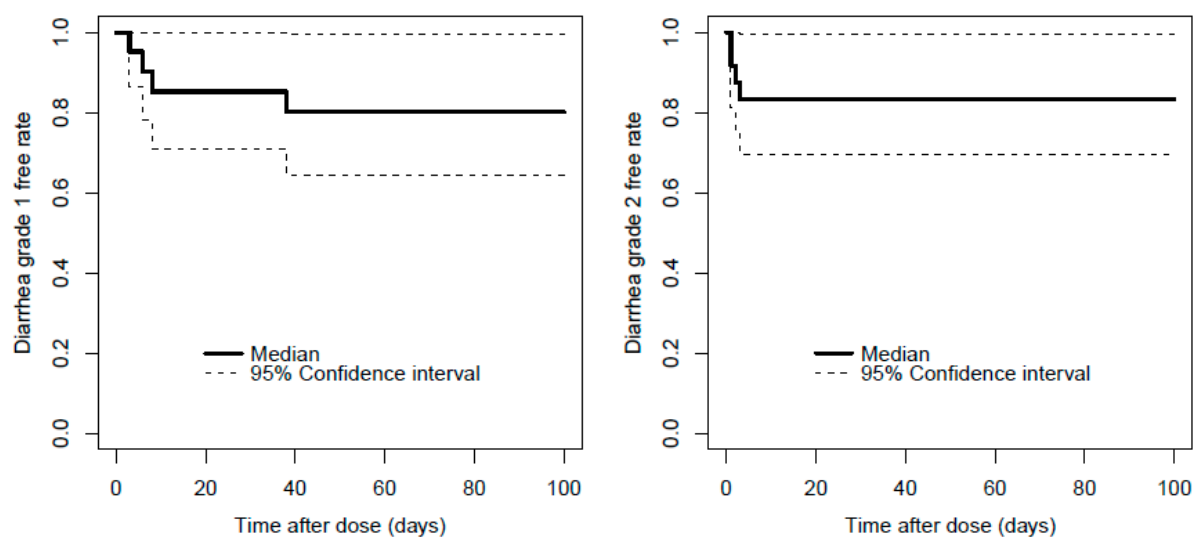


Supplementary Table S1. Intra-day and inter-days variabilities of measurement method.

| Theoretical value (ng mL ⁻¹) | Intra-day variability (n=6) | | | Inter-days variability (n=5) | | |
|---|--|------------------|-----------------|--|------------------|-----------------|
| | Measured value (ng mL ⁻¹) | Precision (%) | Accuracy (%) | Measured value (ng mL ⁻¹) | Precision (%) | Accuracy (%) |
| 0.3125 | 0.32 (0.02) | 5.2 | 103 | 0.34 (0.01) | 3.7 | 108 |
| 2.5 | 2.61 (0.11) | 4.1 | 104 | 2.58 (0.11) | 4.4 | 103 |
| 10 | 10.14 (0.73) | 7.2 | 101 | 9.15 (0.42) | 4.6 | 91 |



Supplementary Figure S1. Time between bortezomib dosing and emergence of diarrhea stratified by grading. Left, diarrhea grade 1. Right, diarrhea grade 2.