

Supplementary Material: Serum DJ-1 is a Biomarker of Colorectal Cancer and DJ-1 Activates Mitophagy to Promote Colorectal Cancer Progression

William Tzu-Liang Chen, Han-Bin Yang, Tao-Wei Ke, Wen-Ling Liao and Shih-Ya Hung

Table S1. The characters of colorectal cancer patients.

Characters	TNM	Stage I (n = 20)	Stage II (n = 28)	Stage III (n = 23)	Stage IV (n = 26)
Gender					
Male		10 (50.0%)	13 (46.4%)	16 (69.6%)	16 (61.5%)
Female		10 (50.0%)	15 (53.6%)	7 (30.4%)	10 (38.5%)
Age (years old)					
Mean±SE		62.2±3.2	64.1±2.0	67.6±2.7	59.6±3.0
Median (Min, Max)		61.5 (85.0, 40.0)	66.0 (47.0, 84.0)	70.0 (42.0, 87.0)	61.0 (28.0, 85.0)
Radiotherapy					
Yes		1 (5.0%)	3 (10.7%)	1 (4.3%)	1 (3.8%)
No		19 (95.0%)	15 (89.3%)	22 (95.7%)	25 (96.2%)
Chemotherapy					
Yes		1 (5.0%)	8 (28.6%)	2 (8.7%)	10 (38.5%)
No		19 (95.0%)	20 (71.4%)	21 (91.3%)	16 (61.5%)
Targeted treatment					
Yes		0 (0.0%)	0 (0.0%)	0 (0.0%)	1 (3.8%)
No		20 (100.0%)	28 (100.0%)	23 (100.0%)	25 (96.2%)
Surgical management					
Yes		20 (100.0%)	28 (100.0%)	23 (100.0%)	26 (100.0%)
No		0 (0.0%)	0 (0.0%)	0 (0.0%)	0 (0.0%)
Lymph node invasion					
Yes		0 (0.0%)	0 (0.0%)	23 (100.0%)	26 (100.0%)
No		20 (100.0%)	28 (100.0%)	0 (0.0%)	0 (0.0%)
Distant metastatic					
Yes		0 (0.0%)	0 (0.0%)	0 (100.0%)	26 (100.0%)
NO		20 (100.0%)	28 (100.0%)	23 (100.0%)	0 (0.0%)

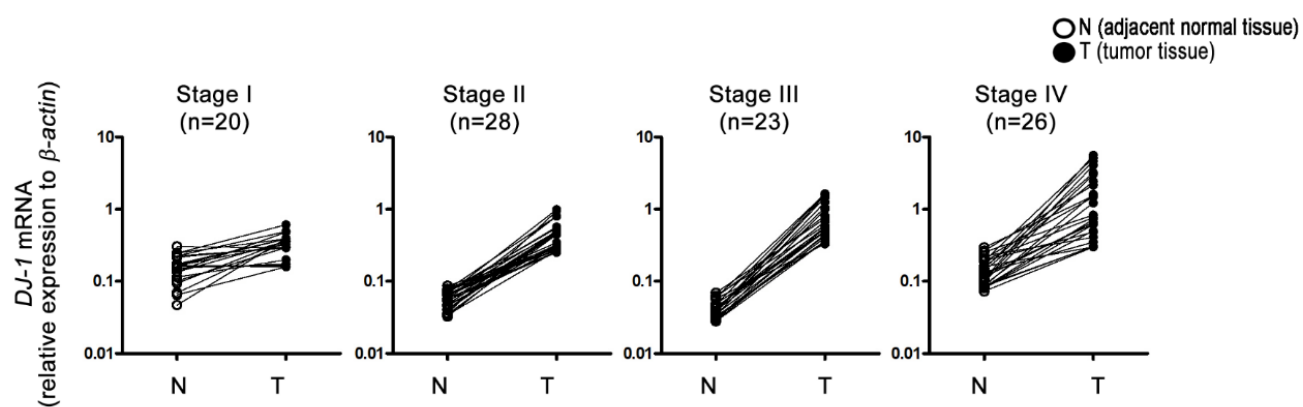


Figure S1. The relative expression level of *DJ-1* mRNA in each tissue pair of adjacent normal tissue (N) and colorectal tumor tissue (T) from TNM stage I, II, III, IV colorectal cancer patients. *DJ-1* expression in each tissue is presented as relative expression to β -actin.

Figure 2A

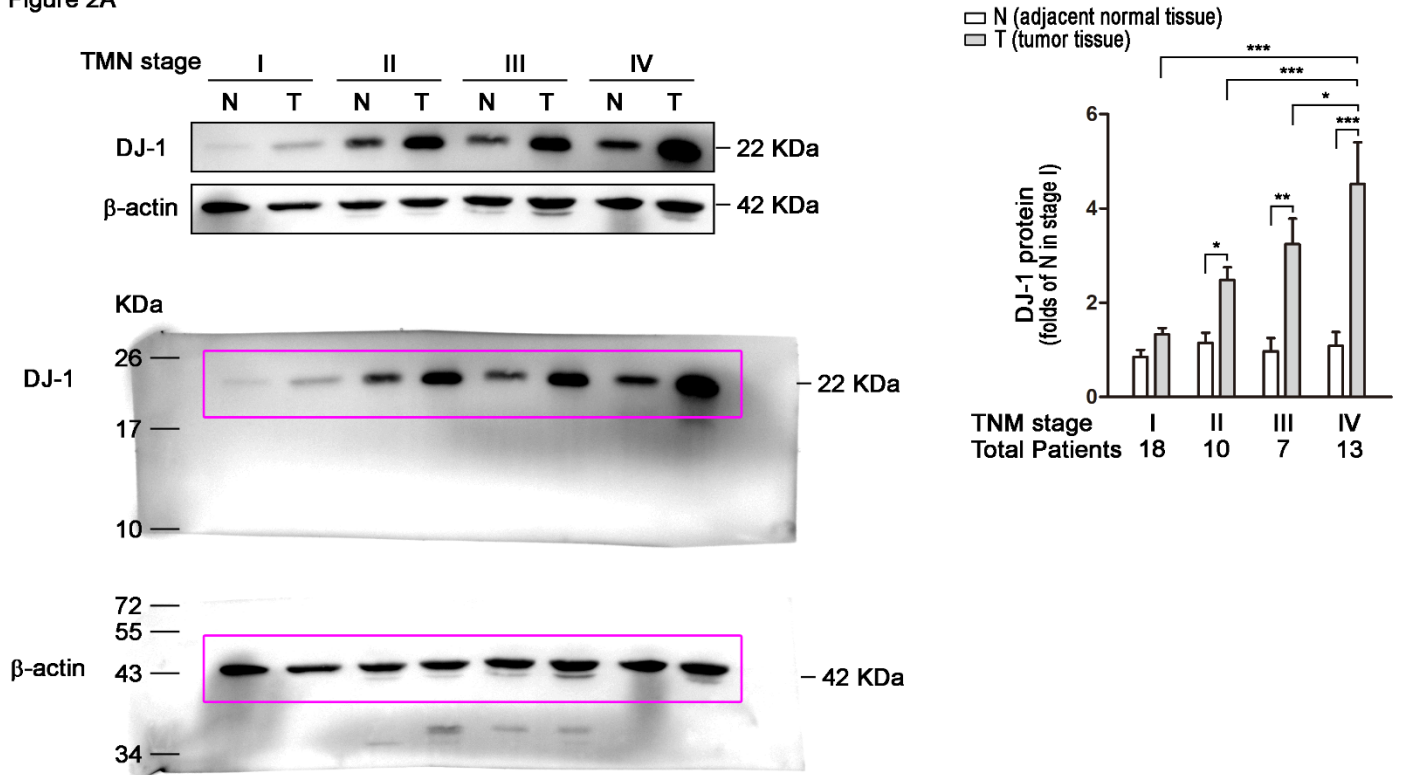


Figure S2. Uncropped Figure 2A. * The quantification data of DJ-1 protein levels are shown at the right panel. Quantitative data are expressed as the means \pm S.E.M; the p-value was determined by one-way ANOVA/Newman-Keuls test. *: $p < 0.05$, **: $p < 0.01$, ***: $p < 0.001$ compared with the respectively group.

Figure 4A

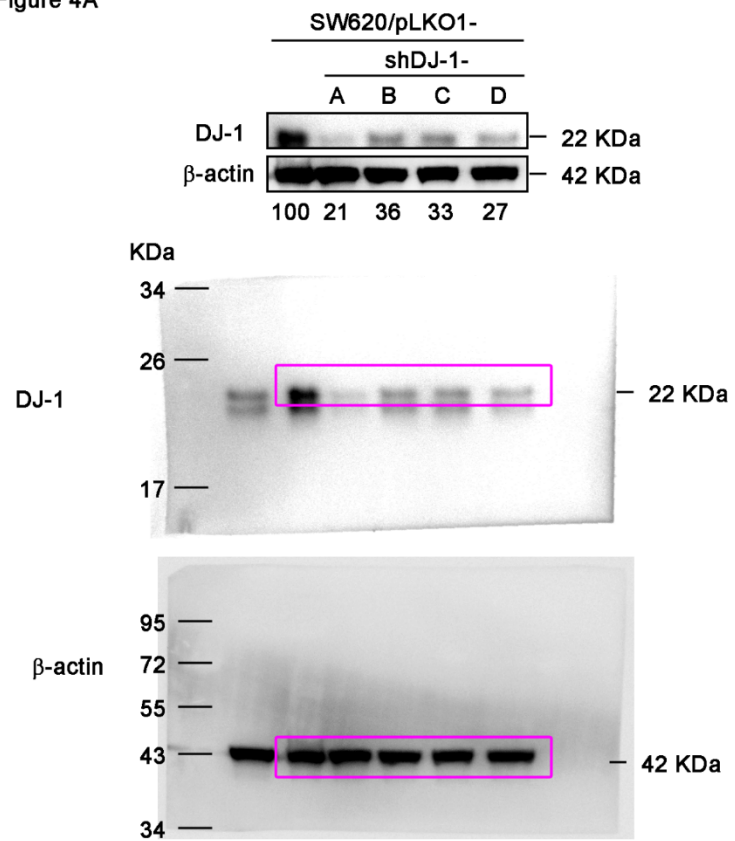


Figure S3. Uncropped Figure 4A.

Figure 5A

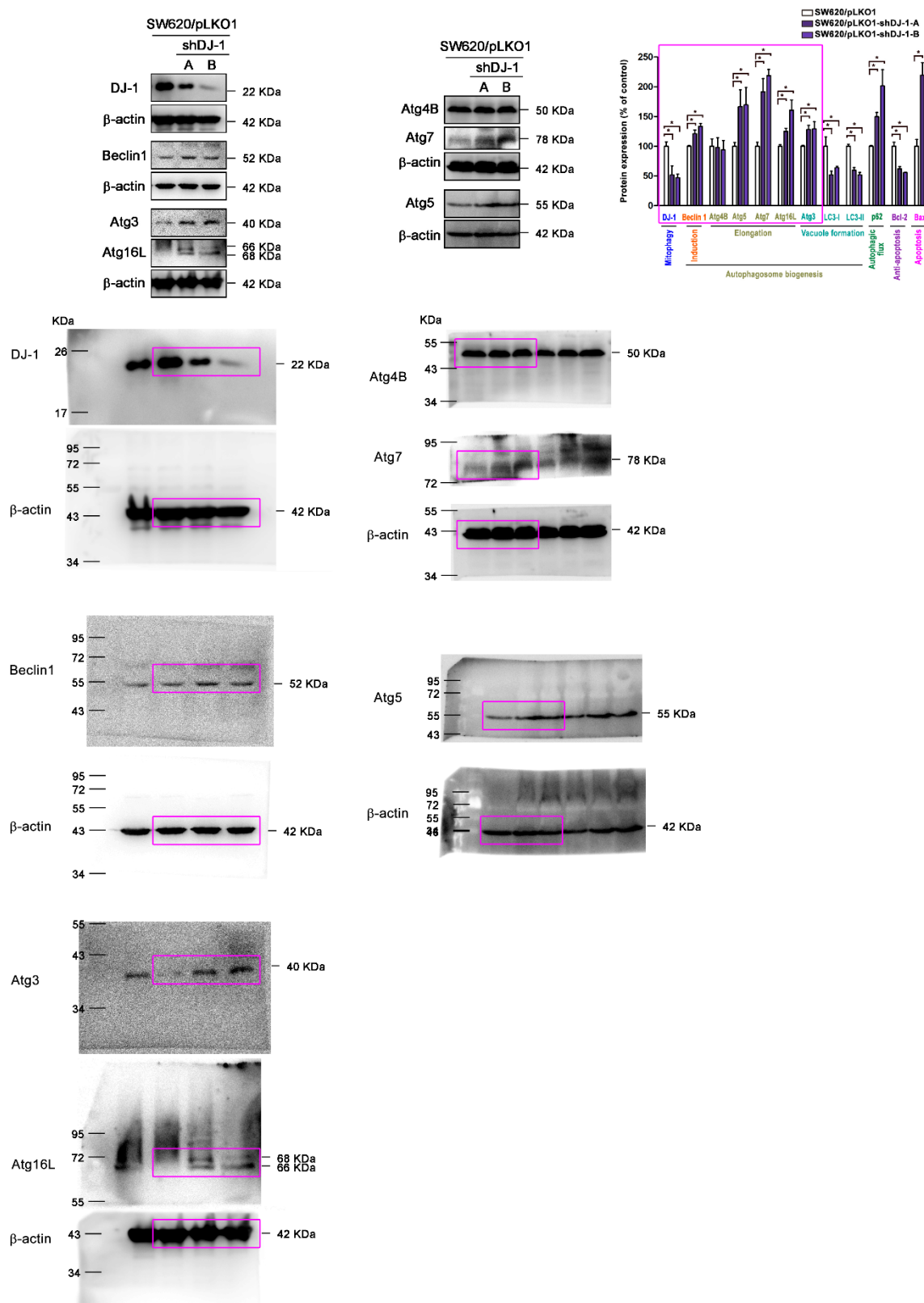


Figure S4. Uncropped Figure 5A. *The quantification data of each protein level with its function are shown here. Data are expressed as the means \pm S.E.M; the Student's *t*-test determined the *p*-value. *: *p* < 0.05 compared with control (SW620/pLKO1).

Figure 5B

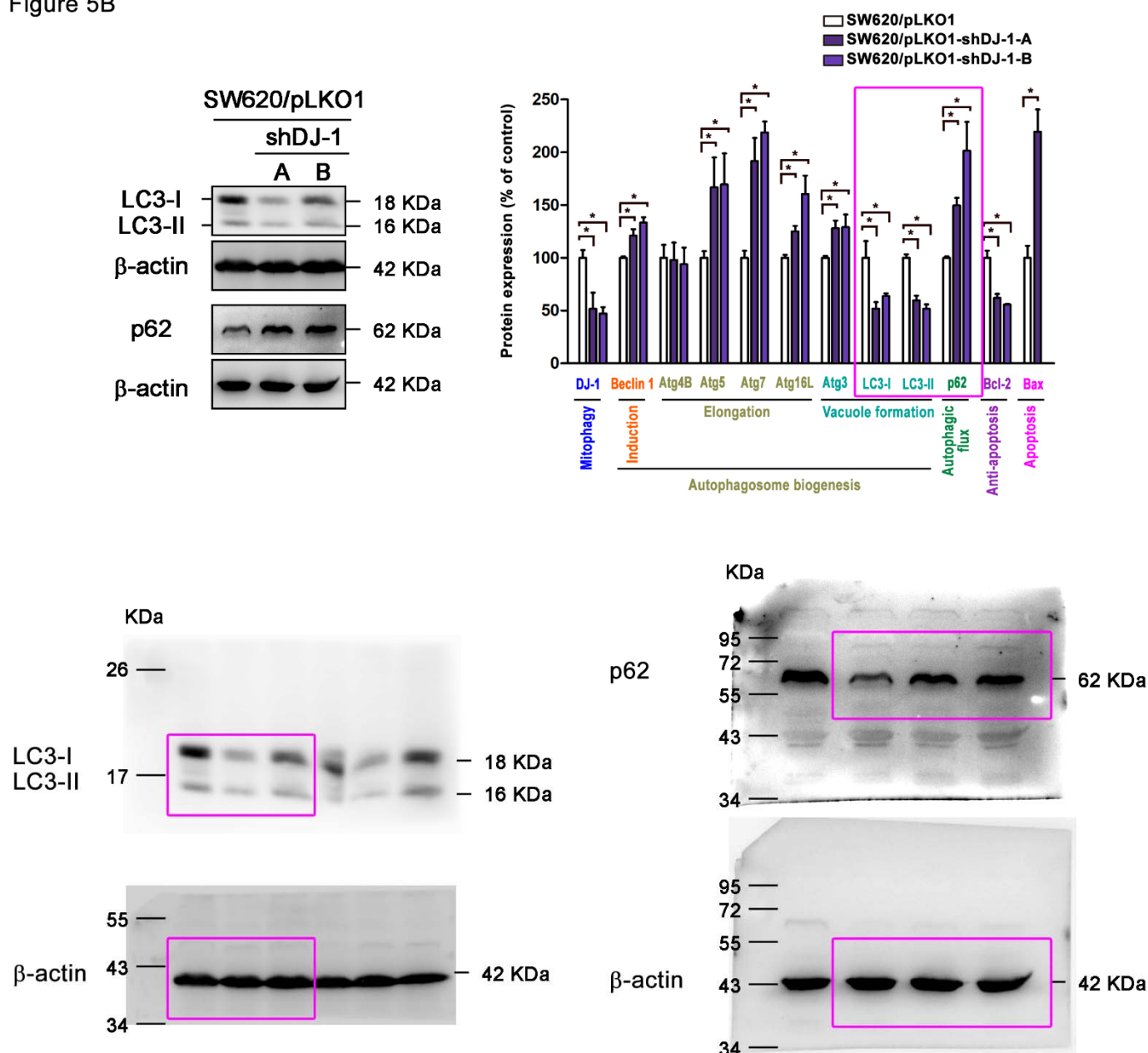


Figure S5. Uncropped Figure 5B. *The quantification data of each protein level with its function are shown here. Data are expressed as the means \pm S.E.M; the Student's *t*-test determined the *p*-value. *: *p* < 0.05 compared with control (SW620/pLKO1).

Figure 5C

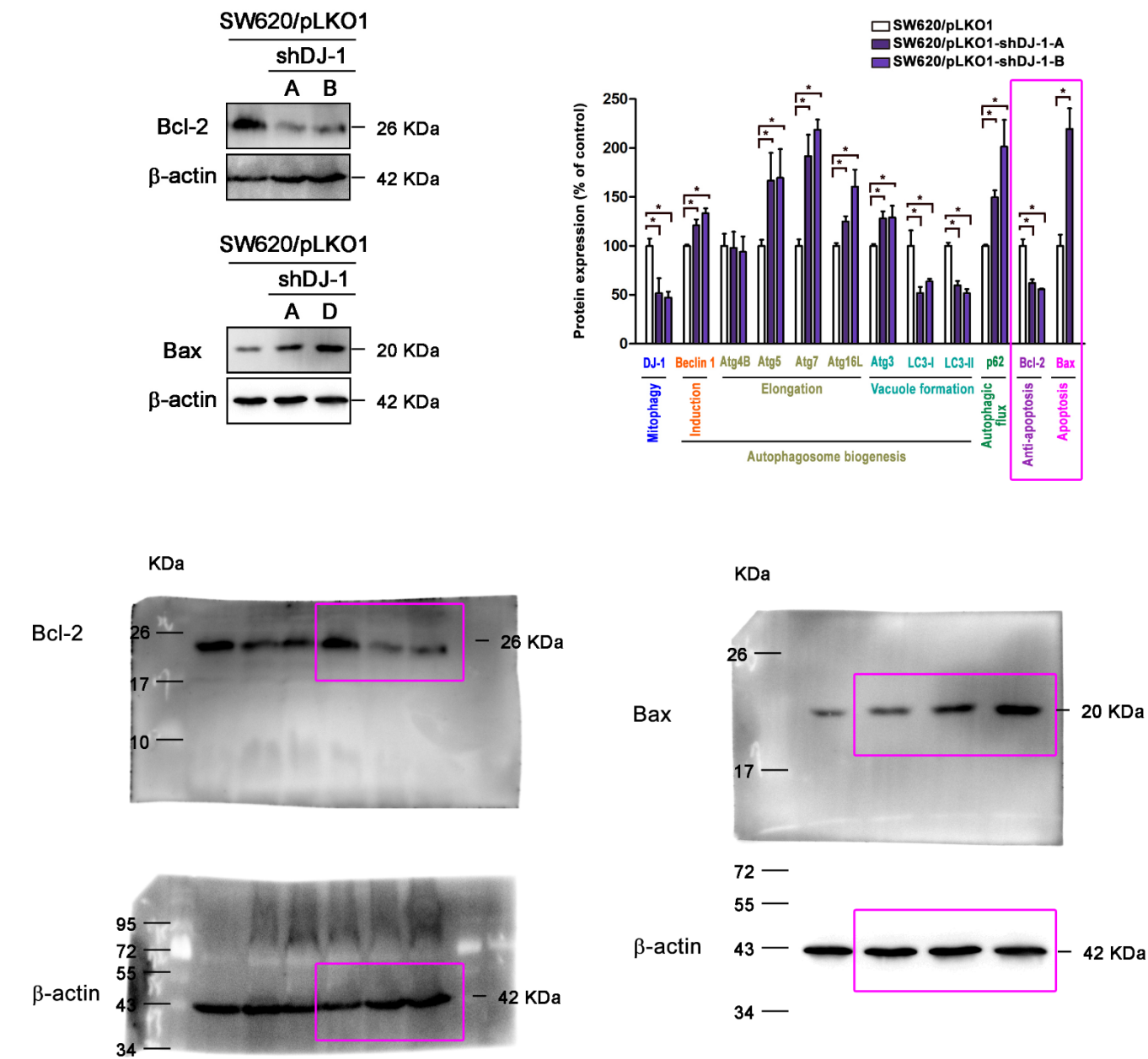


Figure S6. Uncropped Figure 5C. *The quantification data of each protein level with its function are shown here. Data are expressed as the means \pm S.E.M; the Student's *t*-test determined the p-value. *: $p < 0.05$ compared with control (SW620/pLKO1).