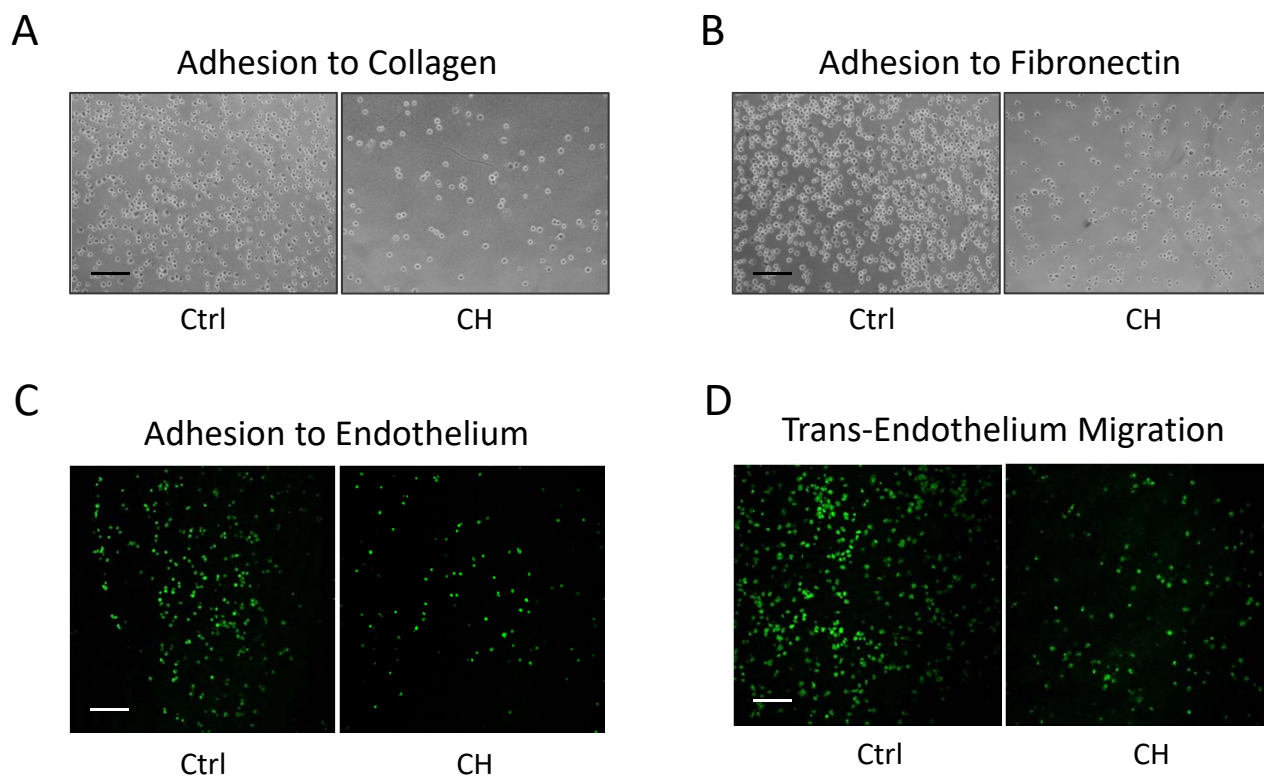


## Suppl. Fig.2



Supplementary Figure 2. (A) A375M6 melanoma cell adhesion to collagen substrate. A375M6 cells, treated for 24 h with 10  $\mu$ M CH, were let to adhere to culture plates previously coated with collagen for 10 min. Images are representative of five randomly chosen fields. Scale bar: 100 $\mu$ M. (B) A375M6 melanoma cell adhesion to fibronectin substrate. A375M6 cells, treated for 24 h with 10  $\mu$ M CH, were let to adhere to culture plates previously coated with fibronectin for 10 min. Images are representative of five randomly chosen fields. Scale bar: 100 $\mu$ M. (C) A375M6 melanoma cell adhesion to the endothelium. CFSE labeled A375M6 cells, treated with 10  $\mu$ M CH for 24 h, were let to adhere for 30 min onto a monolayer of HUVEC cells. The adherent cells were visualized using an inverted fluorescent microscope and representative images are reported. Scale bar: 100 $\mu$ M. (D) A375M6 melanoma cell trans-endothelial migration ability. CFSE labeled A375M6 cells, treated with 10  $\mu$ M CH for 24 h, were seeded onto a HUVEC monolayer in the upper compartment of a Boyden Chamber and let to migrate for 16 h toward complete medium (FBS 10%). Photos of fluorescent cells of five randomly chosen fields were acquired with inverted fluorescent microscope and representative images are reported. Scale bar: 100 $\mu$ M.