

Simultaneous Expression of Long Non-coding RNA *FAL1* and Extracellular Matrix Protein 1 Defines Tumour Behaviour in Young Patients with Papillary Thyroid Cancer

Seonhyang Jeong, Seul-Gi Lee, Hyunji Kim, Gibbeum Lee, Sunmi Park, In-Kyu Kim, Jandee Lee * and Young-Suk Jo *

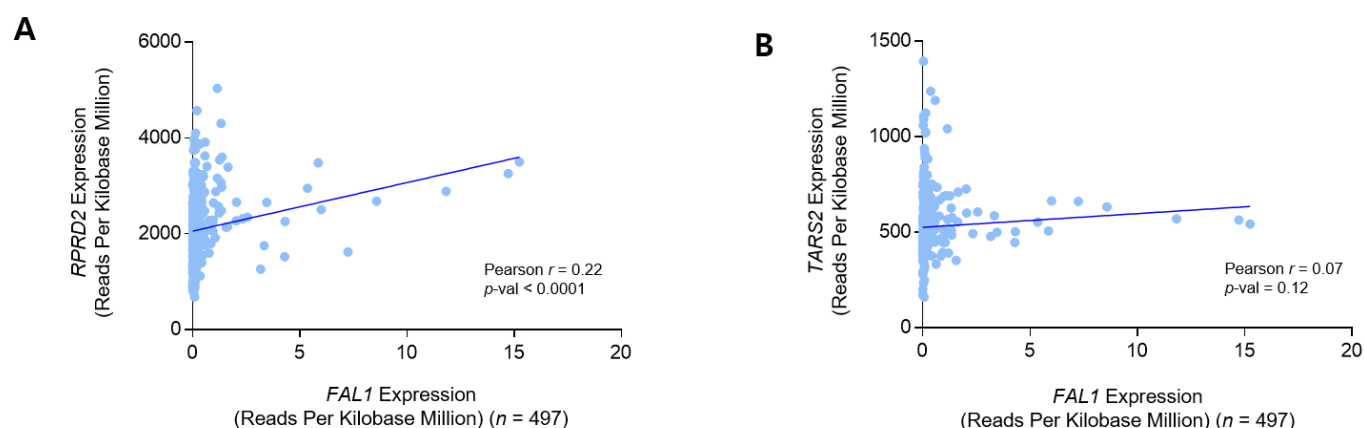


Figure S1. Correlation analysis of *FAL1* expression with *RPRD2* and *TARS2* expression in THCA. **(A)** Correlation of *FAL1* expression with *RPRD2* expression ($n = 497$). **(B)** Correlation of *FAL1* expression with *TARS2* expression ($n = 497$). Correlation analysis was performed using Pearson's correlation coefficient.

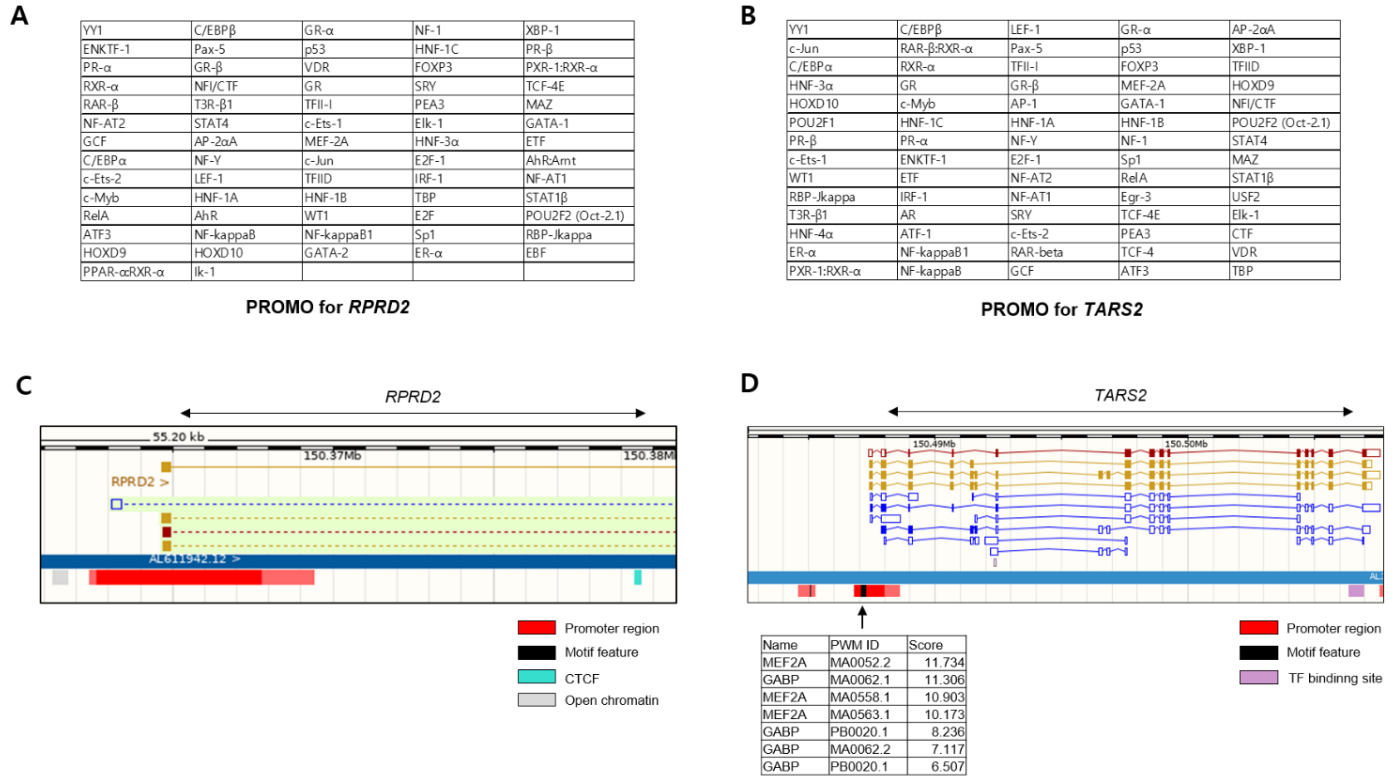


Figure S2. Confirmation of transcription factor binding site of *RPRD2* and *TARS2* promoters. (A) Results of PROMO analysis that predicted TFBS from the DNA sequence of *RPRD2* gene. (B) Results of PROMO analysis that predicted TFBS from the DNA sequence of *TARS2* gene. (C) Results of analysis of the TFBS of *RPRD2* gene using ENCODE. (D) Results of analysis of the TFBS of *TARS2* gene using ENCODE.

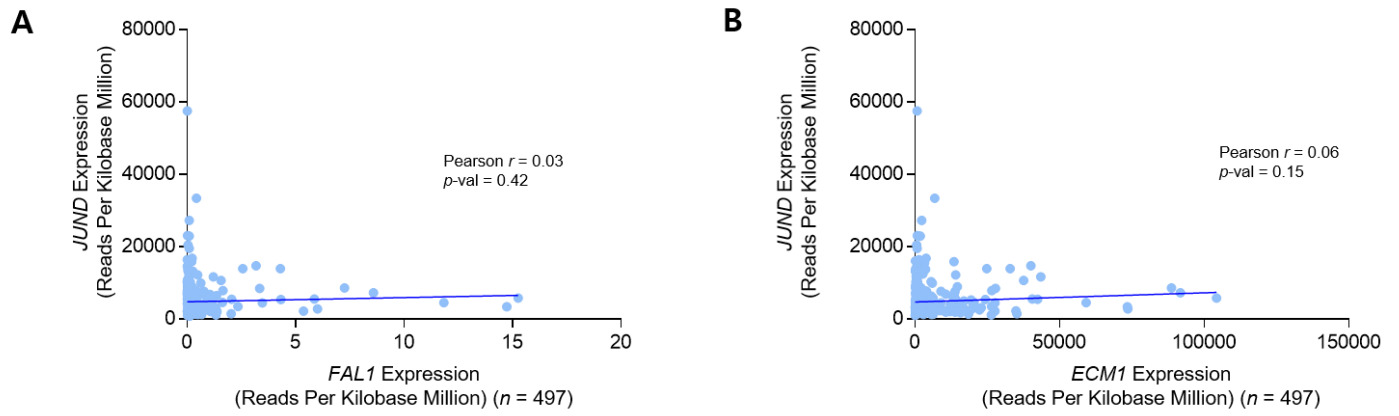


Figure S3. Correlation analysis of *JUND* expression with *FAL1*, *ECM1* expression in THCA. (A) Correlation of *JUND* expression with *FAL1* expression ($n = 497$). (B) Correlation of *JUND* expression with *ECM1* expression ($n = 497$). Correlation analysis was performed using Pearson's correlation coefficient.

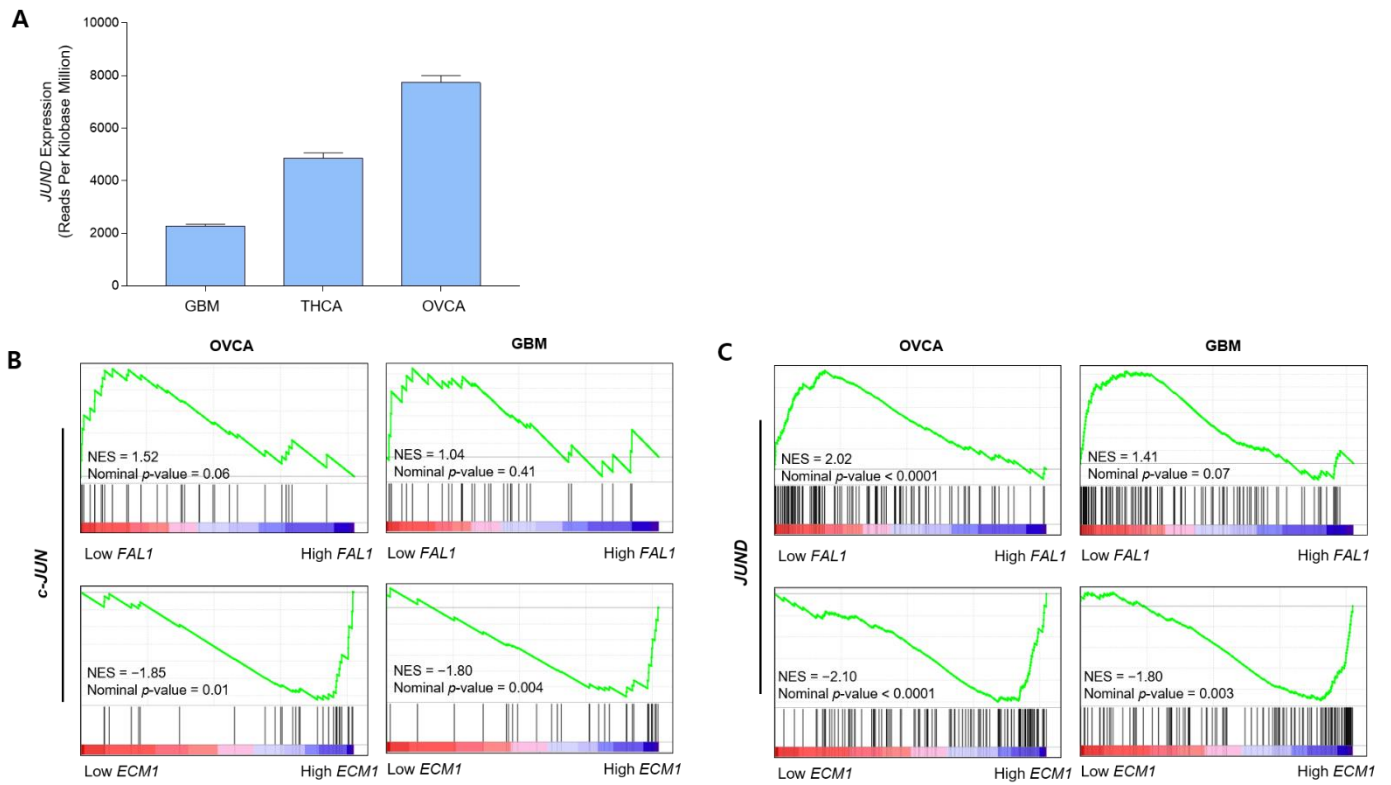


Figure S4. *JUND* expression and transcriptional target gene expression in GBM and OVCA. **A.** *JUND* expression status in GBM, THCA, and OVCA. **B.** Transcriptional target gene expression of *c-JUN* according to *ECM1* and *FAL1* expression patterns in GBM and OVCA. **C.** Transcriptional target gene expression of *JUND* according to *ECM1* and *FAL1* expression patterns in GBM and OVCA. Data are presented as mean \pm S.D. Abbreviations: GBM Glioblastoma, OVCA ovarian cancer.

Table S1. Comparison of 1q arm-level amplification in TCGA THCA according to *FAL1* expression status.

1q arm-level amplification	<i>FAL1</i> Expression		<i>p</i> value
	Low (<i>n</i> = 124, %)	High (<i>n</i> = 122, %)	
Absent	109 (87.9)	96 (78.7)	0.053
Present	15 (12.1)	26 (21.3)	