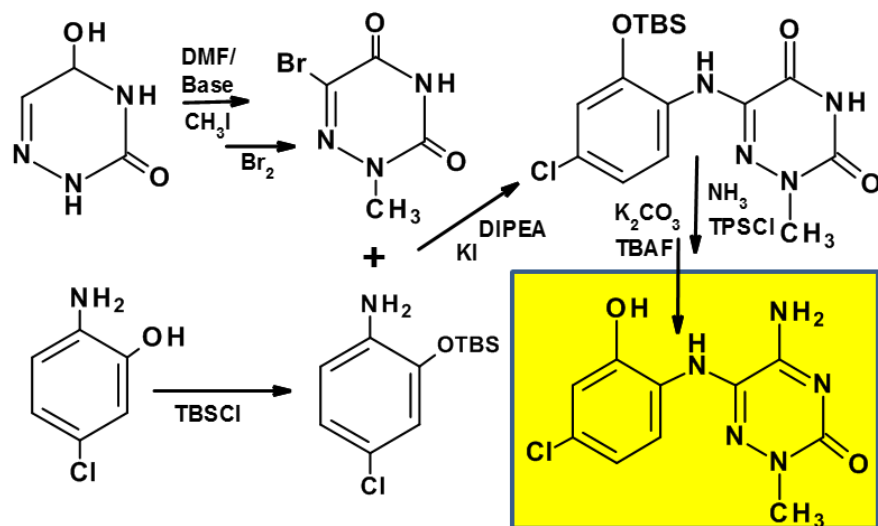


Figure S1: Stimulation of invasion of MDA-MB-468 cells by PRL and lack of responsiveness to PRL in cells with inactivated PRLR (PRLR^{-/-}). Cells plated in Boyden chambers with porous membranes were treated with SFM (10% serum free medium), FBS (10% fetal bovine serum), or PRL (1nM). After 24 hrs, invading cells on the membrane underside were counted under the microscope. Values are means \pm SEM (n= 3). * significant (p<0.05) vs SFM; ** significant vs PRL.

SMI-1



SMI-6

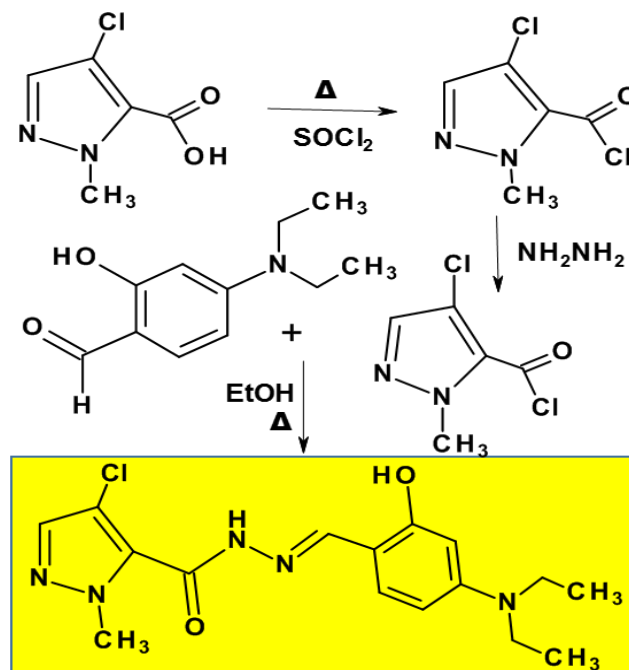


Figure S2: Steps in the biosynthesis of SMI-1 and SMI-6

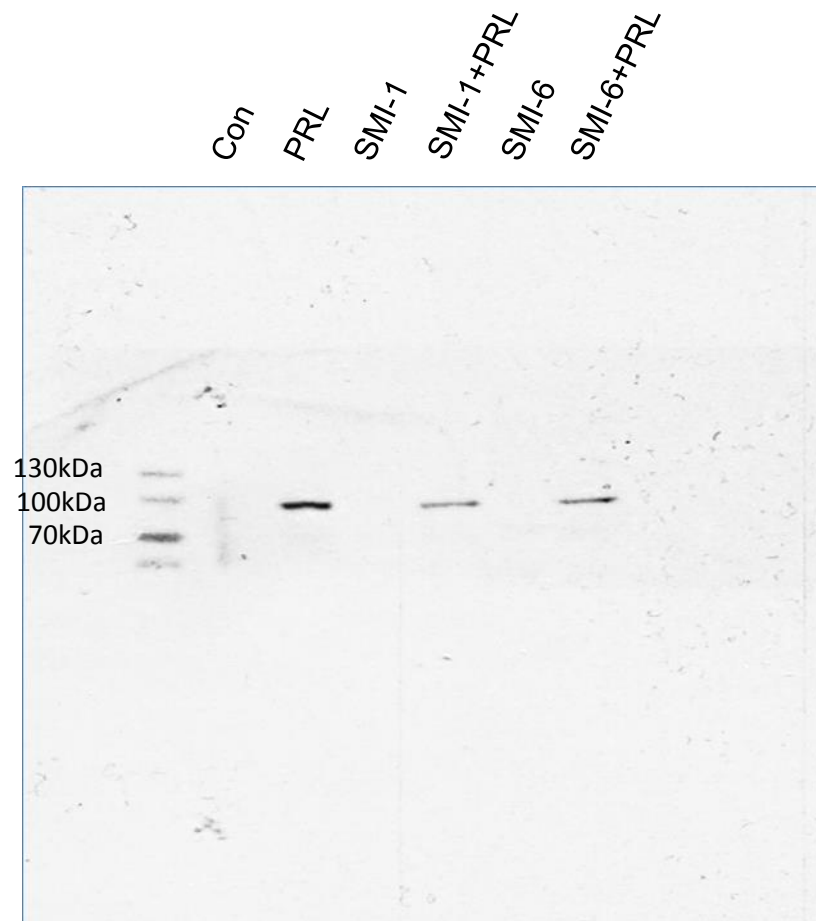


Figure S3: Full blot Phospho-Jak2

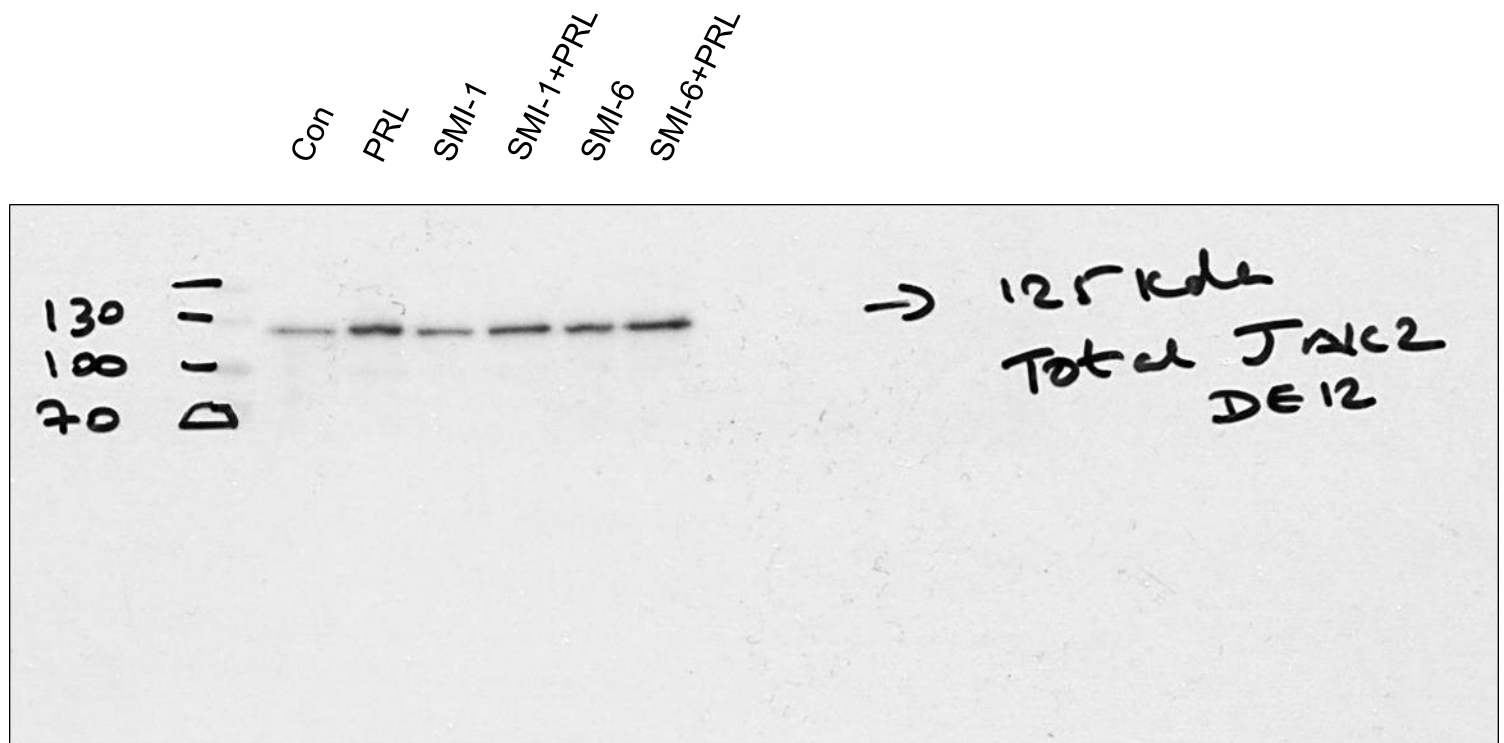


Figure S4: full blot Total Jak2