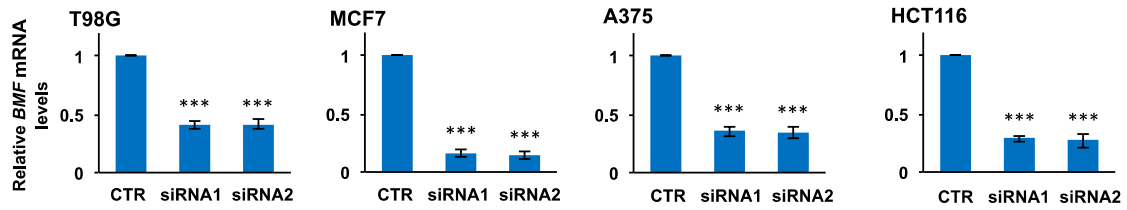


## Supplementary Fig S7



Supplementary Figure S7. **Knockdown of *BMF* by BMF-siRNA1 and BMF-siRNA2 in multiple cancer cell lines.** Replicate cultures were treated with siControl, BMF-siRNA1 and BMF-siRNA2 for 2 days and assessed by qPCR for relative levels of *BMF* transcripts. p values are indicated as described in Figure 1.