

# Supplementary Figures

## Personalized assessment of normal tissue radiosensitivity via transcriptome response to photon, proton and carbon irradiation in patient derived human intestinal organoids

Ali Nowrouzi<sup>1,2,3,4\*</sup>, Mathieu G. Sertorio<sup>6</sup>, Mahdi Akbarpour<sup>1,2,3,4</sup>, Maximilian Knoll<sup>1,2,3,4</sup>, Damir Kronic<sup>5</sup>, Matthew Kuhar<sup>7</sup>, Christian Schwager<sup>1,2,3,4</sup>, Stephan Brons<sup>3</sup>, Jürgen Debus<sup>1,2,3,4</sup>, Susanne I. Wells<sup>6</sup>, James M. Wells<sup>7,8,9</sup> and Amir Abdollahi<sup>1,2,3,4</sup>

<sup>1</sup> Heidelberg Ion-Beam Therapy Center (HIT), Department of Radiation Oncology, Heidelberg University Hospital (UKHD), Heidelberg, Germany

<sup>2</sup> German Cancer Consortium (DKTK) Core Center, Clinical Cooperation Units (CCU) Translational Radiation Oncology and Radiation Oncology, National Center for Tumor Diseases (NCT), German Cancer Research Center (DKFZ), Heidelberg, Germany

<sup>3</sup> Heidelberg Institute of Radiation Oncology (HIRO), National Center for Radiation Research in Oncology (NCRO), German Cancer Research Center (DKFZ) and Heidelberg University Hospital (UKHD), Heidelberg, Germany

<sup>4</sup> Division of Molecular and Translational Radiation Oncology, Heidelberg Medical Faculty (HDMF), Heidelberg University, Heidelberg, Germany

<sup>5</sup> Light Microscopy Facility, German Cancer Research Center, Heidelberg 69120, Germany

<sup>6</sup> Cancer and Blood Diseases Institute, Cincinnati Children's Hospital Medical Center, Cincinnati, OH, USA

<sup>7</sup> Division of Developmental Biology, Cincinnati Children's Hospital Medical Center, Cincinnati, Ohio, USA

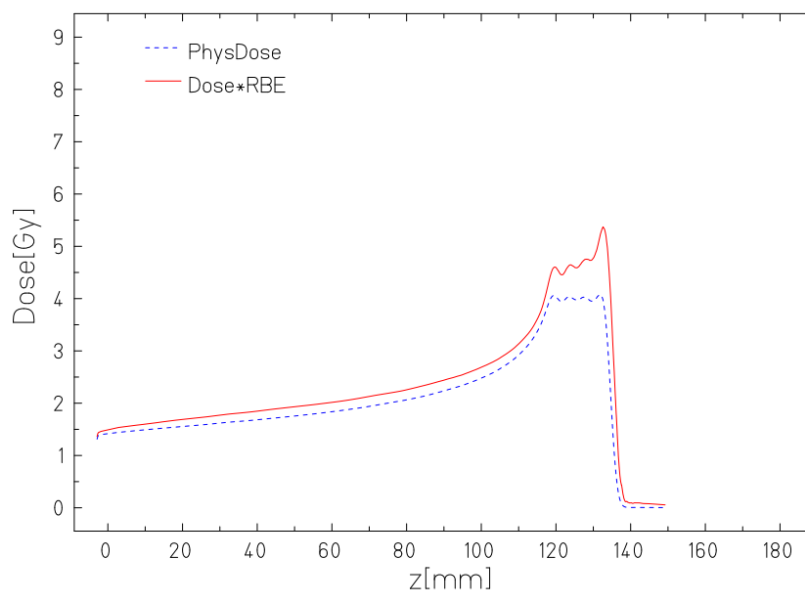
<sup>8</sup> Division of Endocrinology, Cincinnati Children's Hospital Medical Center, Cincinnati, Ohio, USA

<sup>9</sup> Center for Stem Cell and Organoid Medicine, Cincinnati Children's Hospital Medical Center, Cincinnati, Ohio, USA

\* Correspondence: [a.nowrouzi@dkfz.de](mailto:a.nowrouzi@dkfz.de); Tel.: +49-6221-56-34638 (Heidelberg, Germany)

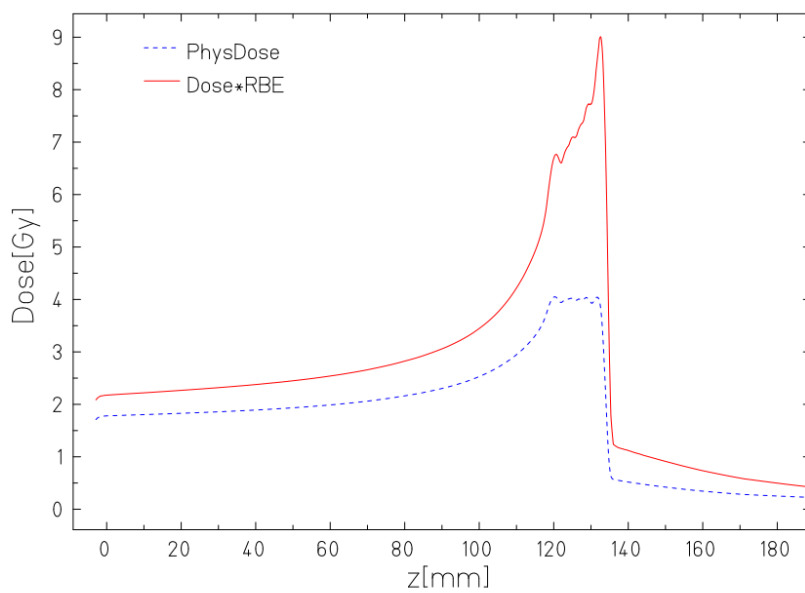
a.

Proton compared to Photon



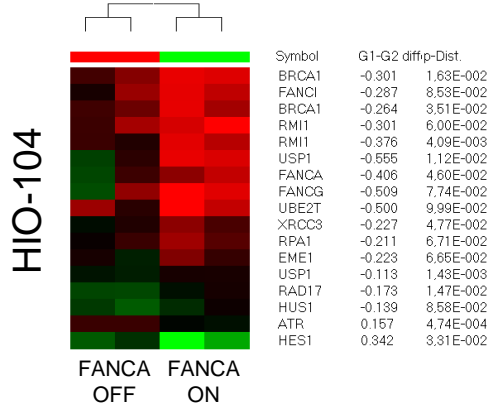
b.

Carbon compared to Photon

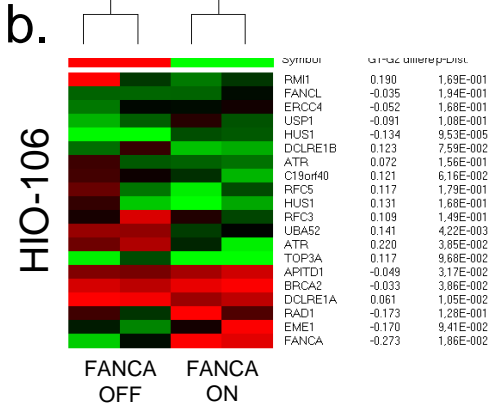


FigS 2

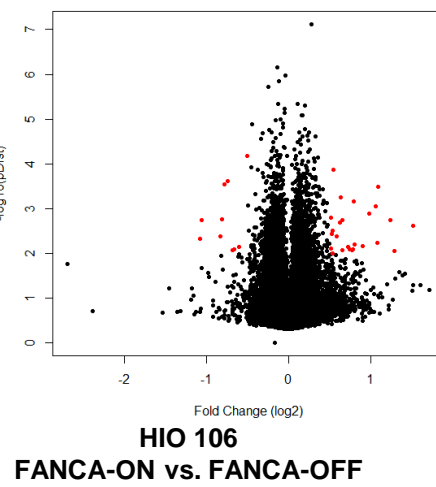
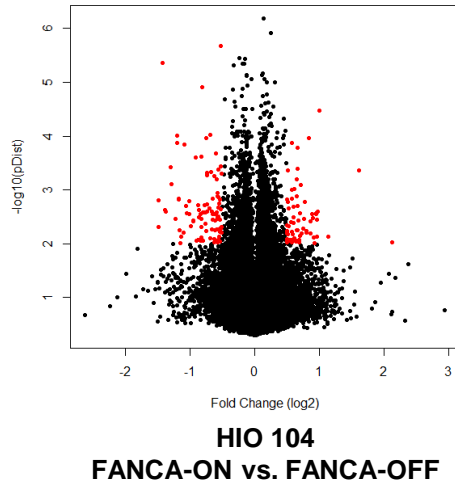
a.



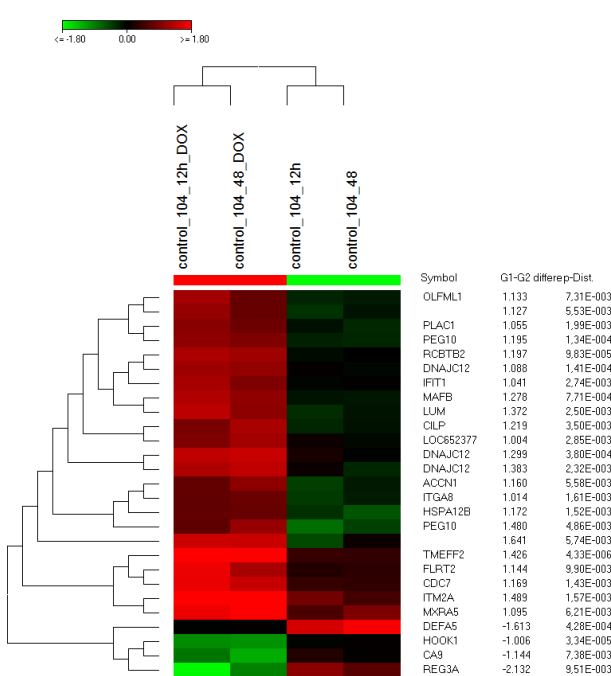
b.



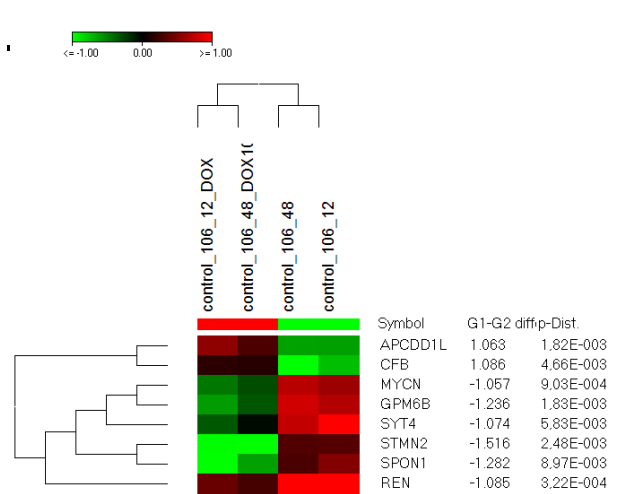
c.



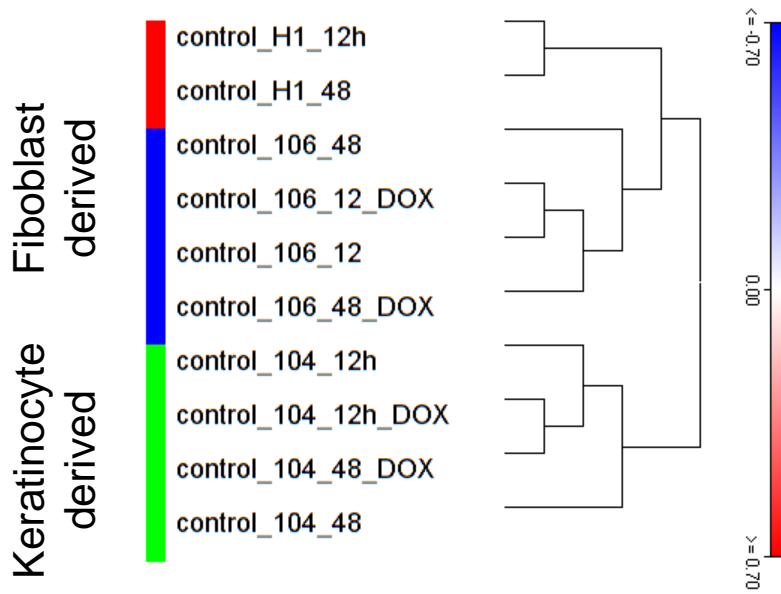
d.



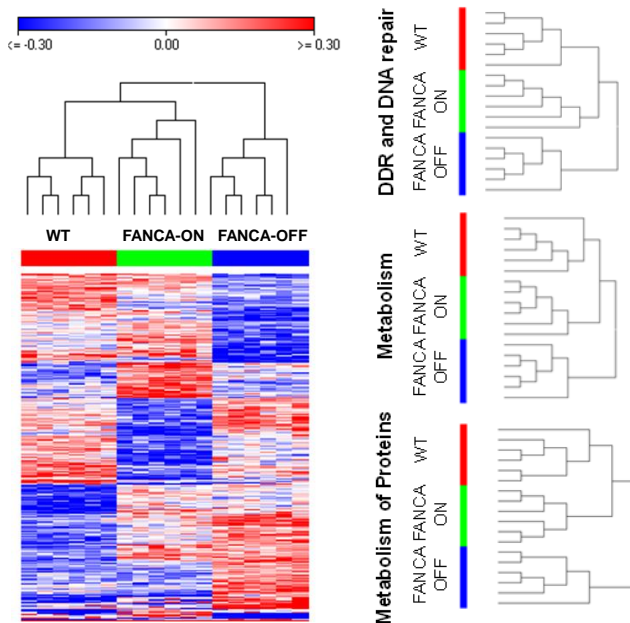
e.



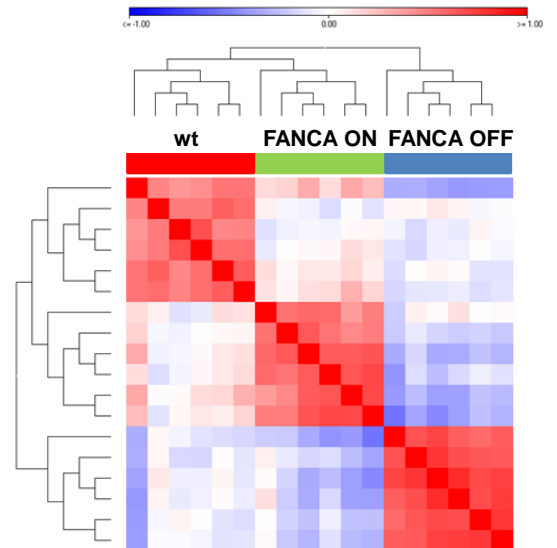
a.



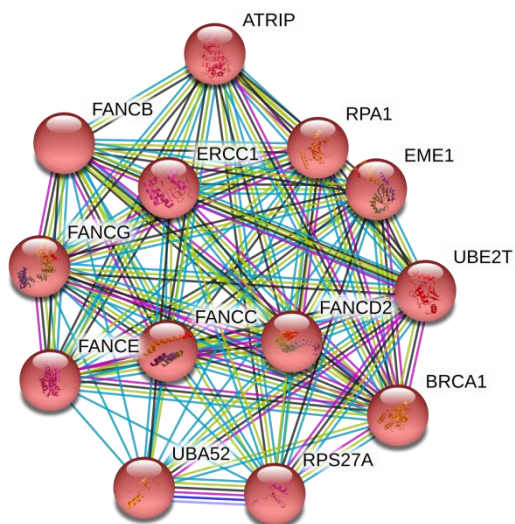
b.



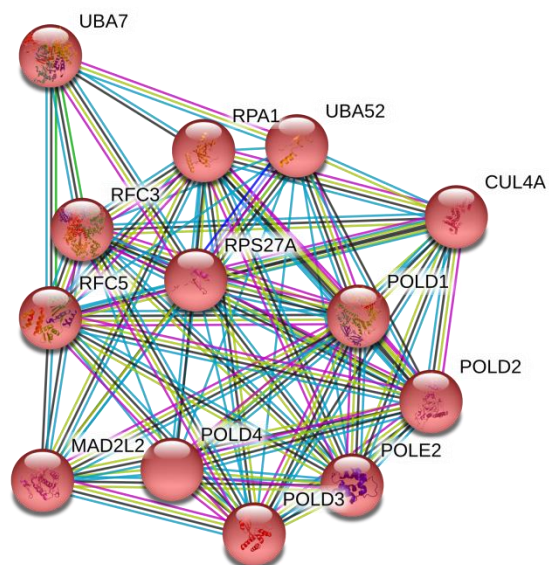
c.



**FigS 4**

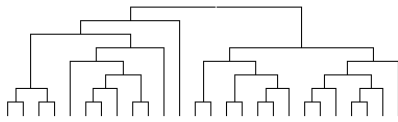


**Fanconi Anemia Pathway**

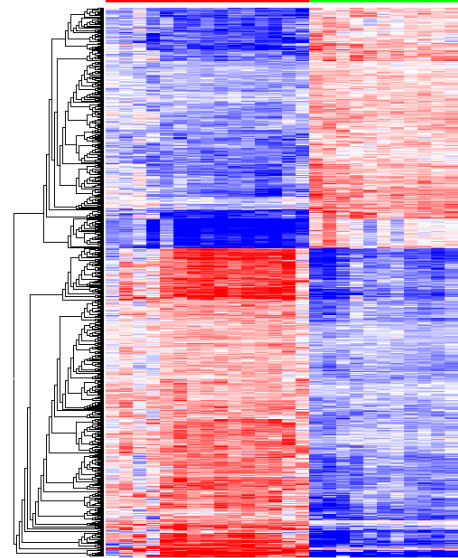
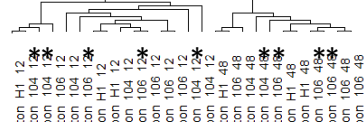


**Translesion Synthesis**

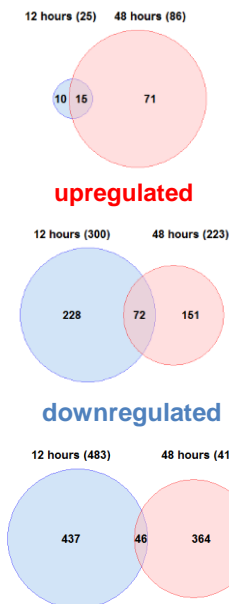
a.



b.

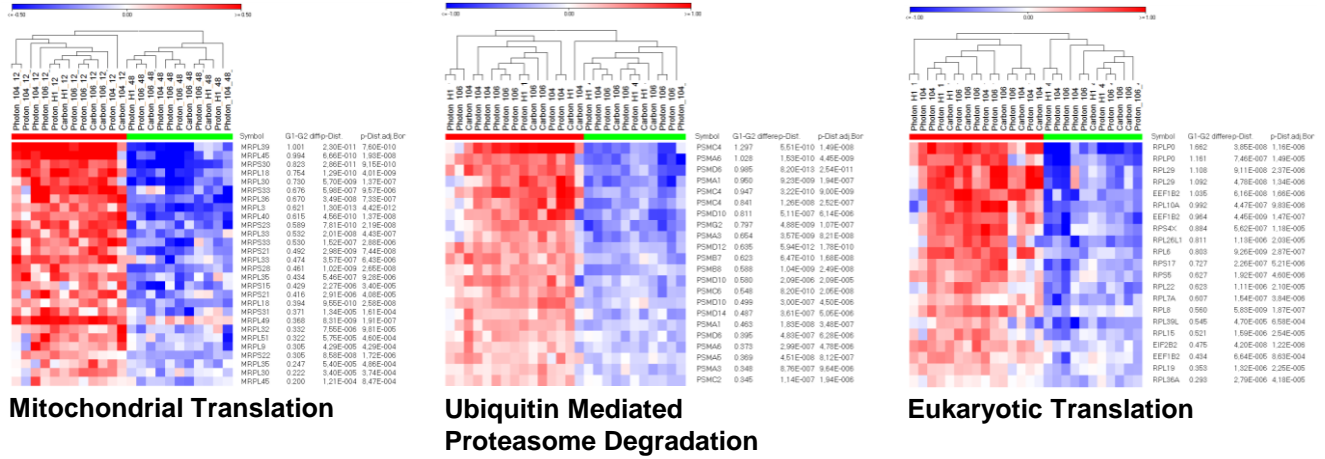


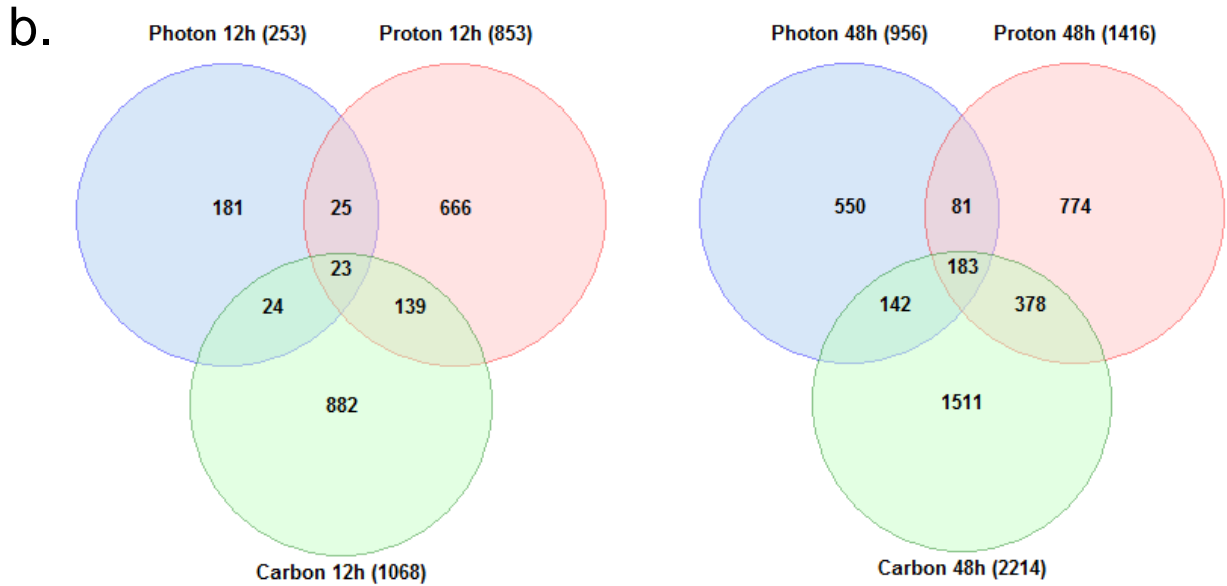
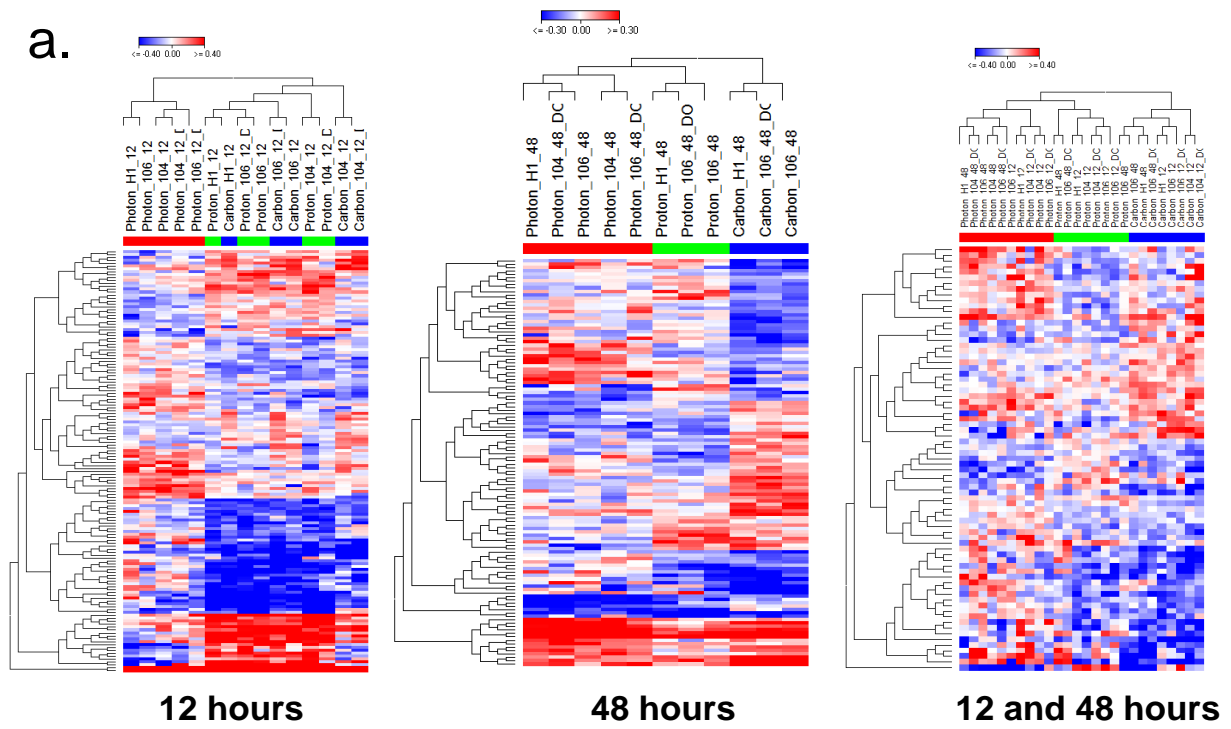
d.



12h

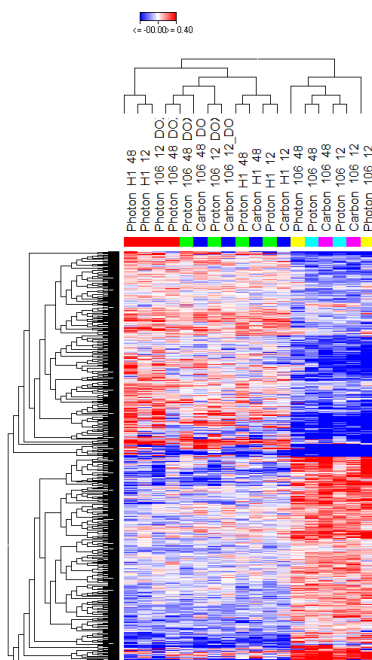
p value (log10)



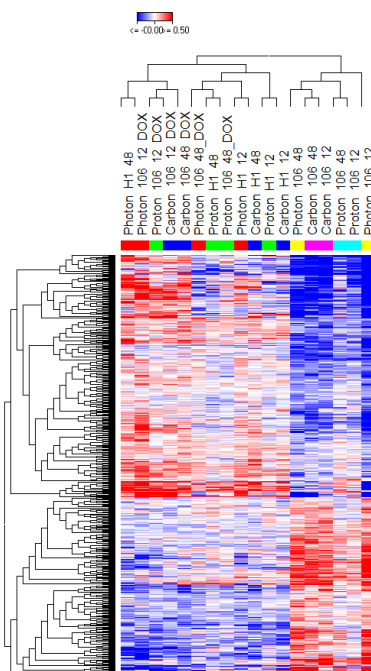




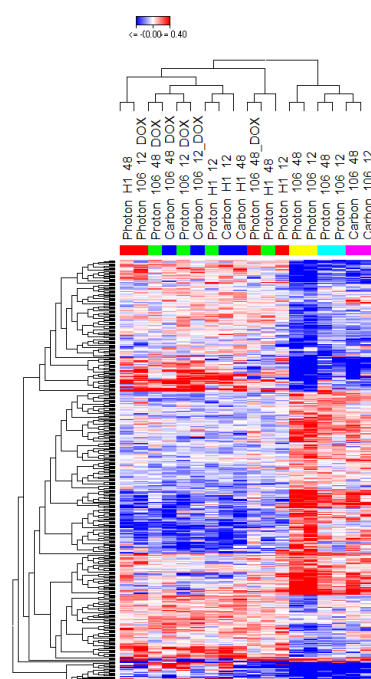
**FigS 8**



**FA**



**RQ**



**FA and RQ**