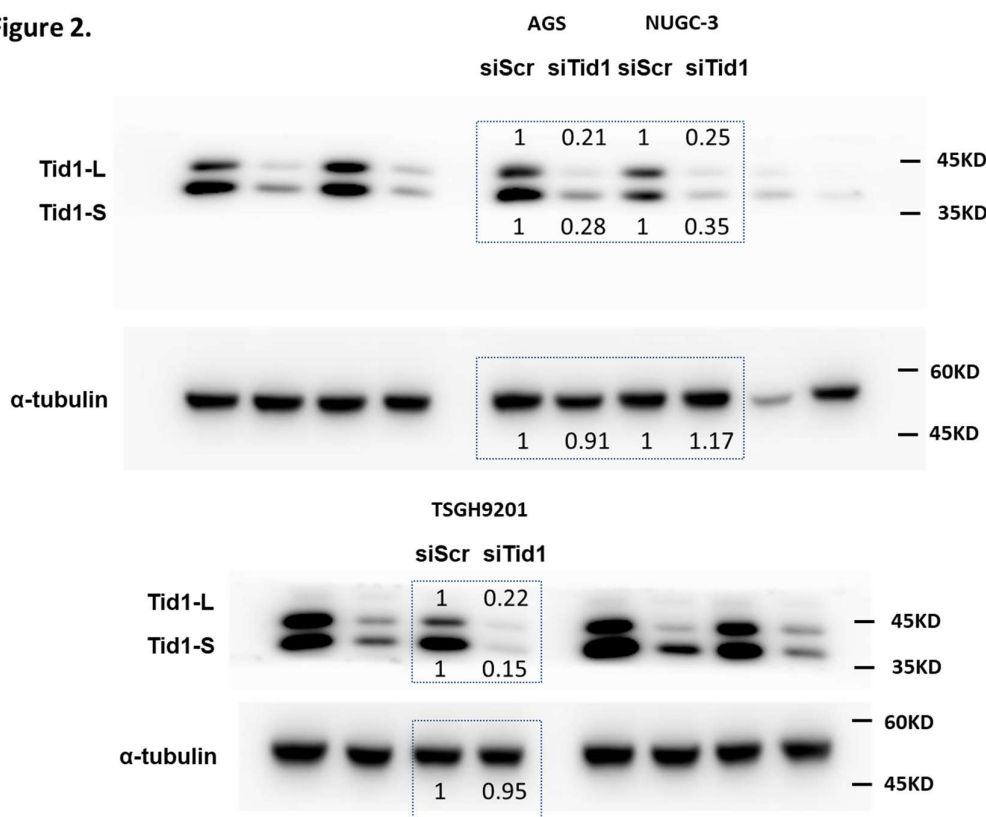


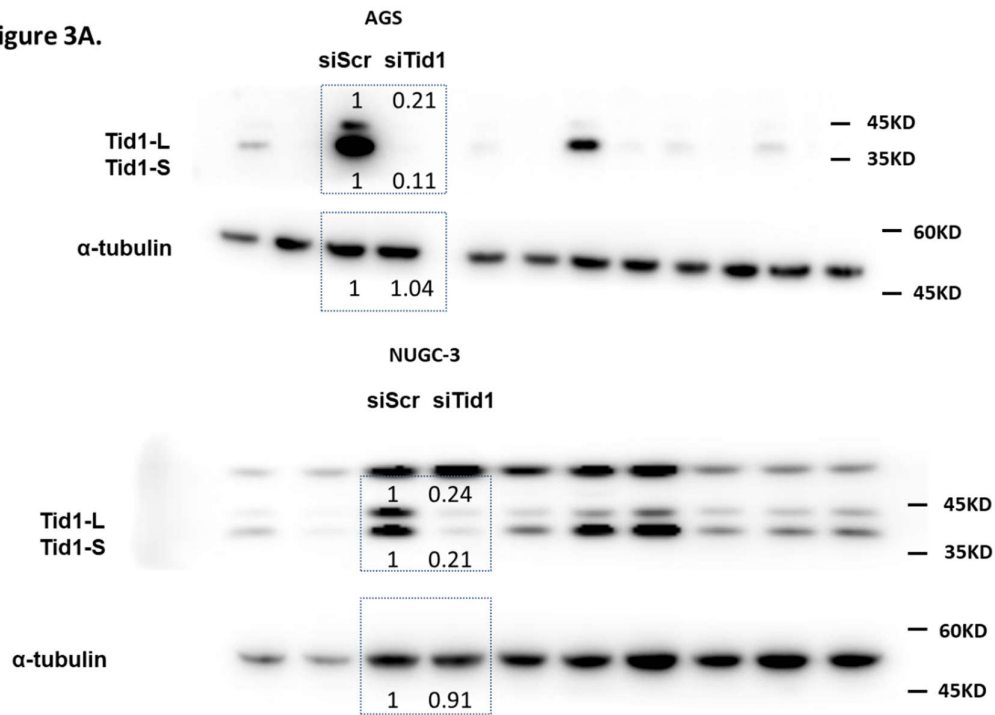
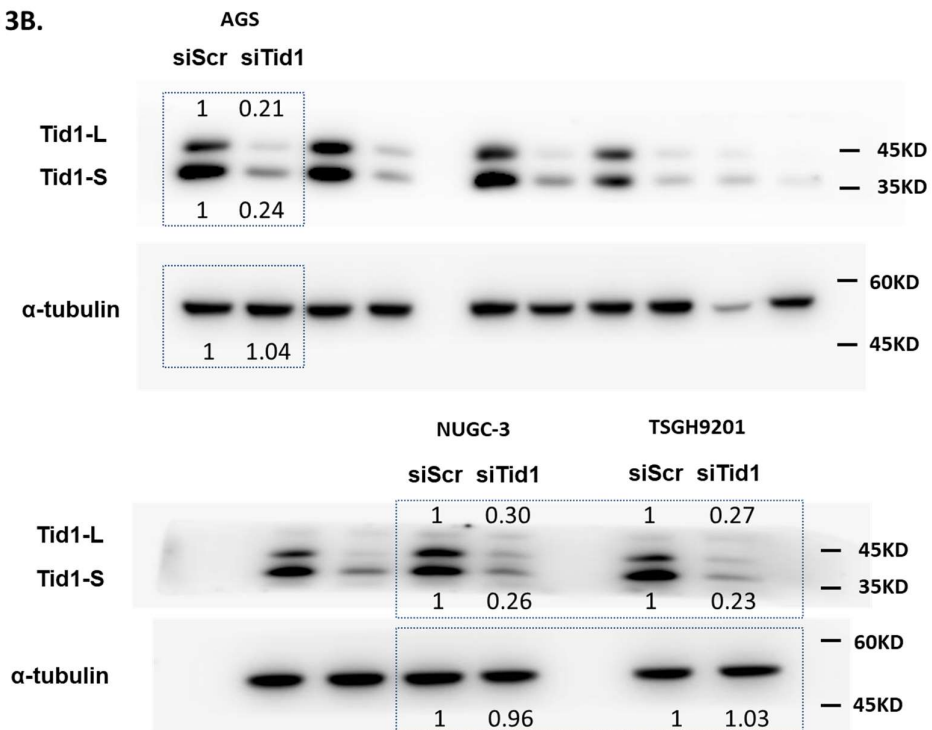
# Supplementary Materials: DNAJA3/Tid1 Is Required for Mitochondrial DNA Maintenance and Regulates Migration and Invasion of Human Gastric Cancer Cells

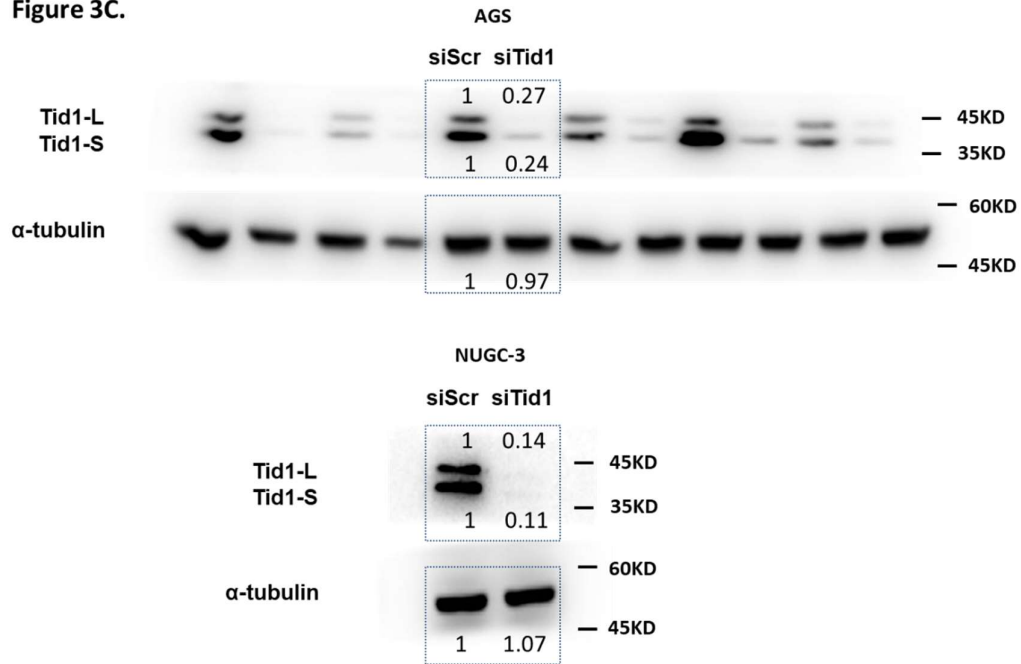
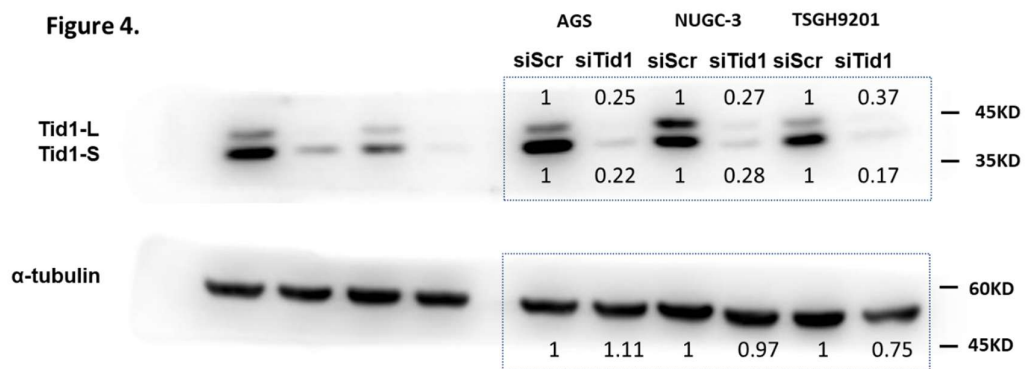
Sheng-Fan Wang, Kuo-Hung Huang, Wei-Chuan Tseng, Jeng-Fan Lo, Anna Fen-Yau Li, Wen-Liang Fang, Chian-Feng Chen, Tien-Shun Yeh, Yuh-Lih Chang, Yueh-Ching Chou, Hung-Hsu Hung and Hsin-Chen Lee

**Figure 2.**



**Figure S1.** Full blots corresponding to Figure 2.

**Figure 3A.****Figure S2.** Full blots corresponding to Figure 3A.**Figure 3B.****Figure S3.** Full blots corresponding to Figure 3B.

**Figure 3C.****Figure S4.** Full blots corresponding to Figure 3C.**Figure 4.****Figure S5.** Full blots corresponding to Figure 4.

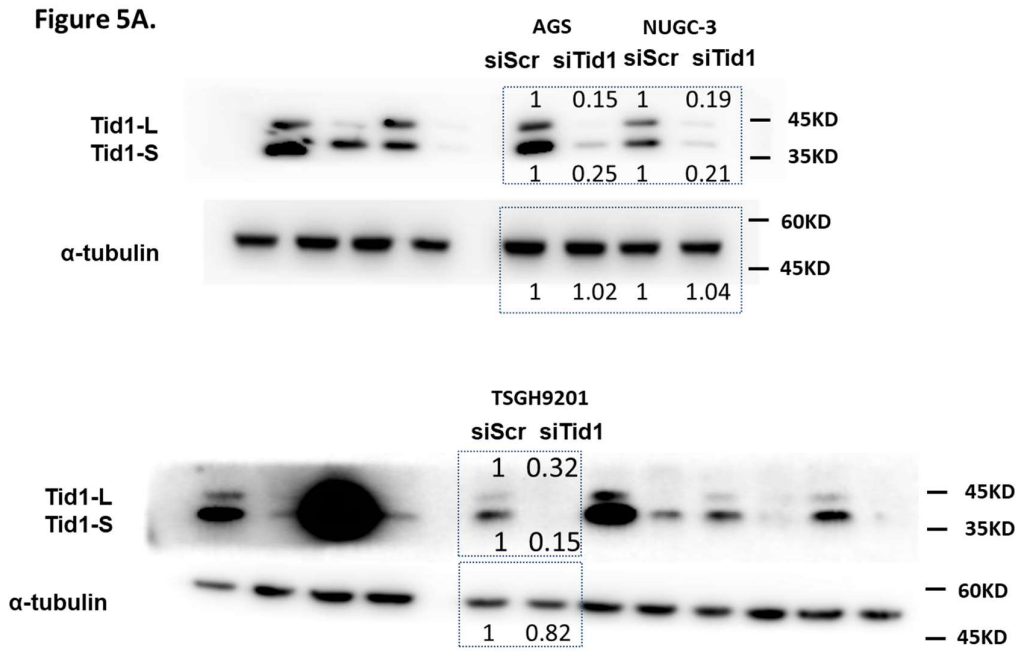


Figure S6. Full blots corresponding to Figure 5A.

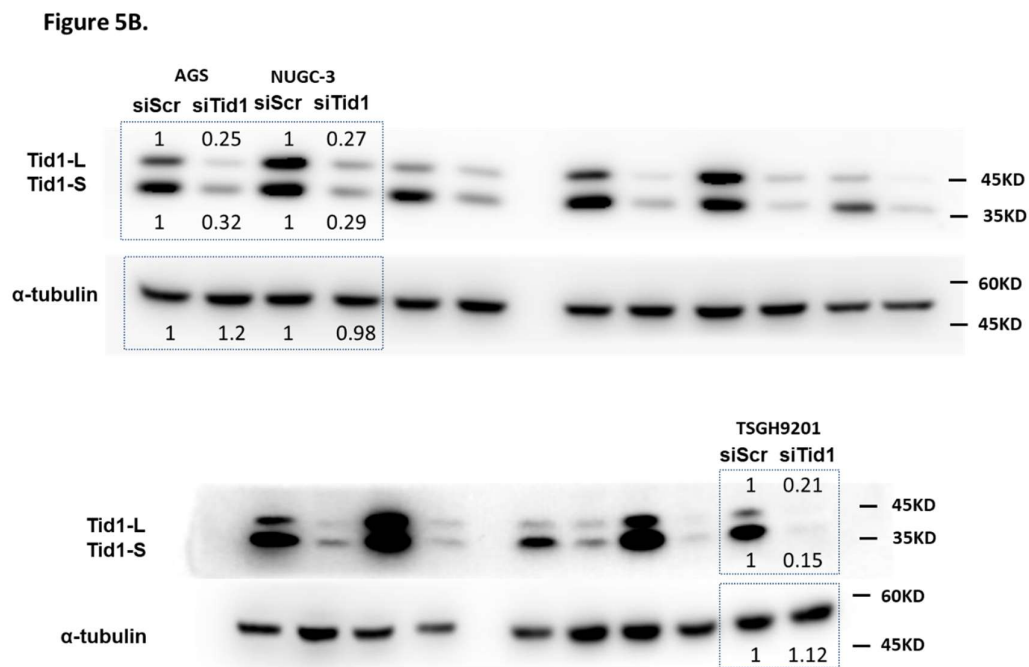
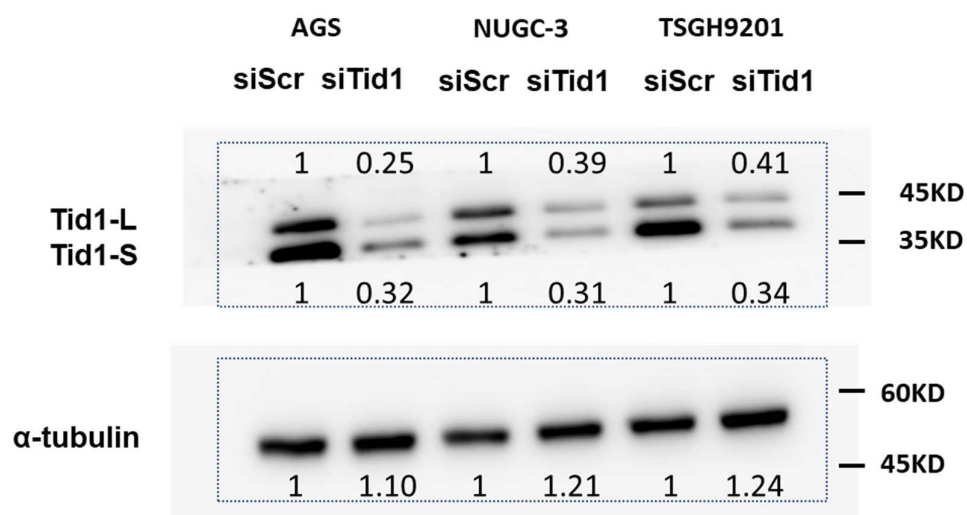
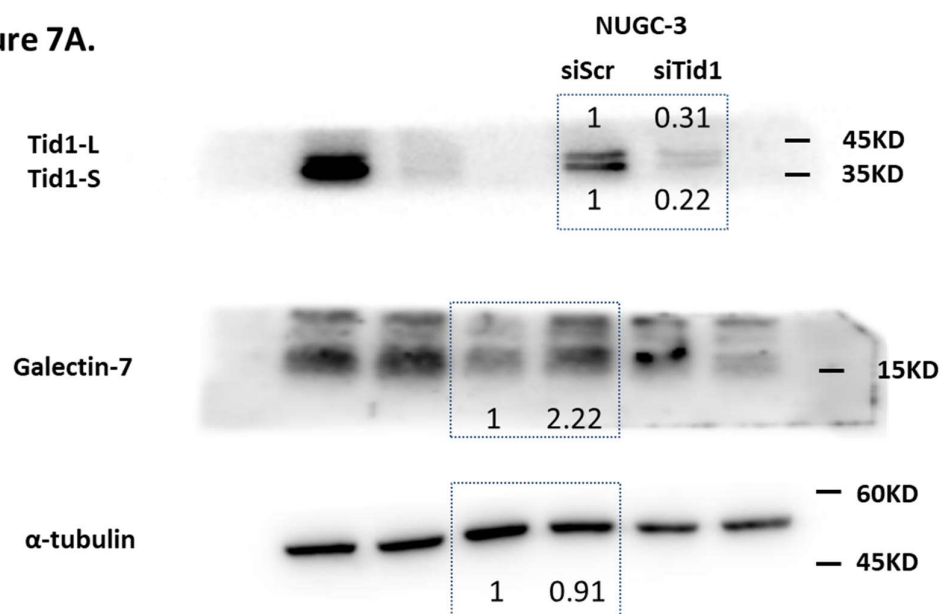


Figure S7. Full blots corresponding to Figure 5B.

**Figure 6.****Figure S8.** Full blots corresponding to Figure 6.**Figure 7A.****Figure S9.** Full blots corresponding to Figure 7A.

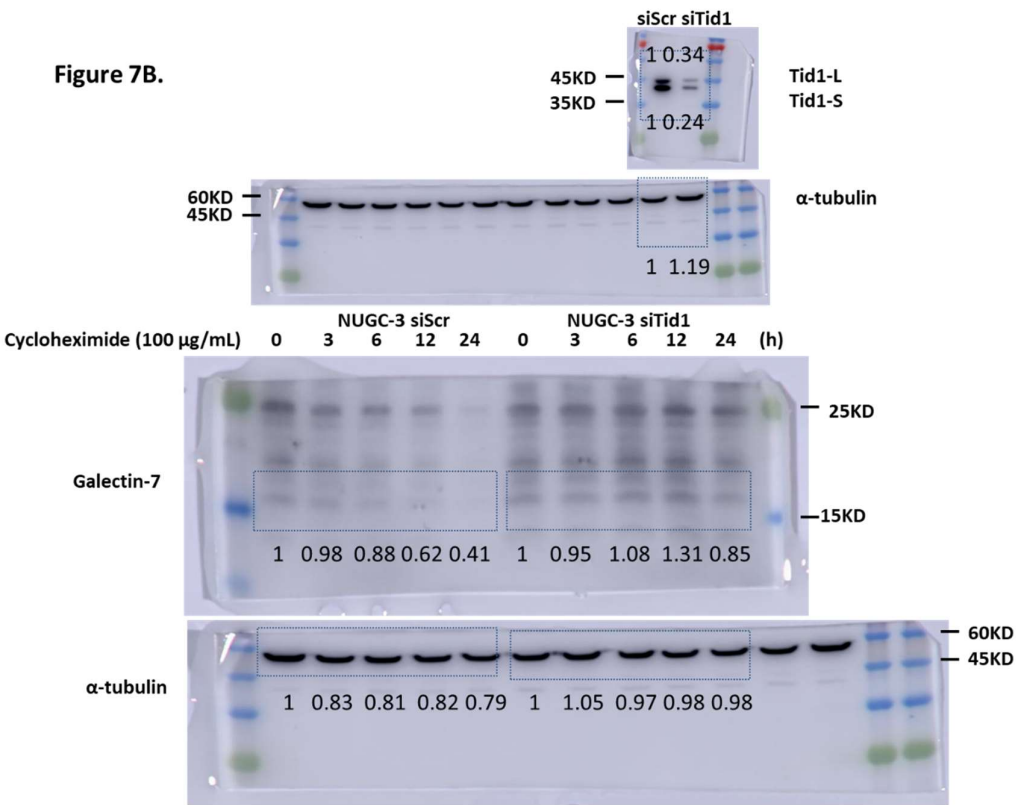


Figure S10. Full blots corresponding to Figure 7B.

**Figure 7C.**

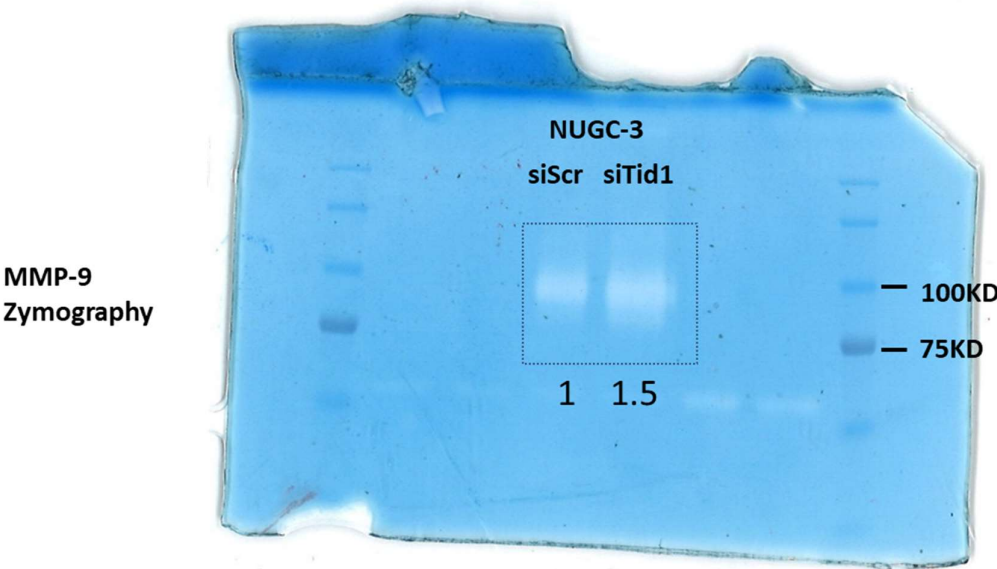


Figure S11. Full blots corresponding to Figure 7C.