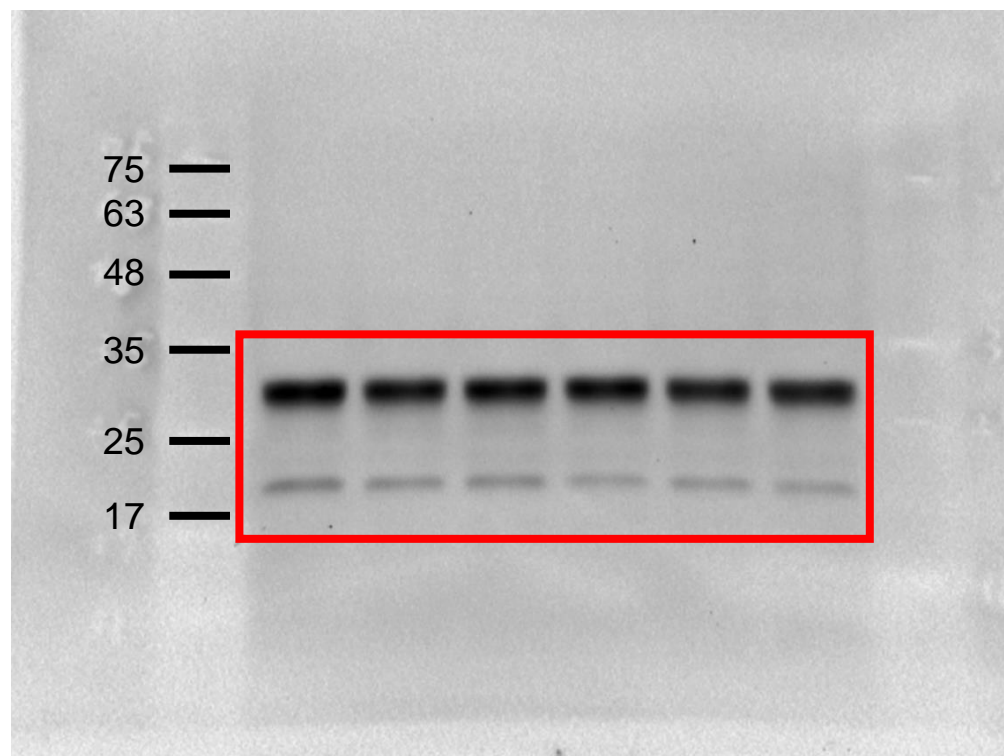


Fig. 3D Cis+Gem+PS_Caspase3, cleaved-caspase3

IB: anti-caspase 3
Time (48 h)

Cisplatin (4 μ M)	-	-	+	-	+	+
Gemcitabine (0.4 μ M)	-	-	-	+	+	+
Pterostilbene (30 μ M)	-	+	-	-	-	+



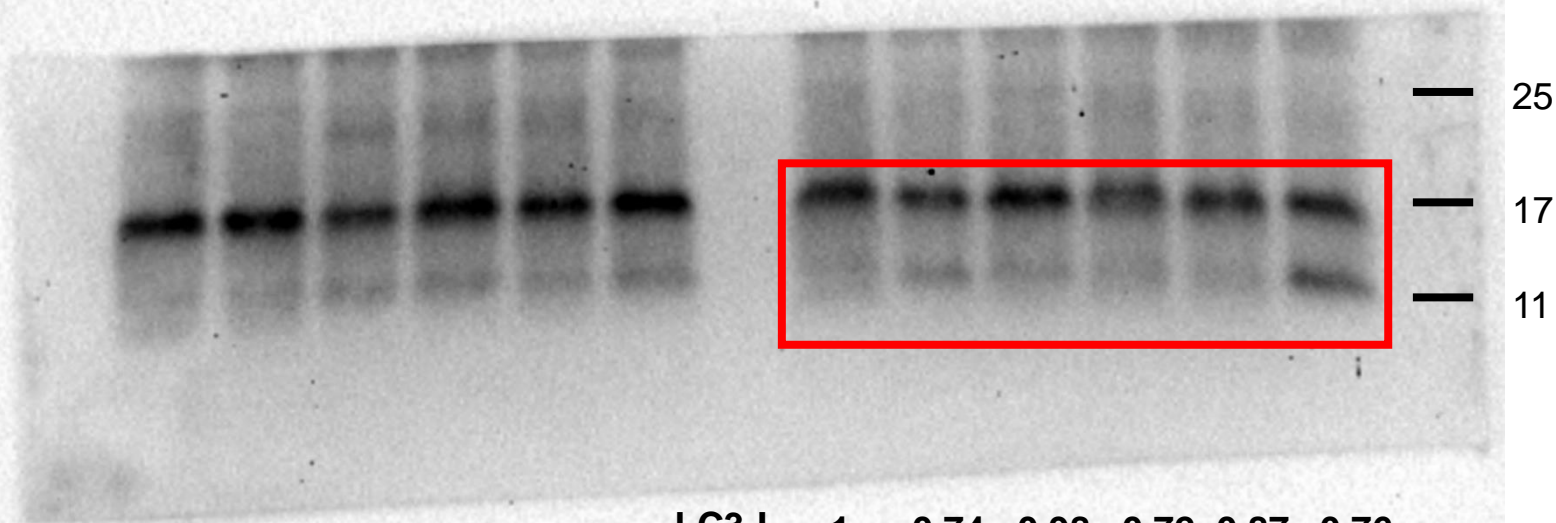
Cleaved-caspase 3 1 0.57 0.65 0.50 0.61 0.59

Fig. 3D Cis+Gem+PS_LC3-I, LC3-II

IB: anti-LC3B

Time (48 h)

Cisplatin (4 μ M)	-	-	+	-	+	+
Gemcitabine (0.4 μ M)	-	-	-	+	+	+
Pterostilbene (30 μ M)	-	+	-	-	-	+



LC3-I	1	0.74	0.98	0.72	0.87	0.76
LC3-II	1	1.28	1.62	1.21	1.45	1.79

Fig. 3D Cis+Gem+PS_beta actin

IB: anti- β actin

Time (48 h)

Cisplatin (4 μ M)	-	-	+	-	+	+
Gemcitabine (0.4 μ M)	-	-	-	+	+	+
Pterostilbene (30 μ M)	-	+	-	-	-	+

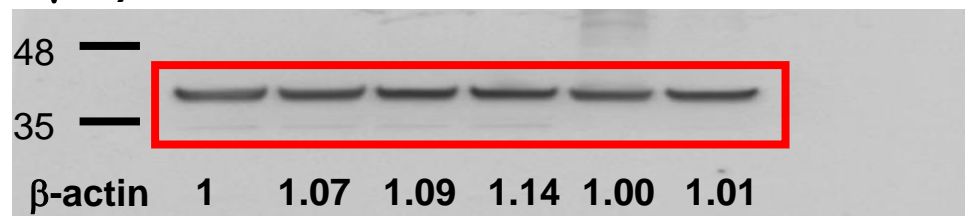


Fig. S5C Car+Gem+PS_Caspase3, cleaved-caspase3

IB: anti-caspase 3
Time (48 h)

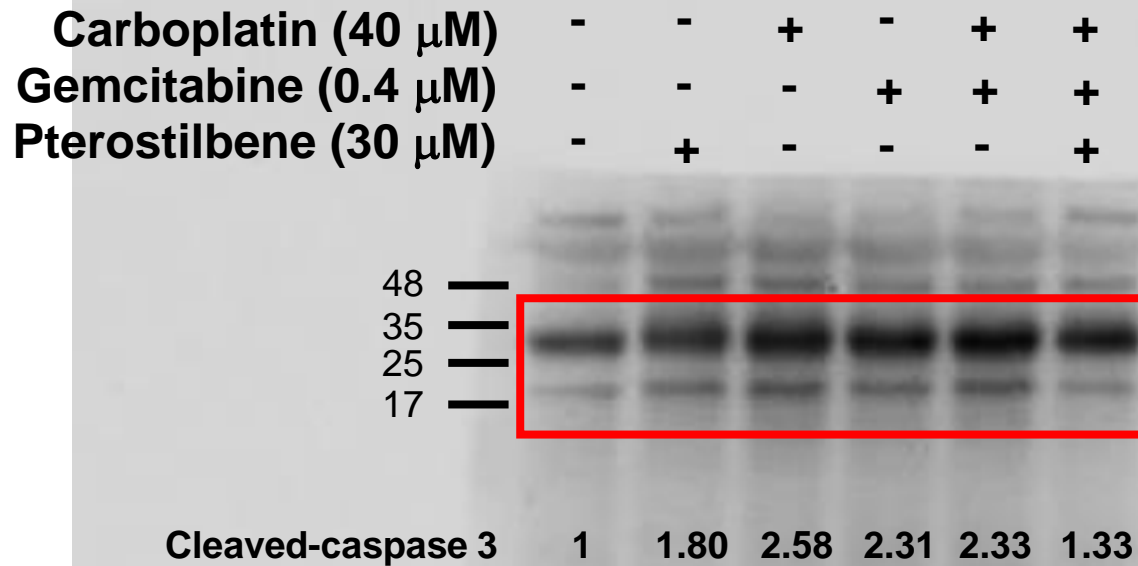
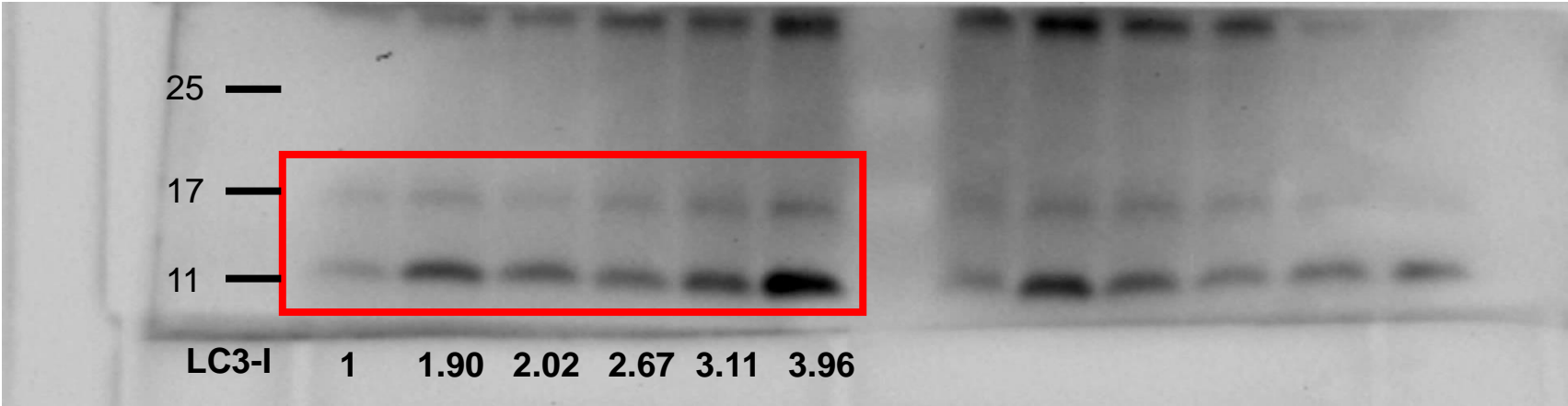


Fig. S5C Car+Gem+PS_LC3-I, LC3-II

IB: anti-LC3B

Time (48 h)

Carboplatin (40 μ M)	-	-	+	-	+	+
Gemcitabine (0.4 μ M)	-	-	-	+	+	+
Pterostilbene (30 μ M)	-	+	-	-	-	+



LC3-I	1	1.90	2.02	2.67	3.11	3.96
LC3-II	1	2.56	2.39	2.37	2.85	4.42

Fig. S5C Car+Gem+PS_beta actin

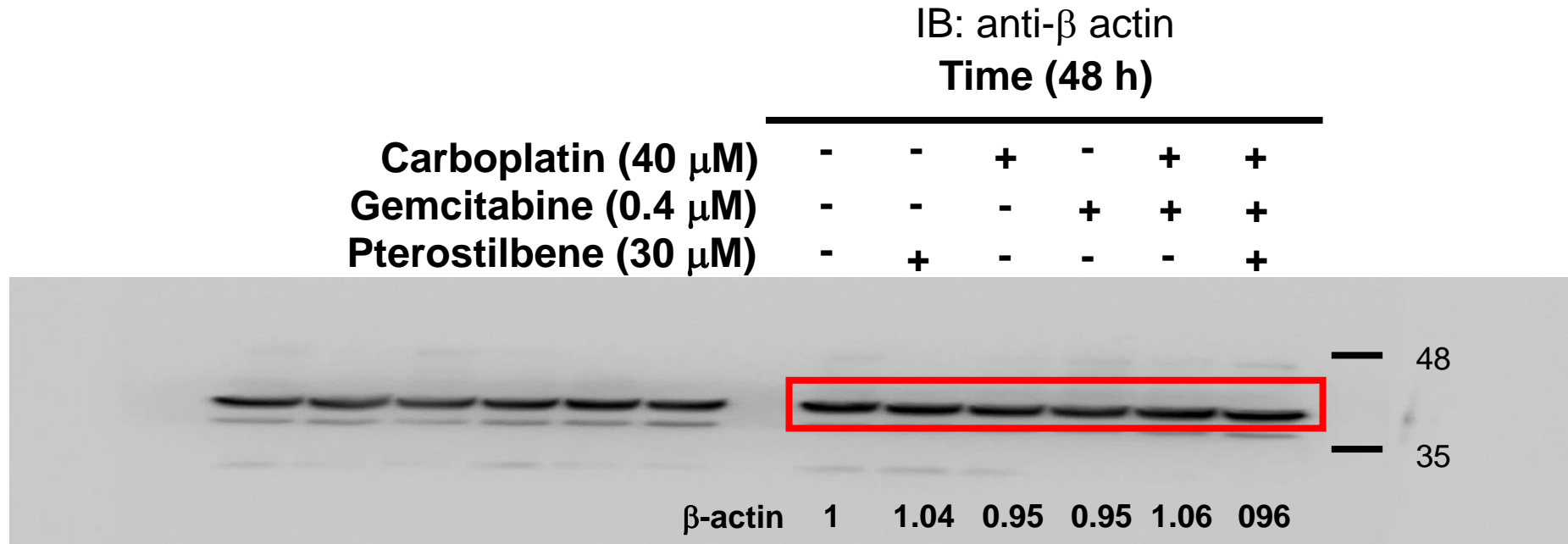
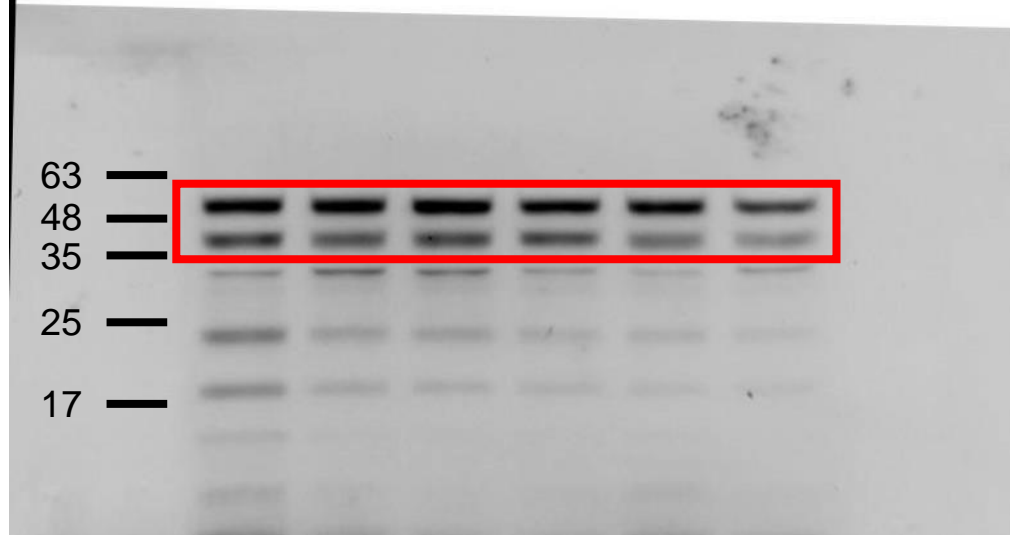


Fig. 4A Cis+Gem+PS_Atg12-Atg5, Atg5

IB: anti-Atg5

Time (48 h)

Cisplatin (4 μ M)	-	-	+	-	+	+
Gemcitabine (0.4 μ M)	-	-	-	+	+	+
Pterostilbene (30 μ M)	-	+	-	-	-	+



Atg12-Atg5	1	1.06	1.23	1.06	1.12	0.72
Atg5	1	0.96	1.19	1.07	0.89	0.56

Fig. 4A Cis+Gem+PS_beta actin (Atg12-Atg5, Atg5)

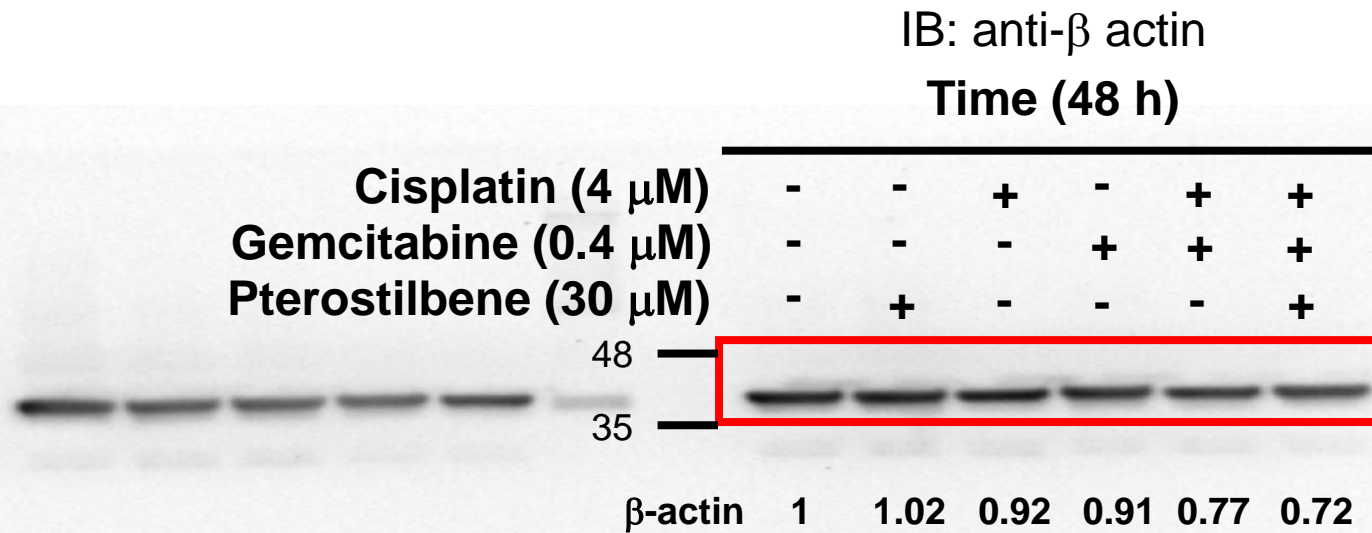


Fig. 4A Cis+Gem+PS_Class III PI3K

IB: anti-Class III PI3K

Time (48 h)

Cisplatin (4 μ M)	-	-	+	-	+	+
Gemcitabine (0.4 μ M)	-	-	-	+	+	+
Pterostilbene (30 μ M)	-	+	-	-	-	+

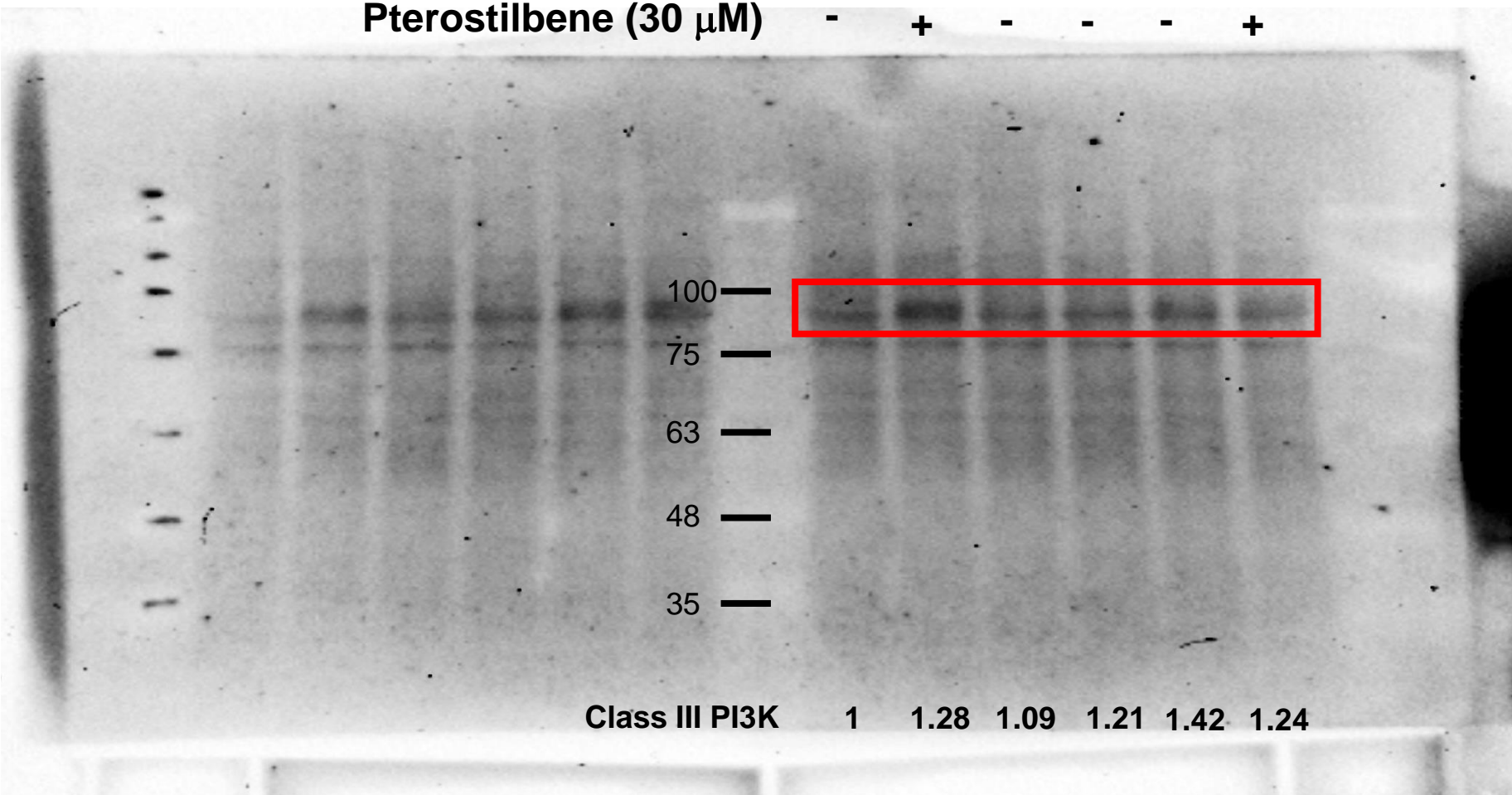


Fig. 4A Cis+Gem+PS_beta actin (Class III PI3K)

IB: anti- β actin

Time (48 h)

Cisplatin (4 μ M)	-	-	+	-	+	+
Gemcitabine (0.4 μ M)	-	-	-	+	+	+
Pterostilbene (30 μ M)	-	+	-	-	-	+

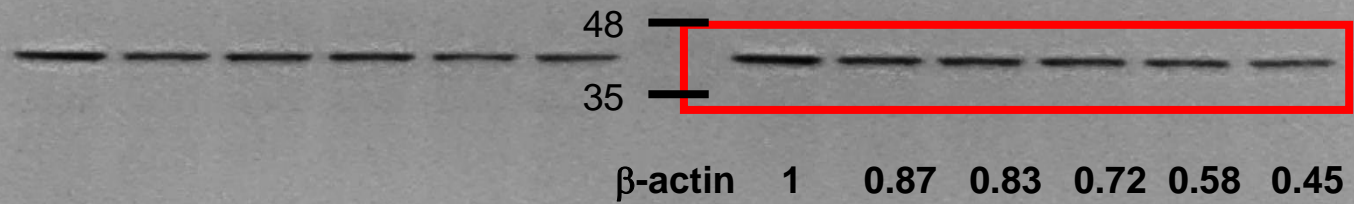


Fig. 4A Car+Gem+PS_Atg12-Atg5, Atg5

IB: anti-Atg5

Time (48 h)

Carboplatin (40 μ M)	-	-	+	-	+	+
Gemcitabine (0.4 μ M)	-	-	-	+	+	+
Pterostilbene (30 μ M)	-	+	-	-	-	+

63 —

48 —

35 —

25 —

Atg12-Atg5	1	0.94	0.85	1.15	1.23	1.12
Atg5	1	1.12	1.13	1.40	1.44	1.27

Fig. 4A Car+Gem+PS_beta actin (Atg12-Atg5, Atg5)

IB: anti- β actin

Time (48 h)

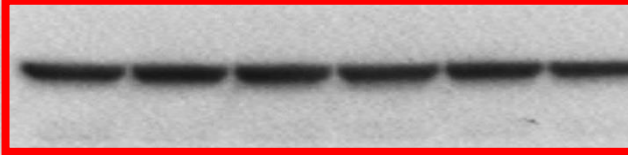
Carboplatin (40 μ M)	-	-	+	-	+	+	
Gemcitabine (0.4 μ M)	-	-	-	+	+	+	
Pterostilbene (30 μ M)	-	+	-	-	-	+	
48							
35							
β -actin	1	1.00	1.01	1.00	0.97	0.83	

Fig. 4A Car+Gem+PS_Class III PI3K

IB: anti-Class III PI3K

Time (48 h)

Carboplatin (40 μ M)	-	-	+	-	+	+
Gemcitabine (0.4 μ M)	-	-	-	+	+	+
Pterostilbene (30 μ M)	-	+	-	-	-	+

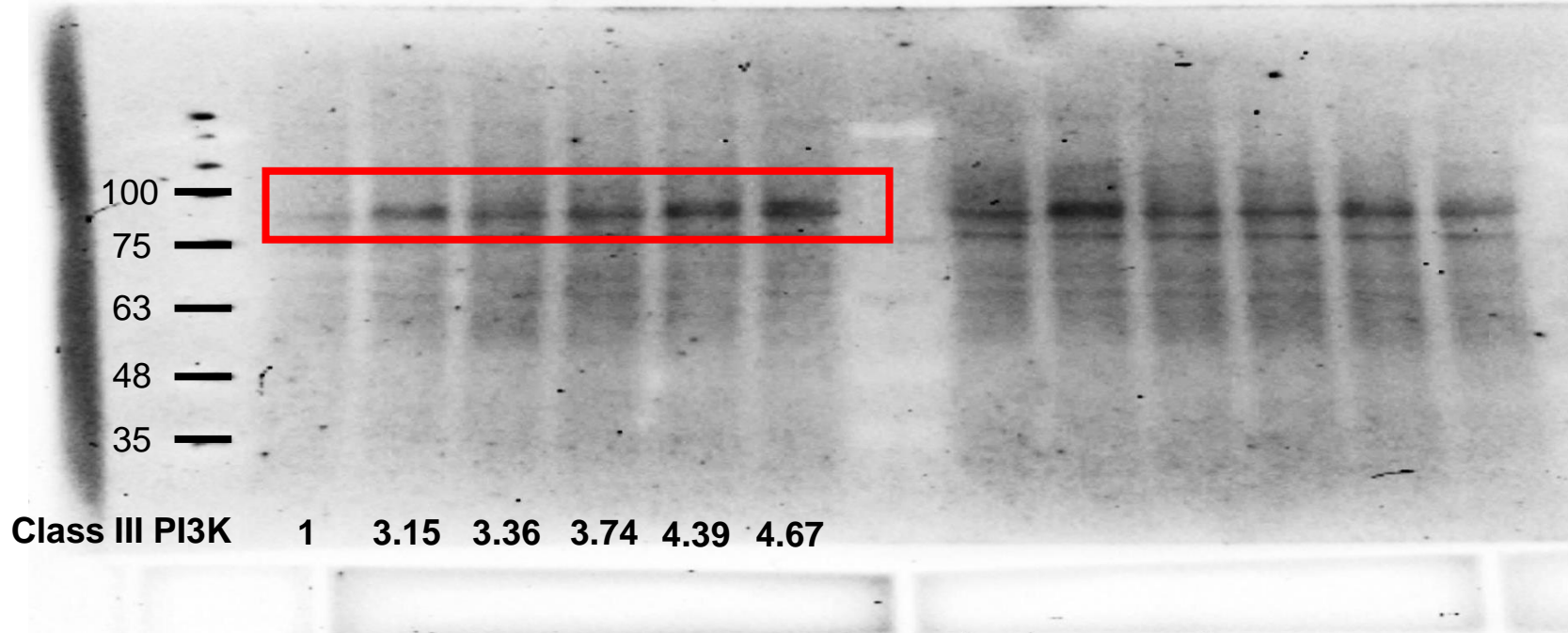


Fig. 4A Car+Gem+PS_beta actin (Class III PI3K)

IB: anti- β actin

Time (48 h)

Carboplatin (4 μ M)	-	-	+	-	+	+
Gemcitabine (0.4 μ M)	-	-	-	+	+	+
Pterostilbene (30 μ M)	-	+	-	-	-	+

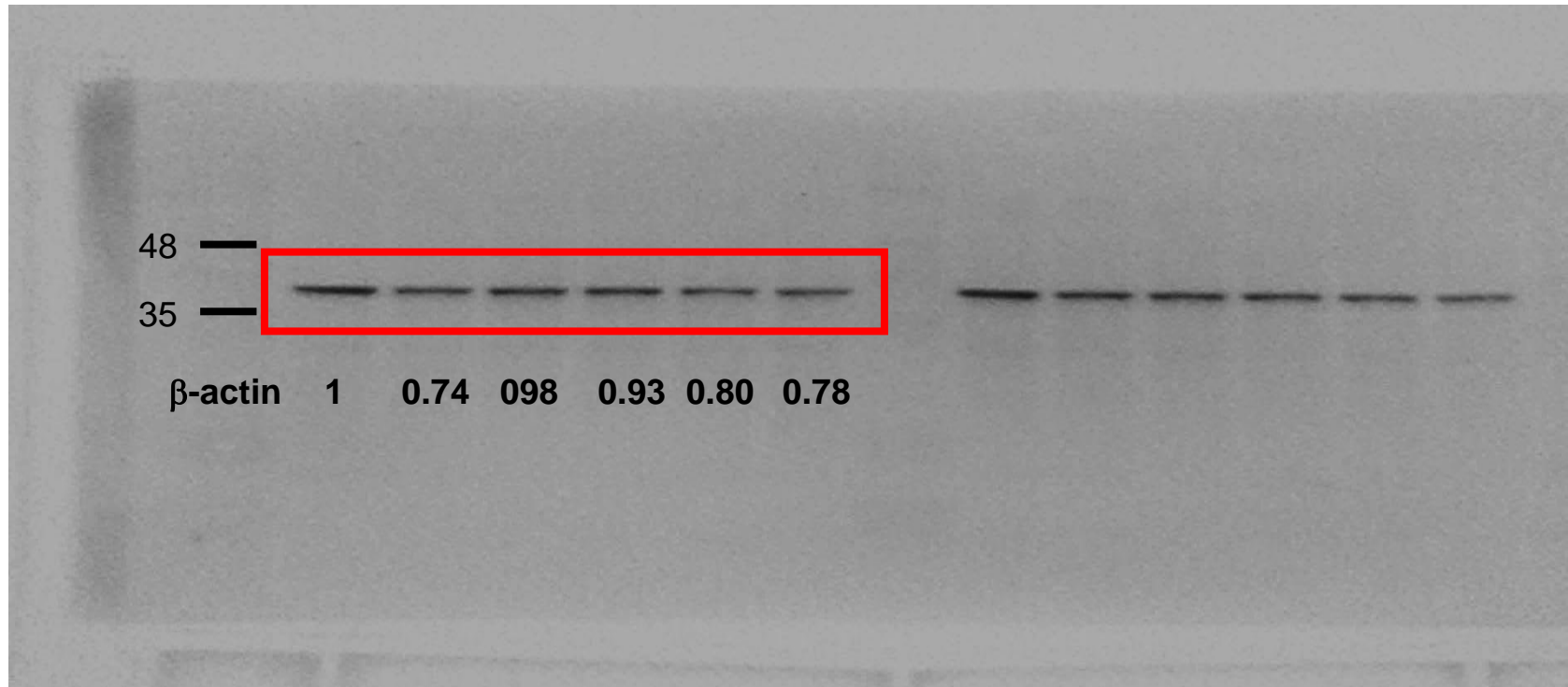
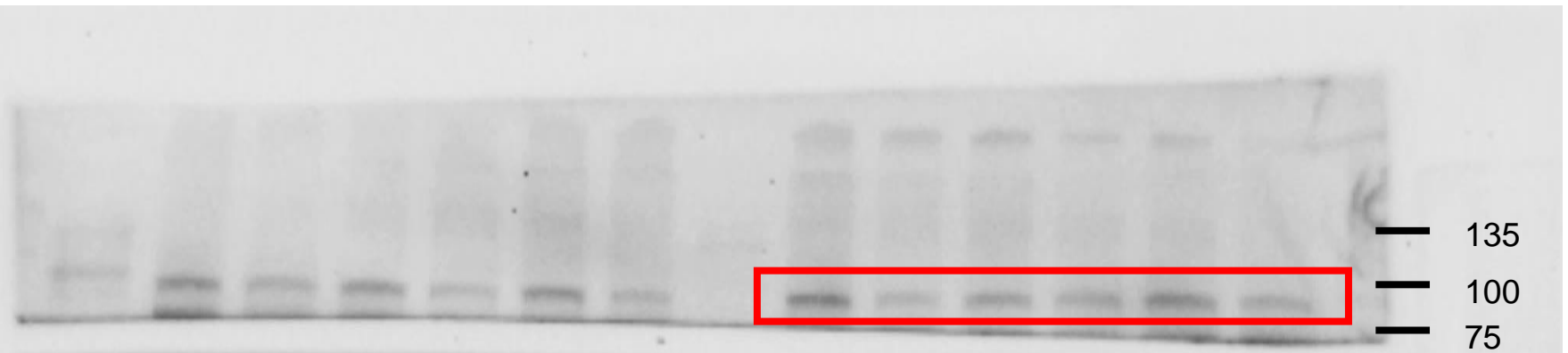


Fig. 4B Cis+Gem+PS_p-Class I PI3K

IB: anti-p-Class I PI3K

Time (48 h)

Cisplatin (4 μ M)	-	-	+	-	+	+
Gemcitabine (0.4 μ M)	-	-	-	+	+	+
Pterostilbene (30 μ M)	-	+	-	-	-	+



p-class I PI3K 1 0.42 0.73 0.85 1.51 1.00

Fig. 4B Cis+Gem+PS_p-mTOR

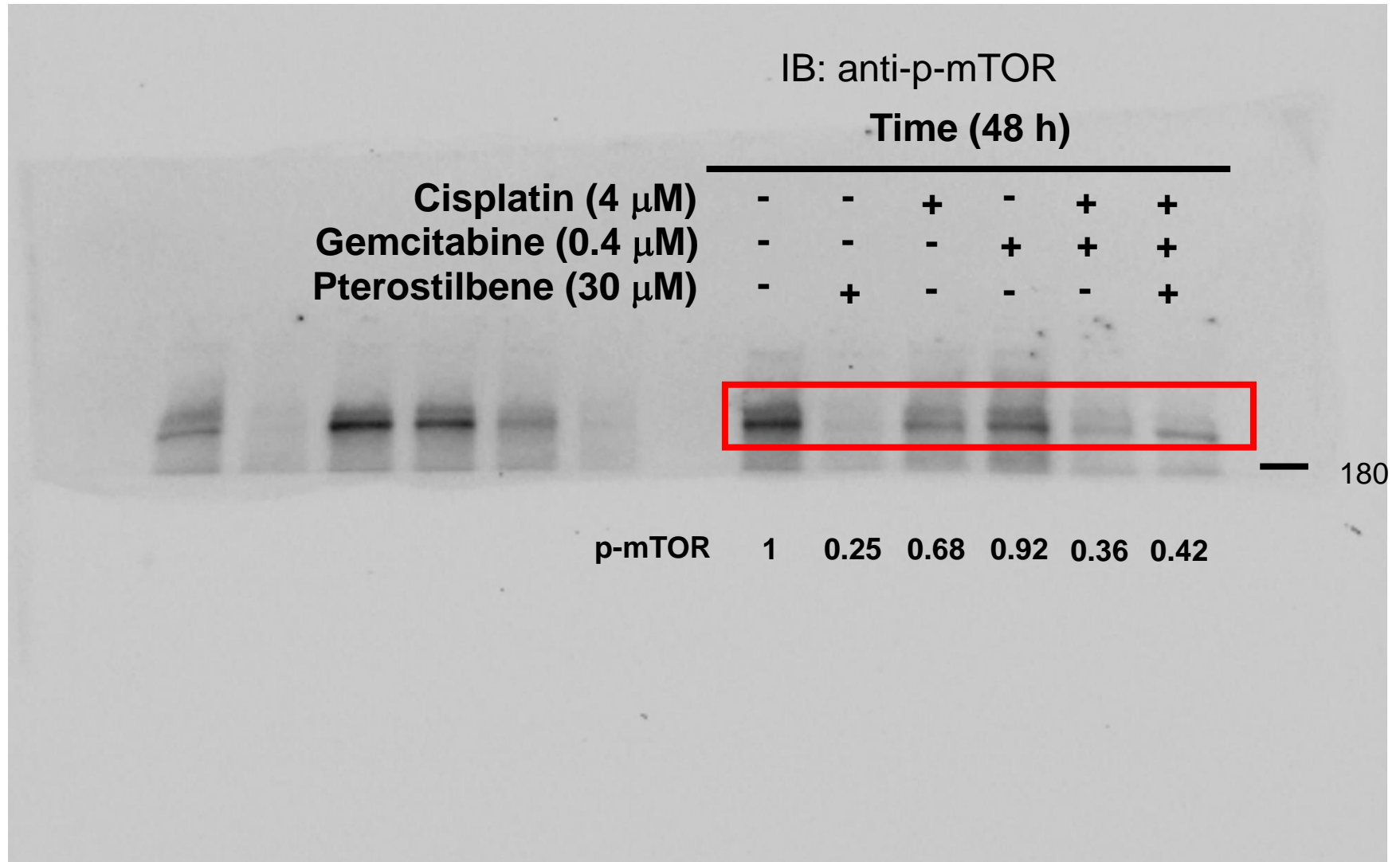


Fig. 4B Cis+Gem+PS_p-p70S6K

IB: anti-p-p70S6K

Time (48 h)

Cisplatin (4 μ M)	-	-	+	-	+	+
Gemcitabine (0.4 μ M)	-	-	-	+	+	+
Pterostilbene (30 μ M)	-	+	-	-	-	+

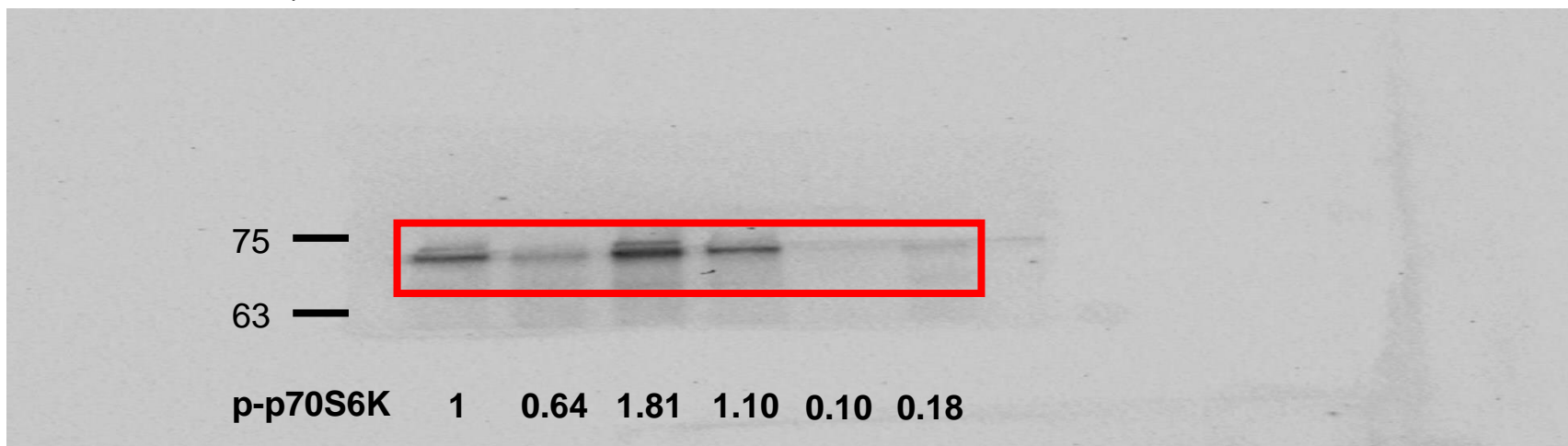


Fig. 4B Cis+Gem+PS_beta actin (p-Class I PI3K, p-mTOR, p-70S6K)

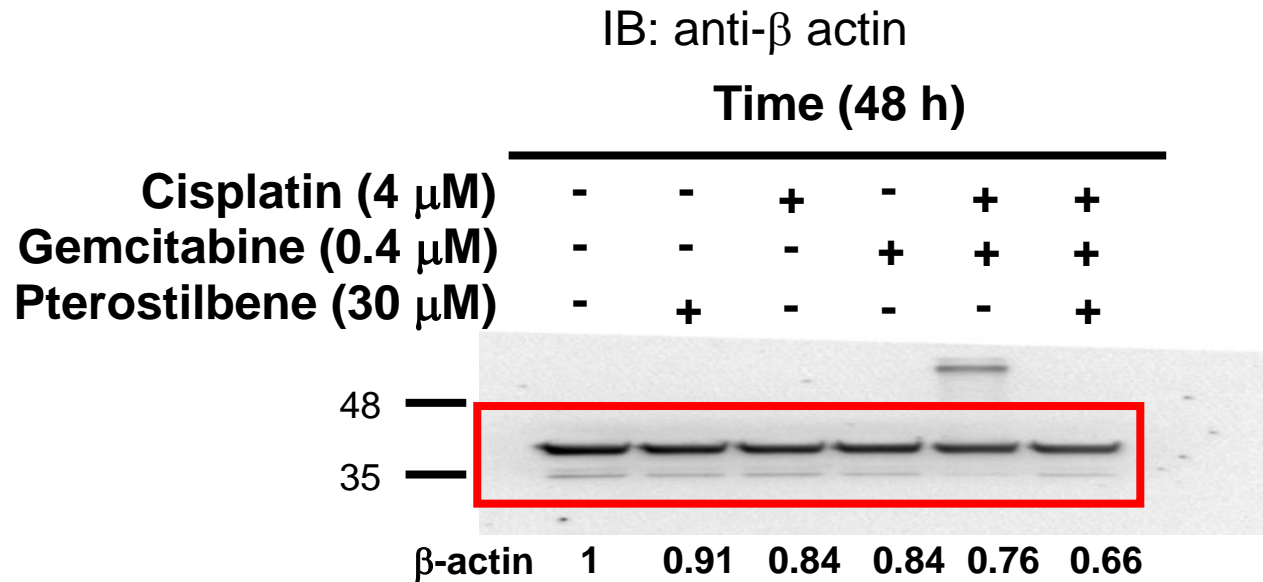


Fig. 4B Cis+Gem+PS_p-MEK

IB: anti-p-MEK

Time (48 h)

Cisplatin (4 μM)	-	-	+	-	+	+
Gemcitabine (0.4 μM)	-	-	-	+	+	+
Pterostilbene (30 μM)	-	+	-	-	-	+

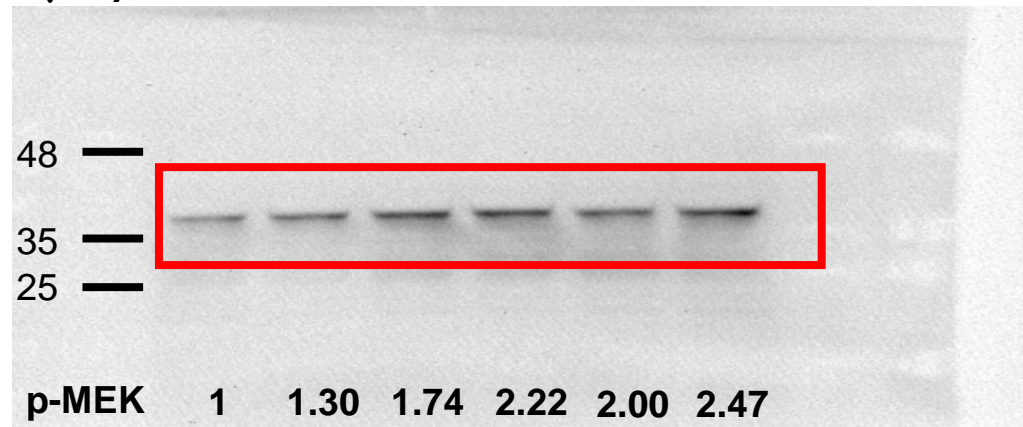


Fig. 4B Cis+Gem+PS_p-ERK

IB: anti-p-ERK

Time (48 h)

Cisplatin (4 μ M)	-	-	+	-	+	+
Gemcitabine (0.4 μ M)	-	-	-	+	+	+
Pterostilbene (30 μ M)	-	+	-	-	-	+

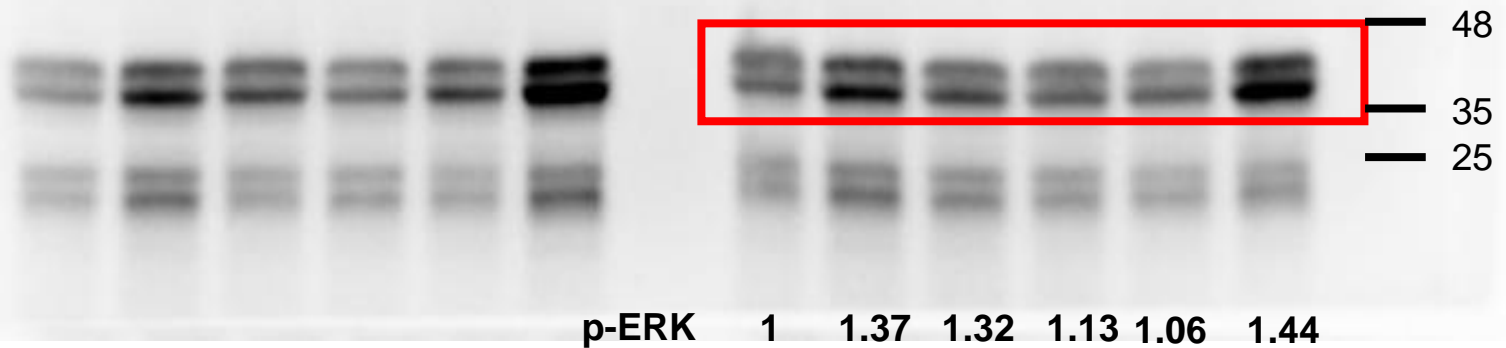


Fig. 4B Cis+Gem+PS_beta actin (p-MEK, p-ERK)

IB: anti- β actin

Time (48 h)

Cisplatin (4 μ M)	-	-	+	-	+	+
Gemcitabine (0.4 μ M)	-	-	-	+	+	+
Pterostilbene (30 μ M)	-	+	-	-	-	+

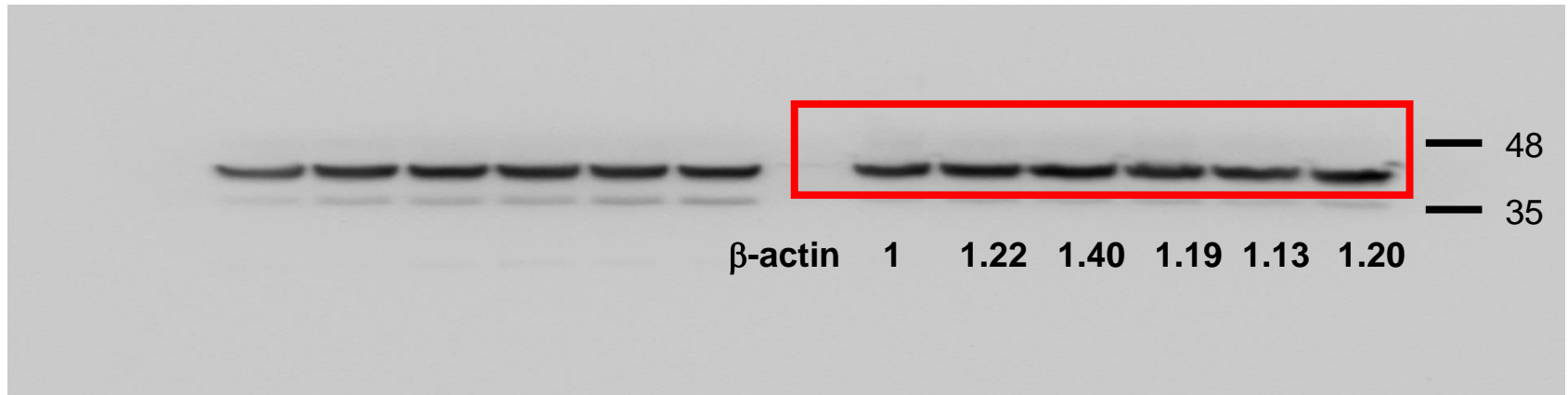


Fig. 4B Car+Gem+PS_p-Class I PI3K

IB: anti-Class III PI3K

Time (48 h)

Carboplatin (40 μM)	-	-	+	-	+	+
Gemcitabine (0.4 μM)	-	-	-	+	+	+
Pterostilbene (30 μM)	-	+	-	-	-	+

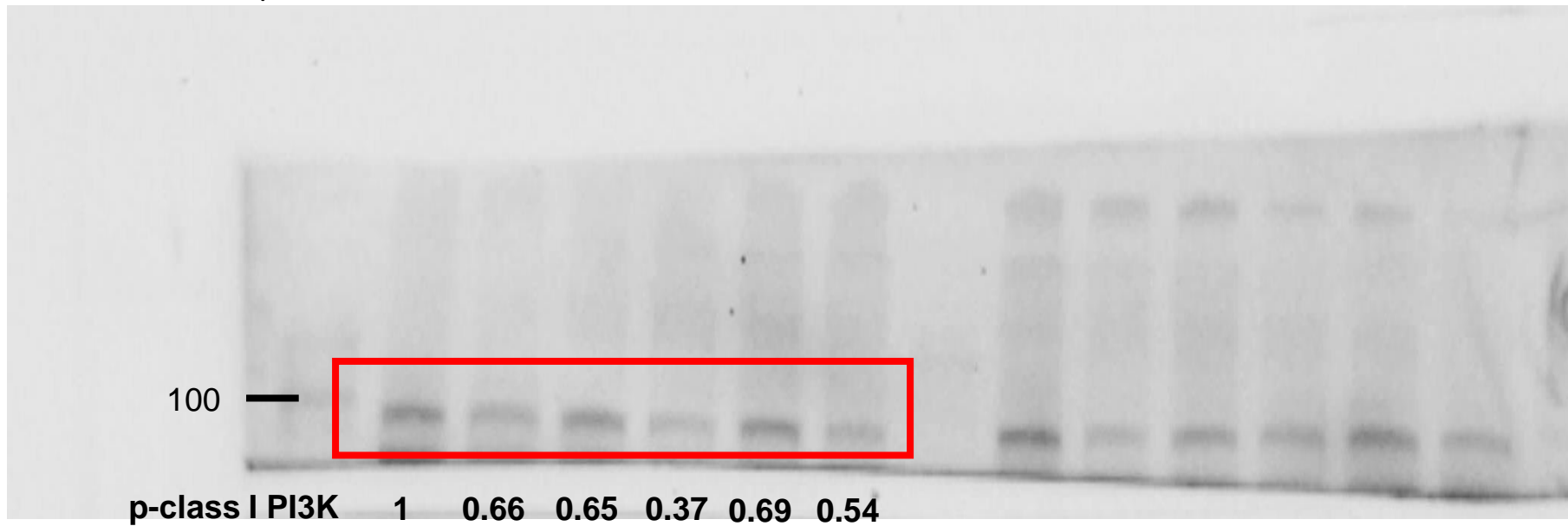


Fig. 4B Car+Gem+PS_p-mTOR

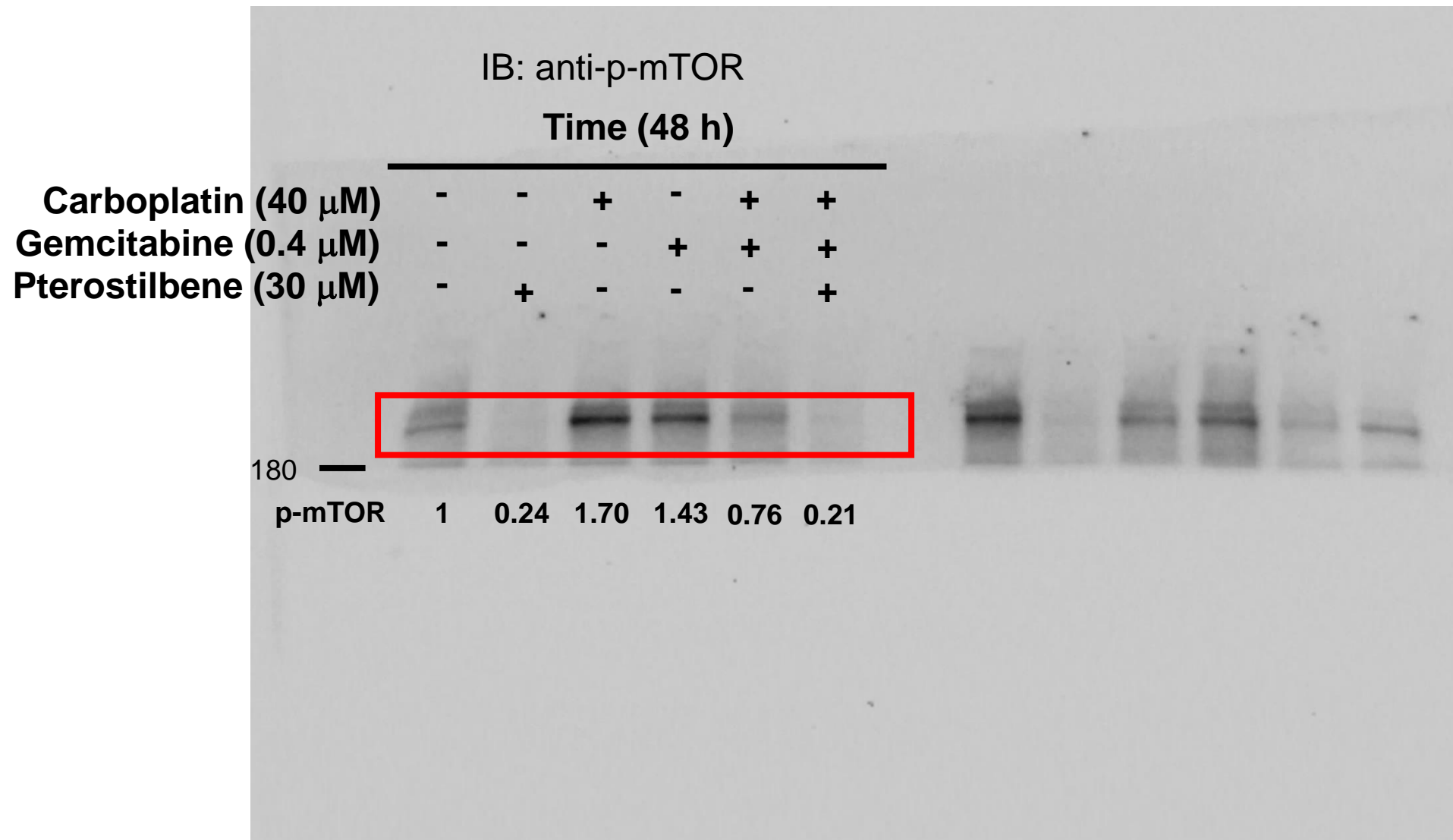


Fig. 4B Car+Gem+PS_p-p70S6K

IB: anti-p-p70S6K

Time (48 h)

Carboplatin (40 μ M)

- - + - + +

Gemcitabine (0.4 μ M)

- - - + + +

Pterostilbene (30 μ M)

- + - - - +

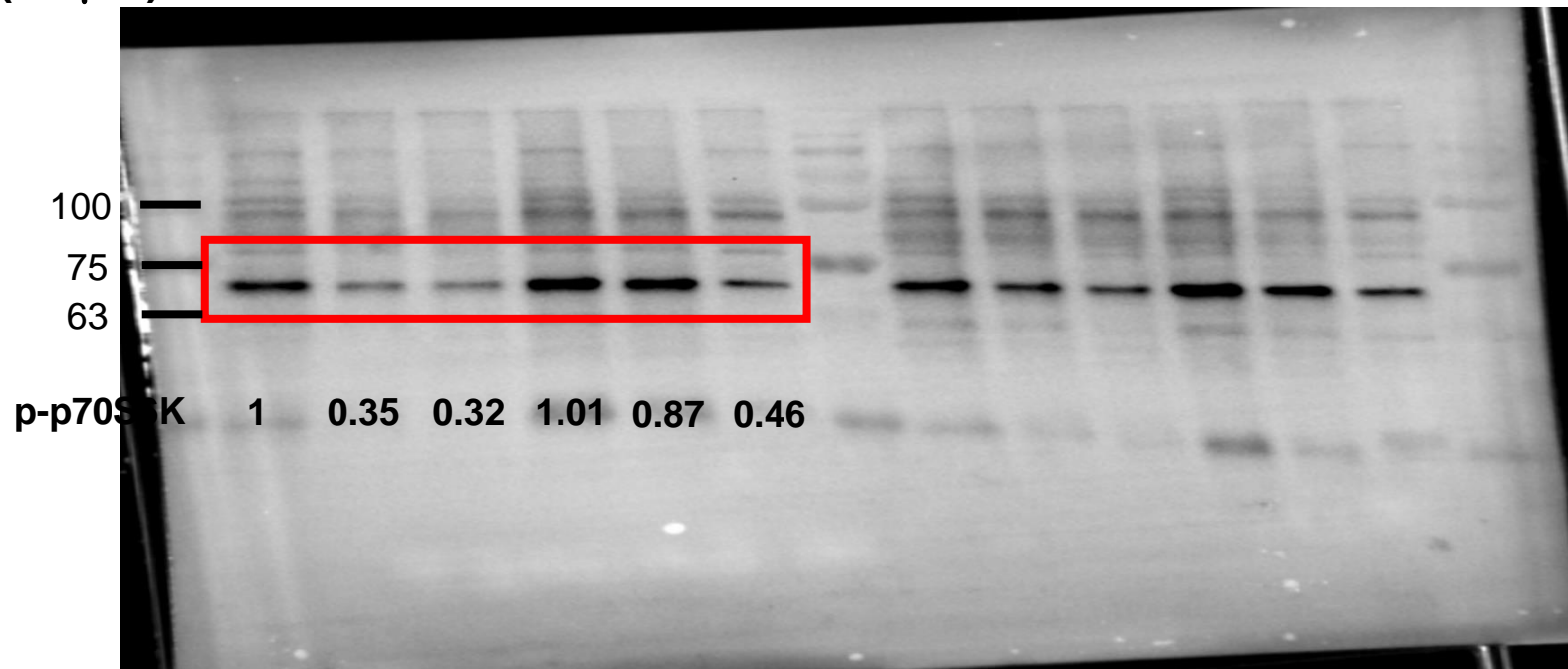


Fig. 4B Car+Gem+PS_beta actin (p-Class I PI3K, p-mTOR, p-70S6K)

IB: anti- β actin

Time (48 h)

Carboplatin (40 μ M)	-	-	+	-	+	+
Gemcitabine (0.4 μ M)	-	-	-	+	+	+
Pterostilbene (30 μ M)	-	+	-	-	-	+

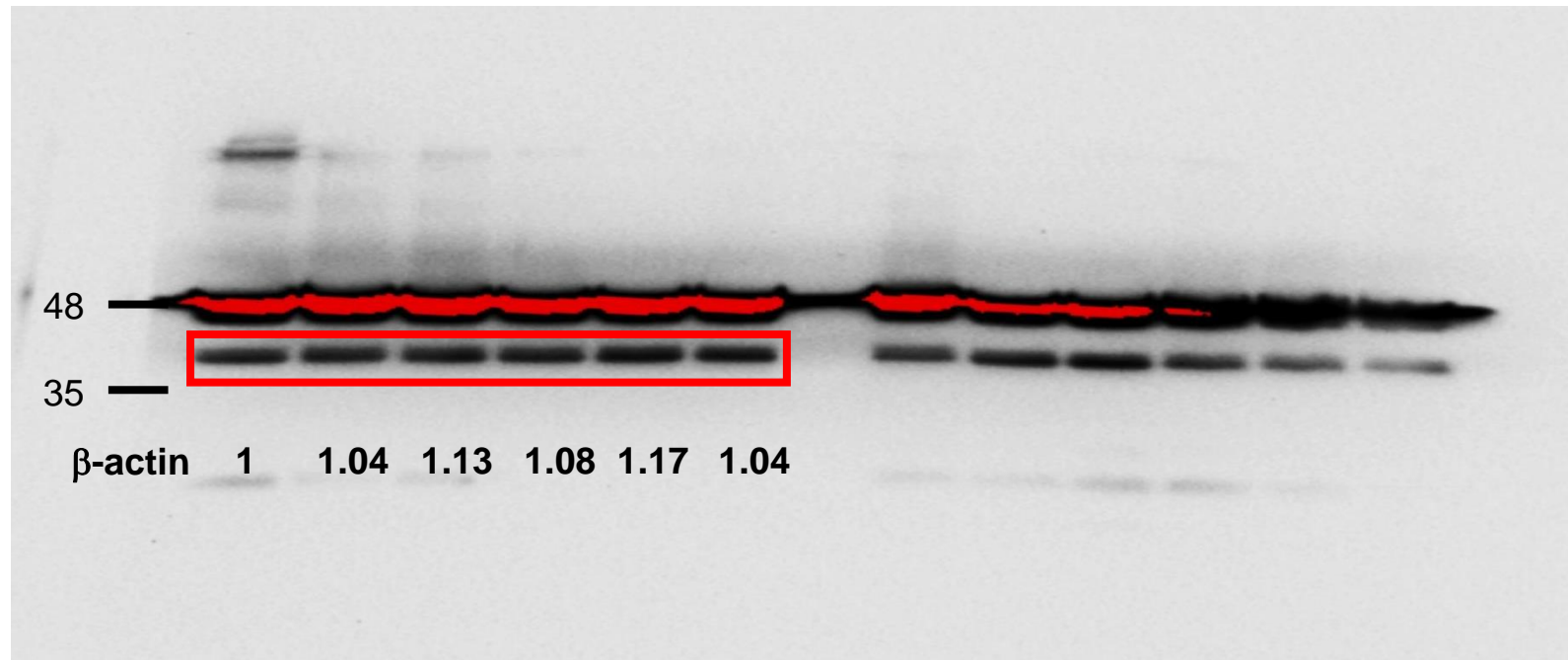


Fig. 4B Car+Gem+PS_p-MEK

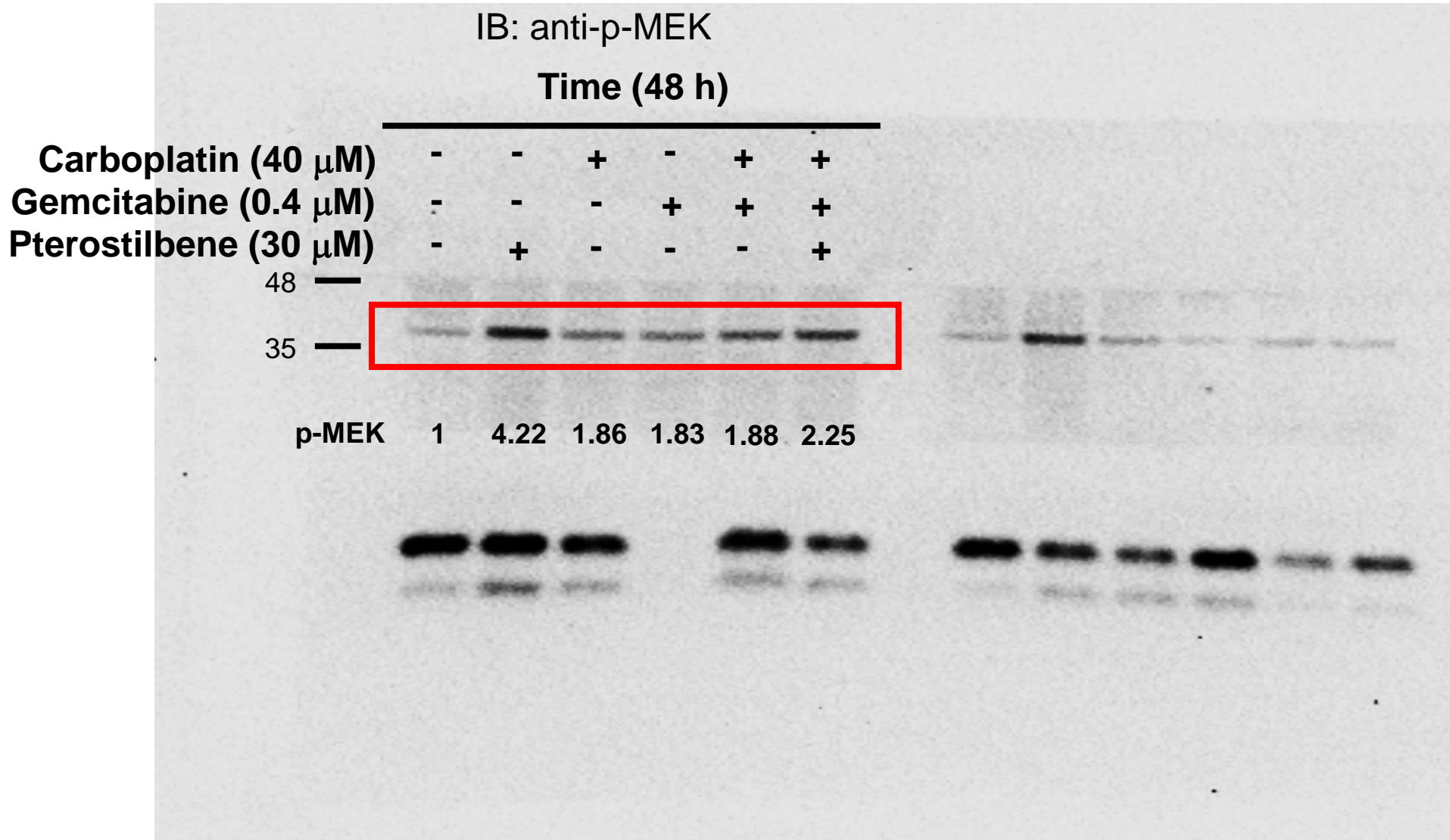


Fig. 4B Car+Gem+PS_p-ERK

IB: anti-p-ERK

Time (48 h)

Carboplatin (40 μ M)	-	-	+	-	+	+
Gemcitabine (0.4 μ M)	-	-	-	+	+	+
Pterostilbene (30 μ M)	-	+	-	-	-	+

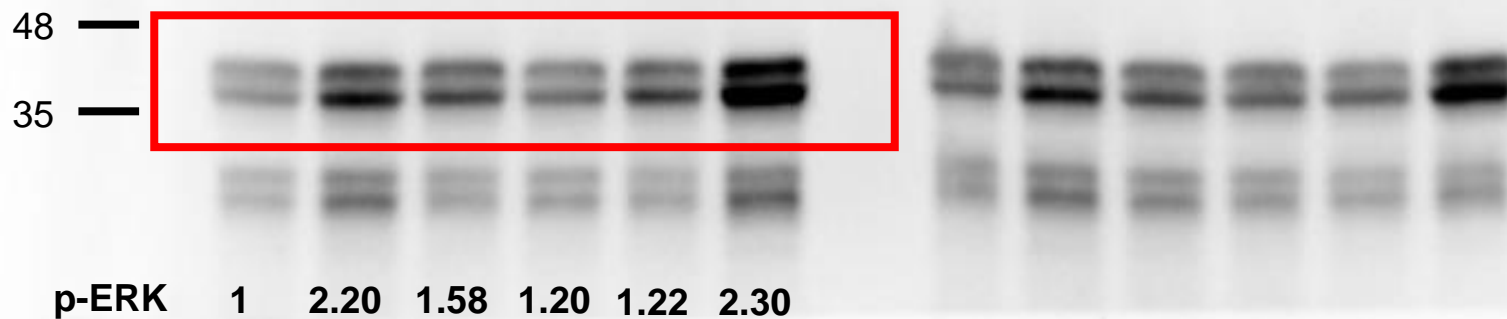


Fig. 4B Car+Gem+PS_beta actin (p-MEK, p-ERK)

IB: anti- β actin

Time (48 h)

Carboplatin (40 μ M)	-	-	+	-	+	+
Gemcitabine (0.4 μ M)	-	-	-	+	+	+
Pterostilbene (30 μ M)	-	+	-	-	-	+

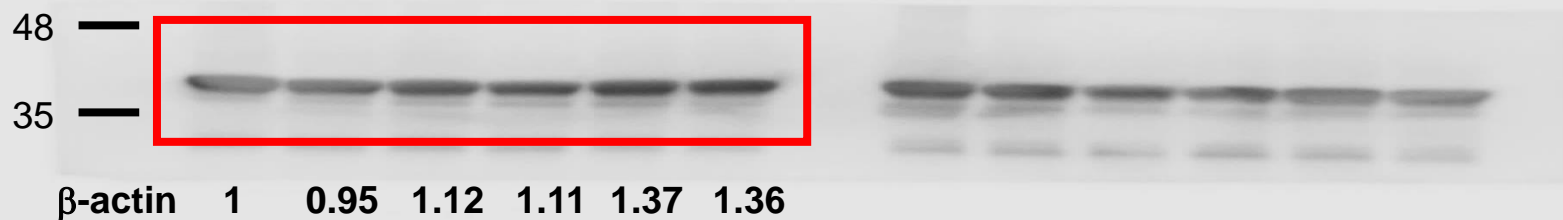


Fig. 5E Cis+Gem+PS_Pan-Ras

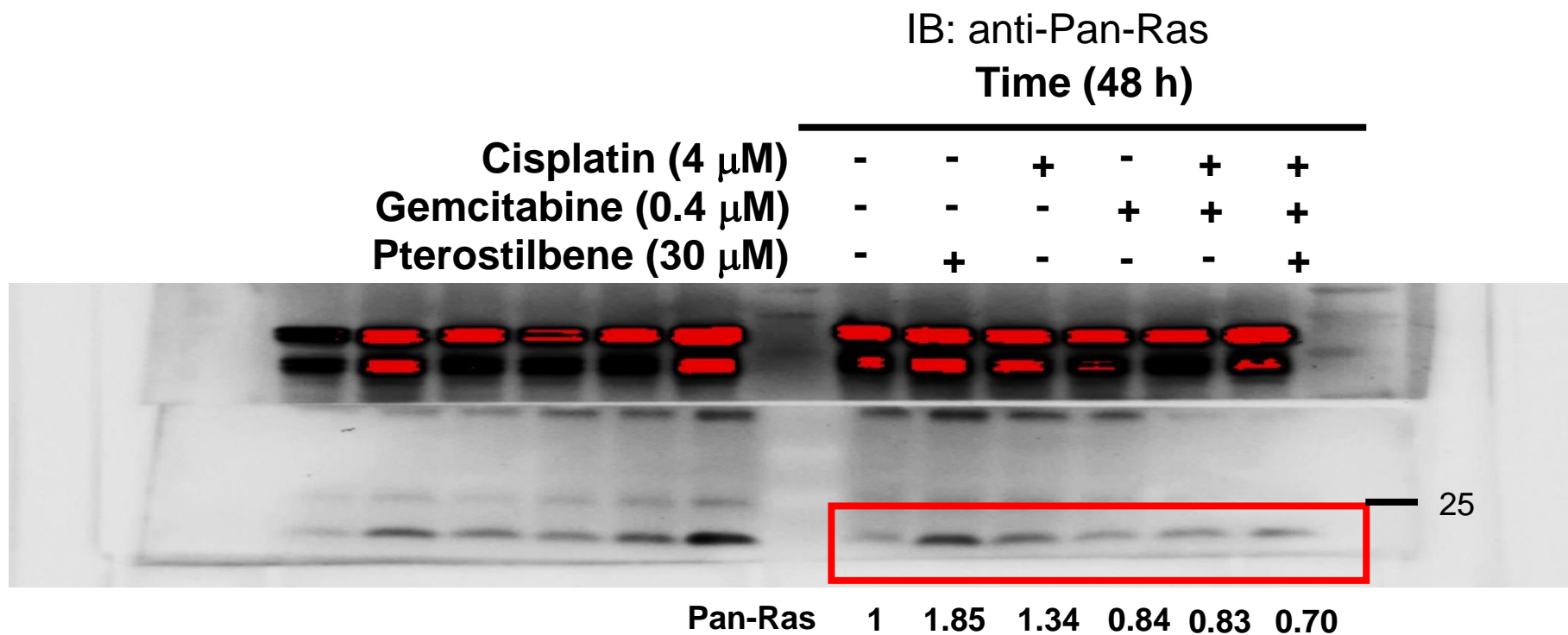


Fig. 5E Cis+Gem+PS_p-RB

IB: anti-p-RB
Time (48 h)

Cisplatin (4 μ M)	-	-	+	-	+	+
Gemcitabine (0.4 μ M)	-	-	-	+	+	+
Pterostilbene (30 μ M)	-	+	-	-	-	+

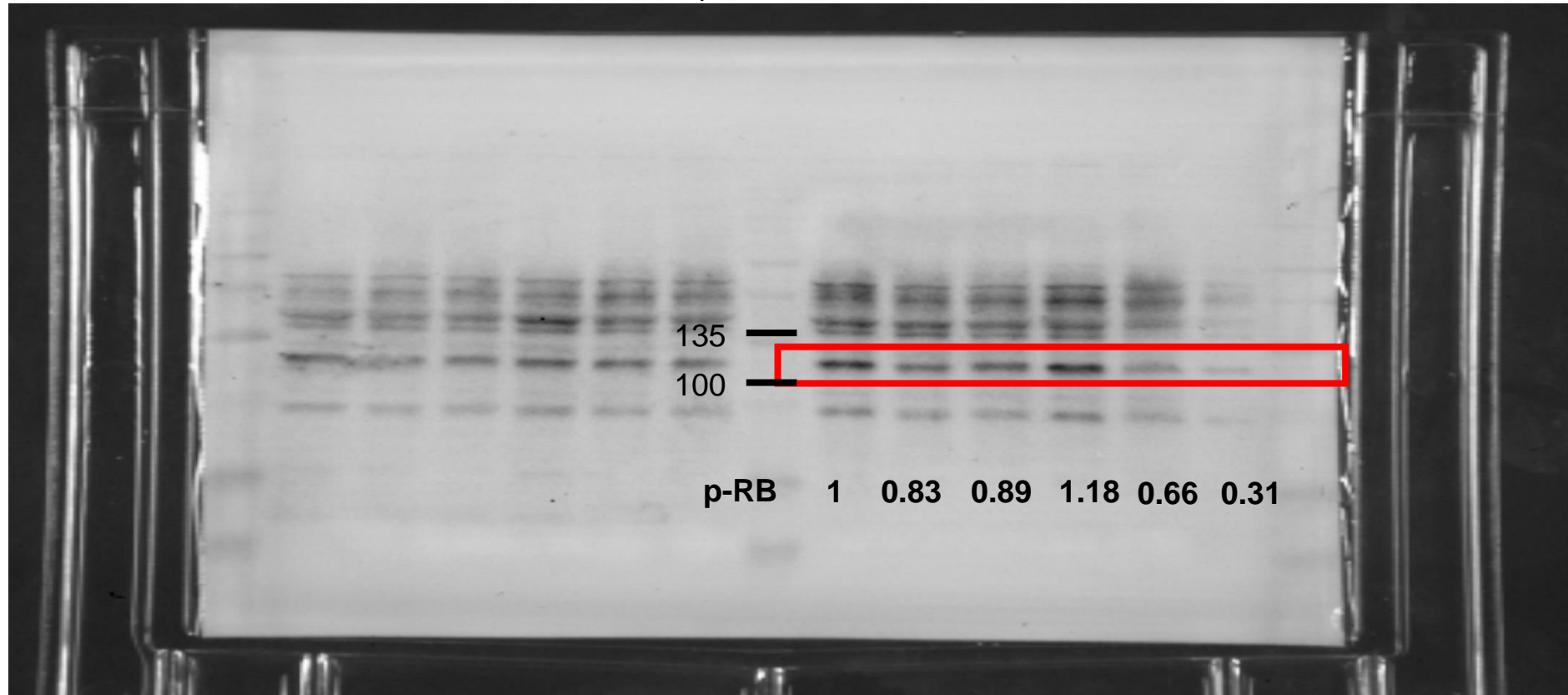


Fig. 5E Cis+Gem+PS_beta actin (Pan-Ras, p-RB)

IB: anti- β actin

Time (48 h)

Cisplatin (4 μ M)	-	-	+	-	+	+
Gemcitabine (0.4 μ M)	-	-	-	+	+	+
Pterostilbene (30 μ M)	-	+	-	-	-	+

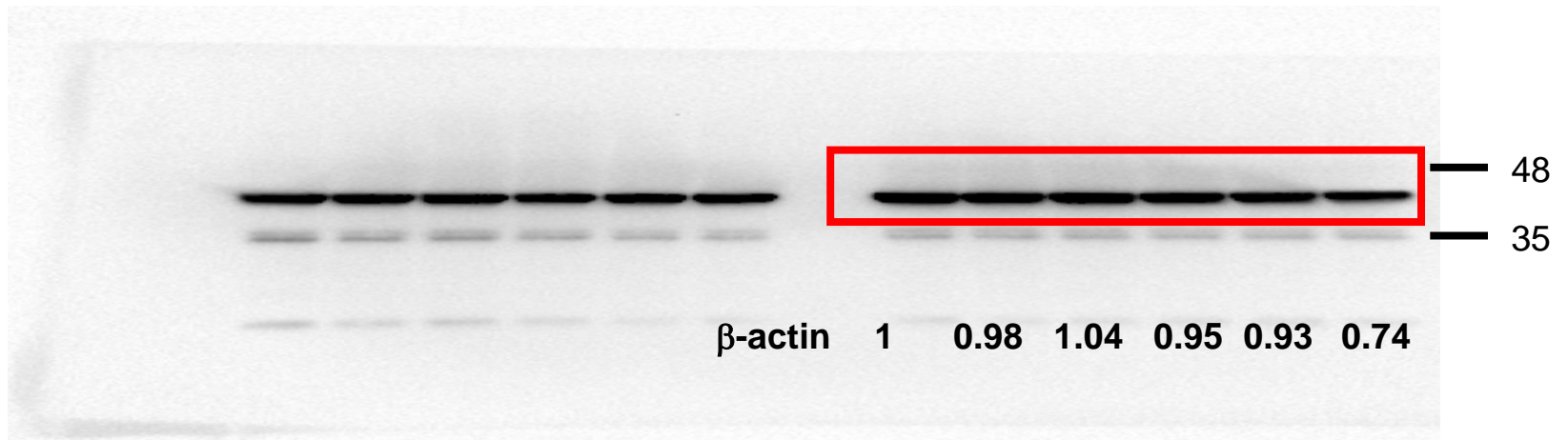


Fig. 5E Cis+Gem+PS_p-Aurora A

IB: anti-p-Aurora A

Time (48 h)

Cisplatin (4 μ M)	-	-	+	-	+	+
Gemcitabine (0.4 μ M)	-	-	-	+	+	+
Pterostilbene (30 μ M)	-	+	-	-	-	+

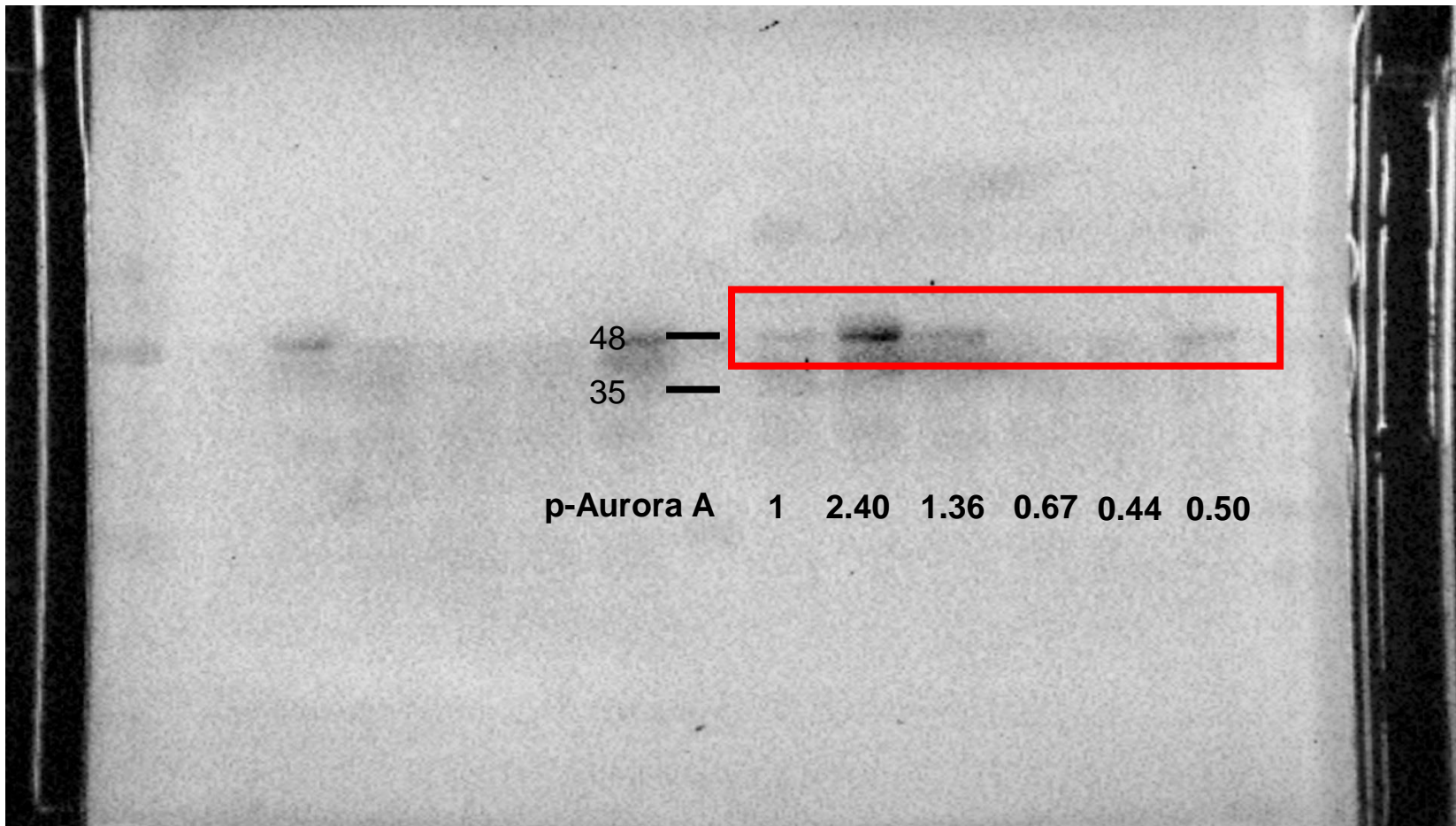


Fig. 5E Cis+Gem+PS_beta actin (p-Aurora A)

IB: anti- β actin

Time (48 h)

Cisplatin (4 μ M)	-	-	+	-	+	+
Gemcitabine (0.4 μ M)	-	-	-	+	+	+
Pterostilbene (30 μ M)	-	+	-	-	-	+

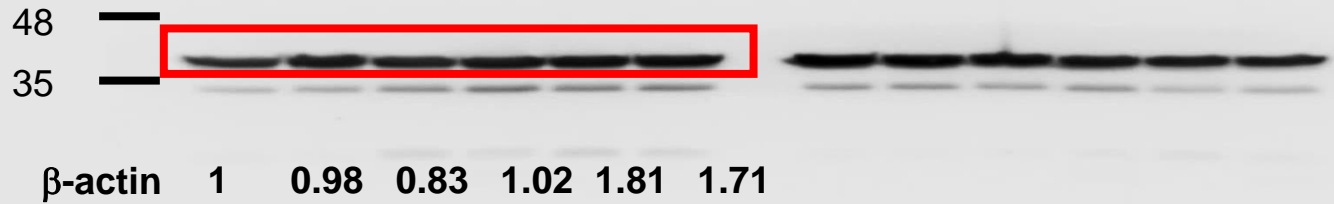
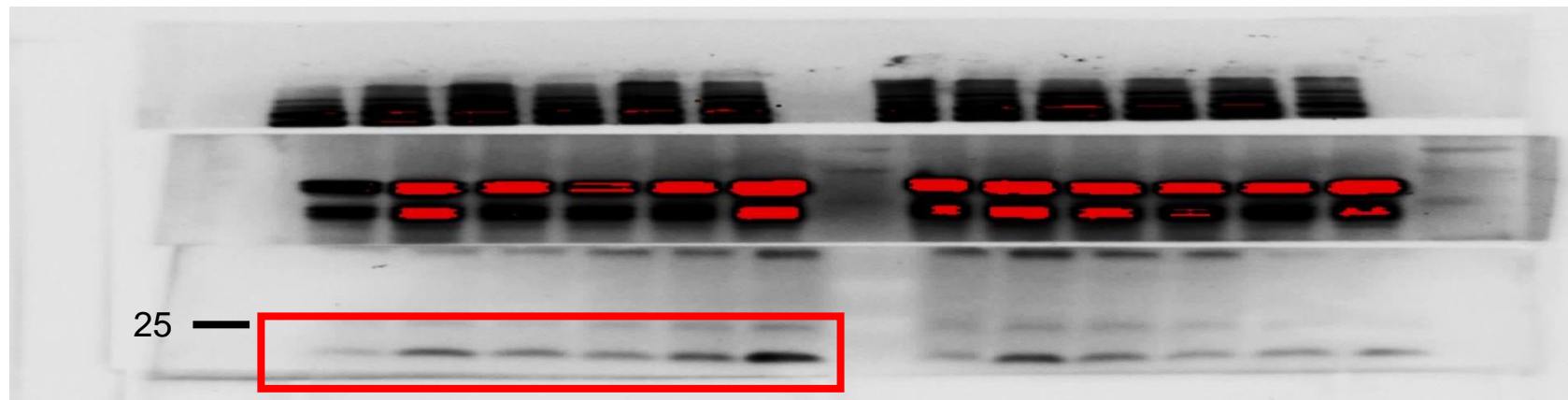


Fig. 5E Car+Gem+PS_Pan-Ras

IB: anti-Pan Ras

Time (48 h)

Carboplatin (40 μ M)	-	-	+	-	+	+
Gemcitabine (0.4 μ M)	-	-	-	+	+	+
Pterostilbene (30 μ M)	-	+	-	-	-	+



Pan-Ras 1 2.08 2.42 3.34 3.13 3.63

Fig. 5E Car+Gem+PS_p-RB
IB: anti-p-RB

Time (48 h)

Carboplatin (40 μ M)	-	-	+	-	+	+
Gemcitabine (0.4 μ M)	-	-	-	+	+	+
Pterostilbene (30 μ M)	-	+	-	-	-	+

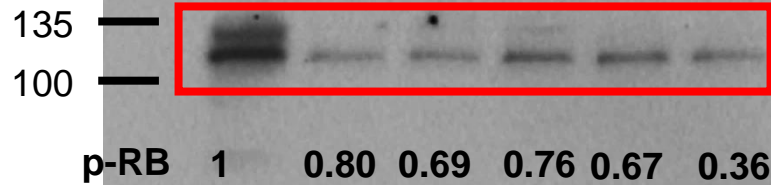


Fig. 5E Car+Gem+PS_beta actin (Pan-Ras, p-RB)

IB: anti- β actin

Time (48 h)

Carboplatin (40 μ M)

- - + - + +

Gemcitabine (0.4 μ M)

- - - + + +

Pterostilbene (30 μ M)

- + - - - +

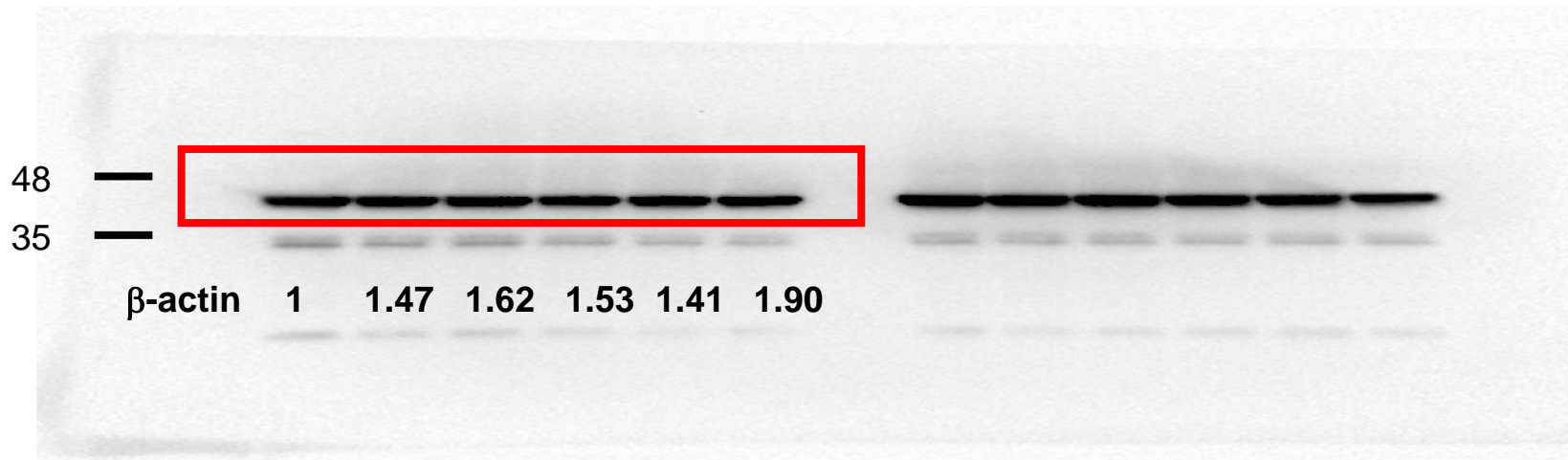


Fig. 5E Car+Gem+PS_p-Aurora A

IB: anti-p-Aurora A

Time (48 h)

Carboplatin (40 μ M)	-	-	+	-	+	+
Gemcitabine (0.4 μ M)	-	-	-	+	+	+
Pterostilbene (30 μ M)	-	+	-	-	-	+

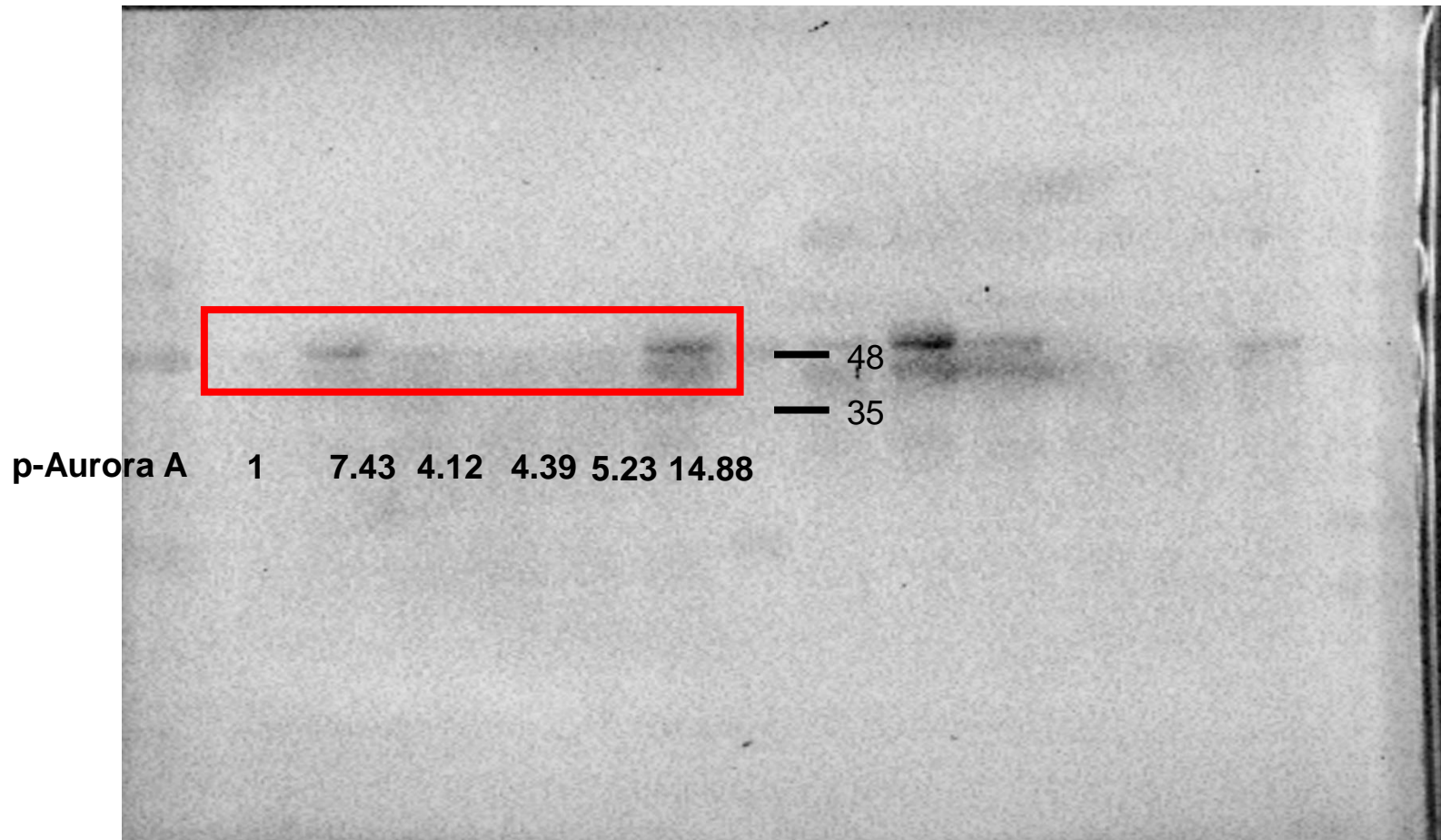


Fig. 5E Car+Gem+PS_beta actin (p-Aurora A)

IB: anti- β actin

Time (48 h)

Carboplatin (40 μ M)	-	-	+	-	+	+
Gemcitabine (0.4 μ M)	-	-	-	+	+	+
Pterostilbene (30 μ M)	-	+	-	-	-	+

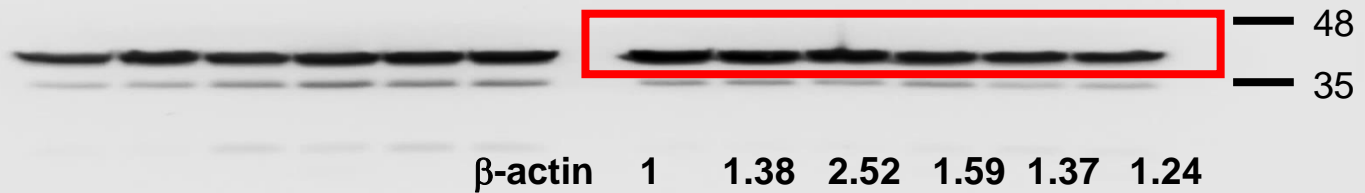


Fig. 6F tumor_p-Class I PI3K

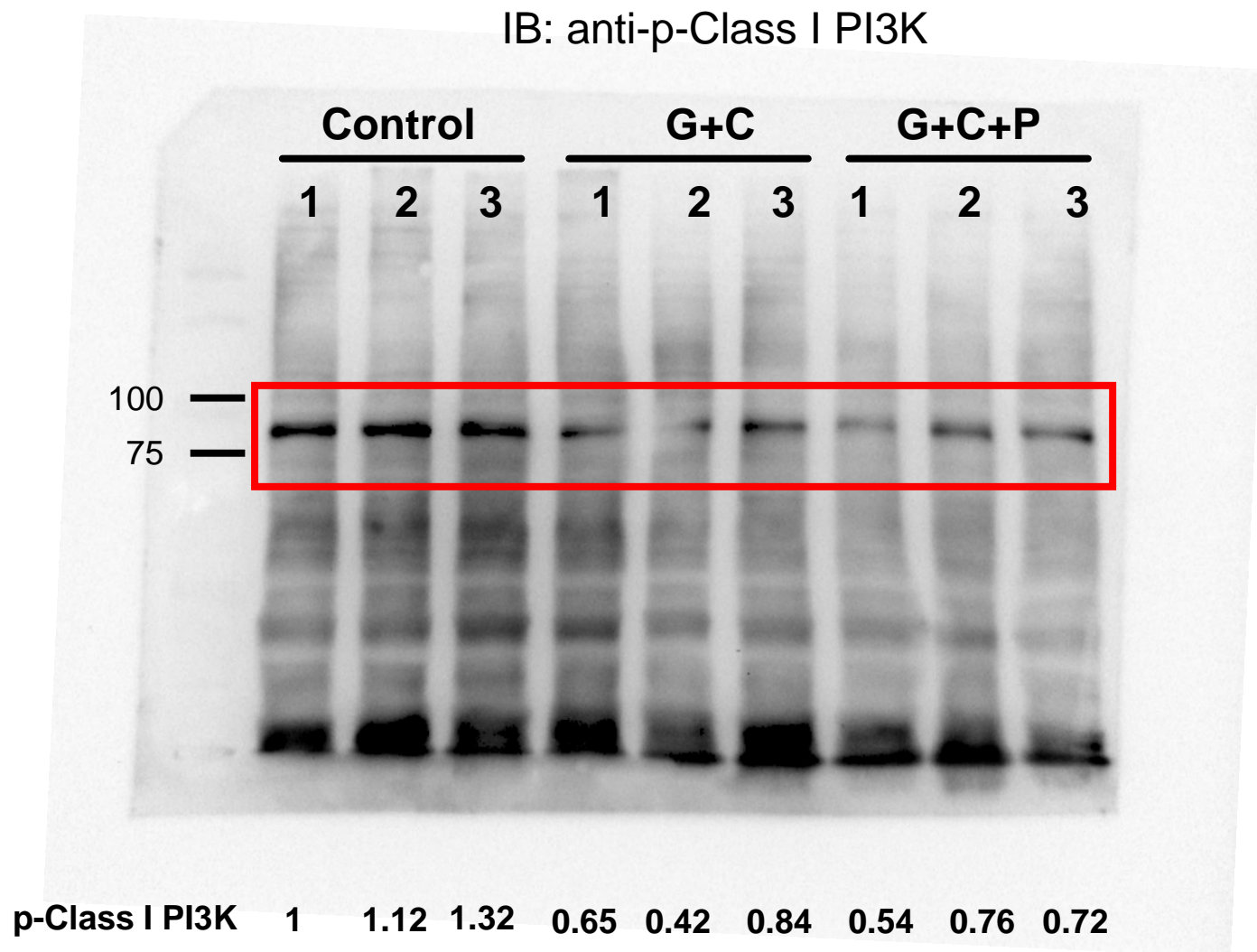


Fig. 6F tumor_p-mTOR

IB: anti-p-mTOR

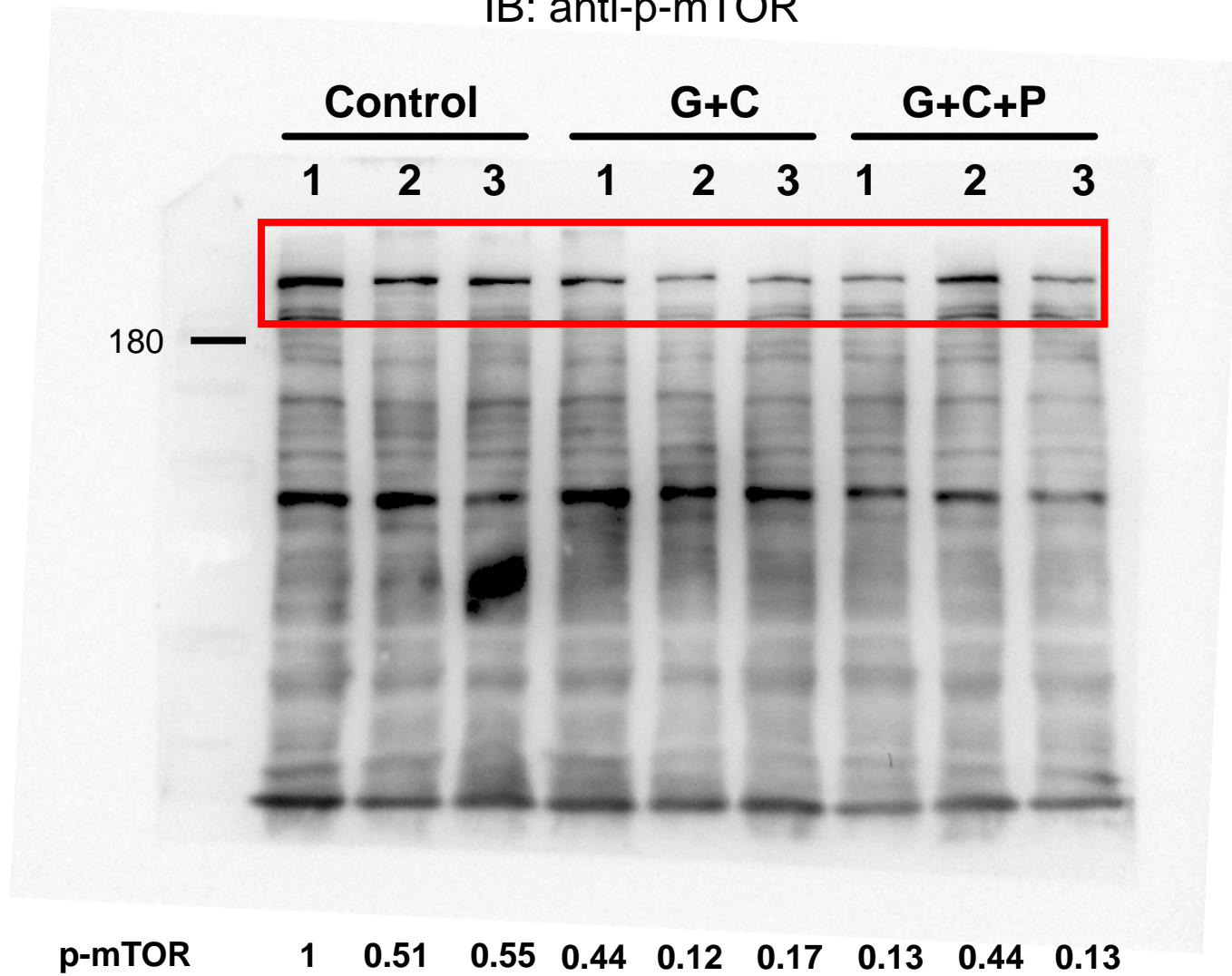


Fig. 6F tumor_p-p70S6K

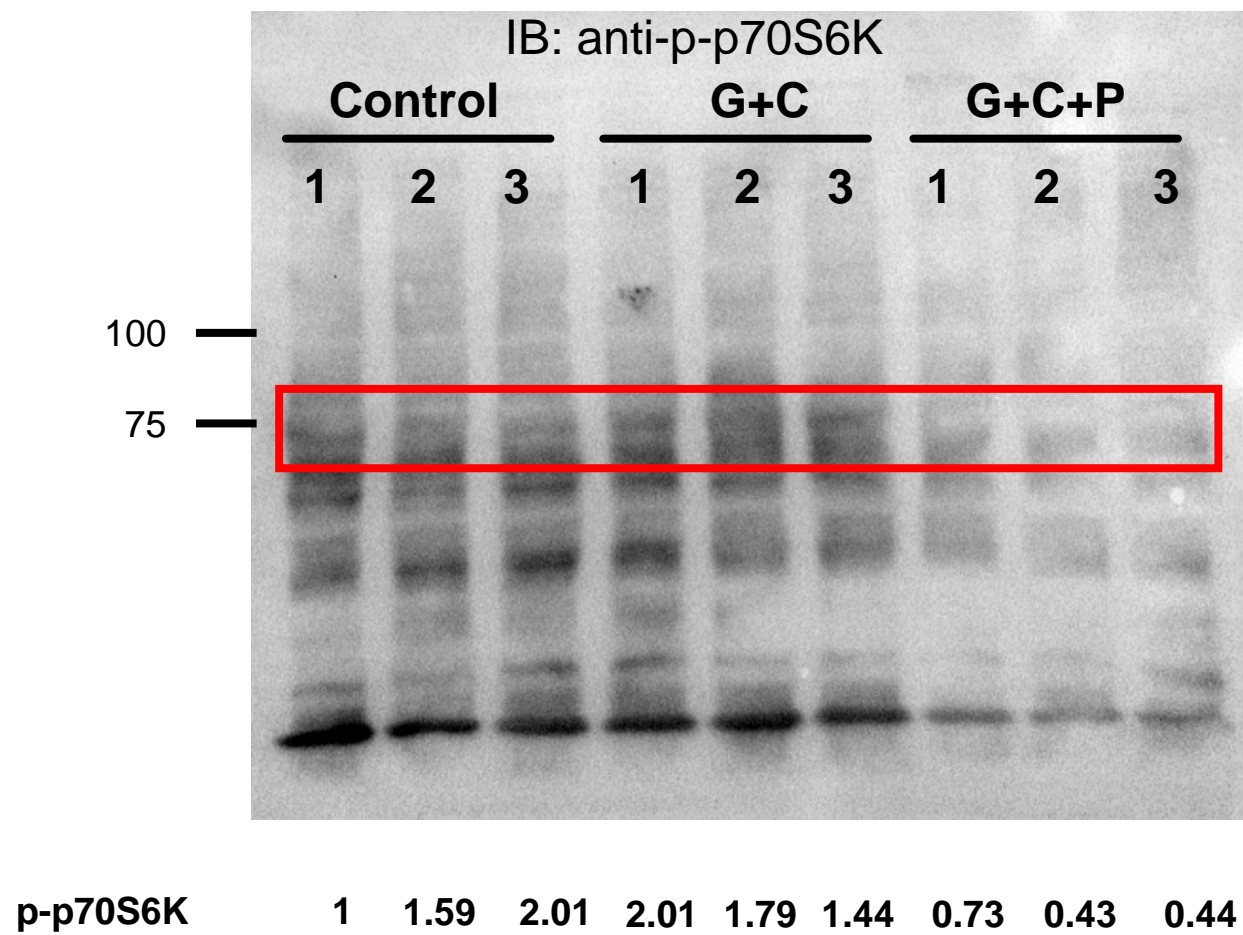


Fig. 6F tumor_p-MEK

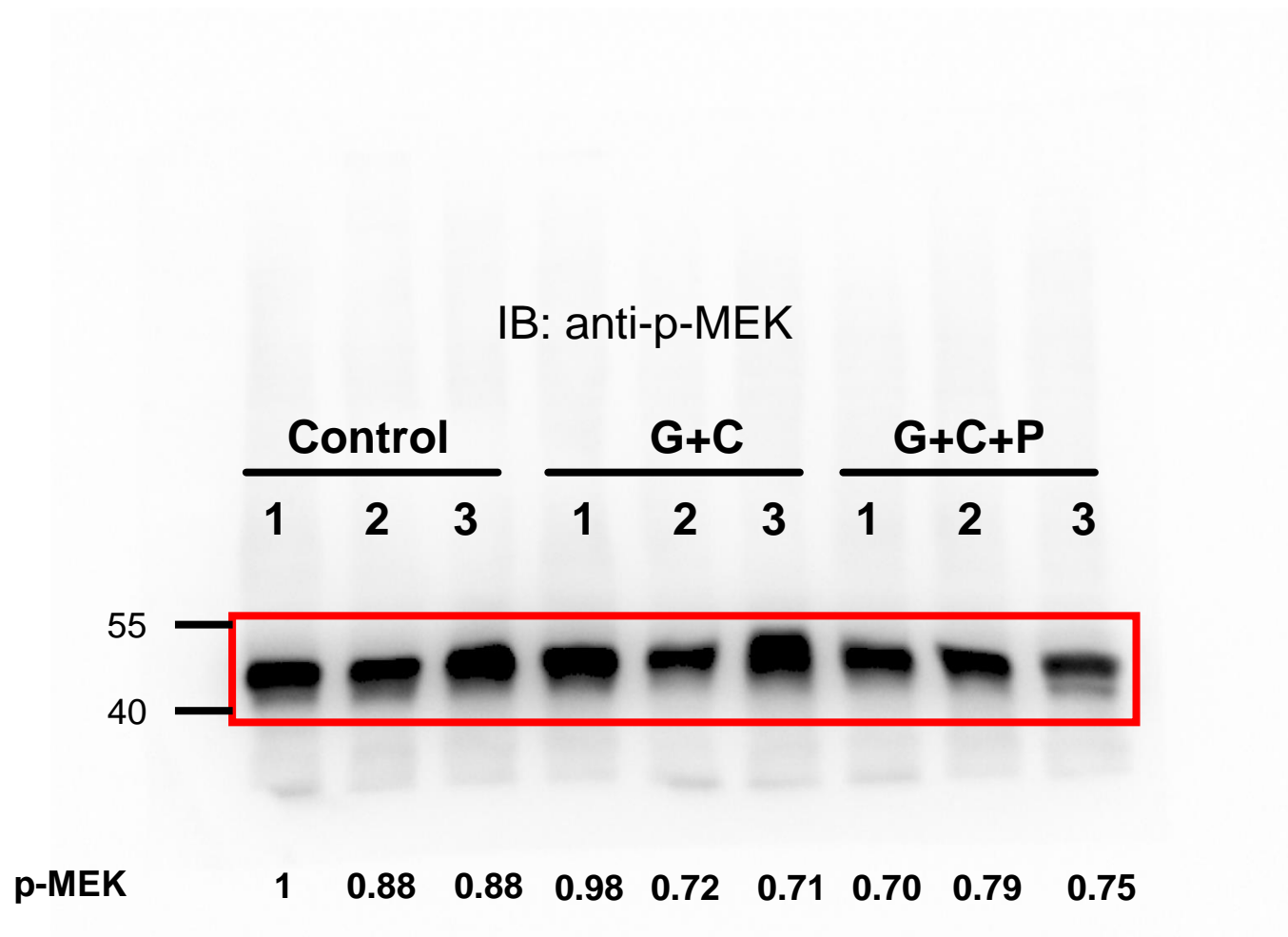


Fig. 6F tumor_p-ERK

IB: anti-p-ERK

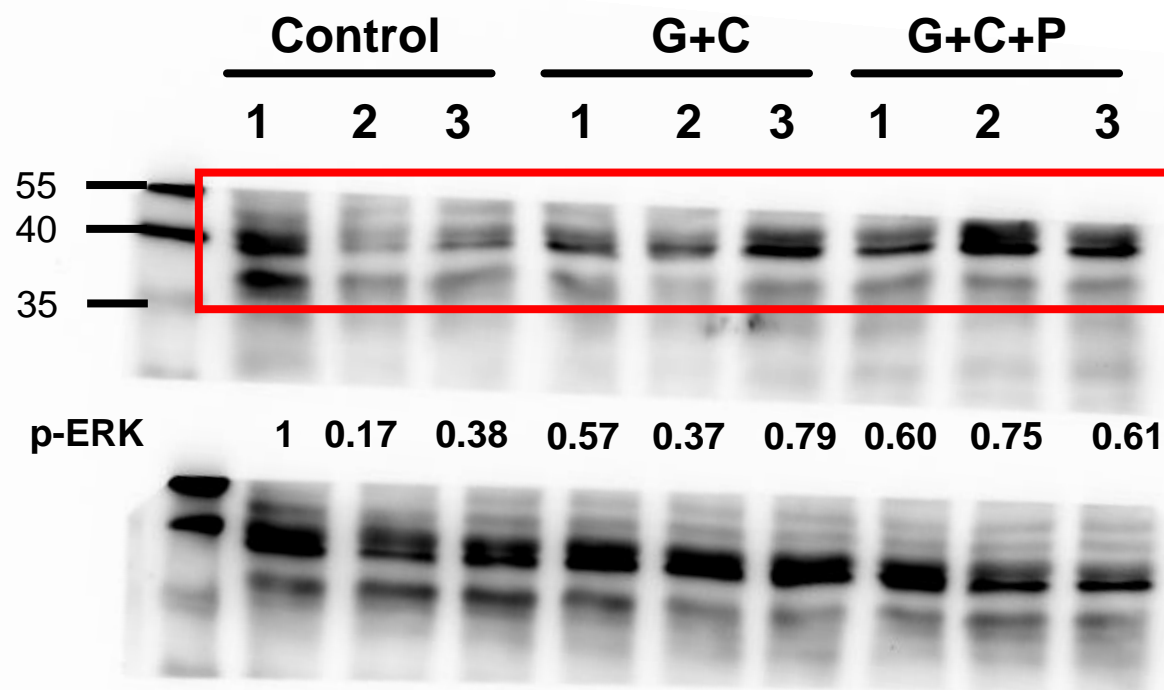


Fig.6F tumor_beta actin

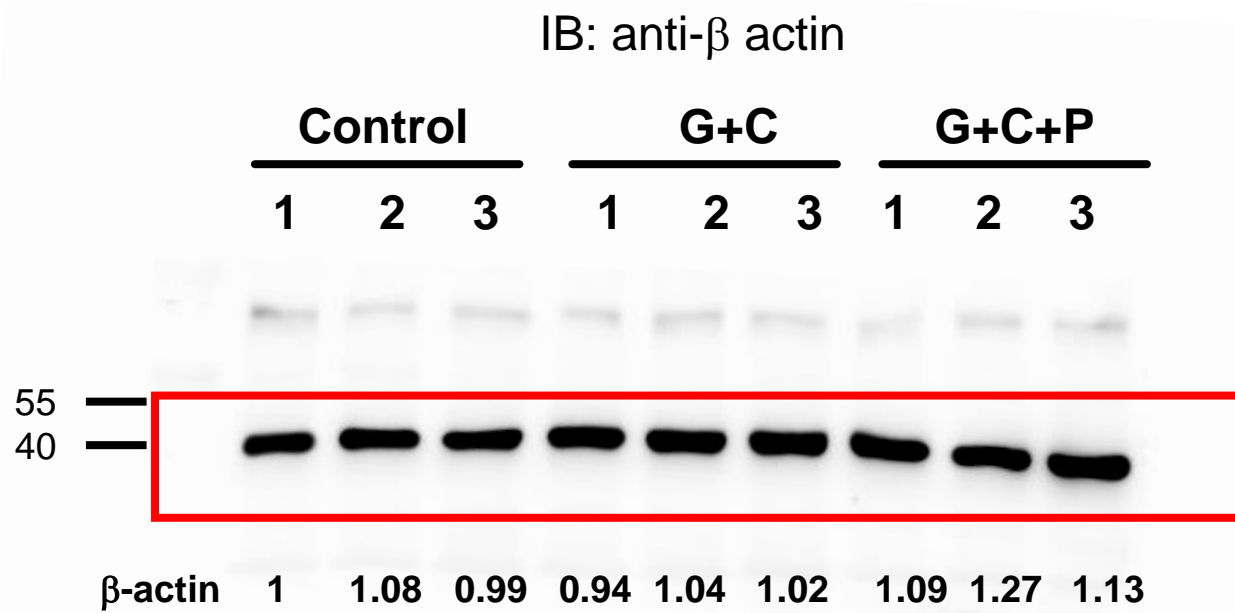


Fig. S8 T24, E7_p-RB

IB: anti-p-RB

T24 E7

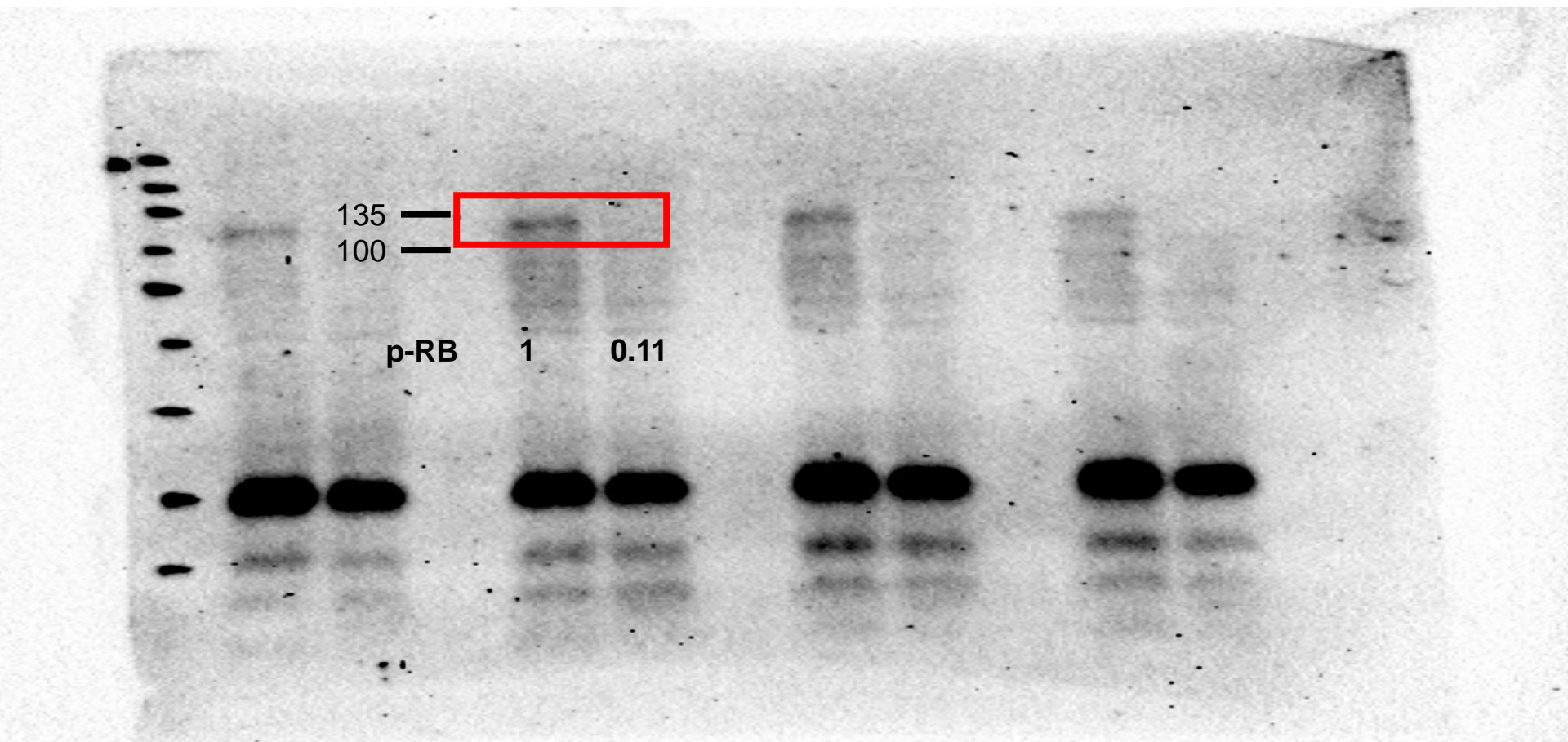


Fig. S8 T24, E7_beta actin (p-RB)

