

Hierarchical Design of CuO/Nickel-Cobalt-Sulfide Electrode by a Facile Two-Step Potentiostatic Deposition

Sa Lv *, Peiyu Geng, Yaodan Chi, Huan Wang, Xuefeng Chu, Yang zhao, Boqi Wu, Wenshi Shang, Chao Wang, Jia Yang, Zhifei Cheng and Xiaotian Yang *

Key Laboratory for Comprehensive Energy Saving of Cold Regions Architecture of Ministry of Education, Jilin Jianzhu University, Changchun 130118, China; gengpeiyu 1@163.com (P.G.); chiyaodan@jlju.edu.cn (Y.C.); wanghuan@jlju.edu.cn (H.W.); stone2009@126.com (X.C.); zhaoy261@163.com (Z.Y.); xiancaitang@sina.com (B.W.); shangws0426@163.com (W.S.); wangchao@jlju.edu.cn (C.W.); yangjia@jlju.edu.cn (J.Y.); chengzf838@163.com (Z.C.)

* Correspondence: lvsa@jlju.edu.cn (S.L.); hanyxt@163.com (X.Y.); Tel.: +86-0431-8456-6181 (S.L.)

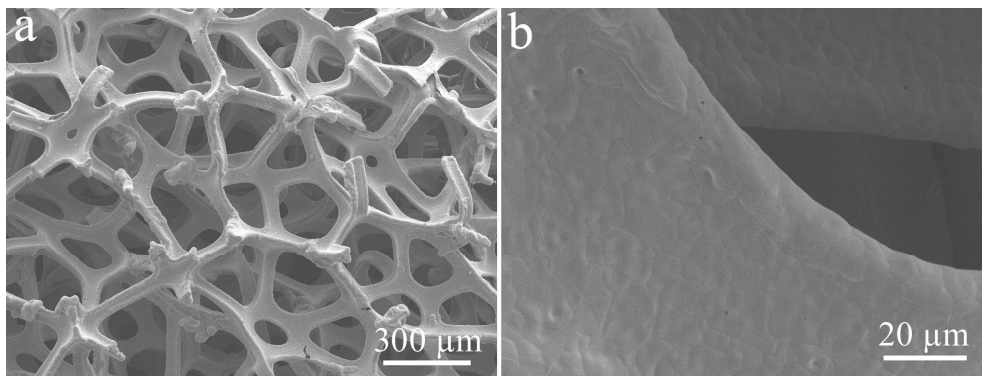


Figure S1. SEM images of bare CF at different magnifications.

The C_s value of CuO/NCS electrode is calculated according to the equation:

$$C_s = \frac{I \times \Delta t}{S \Delta V}$$

where C_s (F cm⁻²) is the specific capacitance, I (A) is the charge and discharge current, Δt (s) is the discharging time, S (cm²) is the effective area of the electrode and ΔV (V) represents the potential drop during discharge.

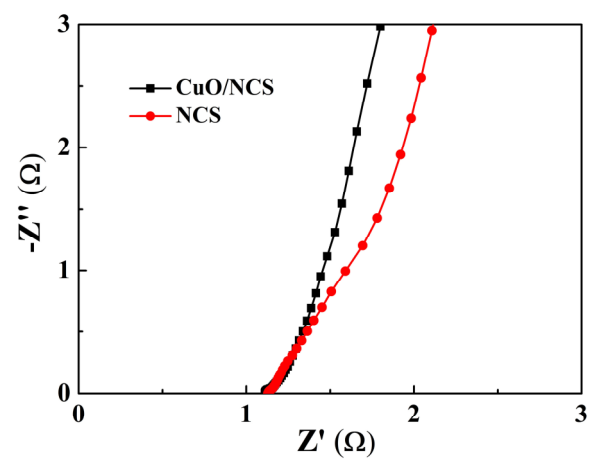


Figure S2. EIS spectra for CuO/NCS and NCS electrodes.