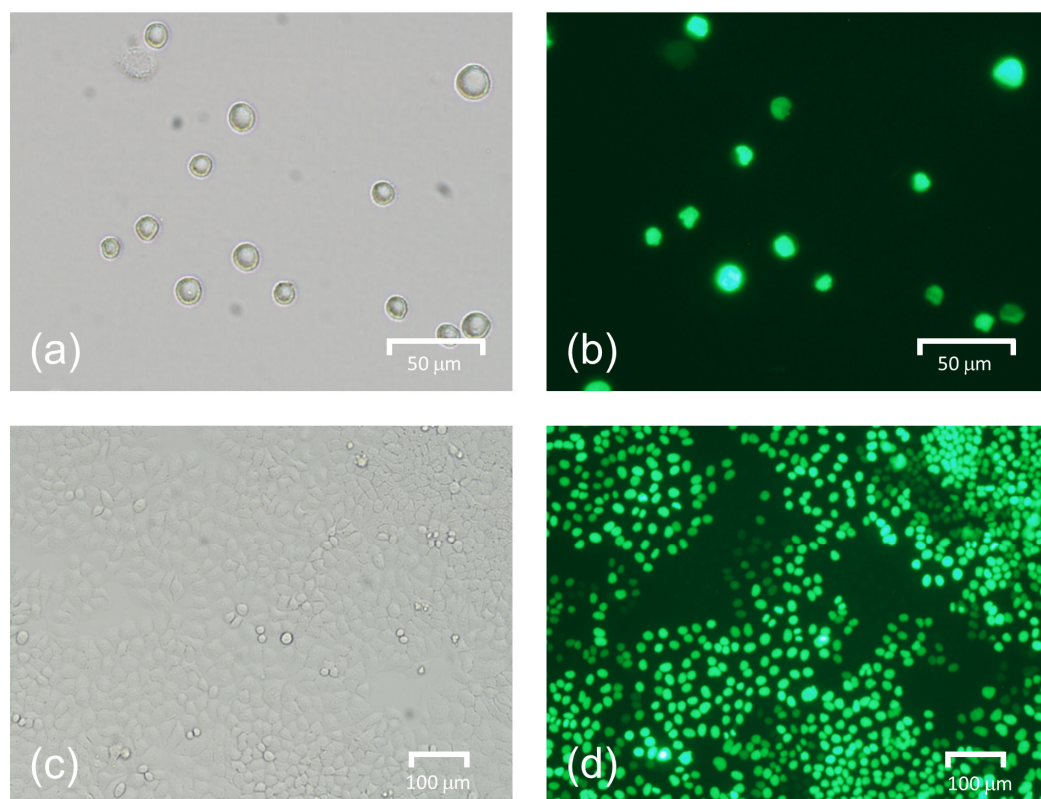


## Supplementary Materials:



**Figure S1.** Images of HeLa-H2B cells used for cell-trapping experiments. The nuclei of HeLa cells were stained green fluorescence. These cells had been treated with histones, which were components of eukaryotic chromosomes with cell nuclei [34,35]. Histones were composed of four types, one of which, H2B, was fused with green fluorescent protein (GFP) to enable fluorescence observation [36]. (a) Bright-field image of HeLa-H2B cells before culture. (b) Fluorescent image of HeLa-H2B cells before culture. (c) Bright-field image of confluent HeLa-H2B cells after culture. (d) Fluorescent image of confluent HeLa-H2B cells after culture.