

Table S1. MRM transitions and collision energies for UHPLC–MS/MS analysis of 15 mycotoxins.

Mycotoxin	Precursor ion (m/z)	Product ion (Quantifier, m/z)	CE (V)	Product ion (Qualifier, m/z)	CE (V)	Retention time (min)	ESI mode
AFB ₁	313.00	285.00	-24	241.00	-38	4.7	+
AFB ₂	315.00	259.00	-30	287.00	-27	4.5	+
AFG ₁	329.00	243.00	-29	311.00	-29	4.4	+
AFG ₂	331.00	245.00	-31	257.00	-31	4.2	+
DON	297.15	249.10	-11	231.10	-12	2.7	+
FB ₁	722.40	352.30	-34	334.15	-41	4.8	+
FB ₂	706.40	336.25	-42	318.25	-41	5.3	+
T-2	489.05	245.05	-25	326.95	-22	5.4	+
HT-2	447.10	285.10	-20	105.10	-48	5.1	+
OTA	404.10	239.00	-22	358.10	-13	5.7	+
ZEN	317.10	175.20	24	131.10	29	5.8	–
ZAN	319.37	275.25	22	205.20	23	5.7	–
α -ZEL	319.15	160.15	32	130.05	35	5.7	–
β -ZEL	319.15	160.15	31	130.05	35	5.7	–
β -ZAL	321.15	277.20	23	107.05	34	5.2	–

Table S2. Sampling of Coix Seed, Malt, Lotus Seed and Lillii Bulbus from their main producing area in China.

Province	No. of sample	Mean temperature (°C)	Mean relative humidity (%)	Latitudes (N)
Heilongjiang	9	4.0	70	43°26'~53°33'
Hebei	25	14.2	62	36°01'~42°37'
Gansu	5	14.8	56	32°31'~42°57'
Jiangsu	6	16.8	76	30°45'~35°08'
Anhui	16	17.2	77	29°41'~34°38'
Fujian	5	20.6	77	23°30'~28°22'
Jiangxi	5	17.7	78	24°29'~30°04'
Hunan	10	18.5	79	24°38'~30°08'
Guizhou	32	16.4	80	24°37'~29°13'
Sichuan	5	15.4	79	26°03'~34°19'
Yunnan	9	15.0	74	21°08'~29°15'
Total	127			

Table S3. Concentrations of the mixed standard working solutions of 15 mycotoxins.

Mycotoxin	Concentration (ng/mL)					
	1	2	3	4	5	6
AFB ₁	0.25	0.5	1	2.5	5	10
AFB ₂	0.075	0.15	0.3	0.75	1.5	3
AFG ₁	0.25	0.5	1	2.5	5	10
AFG ₂	0.075	0.15	0.3	0.75	1.5	3
DON	37.5	75	150	375	750	1500
FB ₁	5	10	20	50	100	200
FB ₂	2.5	5	10	25	50	100
T-2	0.5	1	2	5	10	20
HT-2	2.5	5	10	25	50	100
OTA	0.5	1	2	5	10	20
ZEN	5	10	20	50	100	200
ZAN	5	10	20	50	100	200
α -ZEL	5	10	20	50	100	200
β -ZEL	5	10	20	50	100	200
β -ZAL	5	10	20	50	100	200

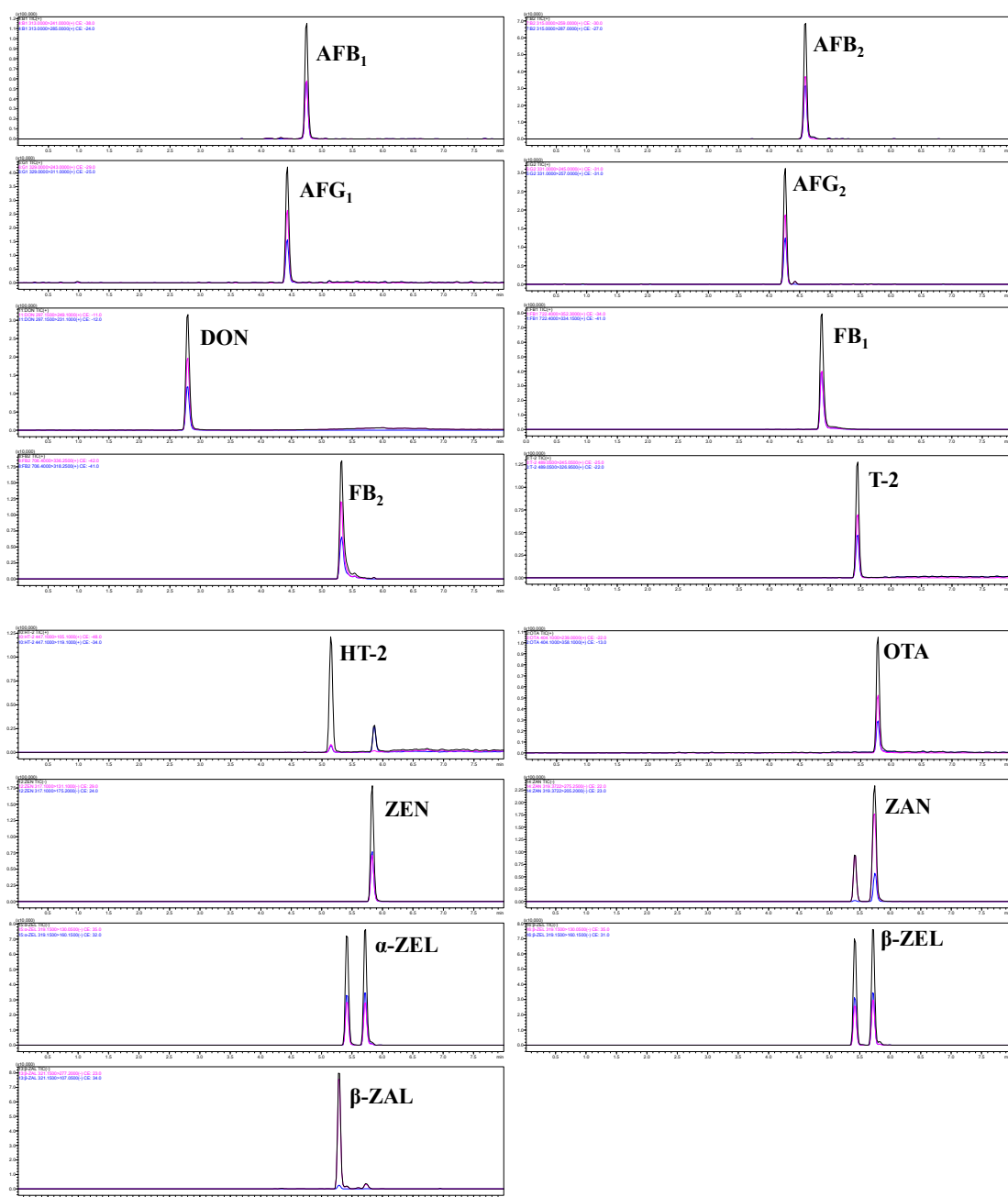


Figure S1. UHPLC–MS/MS chromatograms of 15 mycotoxins: AFB₁ and AFG₁, 10 ng/mL; AFB₂ and AFG₂, 3 ng/mL; DON, 500 ng/mL; FB₁, FB₂, HT-2, ZEN, ZAN, α-ZEL, β-ZEL and β-ZAL, 200 ng/mL; T-2 and OTA, 20 ng/mL.