

Supplementary Materials: Patterns of Diversity of *Fusarium* Fungi Contaminating Soybean Grains

Maciej Żelechowski, Tomasz Molcan, Katarzyna Bilka, Kamil Myszczyński, Jacek Olszewski, Krzysztof Karpiesiuk, Joanna Wyrębek and Tomasz Kulik

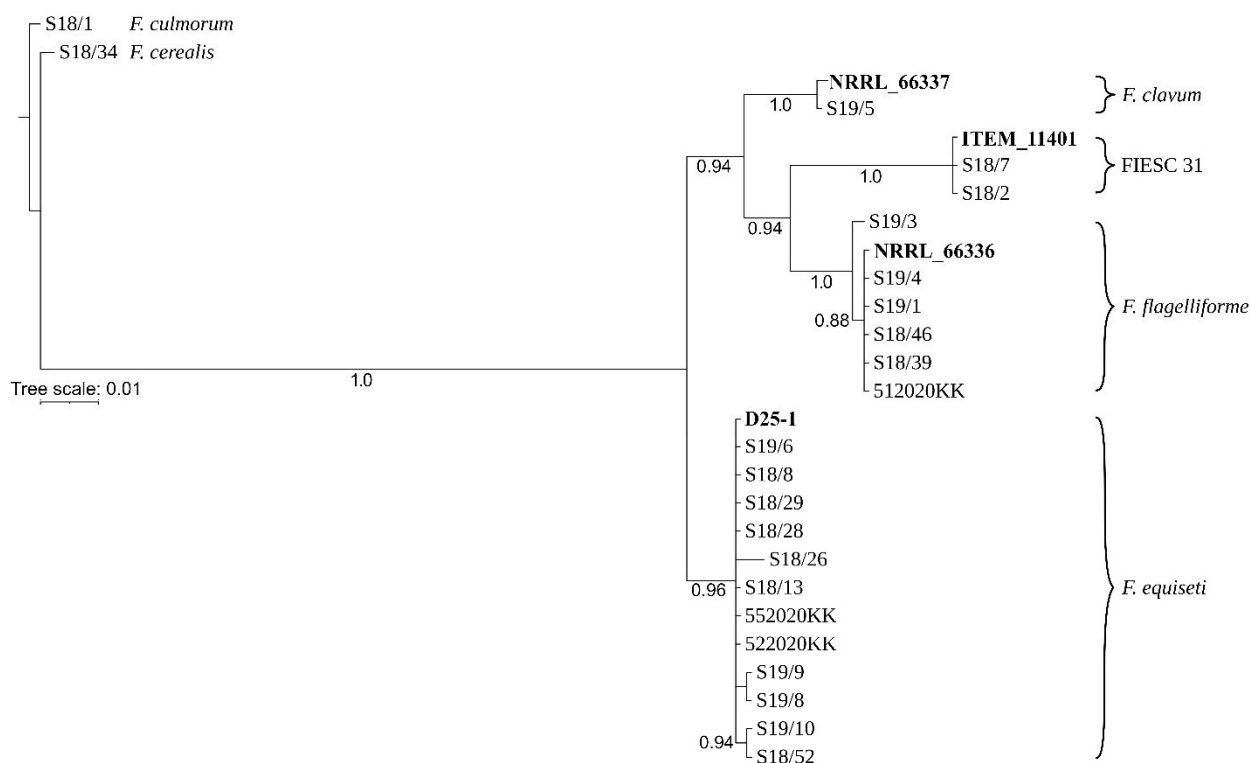


Figure S1. Bayesian inference phylogeny from *tef-1α* sequences of isolates from Equiseti clade.

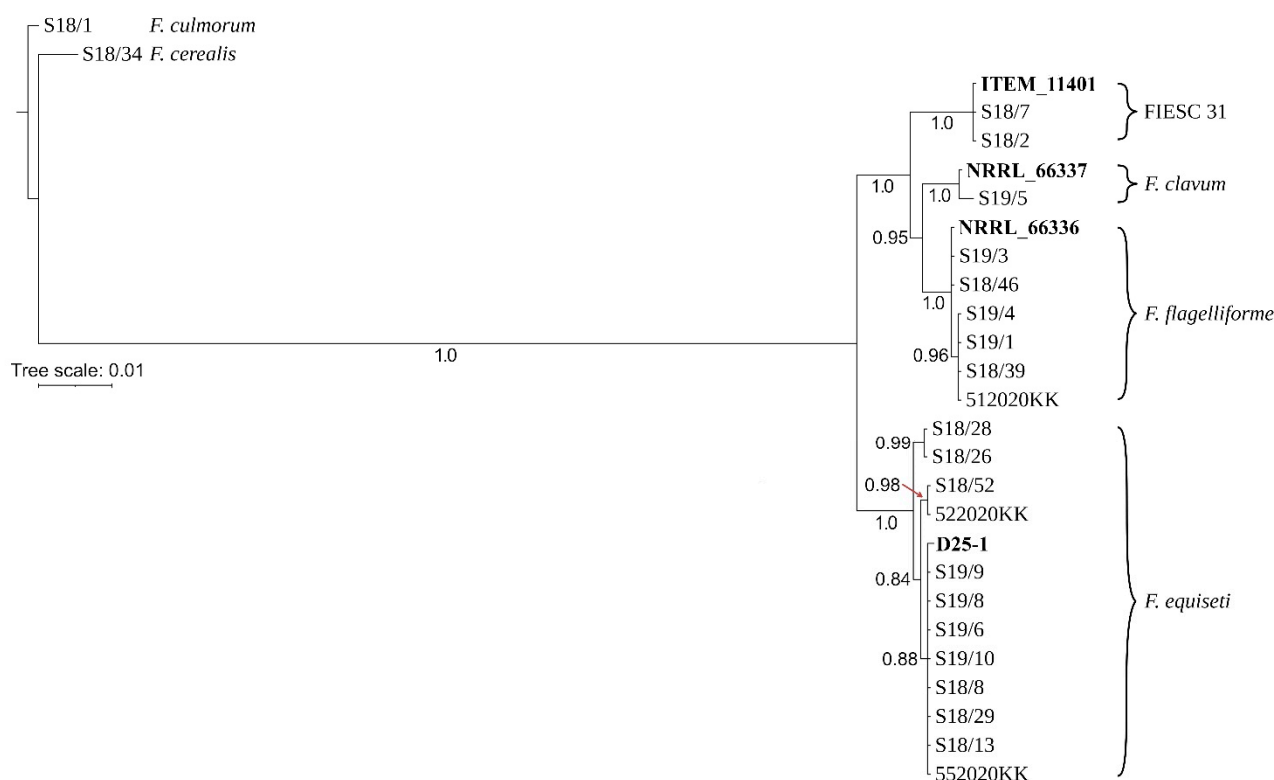


Figure S2. Bayesian inference phylogeny from *rpb1* sequences of isolates from Equiseti clade.

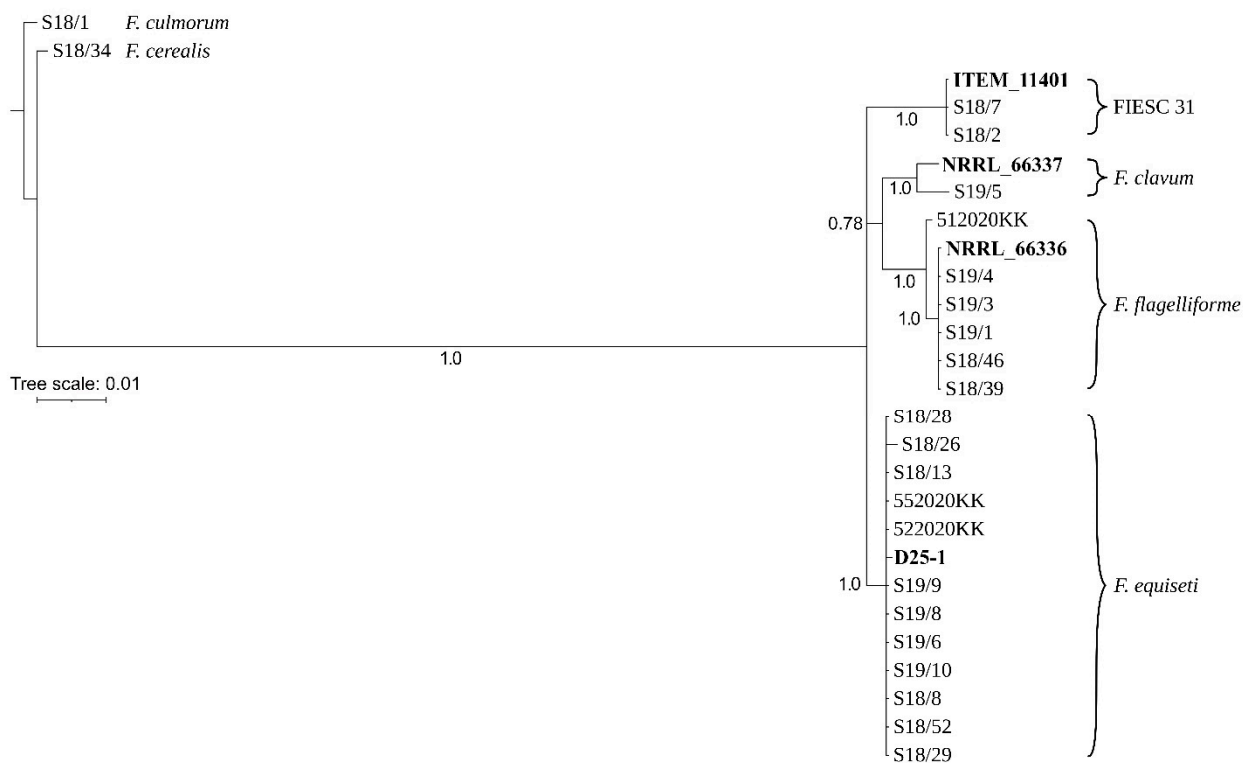


Figure S3. Bayesian inference phylogeny from *rpb2* sequences of isolates from Equiseti clade.

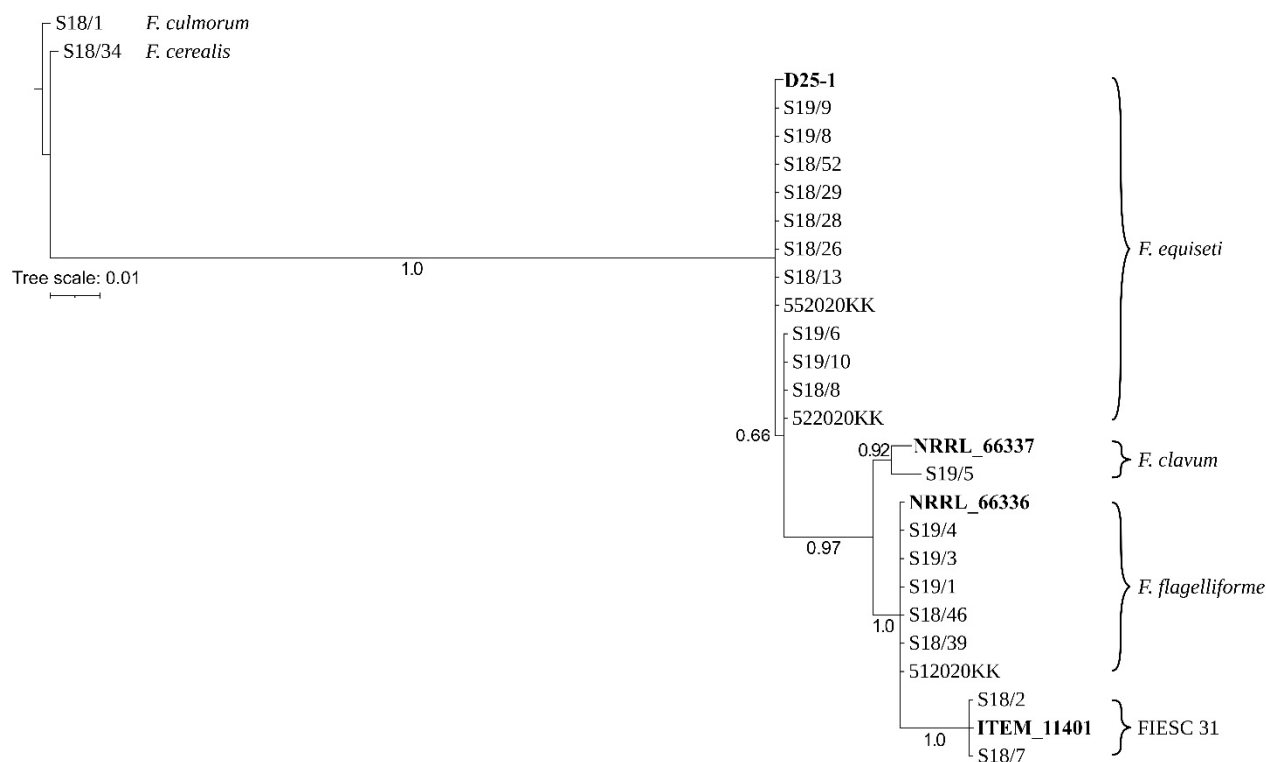


Figure S4. Bayesian inference phylogeny from *cam* sequences of isolates from Equiseti clade.

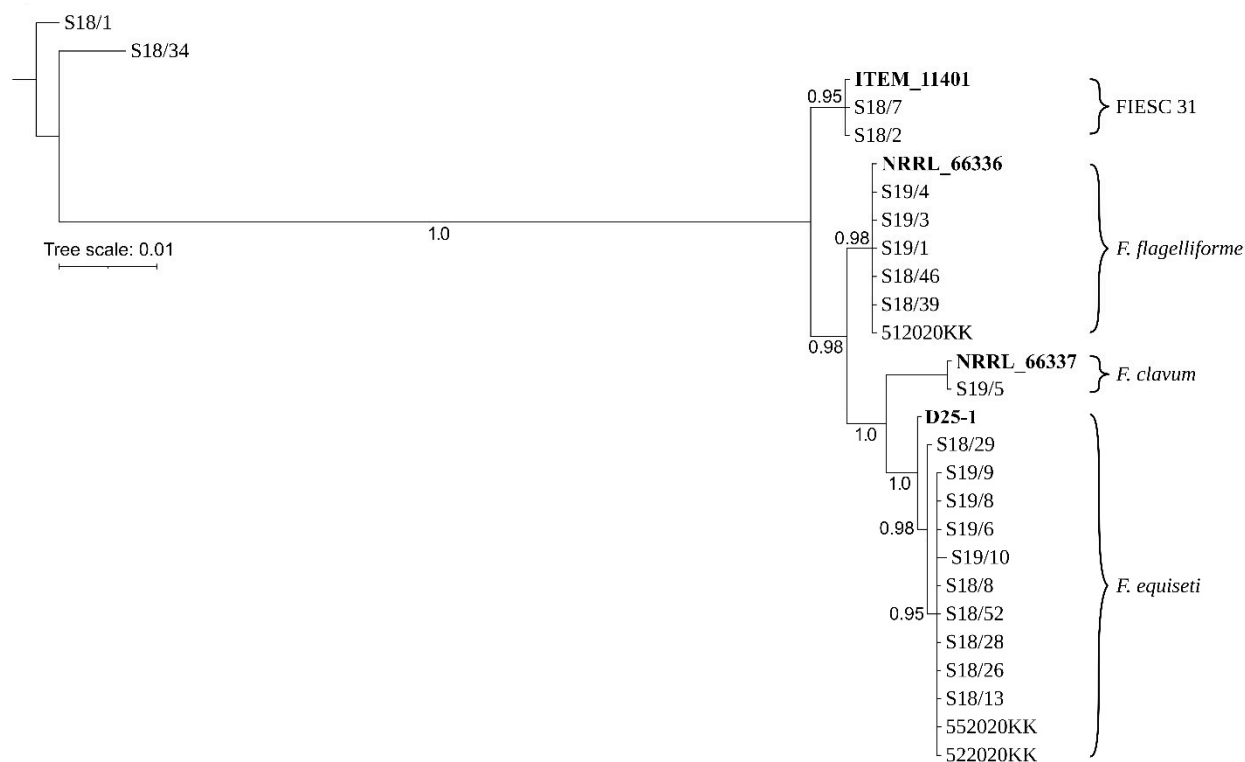


Figure S5. Bayesian inference phylogeny from *tub2* sequences of isolates from Equiseti clade.

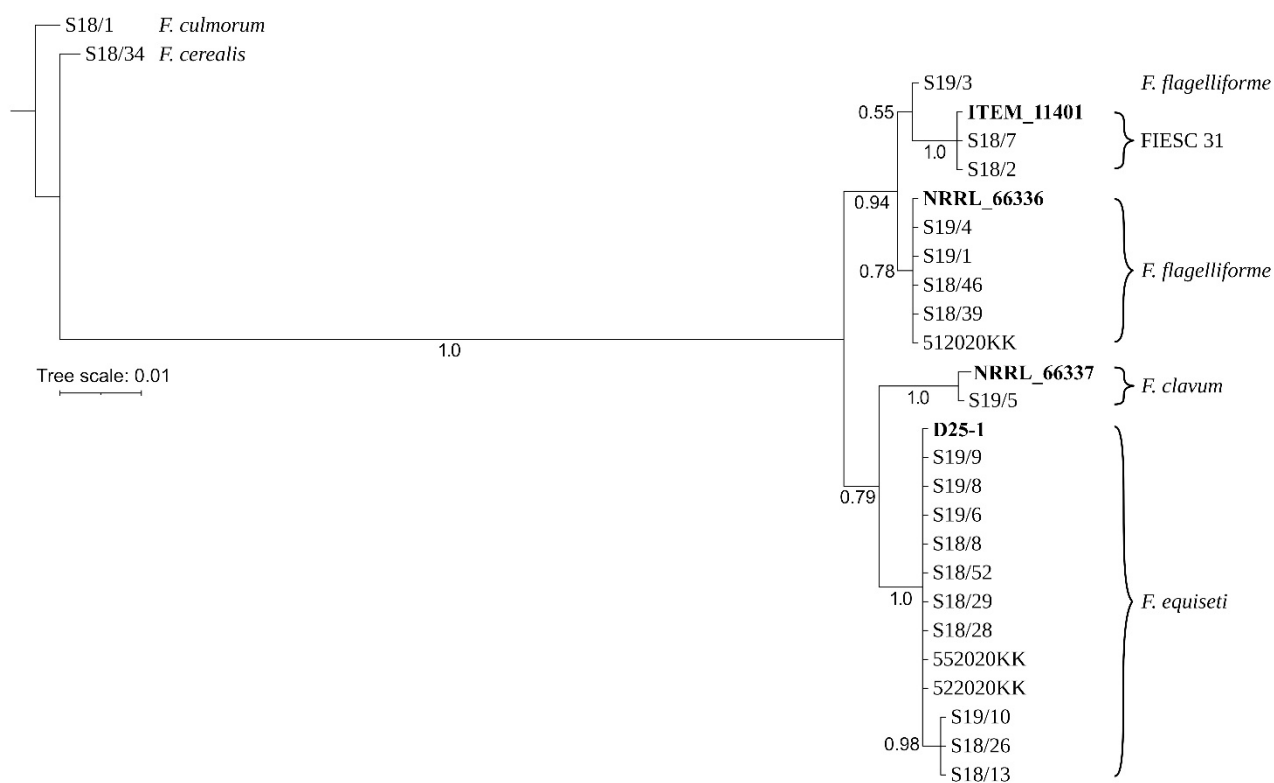


Figure S6. Bayesian inference phylogeny from *top1* sequences of isolates from Equiseti clade.

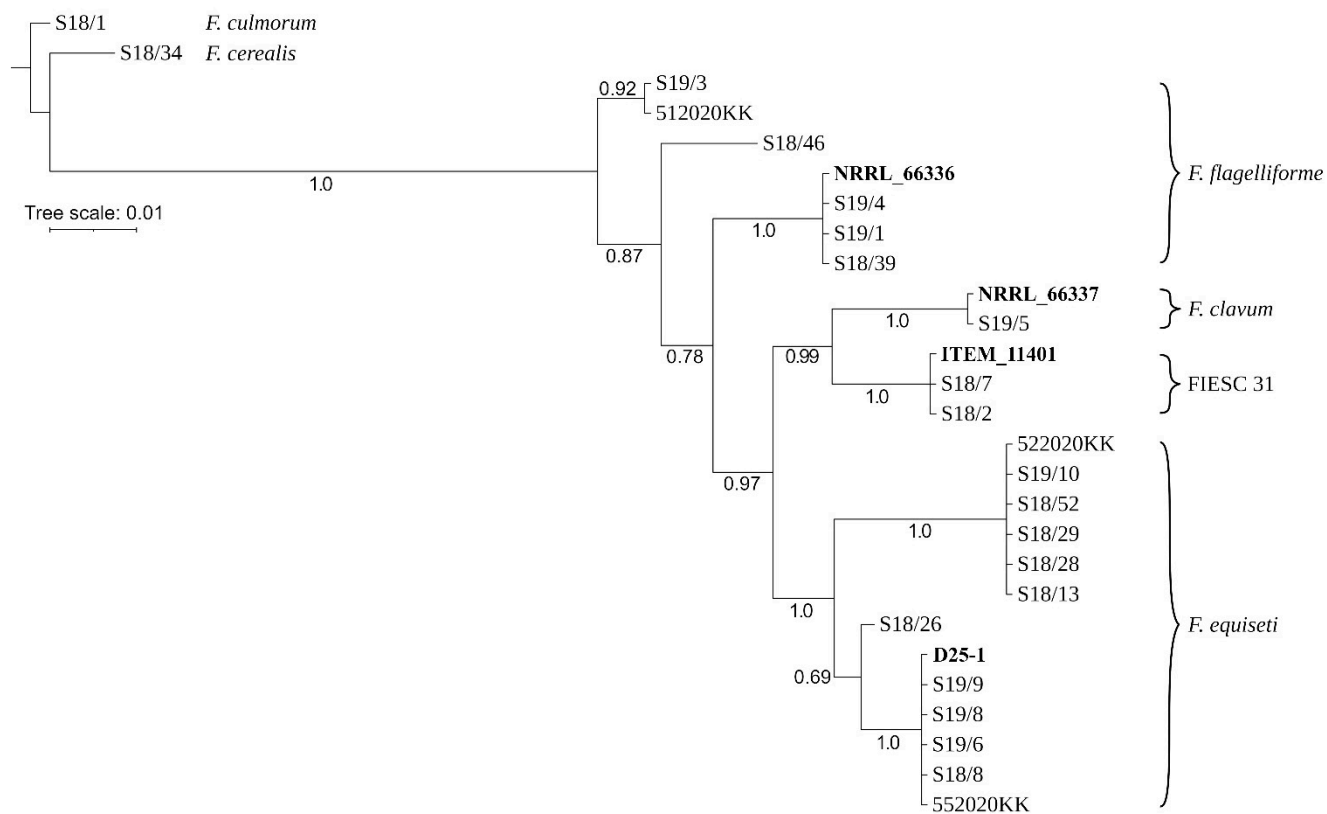


Figure S7. Bayesian inference phylogeny from *pgk* sequences of isolates from Equiseti clade.

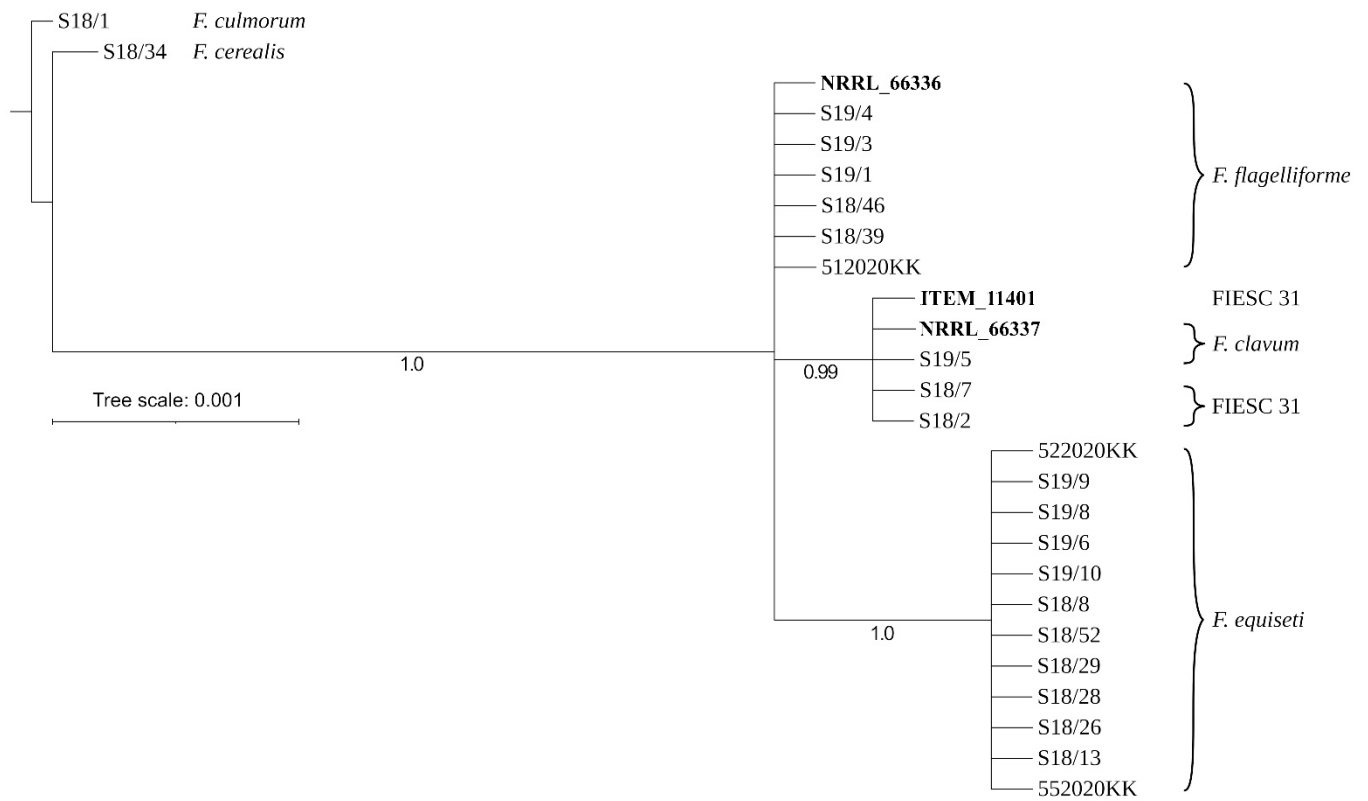


Figure S8. Bayesian inference phylogeny from *lsu* sequences of isolates from Equiseti clade.