

Supplemental Table S1. Samples IDs in 96-well plates (Note that some samples are redundant)

	1	2	3	4	5	6	7	8	9	10	11	12
A	1H	2H	3H	4H	5H	6H	7H					
B	1D	2D	3D	4D	5D	6D	7D					
C	1B	2B	3B	4B	5B	6B	7B					
D	1A	2A	3A	4A	5A	6A	7A					
	1	2	3	4	5	6	7	8	9	10	11	12
A	1H	2H	3H	4H	5H	6H	7H	8H	9H	10H	11H	12H
B	1D	2D	3D	4D	5D	6D	7D	8D	9D	10D	11D	12D
C	1B	2B	3B	4B	5B	6B	7B	8B	9B	10B	11B	12B
D	1A	2A	3A	4A	5A	6A	7A	8A	9A	10A	11A	12A
E	13H	14H	15H	16H	17H	18H	19H	20H	21H	22H	23H	24H
F	13D	14D	15D	16D	17D	18D	19D	20D	21D	22D	23D	24D
G	13B	14B	15B	16B	17B	18B	19B	20B	21B	22B	23B	24B
H	13A	14A	15A	16A	17A	18A	19A	20A	21A	22A	23A	24A
	1	2	3	4	5	6	7	8	9	10	11	12
A	25H	26H	27H	28H	29H	30H	31H	32H	33H	34H	35H	36H
B	25D	26D	27D	28D	29D	30D	31D	32D	33D	34D	35D	36D
C	25B	26B	27B	28B	29B	30B	31B	32B	33B	34B	35B	36B
D	25A	26A	27A	28A	29A	30A	31A	32A	33A	34A	35A	36A
E	37H	38H	39H	40H	41H	42H	43H	44H	45H	46H	47H	48H
F	37D	38D	39D	40D	41D	42D	43D	44D	45D	46D	47D	48D
G	37B	38B	39B	40B	41B	42B	43B	44B	45B	46B	47B	48B
H	37A	38A	39A	40A	41A	42A	43A	44A	45A	46A	47A	48A
	1	2	3	4	5	6	7	8	9	10	11	12
A	49H	50H	51H	52H	53H	54H	55H	56H	57H	58H	59H	60H
B	49D	50D	51D	52D	53D	54D	55D	56D	57D	58D	59D	60D
C	49B	50B	51B	52B	53B	54B	55B	56B	57B	58B	59B	60B
D	49A	50A	51A	52A	53A	54A	55A	56A	57A	58A	59A	60A
E	61H	62H	63H	64H	65H	66H	67H	68H	69H	70H	123H	124H
F	61D	62D	63D	64D	65D	66D	67D	68D	69D	70D	123D	124D
G	61B	62B	63B	64B	65B	66B	67B	68B	69B	70B	123B	124B
H	61A	62A	63A	64A	65A	66A	67A	68A	69A	70A	123A	124A

Sample IDs and corresponding herbs

	Genus	Species	Authority	Family	Part
1	<i>Ruscus</i>	<i>hyrcanus</i>	Woronow	Asparagaceae	LF+FR
2	<i>Hypericum</i>	<i>androsæmum</i>	L.	Clusiaceae	PL
3	<i>Dryopteris</i>	<i>raddeana</i>	(Fomin) Fomin	Dryopteridaceae	LF
4	<i>Buxus</i>	<i>hyrcana</i>	Pojark.	Buxaceae	RT
5	<i>Buxus</i>	<i>hyrcana</i>	Pojark.	Buxaceae	ST
6	<i>Polygonum</i>	<i>hydropiper</i>	L.	Polygonaceae	PL
7	<i>Solanum</i>	<i>dulcamara</i>	L.	Solanaceae	ST+RT

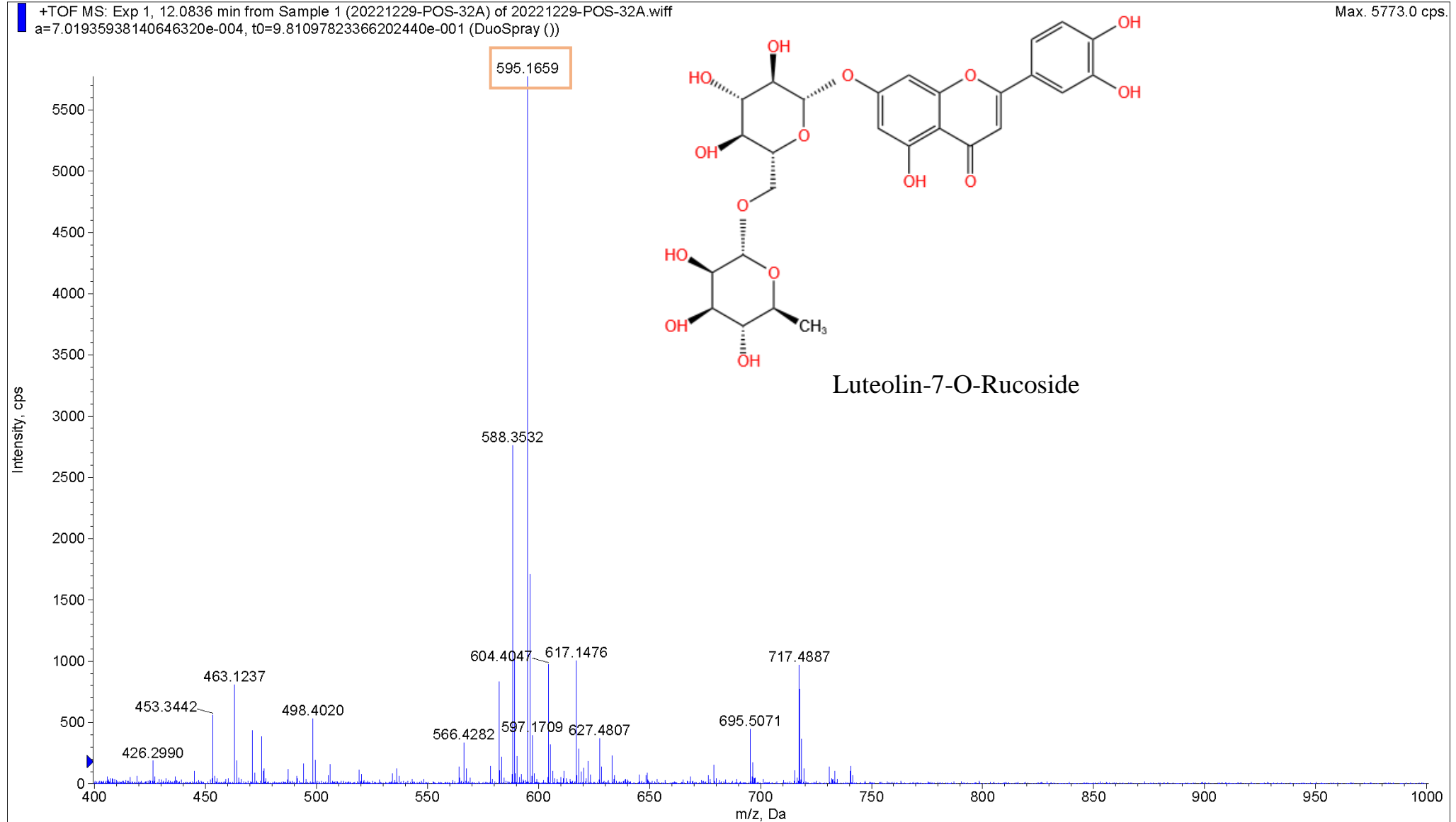
8	<i>Solanum</i>	<i>dulcamara</i>	L.	Solanaceae	LF+FL+FR
9	<i>Carex</i>	<i>sylvatica</i>	Huds.	Cyperaceae	PL
10	<i>Crataegus</i>	<i>microphylla</i>	K. Koch	Rosaceae	ST
11	<i>Crataegus</i>	<i>microphylla</i>	K. Koch	Rosaceae	LF
12	<i>Scrophularia</i>	<i>cinerascens</i>	Boiss.	Scrophulariaceae	ST+RT
13	<i>Scrophularia</i>	<i>cinerascens</i>	Boiss.	Scrophulariaceae	LF+FL+FR
14	<i>Zelkova</i>	<i>carpinifolia</i>	(Pall.) K. Koch	Ulmaceae	ST
15	<i>Astragalus</i>	<i>igniarius</i>	Popov	Fabaceae	ST+RT
16	<i>Chaerophyllum</i>	<i>bulbosum</i>	L.	Apiaceae	PL
17	<i>Pimpinella</i>	<i>peregrina</i>	L.	Apiaceae	PL
18	<i>Spiraea</i>	<i>crenata</i>	L.	Rosaceae	PL
19	<i>Hypericum</i>	<i>scabrum</i>	L.	Clusiaceae	PL
20	<i>Aethionema</i>	<i>armenum</i>	Boiss.	Brassicaceae	PL
21	<i>Achillea</i>	<i>biebersteinii</i>	Afan.	Asteraceae	PL
22	<i>Eremostachys</i>	<i>macrophylla</i>	Montbret &	Lamiaceae	PL
23	<i>Glycyrrhiza</i>	<i>glabra</i>	L.	Fabaceae	PL
24	<i>Camphorosma</i>	<i>lessingii</i>	Litv.	Chenopodiaceae	PL
25	<i>Capparis</i>	<i>herbacea</i>	Willd.	Capparaceae	PL
26	<i>Astracantha</i>	<i>microcephala</i>	(Willd.) Poldach.	Fabaceae	PL
27	<i>Chardinia</i>	<i>orientalis</i>	(L.) Kuntze	Asteraceae	PL
28	<i>Thalictrum</i>	<i>minus</i>	L.	Ranunculaceae	PL
29	<i>Thymus</i>	<i>kotschyannus</i>	Boiss. & Hohen.	Lamiaceae	PL
30	<i>Echium</i>	<i>russicum</i>	J. F. Gmel.	Boraginaceae	PL
31	<i>Galium</i>	<i>verum</i>	L.	Rubiaceae	PL
32	<i>Veratrum</i>	<i>lobelianum</i>	Bernh.	Melanthiaceae	PL
33	<i>Caltha</i>	<i>polypetalaa</i>	Hochst.	Ranunculaceae	PL
34	<i>Mentha</i>	<i>longifolia</i>	(L.) Huds.	Lamiaceae	PL
35	<i>Scrophularia</i>	<i>orientalis</i>	L.	Scrophulariaceae	PL
36	<i>Lappula</i>	<i>patula</i>	(Lehm.) Aschers.	Boraginaceae	LF+FL+FR
37	<i>Galium</i>	<i>ruthenicum</i>	Willd.	Rubiaceae	ST+RT
38	<i>Oberna</i>	<i>multifida</i>	(Adams) Ikonn.	Caryophyllaceae	PL
39	<i>Artemisia</i>	<i>lercheana</i>	Weber	Asteraceae	ST+RT
40	<i>Artemisia</i>	<i>lercheana</i>	Weber	Asteraceae	LF+FL

41	<i>Echium</i>	<i>biebersteini</i>	(Lacaita) Dobrocz.	Boraginaceae	ST+RT
42	<i>Juniperus</i>	<i>oblonga</i>	M. Bieb.	Cupressaceae	RT
43	<i>Juniperus</i>	<i>oblonga</i>	M. Bieb.	Cupressaceae	LF+FR
44	<i>Juniperus</i>	<i>oblonga</i>	M. Bieb.	Cupressaceae	ST
45	<i>Cruciata</i>	<i>articulata</i>	(L.) Ehrend.	Rubiaceae	PL
46	<i>Symphytum</i>	<i>caucasicum</i>	M. Bieb.	Boraginaceae	PL
47	<i>Ambrosia</i>	<i>artemisiifolia</i>	L.	Asteraceae	LF+FL
48	<i>Ambrosia</i>	<i>artemisiifolia</i>	L.	Asteraceae	RT
49	<i>Ambrosia</i>	<i>artemisiifolia</i>	L.	Asteraceae	ST
50	<i>Stachys</i>	<i>lavandulifolia</i>	Vahl	Lamiaceae	PL
51	<i>Zygophyllum</i>	<i>fabago</i>	L.	Zygophyllaceae	PL
52	<i>Elaeagnus</i>	<i>orientalis</i>	L.	Elaeagnaceae	PL
53	<i>Lepidium</i>	<i>vesicarium</i>	L.	Brassicaceae	PL
54	<i>Rhamnus</i>	<i>pallasii</i>	Fisch. & C. A. Mey.	Rhamnaceae	PL
55	<i>Atraphaxis</i>	<i>spinosa</i>	L.	Polygonaceae	PL
56	<i>Onobrychis</i>	<i>cornuta</i>	(L.) Desv.	Fabaceae	PL
57	<i>Geranium</i>	<i>tuberosum</i>	L.	Geraniaceae	PL
58	<i>Crataegus</i>	<i>orientalis</i>	Pall. ex M. Bieb.	Rosaceae	LF
59	<i>Primula</i>	<i>macrocalyx</i>	Bunge	Primulaceae	PL
60	<i>Caccinia</i>	<i>macranthes</i>	(Banks & S.	Boraginaceae	PL
61	<i>Scutellaria</i>	<i>orientalis</i>	L.	Lamiaceae	PL
62	<i>Symphytum</i>	<i>asperum</i>	Lepech.	Boraginaceae	PL
63	<i>Melandrium</i>	<i>album</i>	(Mill.) Garcke	Caryophyllaceae	PL
64	<i>Cardaria</i>	<i>boissieri</i>	(N. Busch) Soó	Brassicaceae	PL
65	<i>Euphorbia</i>	<i>macroceras</i>	Fisch. & C.A	Euphorbiaceae	PL
66	<i>Amberboa</i>	<i>moschata</i>	(L.) DC.	Asteraceae	PL
67	<i>Erodium</i>	<i>oxyrhynchum</i>	M. Bieb.	Geraniaceae	PL
68	<i>Anchusa</i>	<i>azurea</i>	Mill.	Boraginaceae	PL
69	<i>Xerophyllum</i>	<i>tenax</i>	(Pursh) Nutt.	Melanthiaceae	RT+RHZ
70	<i>Torenia</i>	<i>sp.</i>		Scrophulariaceae	PL
123	<i>Metrosideros</i>	<i>polymnorpha</i>		Myrtaceae	LF
124	<i>Artocarpus</i>	<i>altilis</i>		Moraceae	LF

125	<div>Metrosideros</div>	<div>polymorpha</div>	Myrtaceae	ST
126	<div>Artocarpus</div>	<div>altilis</div>	Moraceae	ST
127	<div>Curcuma</div>	<div>longa</div>	Zingiberaceae	RHZ

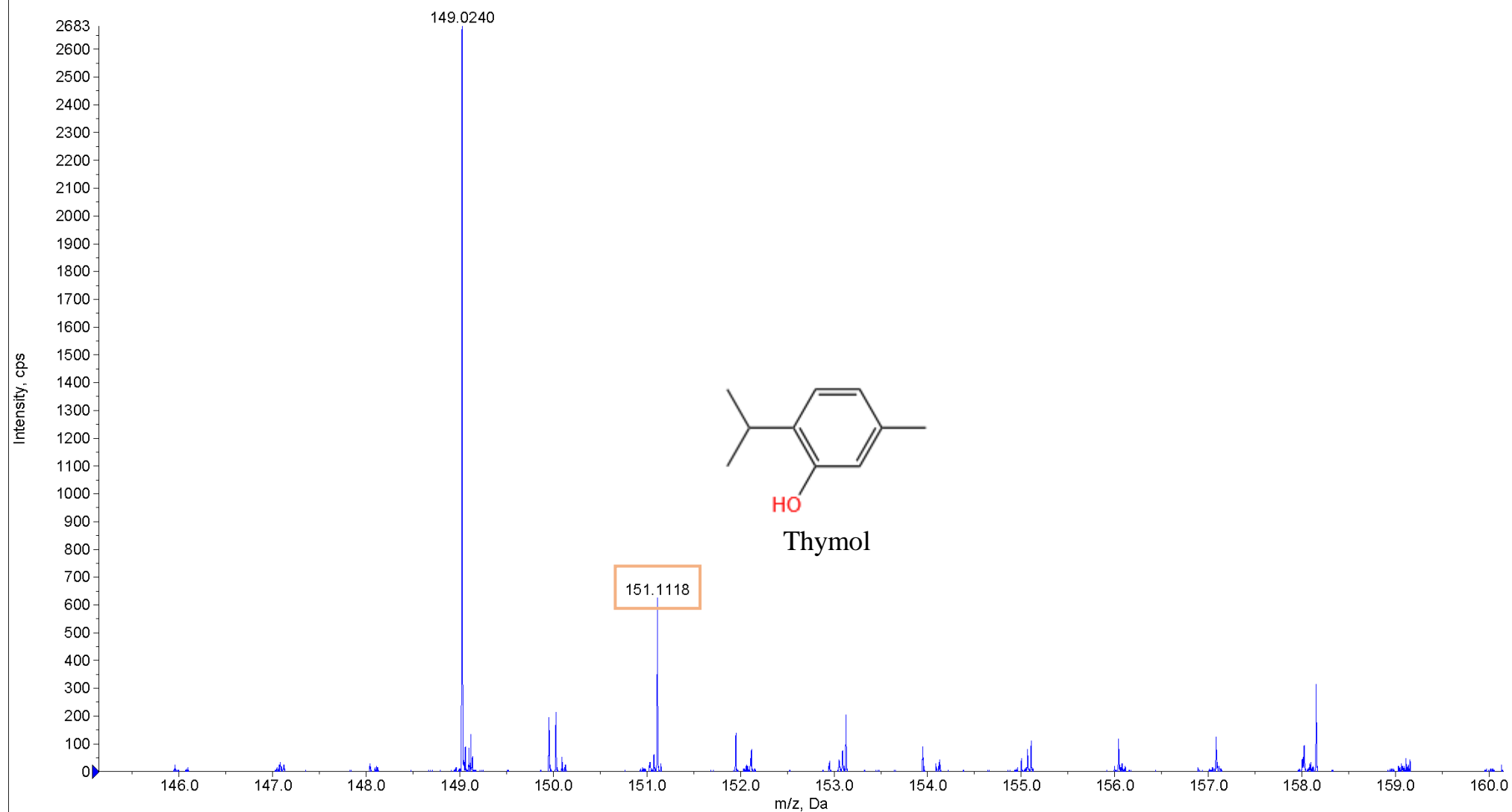
# Supplemental Figure S1. Compounds found in *Veratrum lobelianum* and *Onobrychis cornuta* extracts

Compounds found in *Veratrum lobelianum* and *Onobrychis cornuta* extracts. The x-axis in an LC-MS graph represents the mass-to-charge ratio ( $m/z$ ). The y-axis represents intensity in counts per second (cps).



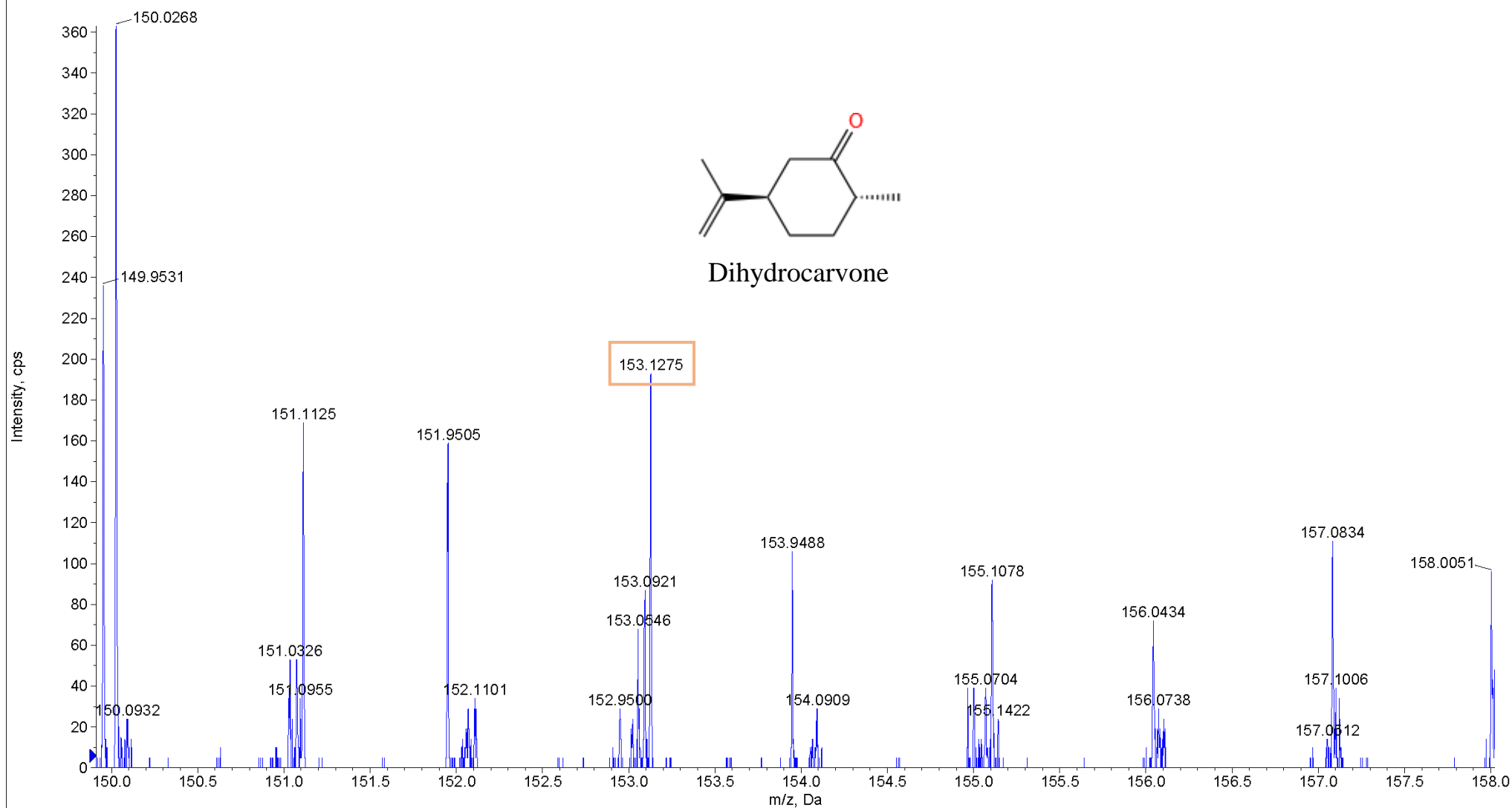
+TOF MS: Exp 1, 20.5983 min from Sample 1 (20221229-POS-32A) of 20221229-POS-32A.wiff  
a=7.01935809864076620e-004, t0=9.78813400165637120e-001 (DuoSpray ())

Max. 3696.0 cps.



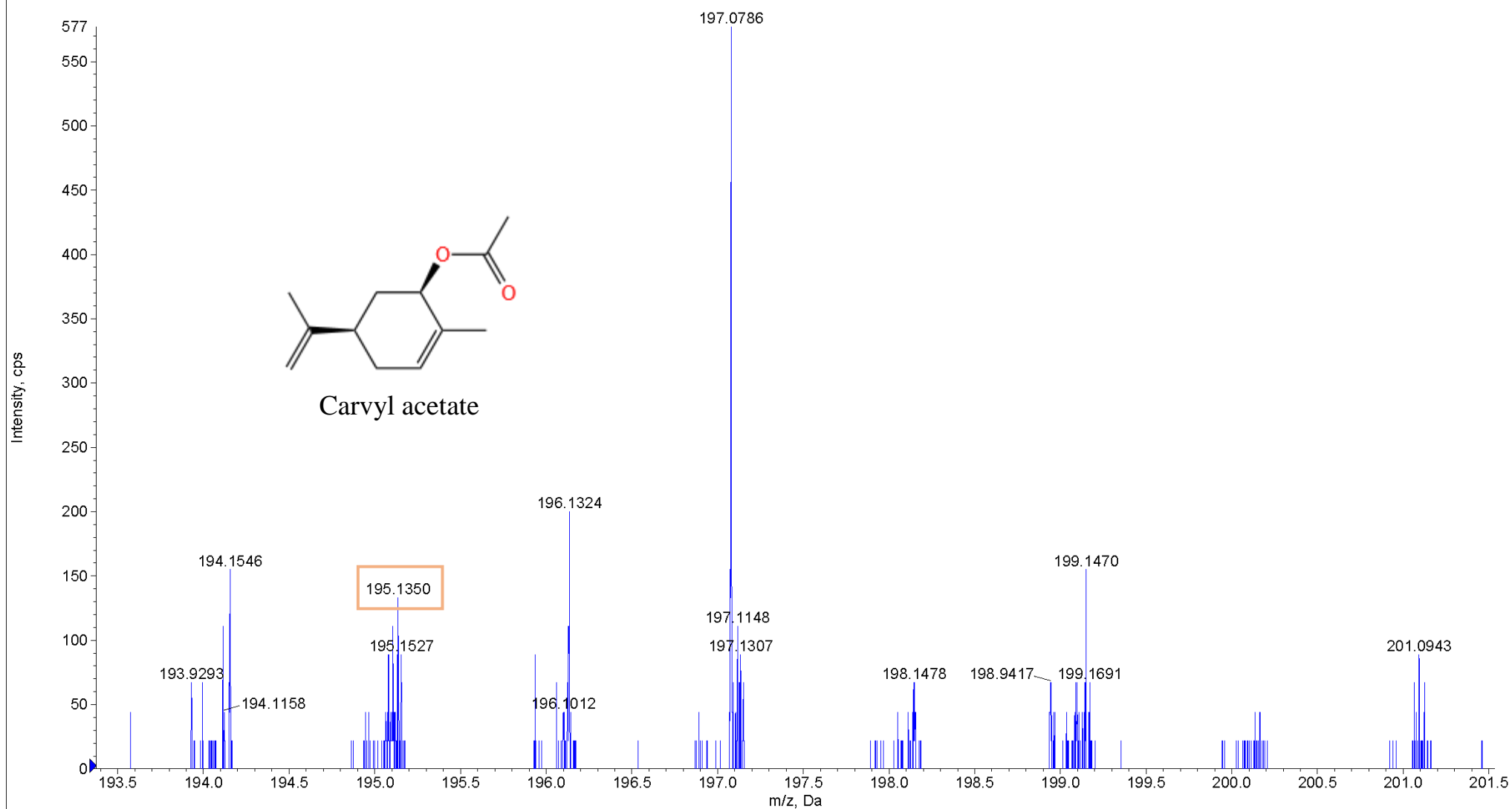
+TOF MS: Exp 1, 19.5206 min from Sample 1 (20221229-POS-32A) of 20221229-POS-32A.wiff  
a=7.01936126420392500e-004, t0=9.78287355092807400e-001 (DuoSpray ())

Max. 4082.0 cps.



+TOF MS: Exp 1, 17.2206 min from Sample 1 (20221229-POS-32A) of 20221229-POS-32A.wiff  
a=7.01935080310749580e-004, t0=9.52907769829852370e-001 (DuoSpray ())

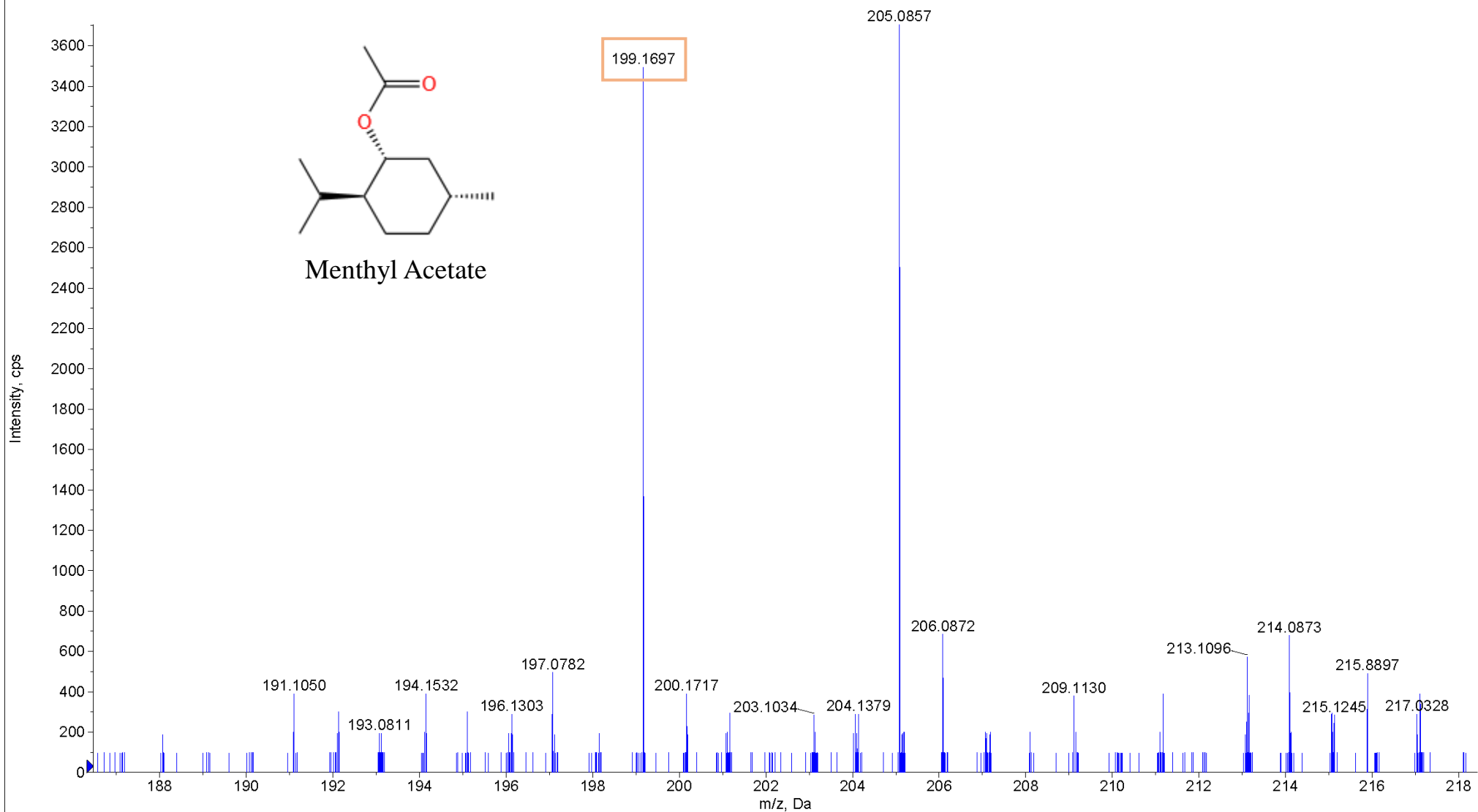
Max. 2790.0 cps.





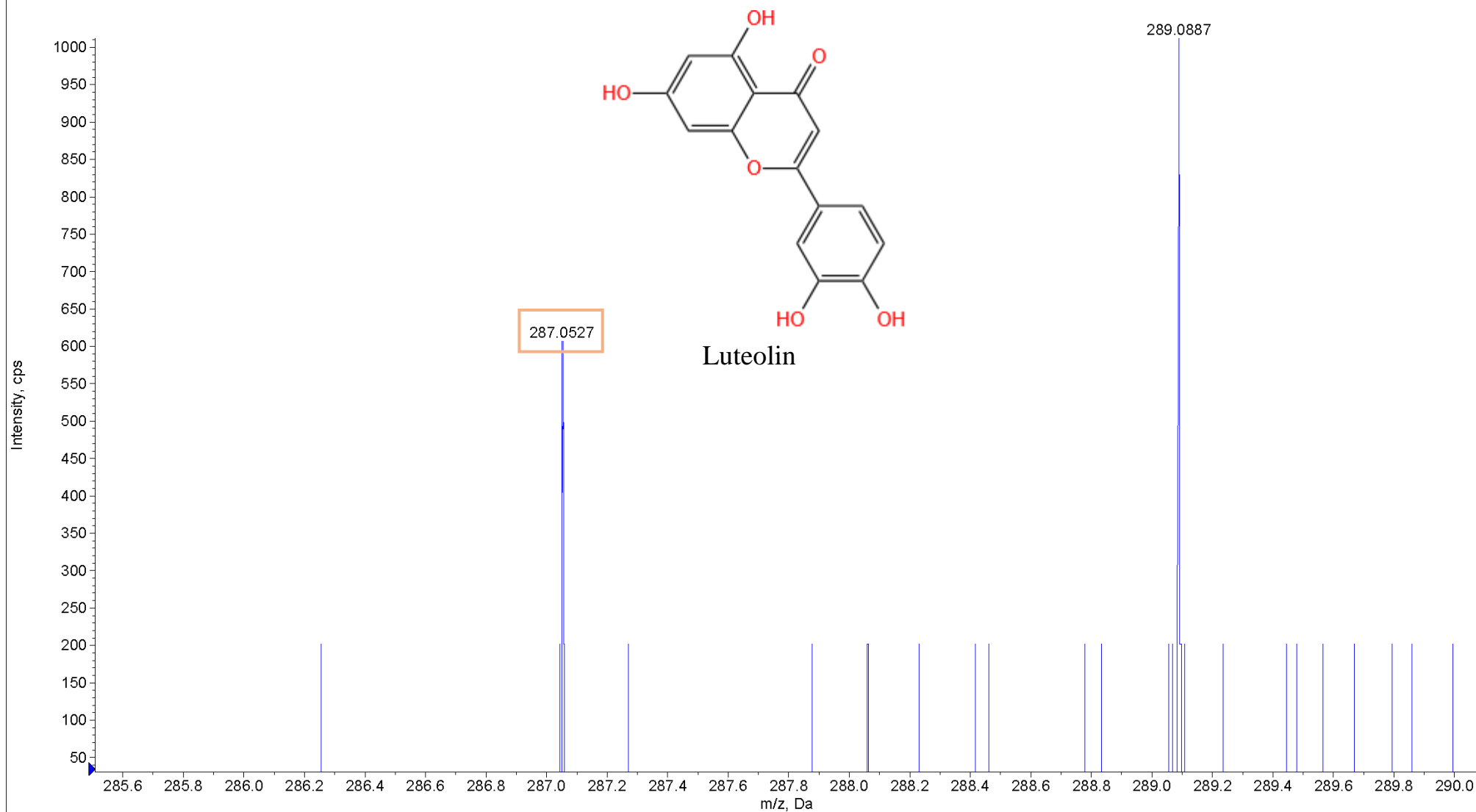
+TOF MS: Exp 1, 27.9822 to 27.9983 min from Sample 1 (20221229-POS-32A) of 20221229-POS-32A.wiff different calibrations (DuoSpray ())

Max. 3.8e5 cps.



+TOF MS: Exp 1, 1.3598 min from Sample 1 (20221229-POS-32A) of 20221229-POS-32A.wiff  
a=7.01936327903755700e-004, t0=9.83699428989459830e-001 (DuoSpray ())

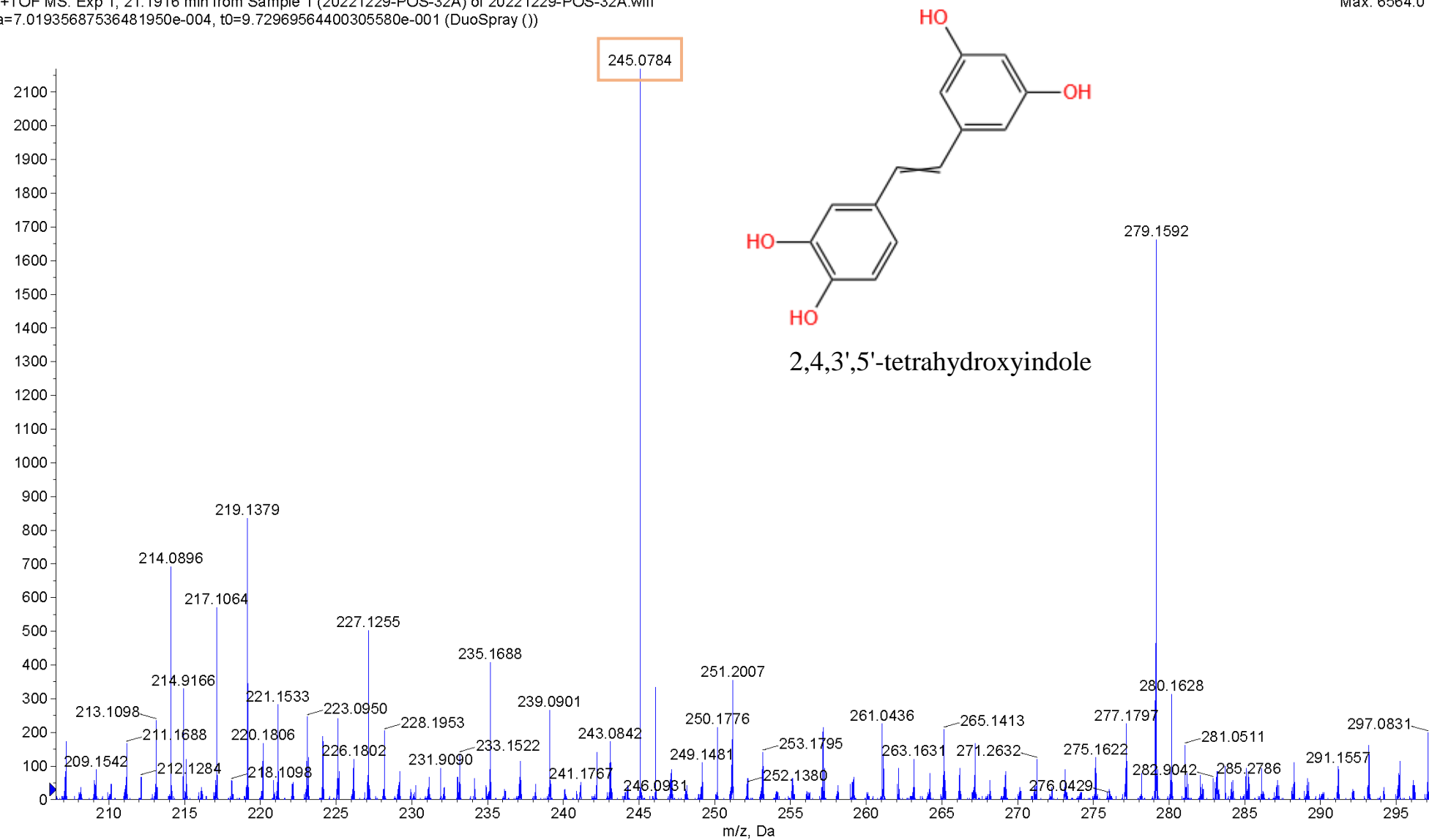
Max. 1.5e6 cps.



+TOF MS: Exp 1, 21.1916 min from Sample 1 (20221229-POS-32A) of 20221229-POS-32A.wiff  
a=7.01935687536481950e-004, t0=9.72969564400305580e-001 (DuoSpray ())

Max. 6564.0 cps.

Intensity, cps



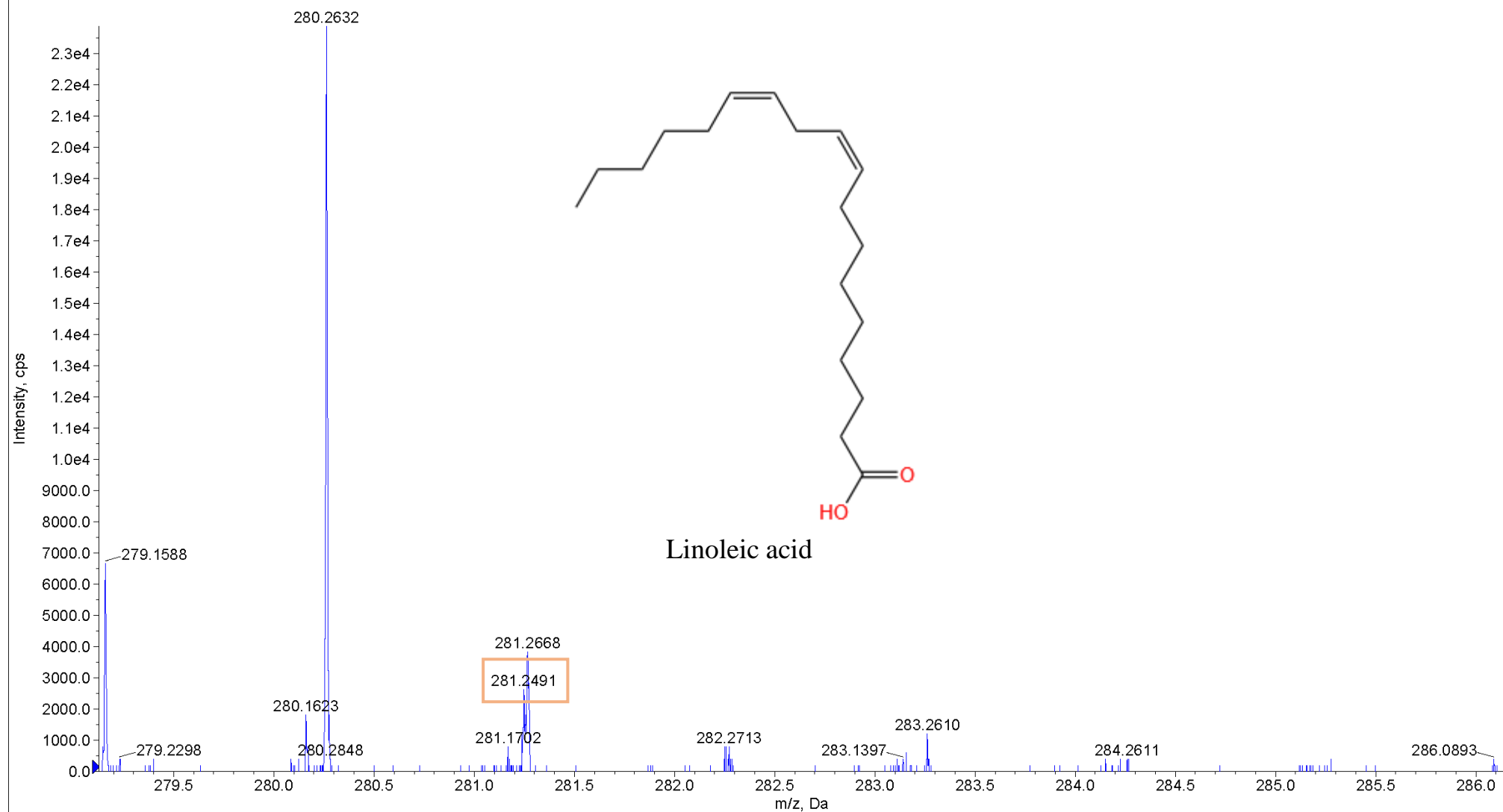
+TOF MS: Exp 1, 1.1192 min from Sample 1 (20221229-POS-32A) of 20221229-POS-32A.wiff  
a=7.01935596381019110e-004, t0=9.85772119846443750e-001 (DuoSpray ())

Max. 2.4e6 cps.



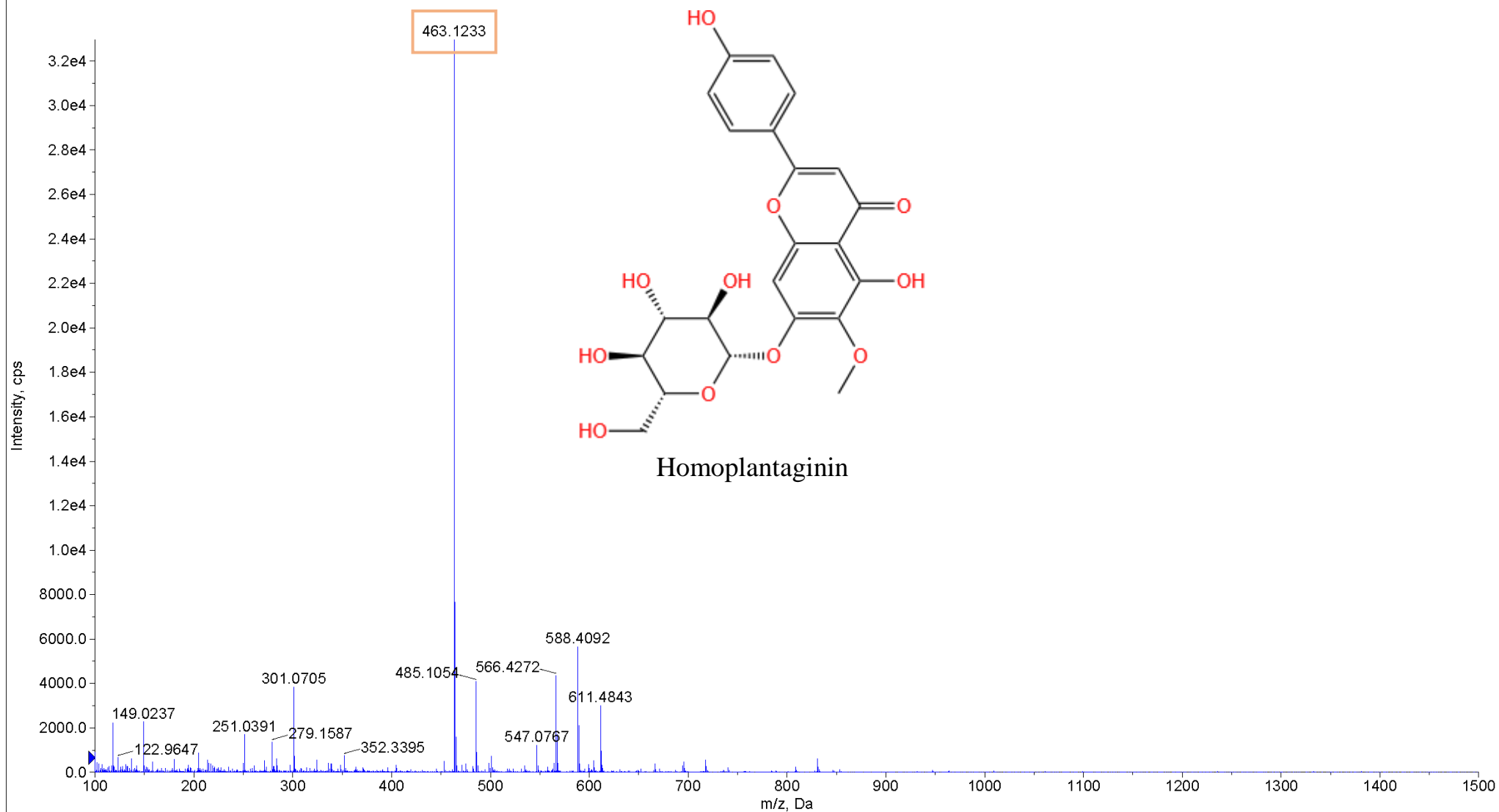
+TOF MS: Exp 1, 28.3317 min from Sample 1 (20221229-POS-32A) of 20221229-POS-32A.wiff  
a=7.01935945878287470e-004, t0=9.31824278175484300e-001 (DuoSpray ())

Max. 4.8e5 cps.



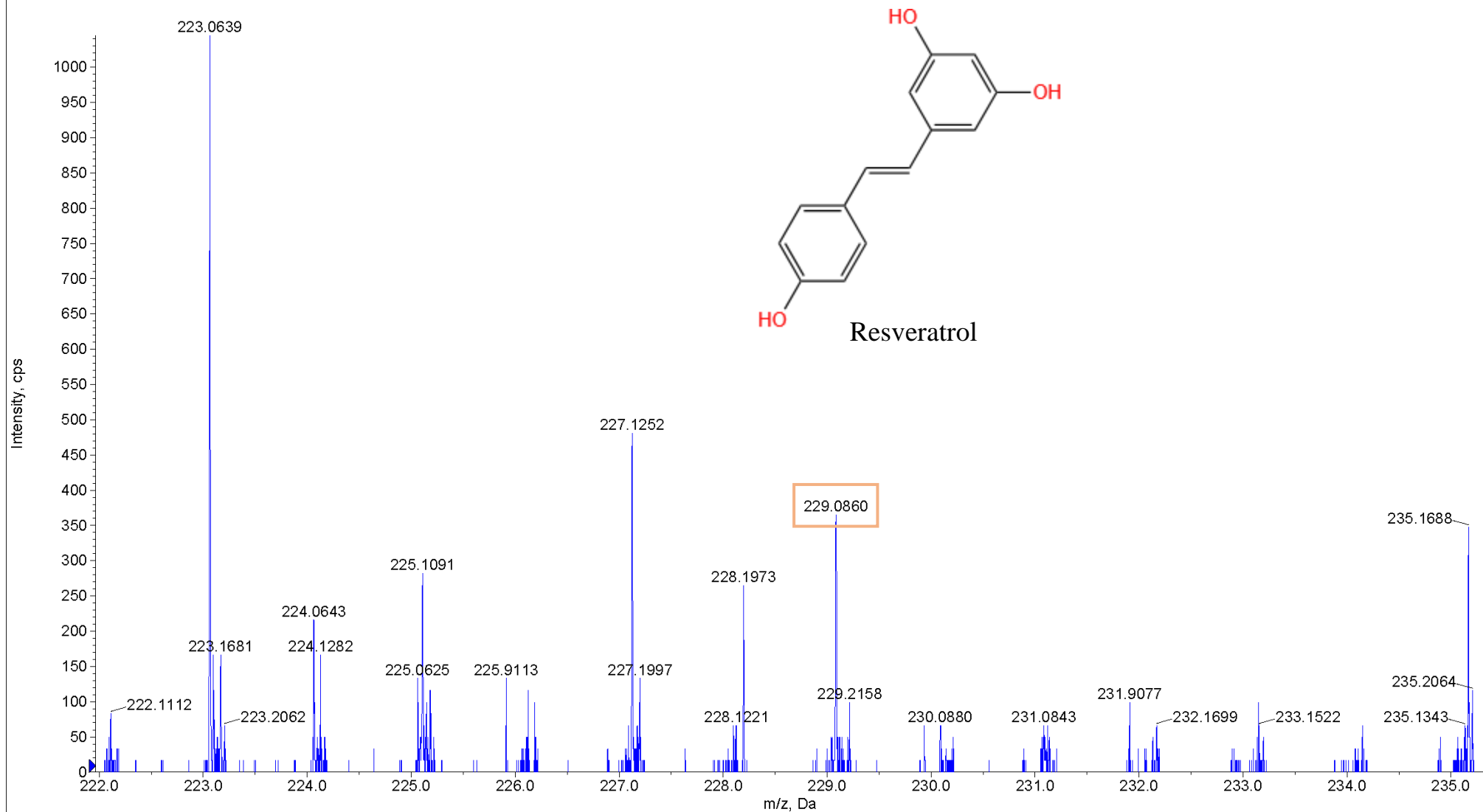
+TOF MS: Exp 1, 12.7591 min from Sample 1 (20221229-POS-32A) of 20221229-POS-32A.wiff  
a=7.01936246920463250e-004, t0=9.81217870078681780e-001 (DuoSpray ())

Max. 3.3e4 cps.



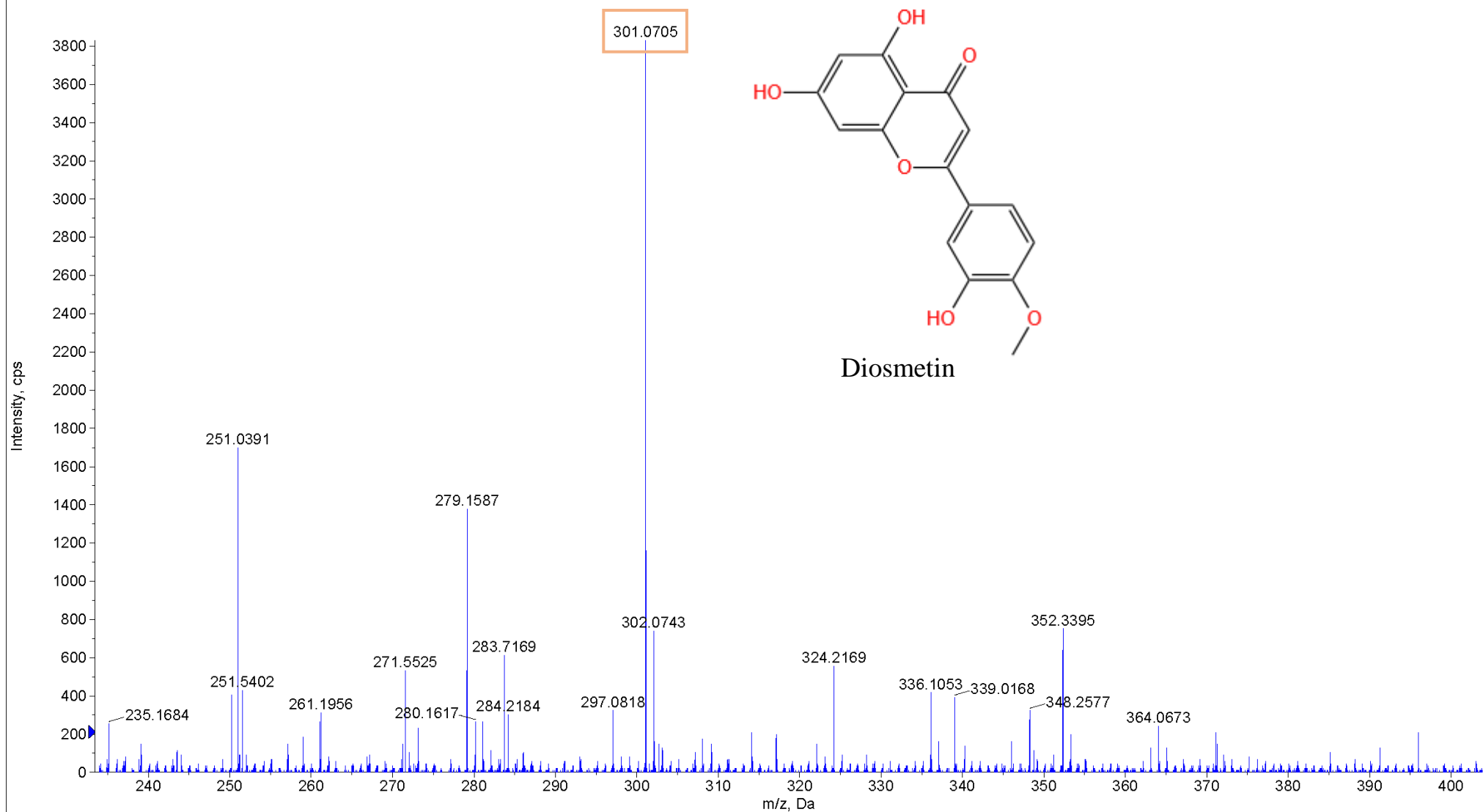
+TOF MS: Exp 1, 23.7246 min from Sample 1 (20221229-POS-32A) of 20221229-POS-32A.wiff  
a=7.01934661497613170e-004, t0=9.32097330949919310e-001 (DuoSpray ())

Max. 3.2e4 cps.



+TOF MS: Exp 1, 12.7591 min from Sample 1 (20221229-POS-32A) of 20221229-POS-32A.wiff  
a=7.01936246920463250e-004, t0=9.81217870078681780e-001 (DuoSpray ())

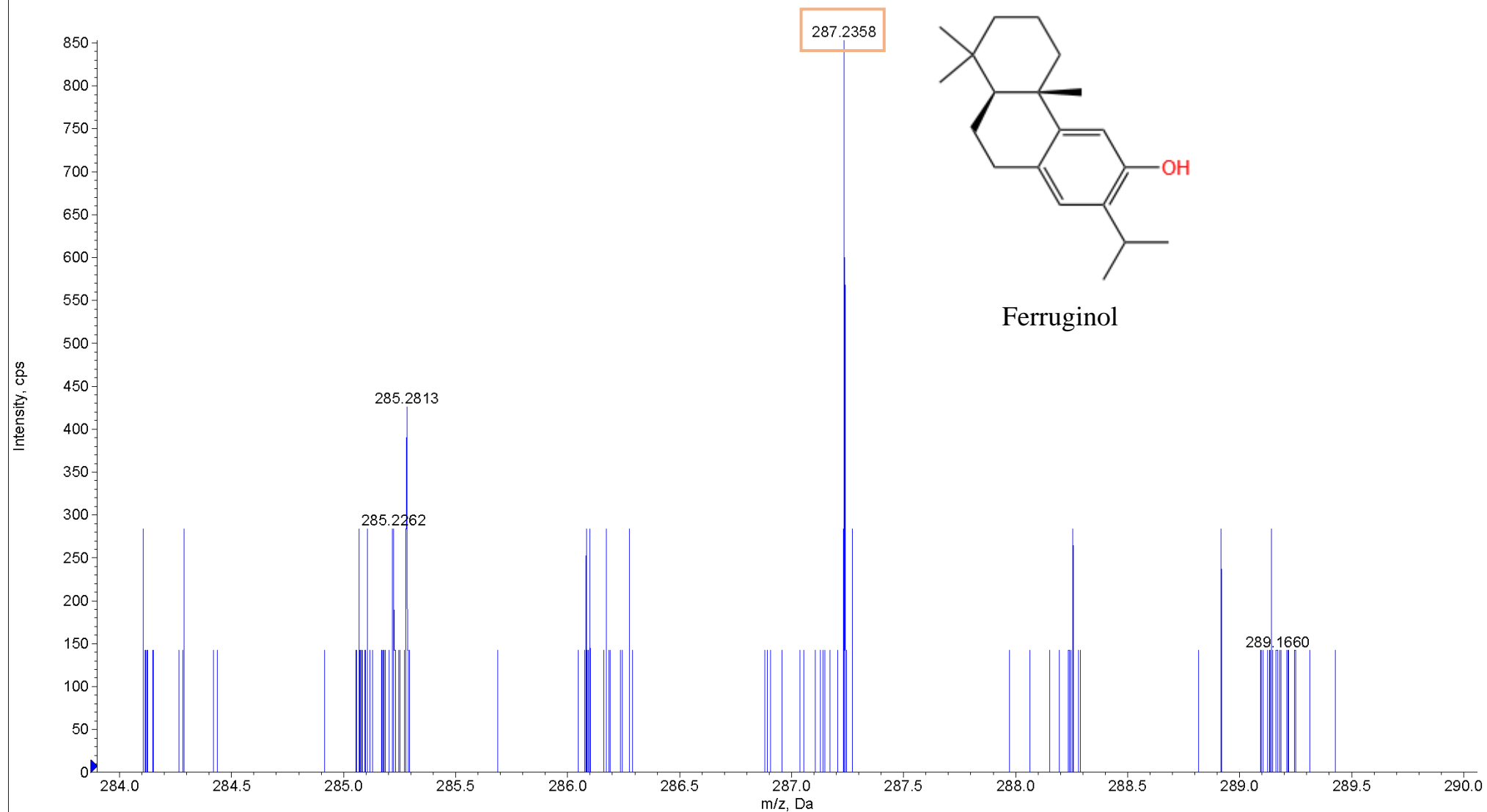
Max. 3.3e4 cps.





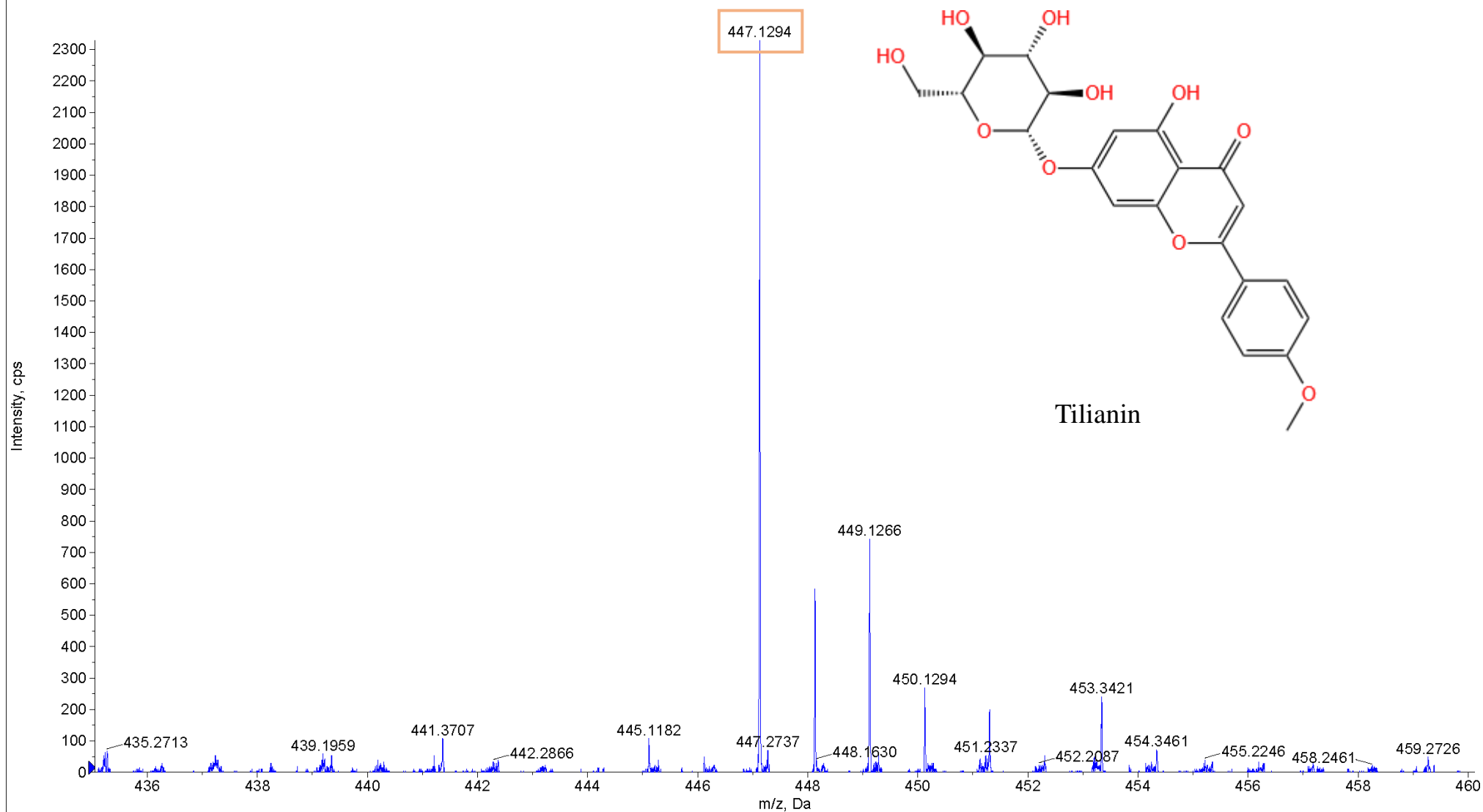
+TOF MS: Exp 1, 27.5534 min from Sample 1 (20221229-POS-32A) of 20221229-POS-32A.wiff  
a=7.01935287479813490e-004, t0=9.33771067061982870e-001 (DuoSpray ())

Max. 2.4e5 cps.



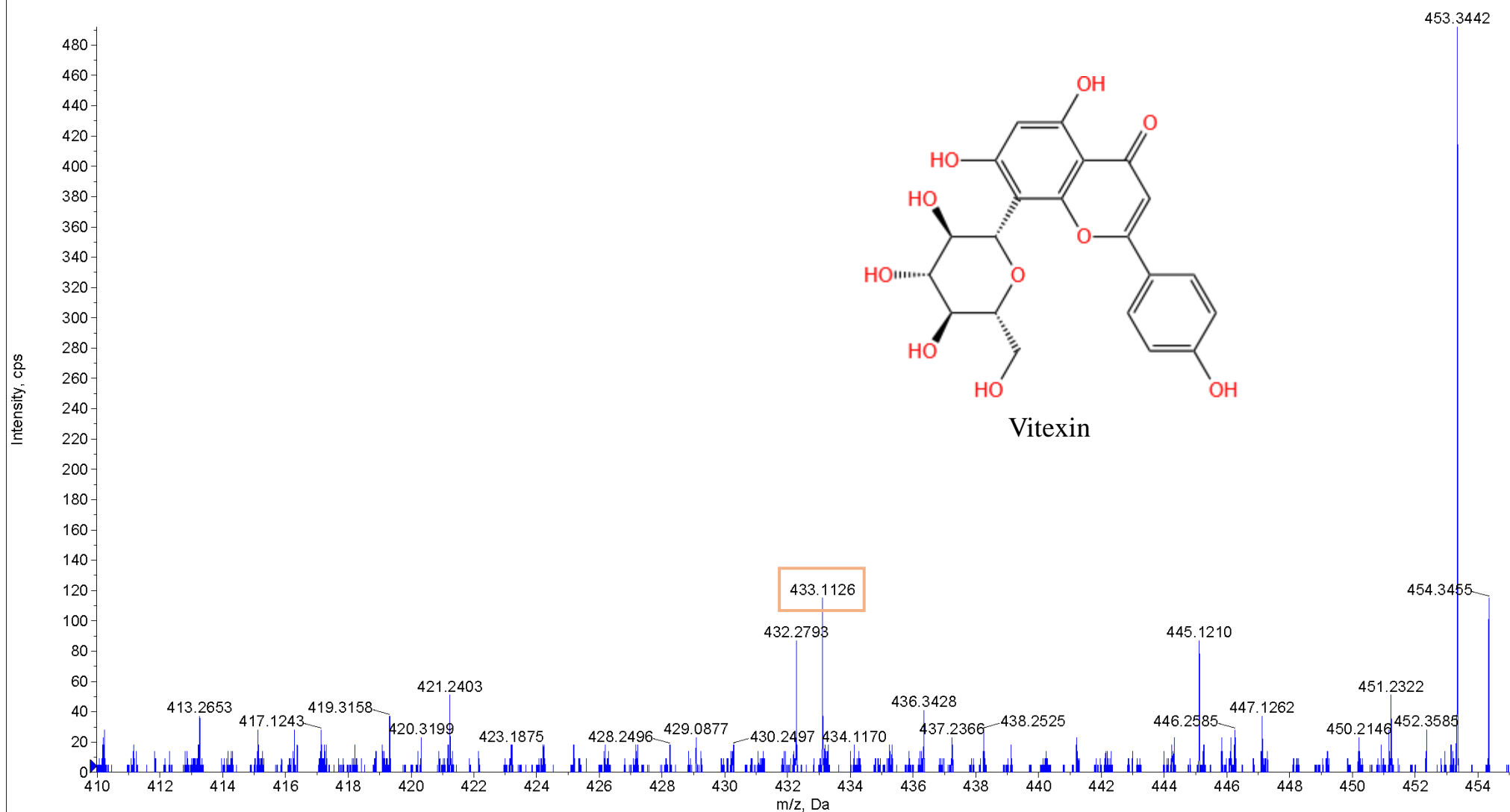
+TOF MS: Exp 1, 18.6694 min from Sample 1 (20221229-POS-32A) of 20221229-POS-32A.wiff  
a=7.01935623684533050e-004, t0=9.68816984729583110e-001 (DuoSpray ())

Max. 2488.0 cps.



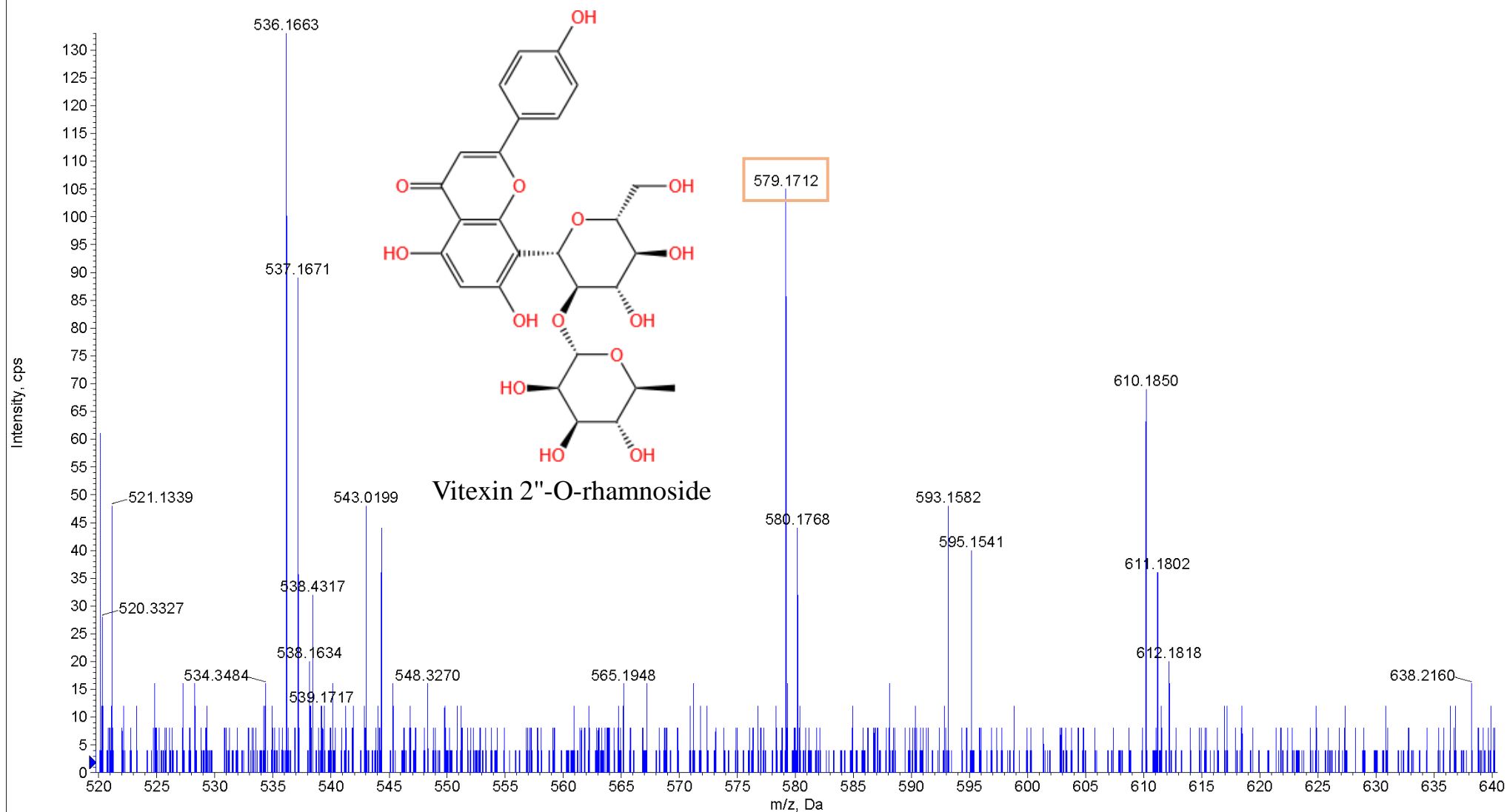
+TOF MS: Exp 1, 12.5930 min from Sample 1 (20221229-POS-32A) of 20221229-POS-32A.wiff  
a=7.01935941640435870e-004, t0=9.77175220038061900e-001 (DuoSpray ())

Max. 9826.0 cps.



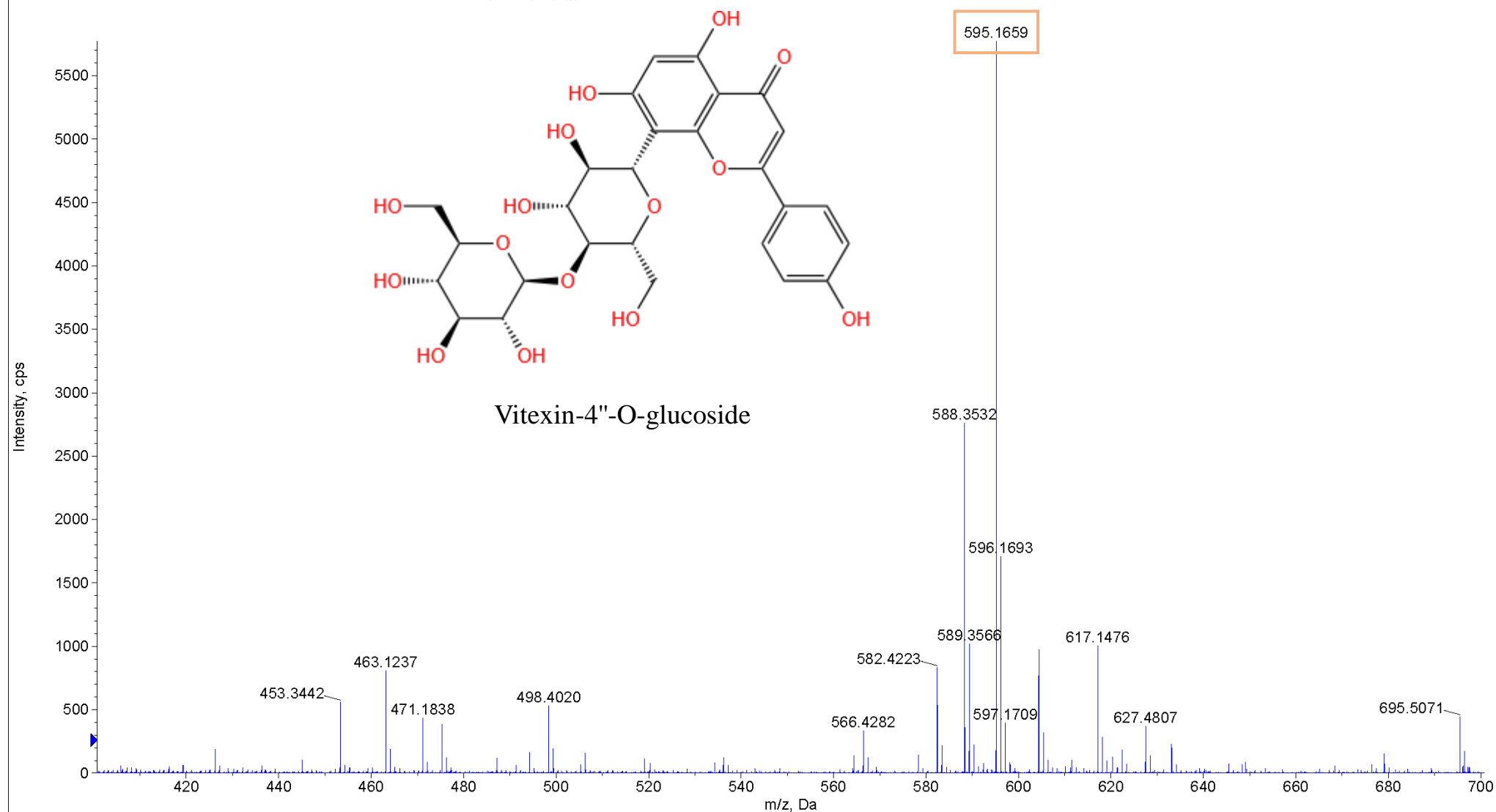
+TOF MS: Exp 1, 10.5437 min from Sample 1 (20221229-POS-32A) of 20221229-POS-32A.wiff  
a=7.01935622876717650e-004, t0=9.75613299058979980e-001 (DuoSpray ())

Max. 2295.0 cps.



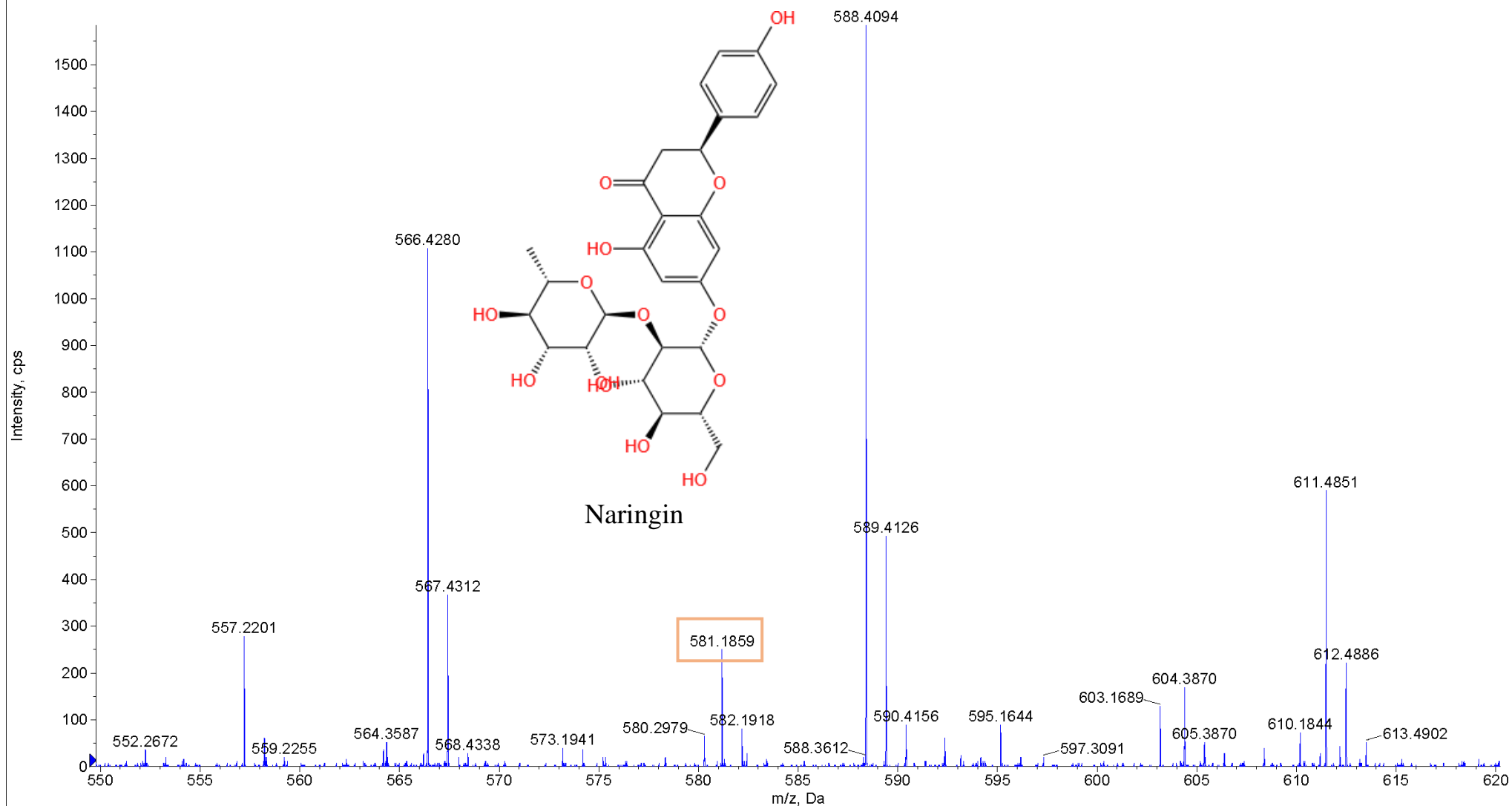
+TOF MS: Exp 1, 12.0836 min from Sample 1 (20221229-POS-32A) of 20221229-POS-32A.wiff  
a=7.01935938140646320e-004, t0=9.81097823366202440e-001 (DuoSpray ())

Max. 5773.0 cps.



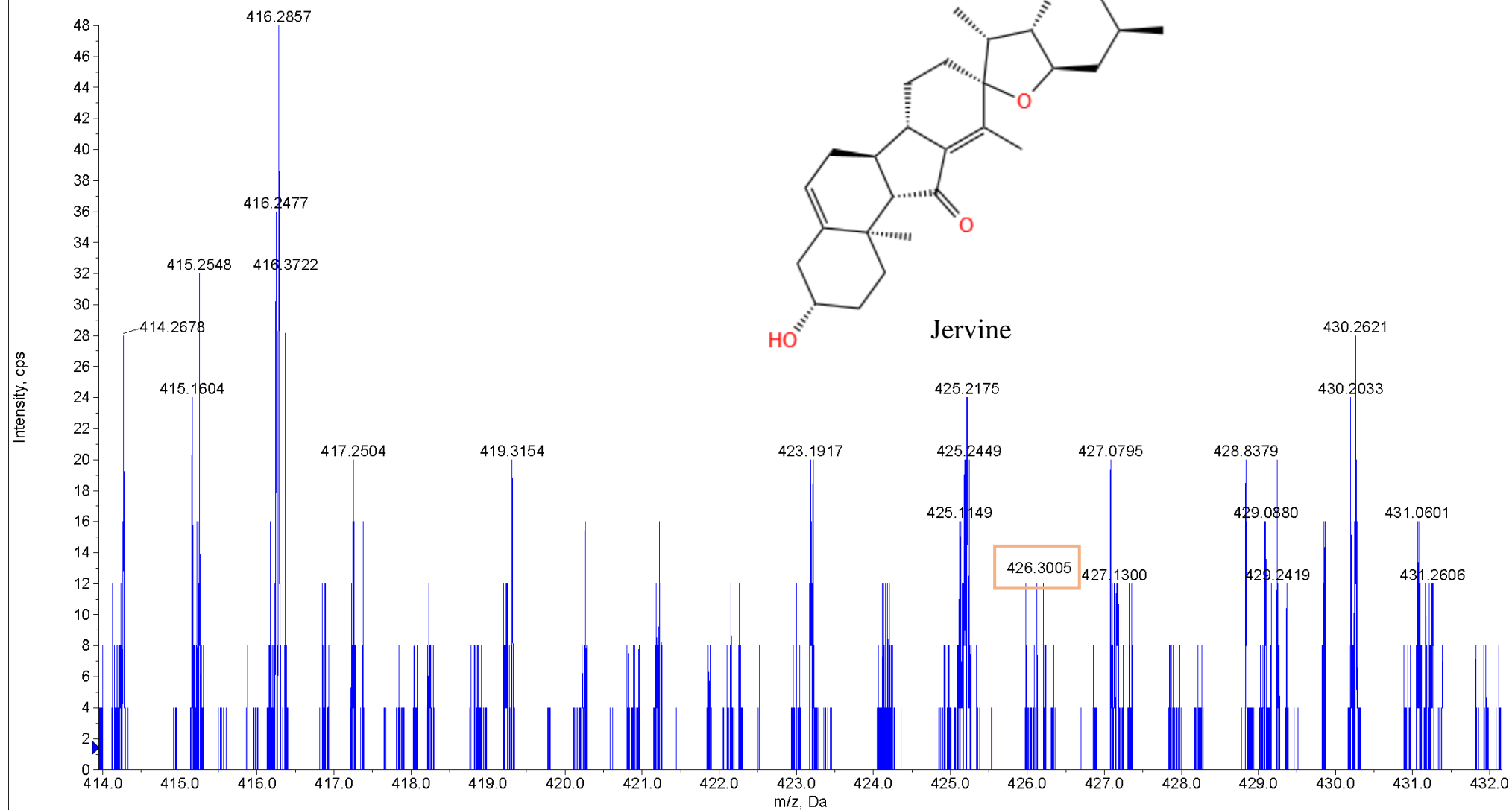
+TOF MS: Exp 1, 13.2908 min from Sample 1 (20221229-POS-32A) of 20221229-POS-32A.wiff  
a=7.01935952763440940e-004, t0=9.73576528601308390e-001 (DuoSpray ())

Max. 2954.0 cps.



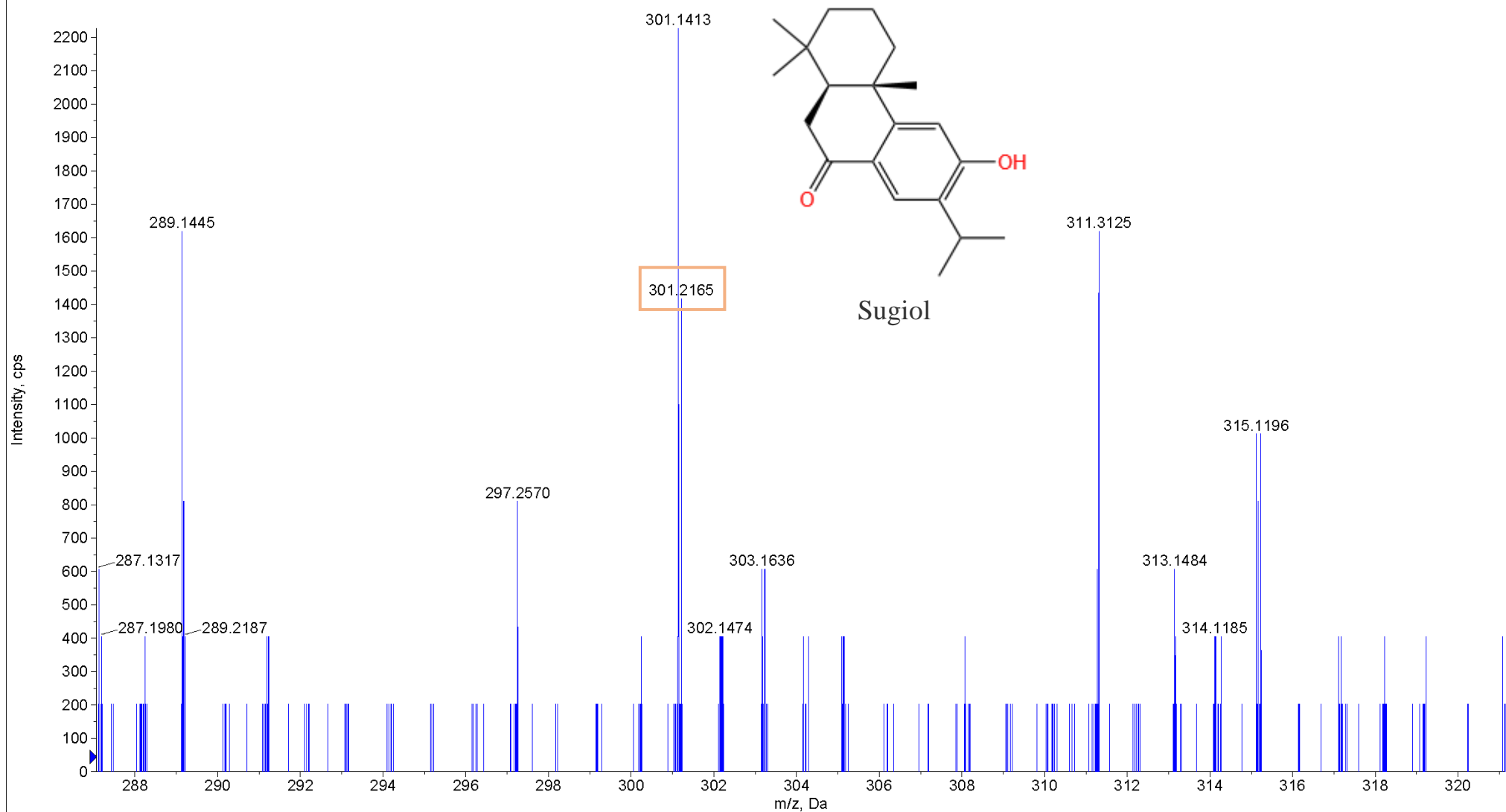
+TOF MS: Exp 1, 11.5898 min from Sample 1 (20221229-POS-32A) of 20221229-POS-32A.wiff  
a=7.01936146349402220e-004, t0=9.92810533938675910e-001 (DuoSpray ())

Max. 2050.0 cps.



+TOF MS: Exp 1, 23.1533 min from Sample 1 (20221229-POS-56H) of 20221229-POS-56H.wiff  
a=7.01935853906289200e-004, t0=1.00709575939345400e+000 (DuoSpray (j))

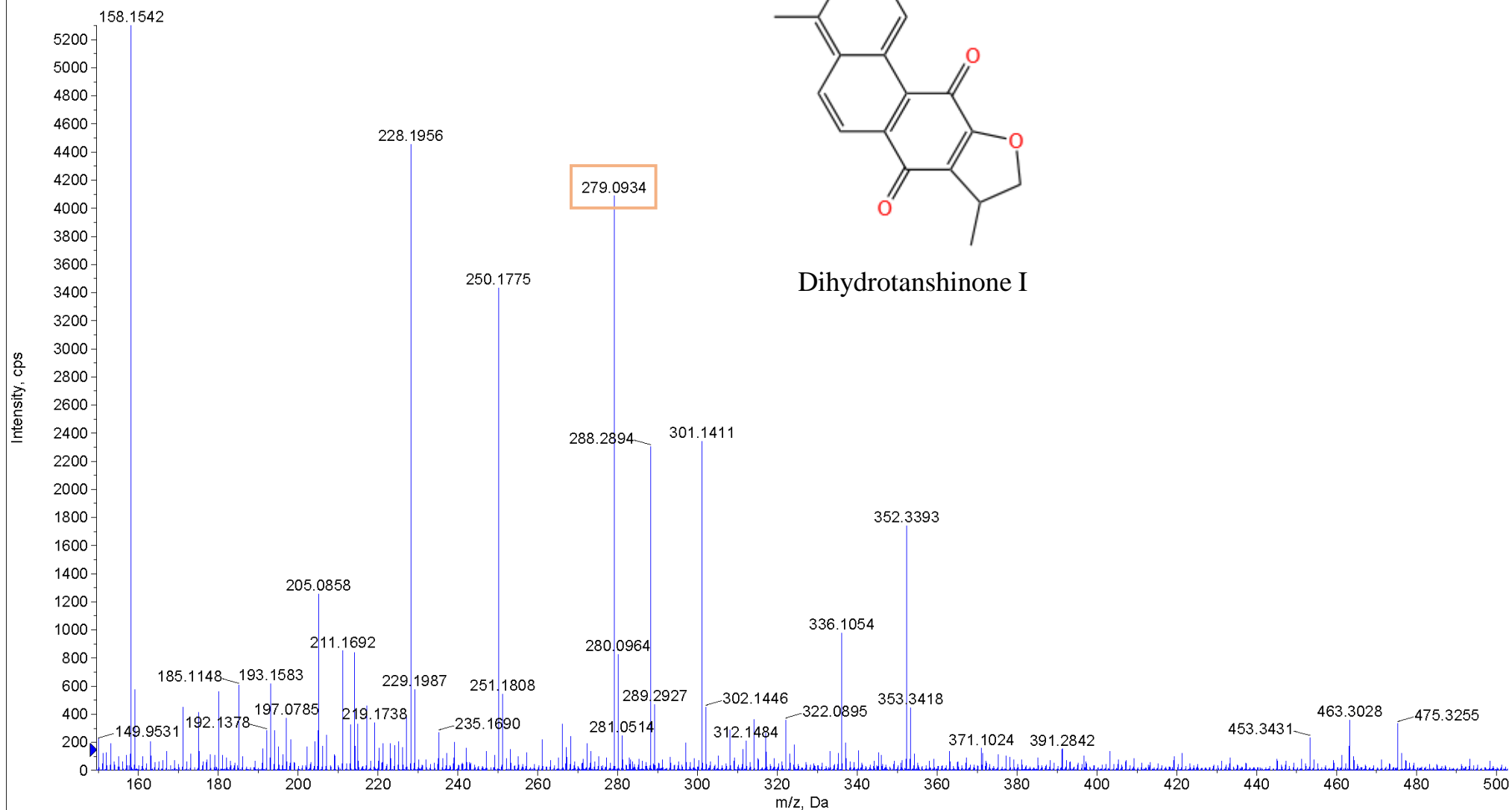
Max. 9.5e5 cps.





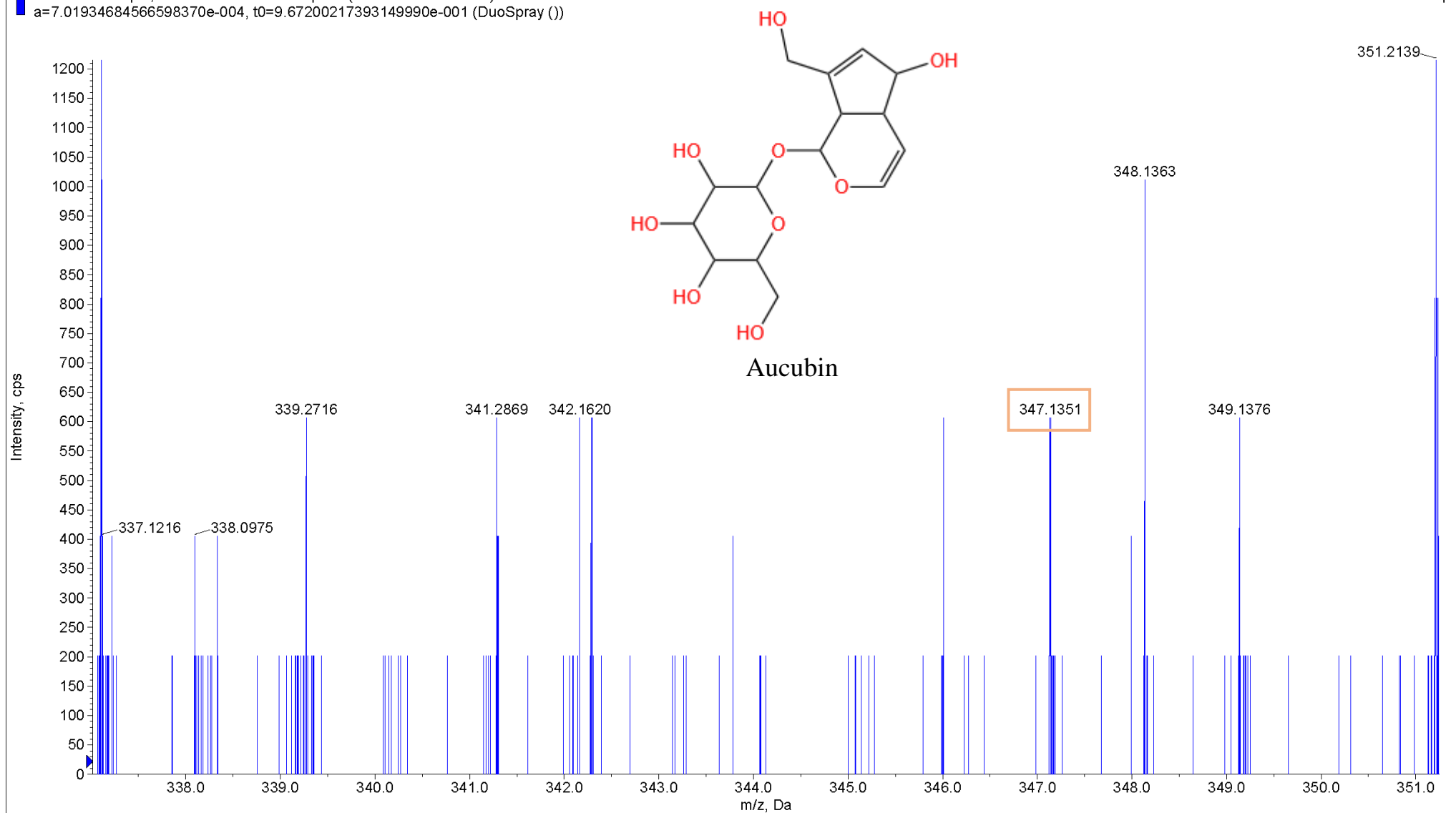
+TOF MS: Exp 1, 19.3588 min from Sample 1 (20221229-POS-56H) of 20221229-POS-56H.wiff  
a=7.01935122923889050e-004, t0=9.95734410254321300e-001 (DuoSpray ( ))

Max. 5301.0 cps.

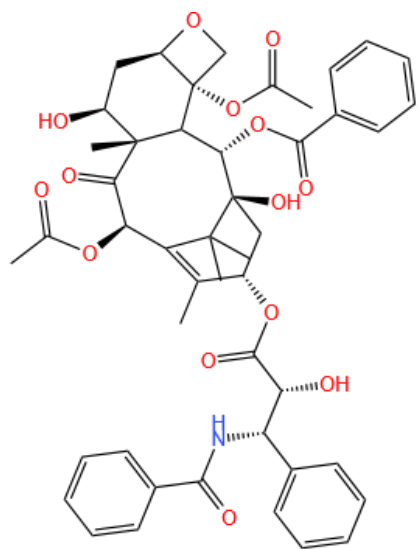
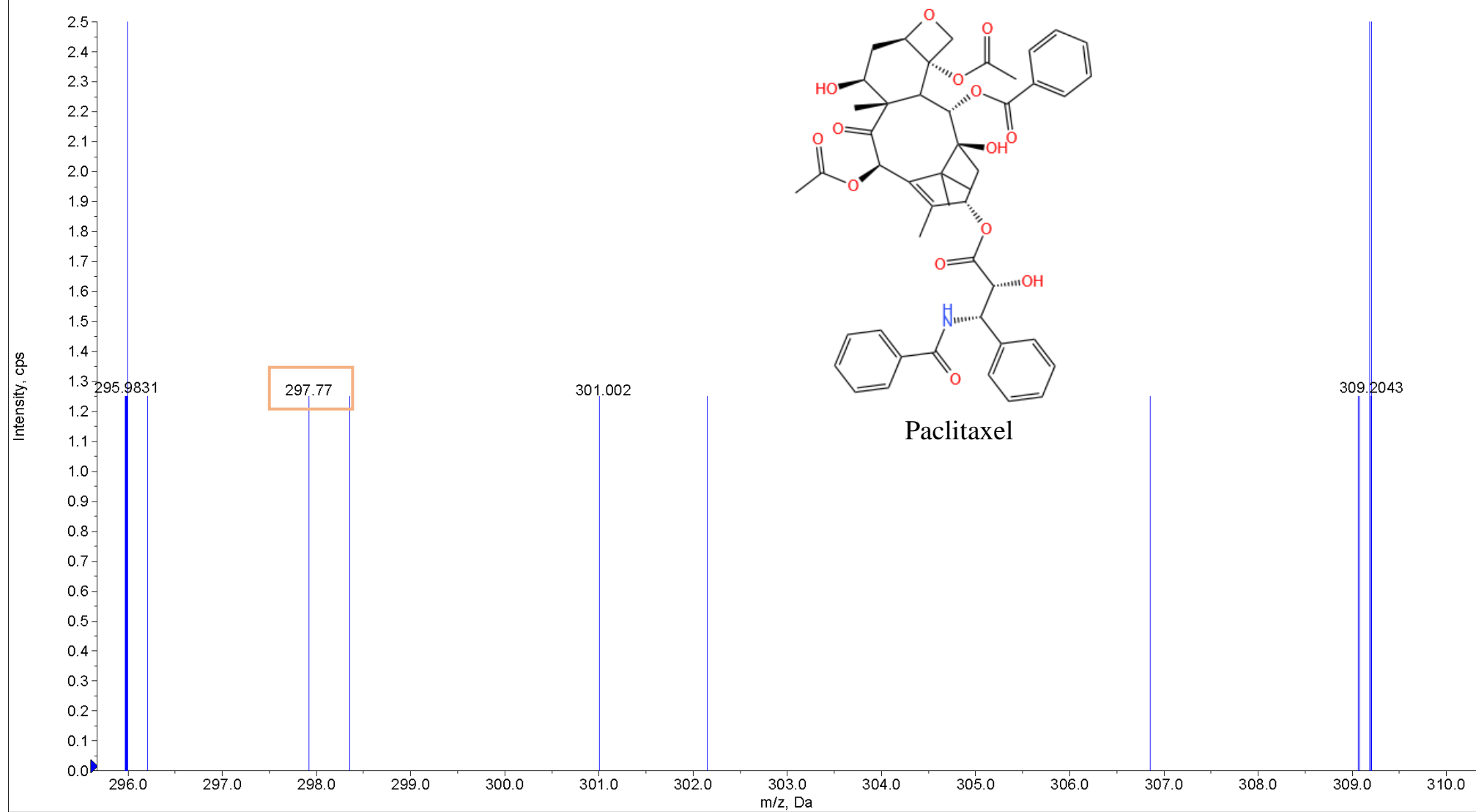


+TOF MS: Exp 1, 26.4680 min from Sample 1 (20221229-POS-56H) of 20221229-POS-56H.wiff  
a=7.01934684566598370e-004, t0=9.67200217393149990e-001 (DuoSpray ())

Max. 4.9e5 cps.



Max. 19.3 cps.



# Paclitaxel