

Figure S1. Collision-induced dissociation (CID) spectra of TMAO in tandem mass spectrometry. CID spectrum of plasma (A) and the synthetic internal standard of TMAO (B) are shown.

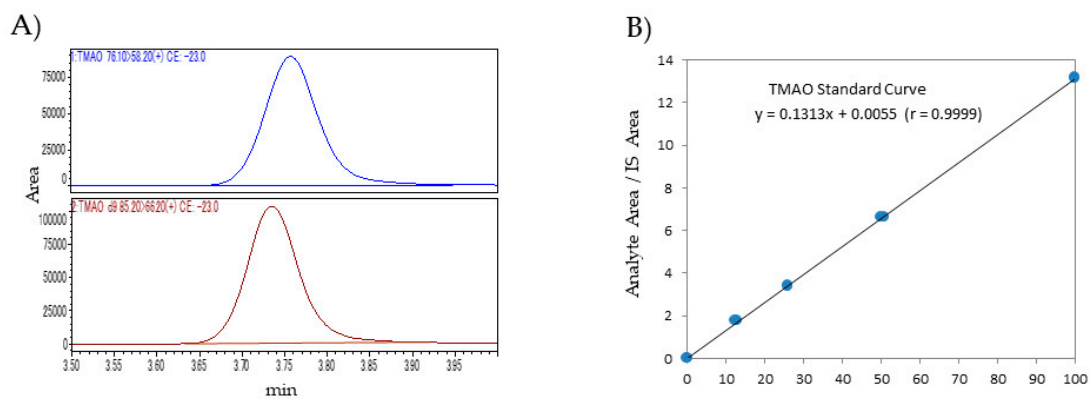


Figure S2. Determination of plasma concentration of TMAO with d₉-TMAO as an internal standard using LC-MS/MS. (A) Peaks of plasma TMAO (m/z 76) and synthetic d₉-TMAO. (B) A standard curve of plasma TMAO.