

Supplementary figures

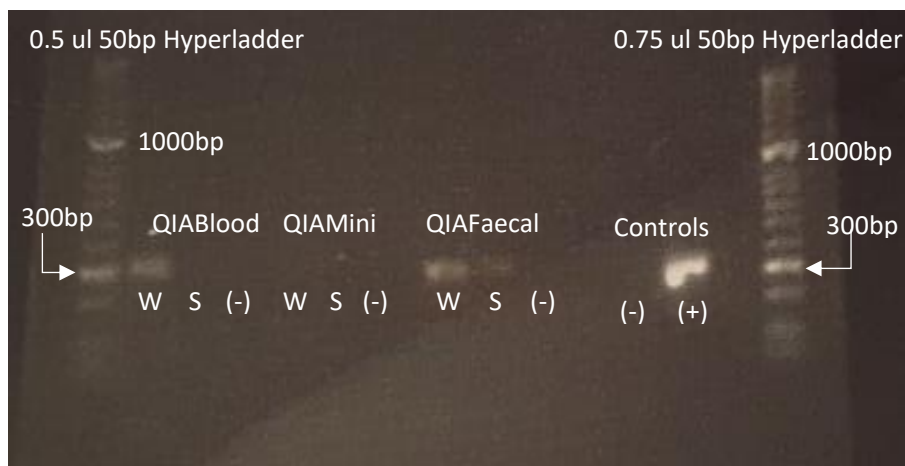


Figure S1: Gel electrophoresis of 25 cycles of PCR targeting a region of the 16s rRNA gene (expected length ~316bp) for comparison of bacterial DNA extraction. QIABlood = QIAamp DNA blood mini kit, QIAMini = QIAamp DNA mini kit, and QIAFaecal = QIAamp DNA PowerFaecal Pro DNA kit, Controls = PCR controls, W = whole milk, S = skim milk, (-) = negative control, (+) = positive control

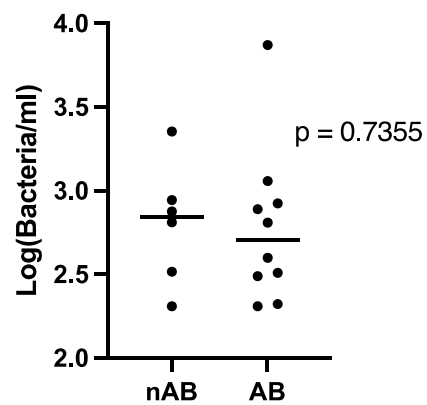


Figure S2: Comparison of Log(Bacterial/ml) of breastmilk samples at 6 weeks post-partum unaffected by antibiotics nAB (n = 6, vaginally delivered) and those affected by antibiotics in the previous 6 weeks (n = 10, 8 Caesarean Delivered, 2 vaginally delivered)