

Figure S1: Forest plot of pulmonary infections [24,26,28,29,32,36–39, 43]

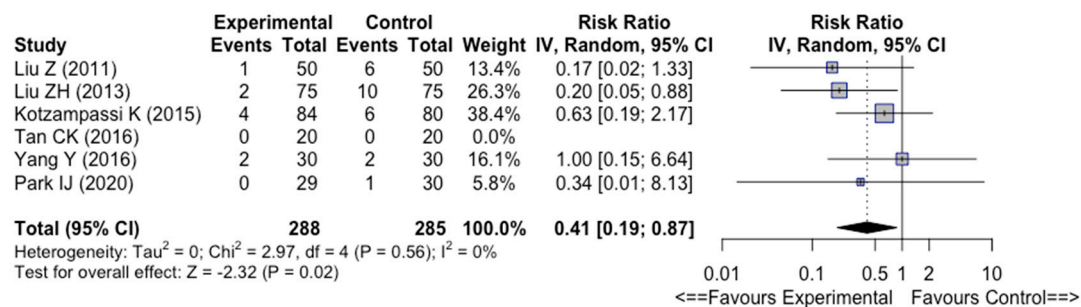


Figure S2: Forest plot of urinary infections [26,29,32,36,37,43]

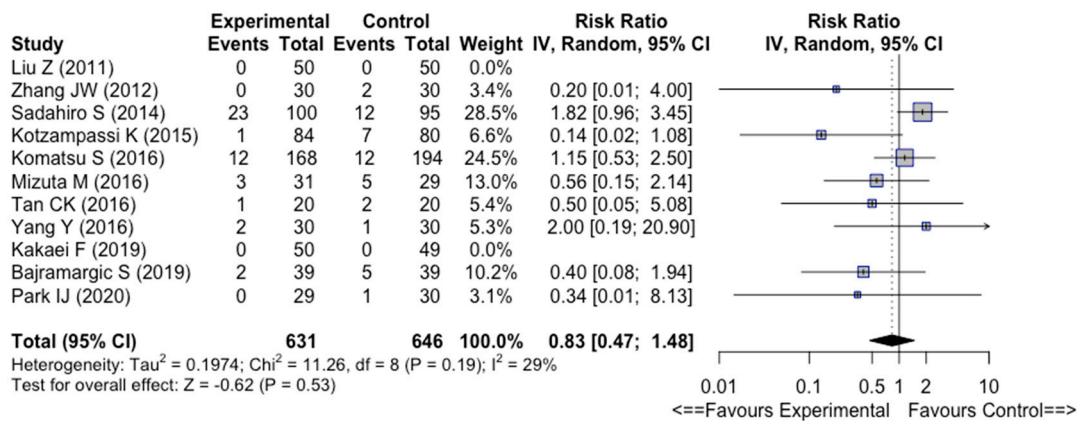


Figure S3: Forest plot of anastomotic leaks [26,28,31,32,34–37,39,41,43]

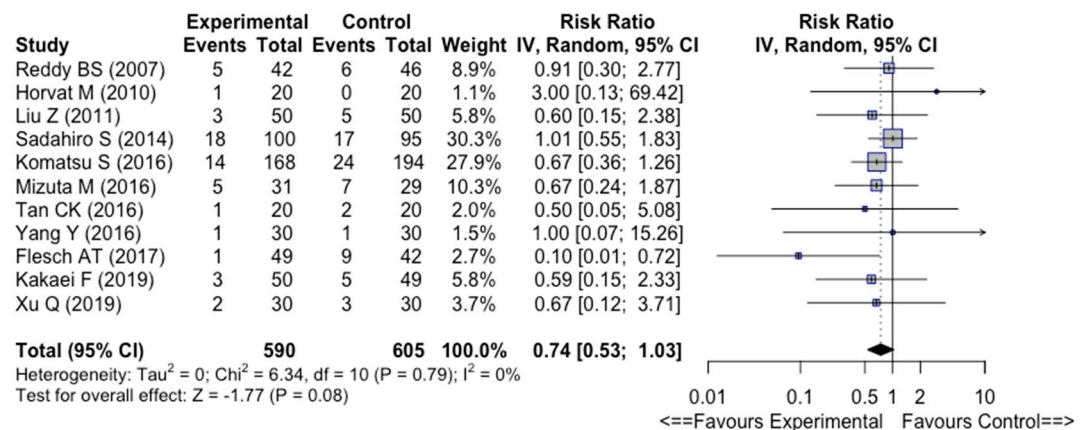


Figure S4: Forest plot of wound infections [24–26,31,34–39,42]

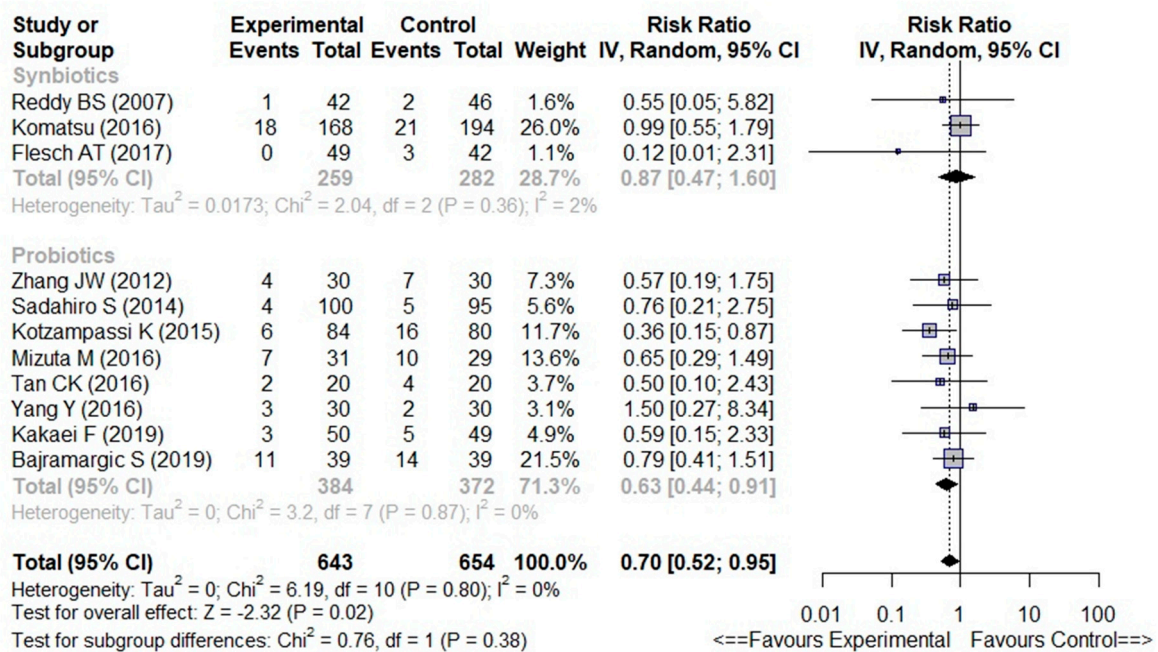


Figure S5: Forest plot of probiotics [26–28,31–33,35–37] and synbiotics [24,34,40] subgroup

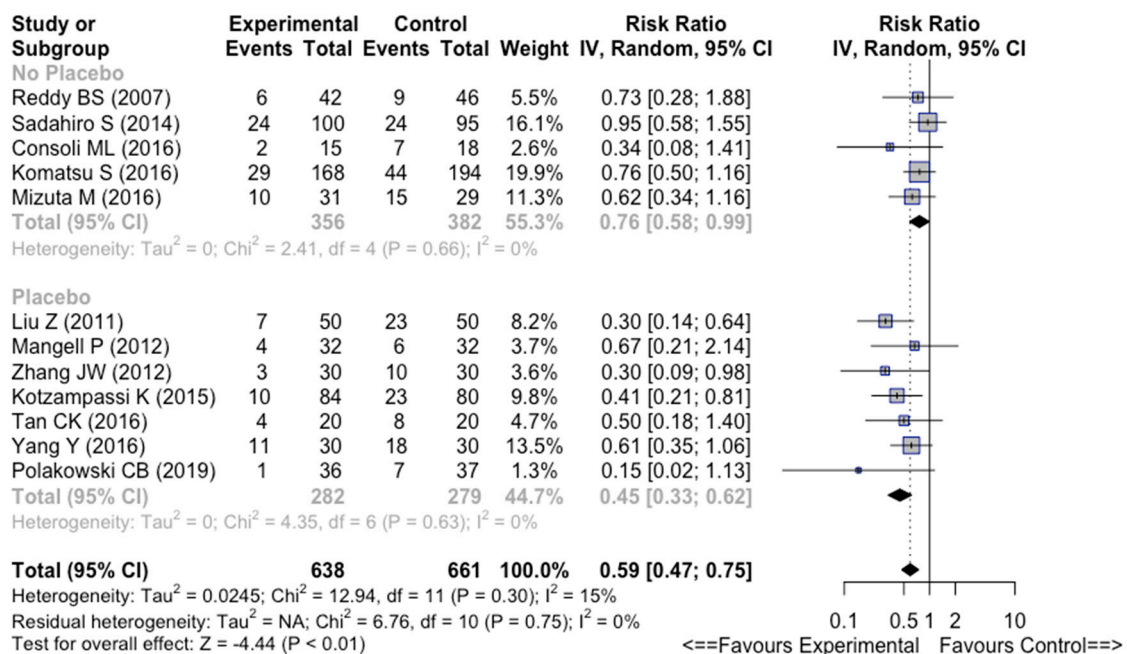


Figure S6: Forest plot of placebo [26–28,32,36,37,40] and standard care [24,31,33–35] for overall infectious complications

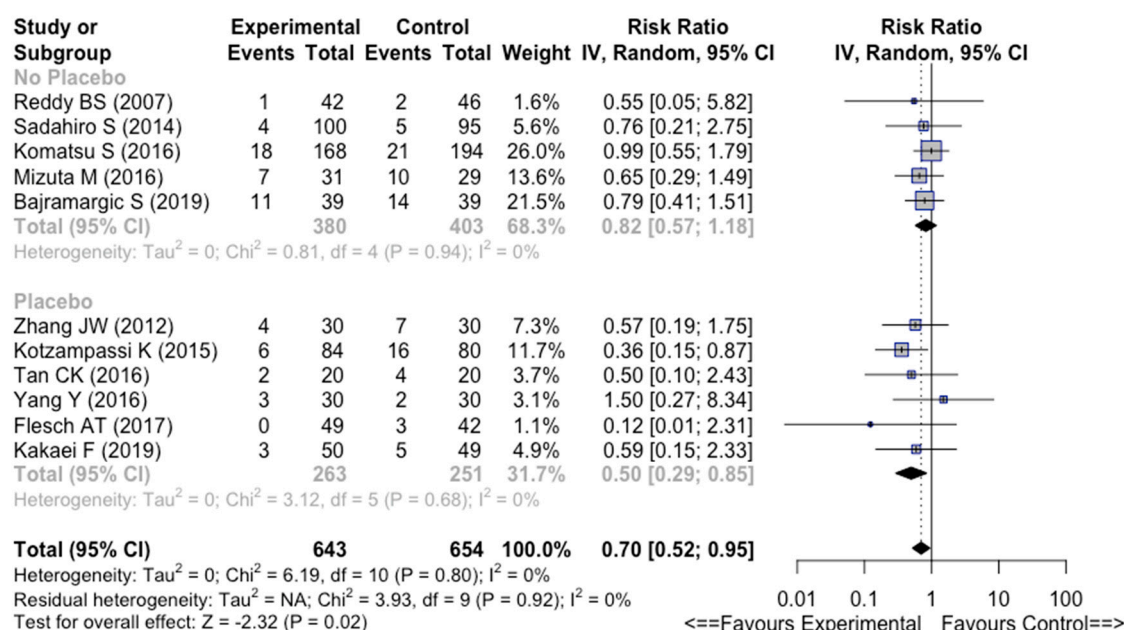


Figure S7: Forest plot of placebo [28,32,36–39] and standard care [24,31,34,35,41] for surgical site infections

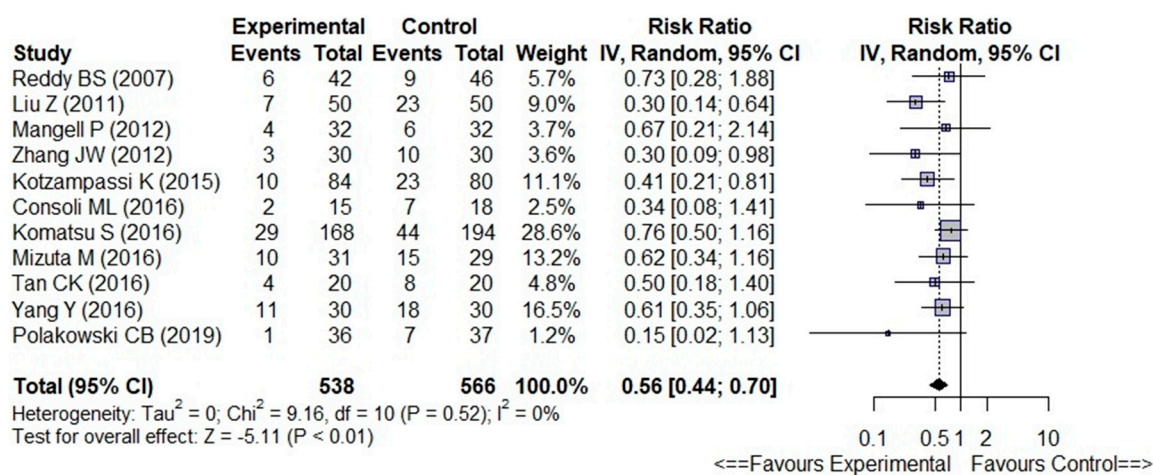


Figure S8: Forest plot of infectious complications according to the Jadad score ≥ 3 [24,26–28,32–37,40]

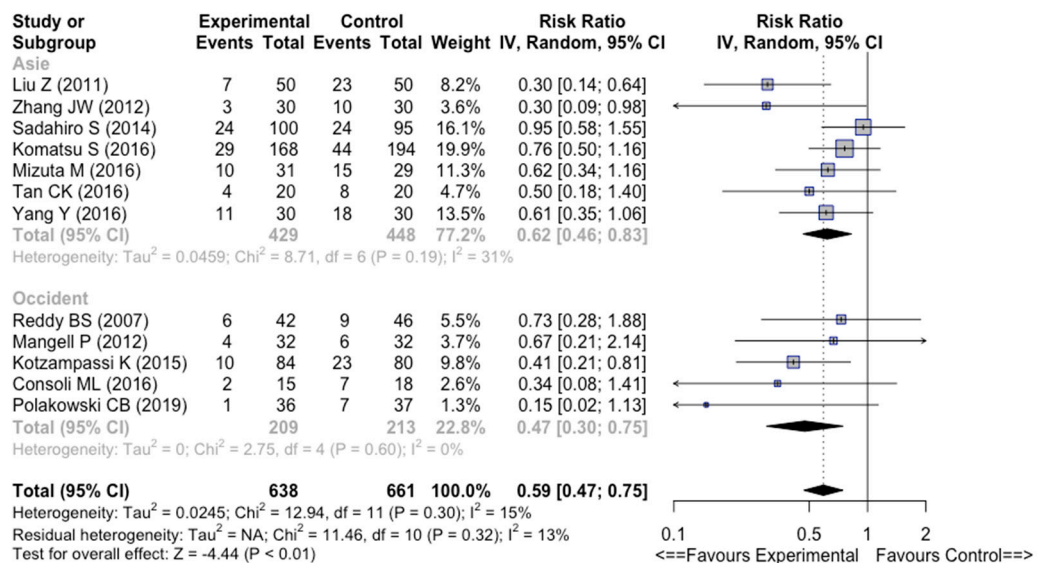


Figure S9: Forest plot of overall infectious complications according to ethnicity (Asia [26,28,31,34–37]; Occident [24,27,32,33,40])

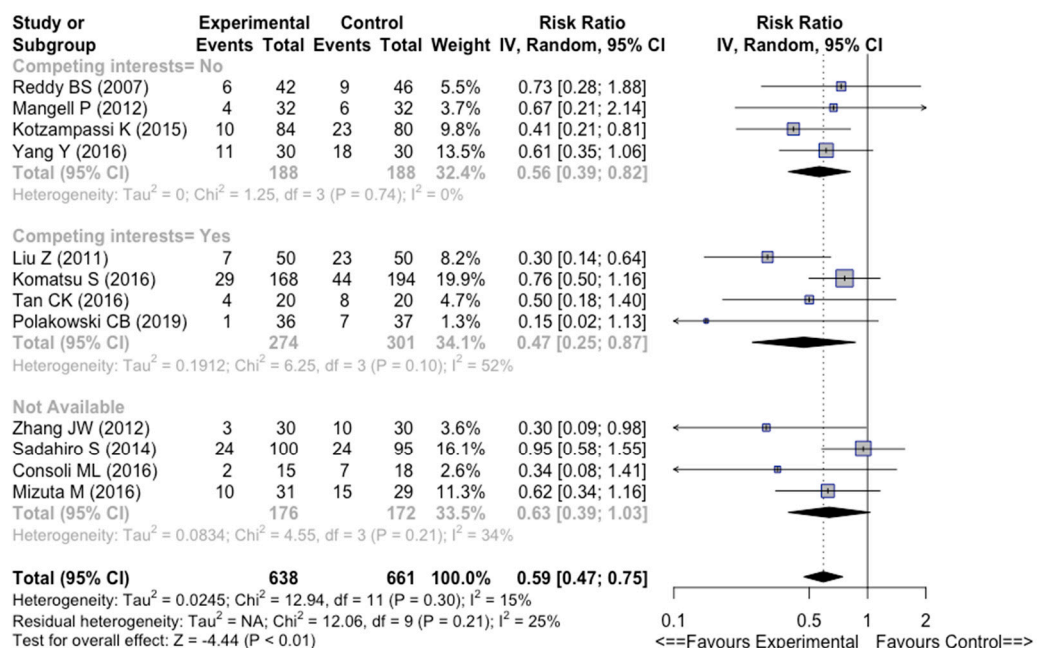


Figure S10: Forest plot of overall infectious complications according to competing interest of authors (No Competing interests [24,27,32,37] ; Competing interests [26,34,36,40] ; not available [28,31,33,35])