

Supplementary Figures

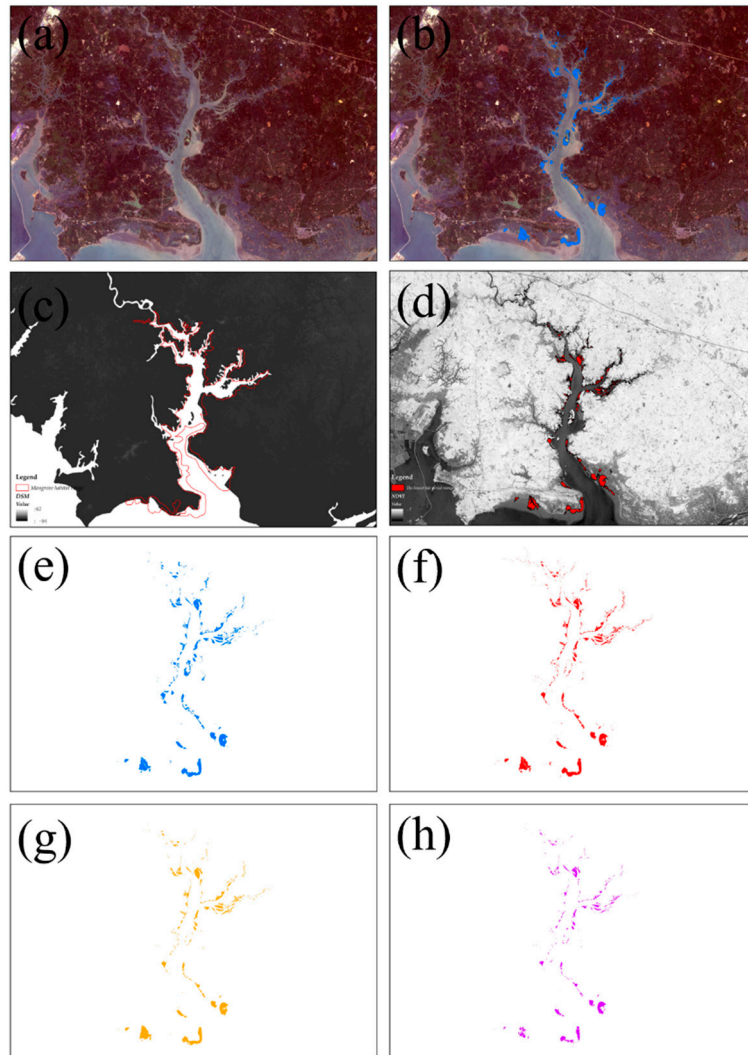


Figure S1: The Hybrid U-Net result of DFJ at the Beibu Gulf. (a, b) The satellite image of mangrove area in 2021, (c) Mangrove habitat information, (d) Low tide level acquisition, (e) The Hybrid U-Net result in 2020, (f) The Hybrid U-Net result in 2019, (g) The Hybrid U-Net result in 2018, (h) The Hybrid U-Net result in 2015

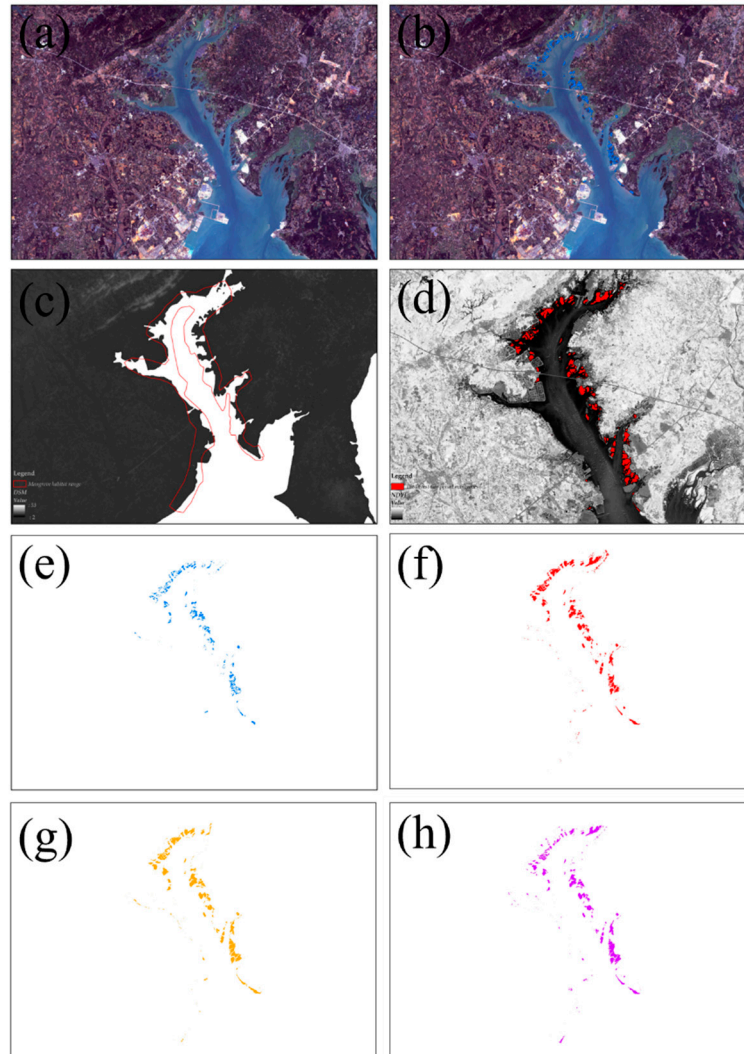


Figure S2: The Hybrid U-Net result of TSG at the Beibu Gulf. (a, b) The satellite image of mangrove area in 2021, (c) Mangrove habitat information, (d) Low tide level acquisition, (e) The Hybrid U-Net result in 2020, (f) The Hybrid U-Net result in 2019, (g) The Hybrid U-Net result in 2018, (h) The Hybrid U-Net result in 2015.

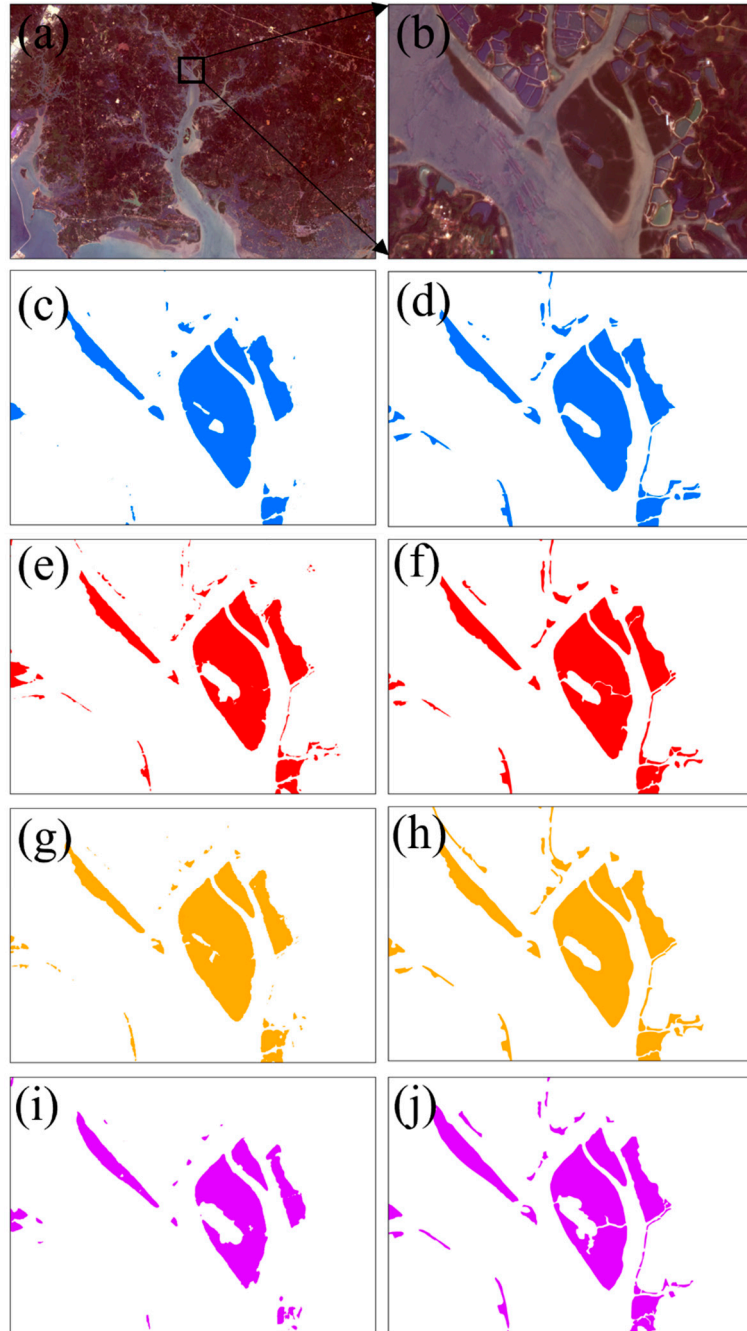


Figure S3: Comparison of the results of hybrid U-Net extraction of mangroves with multi-person interactive validation at DFJ: (a, b) The satellite image of mangrove area at DFJ in 2021 October, (c, e, g, i) The Hybrid U-Net result in 2020, 2019, 2018, 2015. (d, f, h, j) Multiplayer interactive validation in 2020, 2019, 2018, 2015.

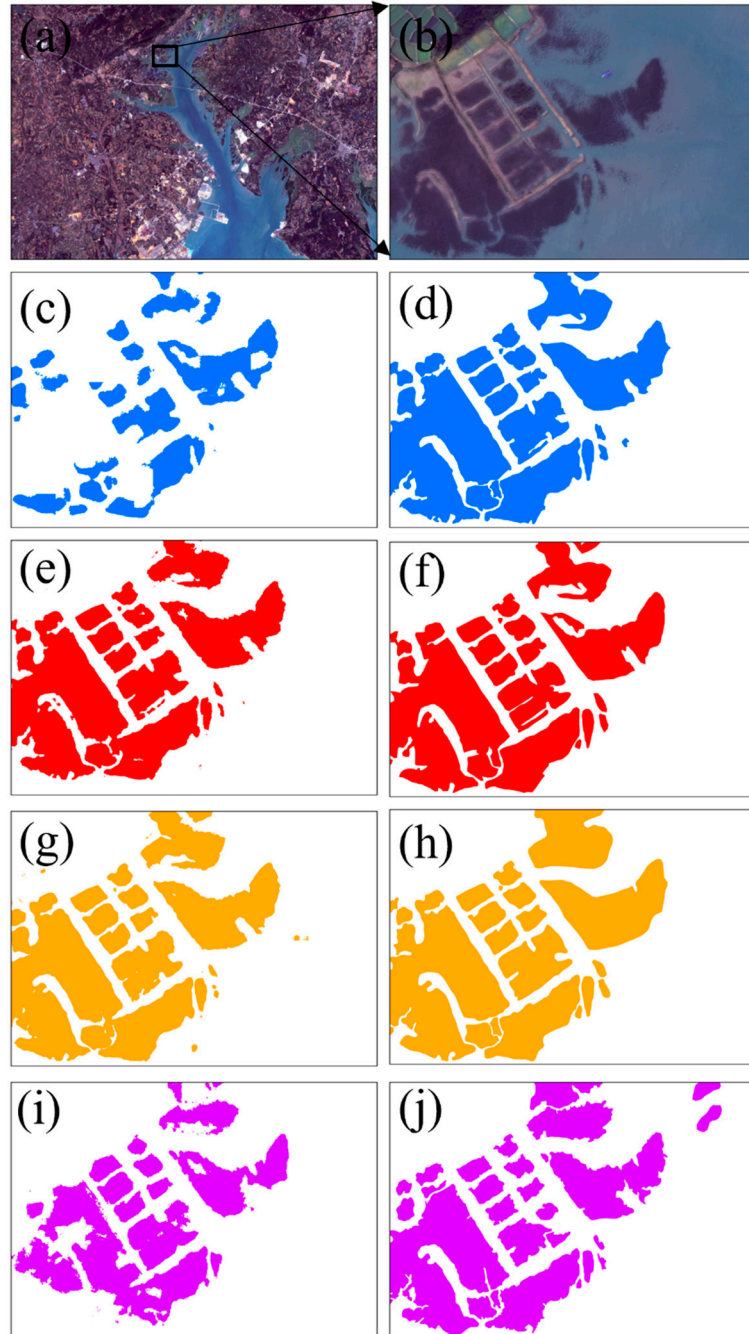


Figure S4: Comparison of the results of hybrid U-Net extraction of mangroves with multi-person interactive validation at TSG: (a, b) The satellite image of mangrove area at TSG in 2021 February, (c, e, g, i) The Hybrid U-Net result in 2020, 2019, 2018, 2015. (d, f, h, j) Multiplayer interactive validation in 2020, 2019, 2018, 2015.

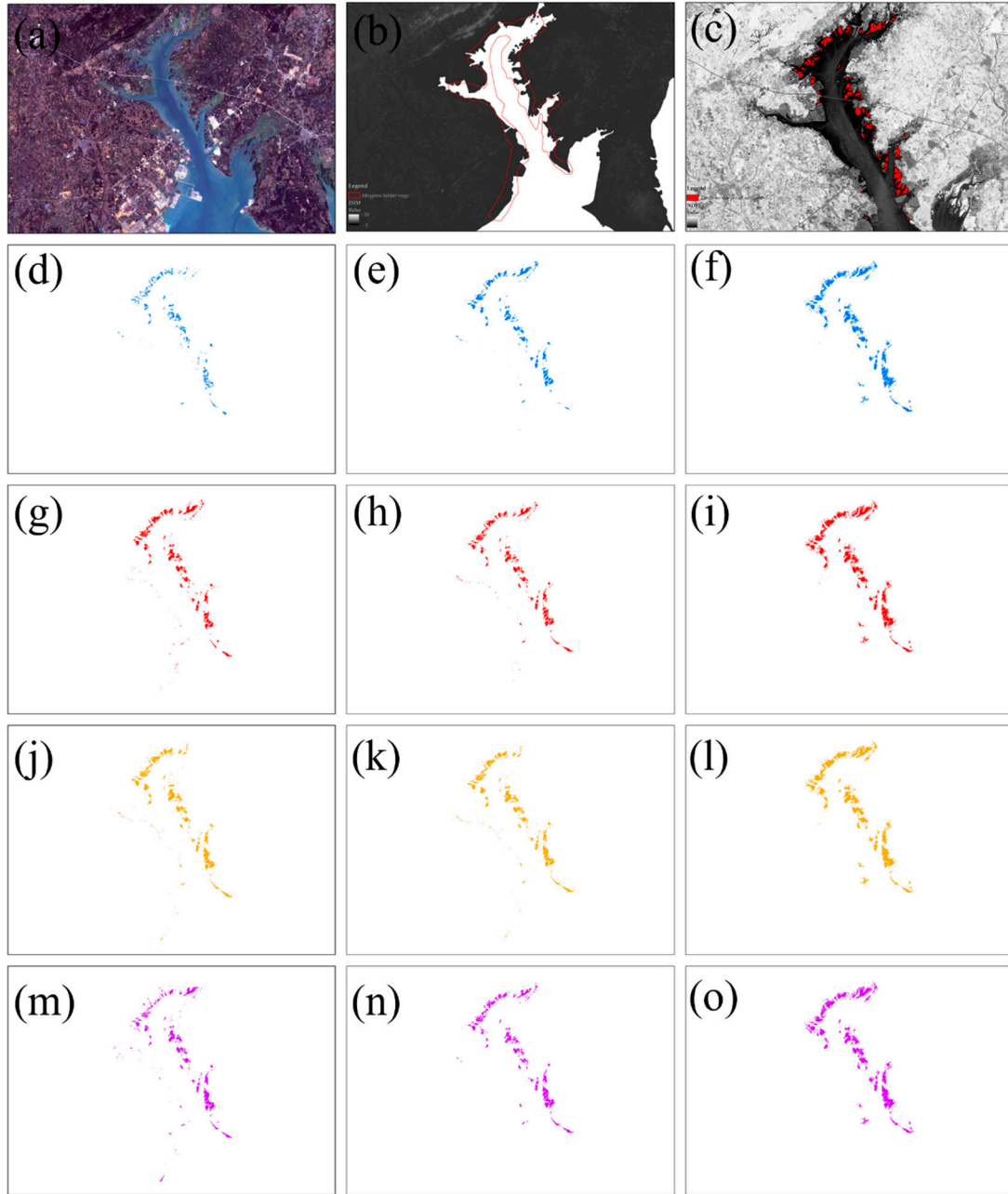


Figure S5: Hybrid U-Net extract mangrove results compare with existing data products. (a) The satellite image of mangrove area at DFJ, (b) Mangrove habitat information, (c) Low tide level acquisition, (d, g, j, m) The Hybrid U-Net result in 2020, 2019, 2018, 2015, (f, i, l, o) The Global Mangrove Watch (GMW) in 2020, 2019, 2018, 2015, (e) LREIS in 2020, (h) TW in 2019, (k) MCina in 2018, (n) CAS in 2015.

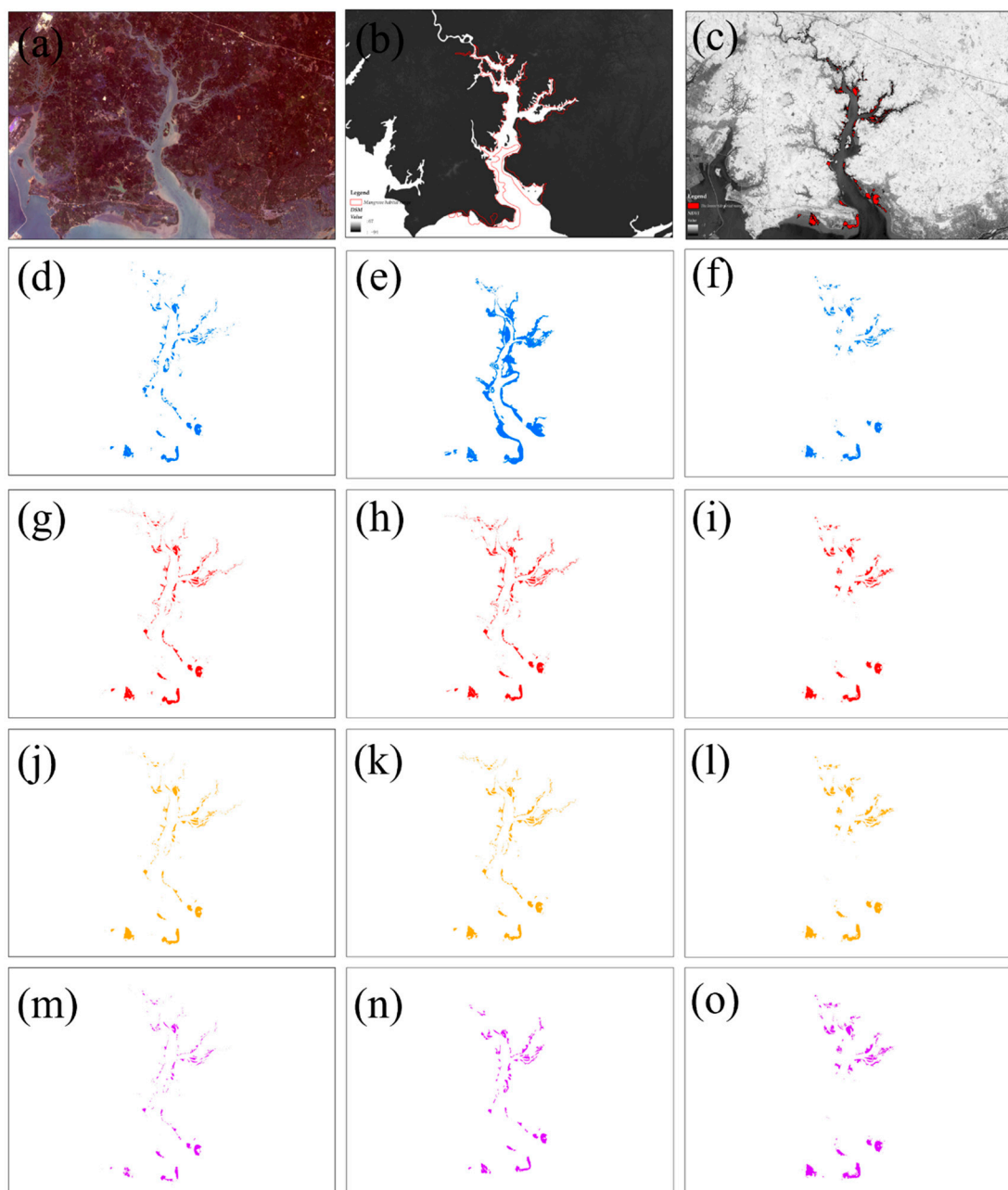


Figure S6: Hybrid U-Net extract mangrove results compare with existing data products. (a) The satellite image of mangrove area at TSG, (b) Mangrove habitat information, (c) Low tide level acquisition, (d, g, j, m) The Hybrid U-Net result in 2020, 2019, 2018, 2015, (f, i, l, o) The Global Mangrove Watch (GMW) in 2020, 2019, 2018, 2015, (e) LREIS in 2020, (h) TW in 2019, (k) MCina in 2018, (n) CAS in 2015.

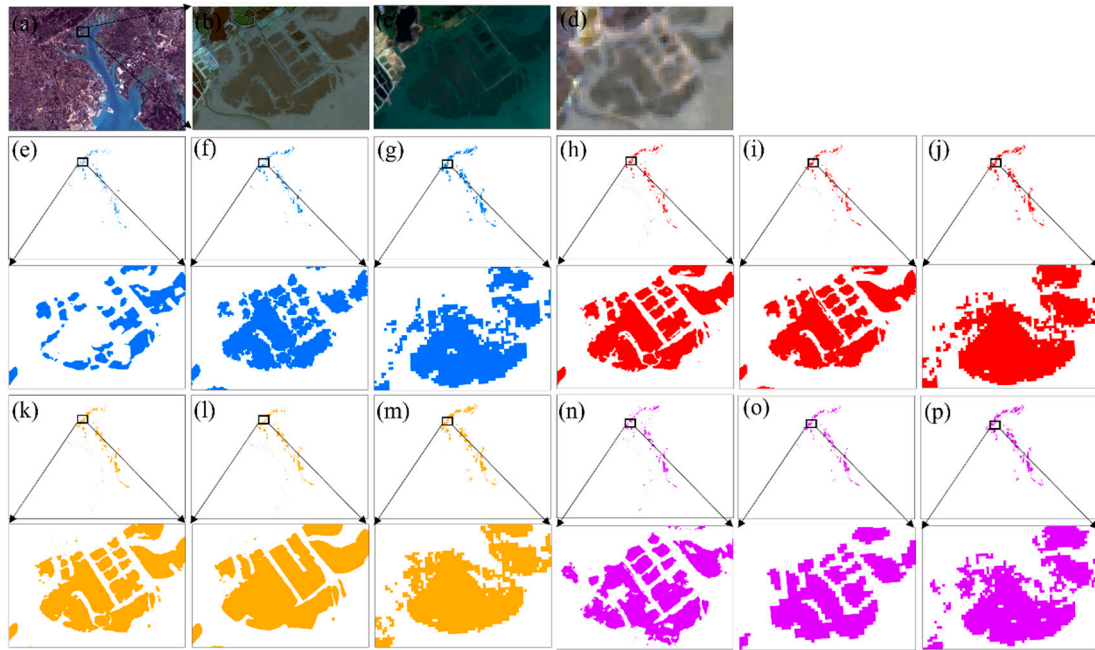


Figure S7: Hybrid U-Net extract mangrove results compare with existing data products. (TSG details). (a) The GF-1 satellite image(2m) of mangrove area at TSG, (b) The GF-1 satellite image(2m) of mangrove area at TSG (details), (c) The Sentinel-2 satellite image(10m) of mangrove area at TSG (details), (d) The Landsat 8 OLI satellite image(30m) of mangrove area at TSG (details), (e, h, k, n) The Hybrid U-Net result in 2020, 2019, 2018, 2015, (g, j, m, p), The Global Mangrove Watch (GMW) in 2020, 2019, 2018, 2015, (f) LREIS in 2020, (i) TW in 2019, (l) MCina in 2018, (o) CAS in 2015.

Table S1. Areal changes (ha) of mangrove forest with hybrid U-Net in the ZZW, DFJ, and TSG area for the 2015, 2018, 2019, 2020 with the base year sub-data products.

Study area	Years	Hybrid U-Net(ha)	Base year sub-data products(ha)	GMW(ha)
ZZW	2015	781.76	834.12	1009.92
	2018	1024.6	947.45	1037.19
	2019	973.52	953.97	1053.54
	2020	929.55	959.91	1091.07
DFJ	2015	750.74	773.28	823.55
	2018	762.75	947.45	840.55
	2019	781.29	953.97	786.46
	2020	855.4	959.91	704.89
TSG	2015	912.19	1037.7	1640.51
	2018	1012.9	1174.79	1706.86
	2019	929.33	981.39	1625.53
	2020	911.88	907.96	1419.5

Supplementary for remote sensing data

Number	Year	Satellite	Sensor	Data	Serial number
1	2015	GF1	PMS1	20150115	GF1_PMS1_E107.7_N21.3_20150115_L1A0000589551
2	2015	GF1	PMS1	20150628	GF1_PMS1_E107.7_N21.3_20150628_L1A0000889029
3	2015	GF1	PMS1	20150115	GF1_PMS1_E107.8_N21.6_20150115_L1A0000589550
4	2015	GF1	PMS1	20150628	GF1_PMS1_E107.8_N21.9_20150628_L1A0000889025
5	2015	GF1	PMS1	20150808	GF1_PMS1_E107.8_N21.9_20150808_L1A0000967688
6	2015	GF1	PMS1	20150115	GF1_PMS1_E107.9_N21.9_20150115_L1A0000589549
7	2015	GF1	PMS1	20150119	GF1_PMS1_E108.4_N21.6_20150119_L1A0000596666
8	2015	GF1	PMS1	20150119	GF1_PMS1_E108.4_N21.9_20150119_L1A0000596665
9	2015	GF1	PMS1	20151217	GF1_PMS1_E108.8_N21.3_20151217_L1A0001250884
10	2015	GF1	PMS1	20151217	GF1_PMS1_E108.8_N21.6_20151217_L1A0001250883
11	2015	GF1	PMS1	20151217	GF1_PMS1_E108.9_N21.9_20151217_L1A0001250882
12	2015	GF1	PMS1	20150419	GF1_PMS1_E109.4_N21.3_20150419_L1A0000759373
13	2015	GF1	PMS1	20150530	GF1_PMS1_E109.4_N21.3_20150530_L1A0000834834
14	2015	GF1	PMS1	20150419	GF1_PMS1_E109.5_N21.6_20150419_L1A0000759372
15	2015	GF1	PMS1	20150530	GF1_PMS1_E109.5_N21.6_20150530_L1A0000834833
16	2015	GF1	PMS1	20150415	GF1_PMS1_E109.5_N21.7_20150415_L1A0000751558
17	2015	GF1	PMS1	20150415	GF1_PMS1_E109.5_N21.9_20150415_L1A0000751557
18	2015	GF1	PMS1	20150419	GF1_PMS1_E109.6_N21.9_20150419_L1A0000759371
19	2015	GF1	PMS1	20150530	GF1_PMS1_E109.6_N21.9_20150530_L1A0000834832
20	2015	GF1	PMS1	20151102	GF1_PMS1_E109.6_N21.9_20151102_L1A0001146856
21	2015	GF1	PMS1	20150824	GF1_PMS1_E110.1_N21.6_20150824_L1A0000995323

22	201 5	GF1	PMS 1	201508 24	GF1_PMS1_E110.2_N21.9_20150824_L1A000099 5322
23	201 5	GF1	PMS 2	201506 28	GF1_PMS2_E108.0_N21.3_20150628_L1A000088 8858
24	201 5	GF1	PMS 2	201506 28	GF1_PMS2_E108.0_N21.5_20150628_L1A000088 8857
25	201 5	GF1	PMS 2	201501 15	GF1_PMS2_E108.1_N21.5_20150115_L1A000058 9635
26	201 5	GF1	PMS 2	201506 28	GF1_PMS2_E108.1_N21.8_20150628_L1A000088 8856
27	201 5	GF1	PMS 2	201508 08	GF1_PMS2_E108.1_N21.8_20150808_L1A000096 7788
28	201 5	GF1	PMS 2	201501 15	GF1_PMS2_E108.2_N21.8_20150115_L1A000058 9634
29	201 5	GF1	PMS 2	201512 17	GF1_PMS2_E109.1_N21.3_20151217_L1A000125 0978
30	201 5	GF1	PMS 2	201512 17	GF1_PMS2_E109.1_N21.5_20151217_L1A000125 0977
31	201 5	GF1	PMS 2	201512 17	GF1_PMS2_E109.2_N21.8_20151217_L1A000125 0976
32	201 5	GF1	PMS 2	201505 30	GF1_PMS2_E109.7_N21.3_20150530_L1A000083 4901
33	201 5	GF1	PMS 2	201504 19	GF1_PMS2_E109.8_N21.3_20150419_L1A000075 9410
34	201 5	GF1	PMS 2	201504 15	GF1_PMS2_E109.8_N21.5_20150415_L1A000075 1433
35	201 5	GF1	PMS 2	201504 19	GF1_PMS2_E109.8_N21.5_20150419_L1A000075 9409
36	201 5	GF1	PMS 2	201505 30	GF1_PMS2_E109.8_N21.5_20150530_L1A000083 4900
37	201 5	GF1	PMS 2	201504 15	GF1_PMS2_E109.8_N21.8_20150415_L1A000075 1432
38	201 5	GF1	PMS 2	201504 19	GF1_PMS2_E109.9_N21.8_20150419_L1A000075 9408
39	201 5	GF1	PMS 2	201505 30	GF1_PMS2_E109.9_N21.8_20150530_L1A000083 4899
40	201 5	GF1	PMS 2	201511 02	GF1_PMS2_E110.0_N21.8_20151102_L1A000114 6977
41	201 5	GF1	PMS 2	201508 24	GF1_PMS2_E110.4_N21.5_20150824_L1A000099 5494
42	201 5	GF1	PMS 2	201508 24	GF1_PMS2_E110.5_N21.8_20150824_L1A000099 5493
43	201 5	ZY3	MUX	201508 24	ZY3_MUX_E109.3_N21.5_20150824_L1A0003202 868

44	201 5	ZY3	MUX	201508 24	ZY3_MUX_E109.4_N21.9_20150824_L1A0003202 867
45	201 5	ZY3	NAD	201508 24	ZY3_NAD_E109.3_N21.5_20150824_L1A0003222 317
46	201 5	ZY3	NAD	201508 24	ZY3_NAD_E109.4_N21.9_20150824_L1A0003203 100
47	201 6	GF1	PMS 1	201602 29	GF1_PMS1_E107.7_N21.6_20160229_L1A000144 2714
48	201 6	GF1	PMS 1	201602 29	GF1_PMS1_E107.8_N21.9_20160229_L1A000144 2717
49	201 6	GF1	PMS 1	201604 18	GF1_PMS1_E108.9_N21.6_20160418_L1A000152 8864
50	201 6	GF1	PMS 1	201604 18	GF1_PMS1_E109.0_N21.9_20160418_L1A000152 8858
51	201 6	GF1	PMS 1	201606 02	GF1_PMS1_E109.5_N21.3_20160602_L1A000161 8645
52	201 6	GF1	PMS 1	201606 02	GF1_PMS1_E109.5_N21.6_20160602_L1A000161 8647
53	201 6	GF1	PMS 1	201606 02	GF1_PMS1_E109.6_N21.9_20160602_L1A000161 8643
54	201 6	GF1	PMS 1	201606 06	GF1_PMS1_E110.0_N21.3_20160606_L1A000162 7449
55	201 6	GF1	PMS 1	201606 06	GF1_PMS1_E110.2_N21.9_20160606_L1A000162 7455
56	201 6	GF1	PMS 1	201610 07	GF1_PMS1_E110.2_N21.9_20161007_L1A000187 1601
57	201 6	GF1	PMS 1	201602 08	GF1_PMS1_E110.7_N21.5_20160208_L1A000139 7816
58	201 6	GF1	PMS 1	201602 08	GF1_PMS1_E110.7_N21.6_20160208_L1A000139 7815
59	201 6	GF1	PMS 1	201612 28	GF1_PMS1_E111.1_N21.6_20161228_L1A000209 4274
60	201 6	GF1	PMS 1	201612 28	GF1_PMS1_E111.2_N21.9_20161228_L1A000209 4280
61	201 6	GF1	PMS 2	201602 29	GF1_PMS2_E108.0_N21.5_20160229_L1A000144 1726
62	201 6	GF1	PMS 2	201602 29	GF1_PMS2_E108.1_N21.8_20160229_L1A000144 1728
63	201 6	GF1	PMS 2	201604 18	GF1_PMS2_E109.2_N21.3_20160418_L1A000152 8973
64	201 6	GF1	PMS 2	201604 18	GF1_PMS2_E109.2_N21.5_20160418_L1A000152 8977
65	201 6	GF1	PMS 2	201604 18	GF1_PMS2_E109.3_N21.8_20160418_L1A000152 8976

66	201 6	GF1	PMS 2	201606 02	GF1_PMS2_E109.8_N21.5_20160602_L1A000161 8765
67	201 6	GF1	PMS 2	201606 02	GF1_PMS2_E109.9_N21.8_20160602_L1A000161 8763
68	201 6	GF1	PMS 2	201606 06	GF1_PMS2_E110.5_N21.8_20160606_L1A000162 7527
69	201 6	GF1	PMS 2	201610 07	GF1_PMS2_E110.5_N21.8_20161007_L1A000187 1620
70	201 6	GF1	PMS 2	201612 28	GF1_PMS2_E111.5_N21.5_20161228_L1A000209 4331
71	201 6	GF1	PMS 2	201612 28	GF1_PMS2_E111.5_N21.8_20161228_L1A000209 4334
72	201 6	GF2	PMS 1	201609 21	GF2_PMS1_E108.2_N21.7_20160921_L1A000184 4006
73	201 6	GF2	PMS 1	201609 21	GF2_PMS1_E108.2_N21.9_20160921_L1A000184 3993
74	201 6	GF2	PMS 2	201609 21	GF2_PMS2_E108.3_N21.5_20160921_L1A000184 3863
75	201 6	GF2	PMS 2	201609 21	GF2_PMS2_E108.4_N21.7_20160921_L1A000184 3861
76	201 6	GF2	PMS 2	201609 21	GF2_PMS2_E108.4_N21.9_20160921_L1A000184 3859
77	201 7	GF1	PMS 1	201710 23	GF1_PMS1_E109.8_N21.6_20171023_L1A000327 1847
78	201 7	GF1	PMS 1	201708 31	GF1_PMS1_E109.8_N21.9_20170831_L1A000257 4251
79	201 7	GF1	PMS 1	201712 24	GF1_PMS1_E109.8_N21.9_20171224_L1A000287 4921
80	201 7	GF1	PMS 1	201710 23	GF1_PMS1_E109.9_N21.9_20171023_L1A000270 0936
81	201 7	GF1	PMS 1	201704 01	GF1_PMS1_E110.5_N21.9_20170401_L1A000227 8914
82	201 7	GF1	PMS 2	201701 26	GF1_PMS2_E108.7_N21.8_20170126_L1A000326 9791
83	201 7	GF1	PMS 2	201712 24	GF1_PMS2_E110.0_N21.5_20171224_L1A000287 5138
84	201 7	GF1	PMS 2	201708 31	GF1_PMS2_E110.1_N21.8_20170831_L1A000257 4326
85	201 7	GF1	PMS 2	201712 24	GF1_PMS2_E110.1_N21.8_20171224_L1A000287 5136
86	201 7	GF1	PMS 2	201710 23	GF1_PMS2_E110.3_N21.8_20171023_L1A000270 1141
87	201 7	GF2	PMS 1	201712 19	GF2_PMS1_E108.5_N21.5_20171219_L1A000286 1833

88	201 7	GF2	PMS 1	201712 19	GF2_PMS1_E108.5_N21.7_20171219_L1A000286 1829
89	201 7	GF2	PMS 1	201712 19	GF2_PMS1_E108.6_N21.9_20171219_L1A000286 1847
90	201 7	GF2	PMS 1	201704 01	GF2_PMS1_E110.2_N21.9_20170401_L1A000227 7714
91	201 7	GF2	PMS 2	201712 19	GF2_PMS2_E108.7_N21.5_20171219_L1A000286 2166
92	201 7	GF2	PMS 2	201712 19	GF2_PMS2_E108.7_N21.7_20171219_L1A000286 2163
93	201 7	GF2	PMS 2	201712 19	GF2_PMS2_E108.8_N21.9_20171219_L1A000286 2161
94	201 7	GF2	PMS 2	201704 01	GF2_PMS2_E110.4_N21.9_20170401_L1A000227 7595
95	201 8	GF1	PMS 1	201802 03	GF1_PMS1_E109.1_N21.3_20180203_L1A000297 8099
96	201 8	GF1	PMS 1	201802 03	GF1_PMS1_E109.2_N21.6_20180203_L1A000297 8095
97	201 8	GF1	PMS 2	201810 07	GF1_PMS2_E108.4_N21.8_20181007_L1A000350 4939
98	201 8	GF1	PMS 2	201802 03	GF1_PMS2_E109.5_N21.5_20180203_L1A000297 8029
99	201 8	GF2	PMS 1	201808 22	GF2_PMS1_E108.0_N21.5_20180822_L2A000379 1677
100	201 8	GF2	PMS 1	201804 01	GF2_PMS1_E108.1_N21.5_20180401_L2A000347 9084
101	201 8	GF2	PMS 1	201809 06	GF2_PMS1_E108.2_N21.5_20180906_L1A000343 6752
102	201 8	GF2	PMS 1	201802 01	GF2_PMS1_E109.1_N21.0_20180201_L1A000297 3830
103	201 8	GF2	PMS 1	201802 01	GF2_PMS1_E109.1_N21.2_20180201_L1A000297 3824
104	201 8	GF2	PMS 1	201802 01	GF2_PMS1_E109.1_N21.4_20180201_L1A000297 3823
105	201 8	GF2	PMS 1	201802 01	GF2_PMS1_E109.2_N21.5_20180201_L1A000297 3825
106	201 8	GF2	PMS 1	201802 01	GF2_PMS1_E109.2_N21.7_20180201_L1A000297 3826
107	201 8	GF2	PMS 1	201802 01	GF2_PMS1_E109.3_N21.9_20180201_L1A000297 3821
108	201 8	GF2	PMS 2	201804 01	GF2_PMS2_E108.3_N21.5_20180401_L1A000309 6670
109	201 8	GF2	PMS 2	201807 04	GF2_PMS2_E108.4_N21.5_20180704_L1A000330 1155

110	201 8	GF2	PMS 2	201802 01	GF2_PMS2_E109.4_N21.5_20180201_L1A000297 3910
111	201 8	GF2	PMS 2	201802 01	GF2_PMS2_E109.4_N21.7_20180201_L1A000297 3905
112	201 8	GF2	PMS 2	201802 01	GF2_PMS2_E109.5_N21.9_20180201_L1A000297 3909
113	201 8	ZY302	TMS	201812 18	ZY302_TMS_E108.8_N21.5_20181218_L1A00008 48155
114	201 8	ZY302	TMS	201812 18	ZY302_TMS_E108.9_N21.9_20181218_L1A00008 56698
115	201 9	GF1	PMS 1	201911 21	GF1_PMS1_E109.8_N21.6_20191121_L1A000440 8904
116	201 9	GF1	PMS 1	201911 21	GF1_PMS1_E109.5_N21.9_20201128_L1A000526 0869
117	201 9	GF1	PMS 1	201911 21	GF1_PMS1_E109.9_N21.9_20191121_L1A000440 8903
118	201 9	GF2	PMS 1	201912 03	GF2_PMS1_E108.8_N21.5_20191203_L1A000444 5382
119	201 9	GF2	PMS 1	201912 03	GF2_PMS1_E108.8_N21.7_20191203_L1A000444 5381
120	201 9	GF2	PMS 1	201912 03	GF2_PMS1_E108.9_N21.9_20191203_L1A000444 5384
121	201 9	GF2	PMS 1	201910 05	GF2_PMS1_E109.2_N21.4_20191005_L1A000429 3228
122	201 9	GF2	PMS 1	201909 25	GF2_PMS1_E109.6_N21.5_20190925_L1A000426 7353
123	201 9	GF2	PMS 1	201909 25	GF2_PMS1_E109.6_N21.7_20190925_L1A000426 7352
124	201 9	GF2	PMS 1	201903 12	GF2_PMS1_E109.7_N21.4_20190312_L1A000387 9242
125	201 9	GF2	PMS 1	201903 12	GF2_PMS1_E109.7_N21.5_20190312_L1A000387 9241
126	201 9	GF2	PMS 2	201911 28	GF2_PMS2_E109.0_N21.5_20191128_L1A000442 7330
127	201 9	GF2	PMS 2	201912 03	GF2_PMS2_E109.0_N21.5_20191203_L1A000444 5589
128	201 9	GF2	PMS 2	201912 03	GF2_PMS2_E109.0_N21.7_20191203_L1A000444 5588
129	201 9	GF2	PMS 2	201911 28	GF2_PMS2_E109.1_N21.7_20191128_L1A000442 7329
130	201 9	GF2	PMS 2	201910 05	GF2_PMS2_E109.4_N21.5_20191005_L1A000429 3321
131	201 9	GF2	PMS 2	201910 05	GF2_PMS2_E109.5_N21.7_20191005_L1A000429 3318

132	201 9	GF2	PMS 2	201909 20	GF2_PMS2_E109.7_N21.7_20190920_L1A000425 6398
133	201 9	GF2	PMS 2	201909 25	GF2_PMS2_E109.8_N21.5_20190925_L1A000426 6799
134	201 9	GF2	PMS 2	201903 12	GF2_PMS2_E109.9_N21.4_20190312_L1A000387 9381
135	201 9	GF2	PMS 2	201903 12	GF2_PMS2_E109.9_N21.5_20190312_L1A000387 9380
136	201 9	ZY302	TMS	201912 02	ZY302_TMS_E108.1_N21.5_20191202_L1A00008 72768
137	201 9	ZY302	TMS	201904 10	ZY302_TMS_E108.2_N21.5_20190410_L1A00008 74614
138	202 0	GF1	PMS 1	202011 28	GF1_PMS1_E109.5_N21.9_20201128_L1A000526 0869
139	202 0	GF1	PMS 1	202010 22	GF1_PMS1_E108.0_N21.6_20201022_L1A000515 8774
140	202 0	GF1	PMS 1	202011 28	GF1_PMS1_E109.5_N21.6_20201128_L1A000526 0870
141	202 0	GF1	PMS 2	202010 22	GF1_PMS2_E108.4_N21.8_20201022_L1A000515 8617
142	202 0	GF1	PMS 2	202011 24	GF1_PMS2_E109.2_N21.5_20201124_L1A000524 5863
143	202 0	GF1	PMS 2	202011 28	GF1_PMS2_E109.8_N21.5_20201128_L1A000526 1248
144	202 0	GF2	PMS 1	202009 04	GF2_PMS1_E108.0_N21.5_20200904_L1A000503 7186
145	202 0	GF2	PMS 1	202009 24	GF2_PMS1_E108.3_N21.5_20200924_L1A000508 3812
146	202 0	GF2	PMS 1	202009 24	GF2_PMS1_E108.3_N21.7_20200924_L1A000508 3809
147	202 0	GF2	PMS 1	202012 07	GF2_PMS1_E108.9_N21.7_20201207_L1A000529 1888
148	202 0	GF2	PMS 1	202011 07	GF2_PMS1_E109.7_N21.5_20201107_L1A000517 0121
149	202 0	GF2	PMS 2	202011 27	GF2_PMS2_E108.1_N21.5_20201127_L1A000525 9987
150	202 0	GF2	PMS 2	202011 27	GF2_PMS2_E108.1_N21.7_20201127_L1A000525 9986
151	202 0	GF2	PMS 2	202009 04	GF2_PMS2_E108.2_N21.5_20200904_L1A000503 7354
152	202 0	GF2	PMS 2	202009 04	GF2_PMS2_E108.2_N21.7_20200904_L1A000503 7355
153	202 0	GF2	PMS 2	202009 24	GF2_PMS2_E108.5_N21.5_20200924_L1A000508 3607

154	2020	GF2	PMS2	20200924	GF2_PMS2_E108.6_N21.7_20200924_L1A0005083603
155	2020	GF2	PMS2	20200924	GF2_PMS2_E108.6_N21.9_20200924_L1A0005083219
156	2020	GF2	PMS2	20201207	GF2_PMS2_E109.1_N21.5_20201207_L1A0005292057
157	2020	GF2	PMS2	20201207	GF2_PMS2_E109.2_N21.7_20201207_L1A0005292056
158	2020	GF2	PMS2	20201107	GF2_PMS2_E109.9_N21.5_20201107_L1A0005170248
159	2020	GF6	PMS	20200901	GF6_PMS_E108.7_N21.7_20200901_L1A1120031893
160	2020	ZY302	TMS	20200130	ZY302_TMS_E108.3_N21.5_20200130_L1A0000856738
161	2020	ZY302	TMS	20200130	ZY302_TMS_E108.4_N21.9_20200130_L1A0000848153
162	2020	ZY302	TMS	20201130	ZY302_TMS_E109.0_N21.9_20201130_L1A0000855203
163	2021	GF1	PMS1	20211128	GF1_PMS1_E108.9_N21.6_20211128_L1A0006087305
164	2021	GF1	PMS1	20211128	GF1_PMS1_E109.0_N22.2_20211128_L1A0006087303
165	2021	GF1	PMS1	20211202	GF1_PMS1_E109.4_N21.3_20211202_L1A0006101803
166	2021	GF1	PMS1	20211202	GF1_PMS1_E109.5_N21.6_20211202_L1A0006101804
167	2021	GF1	PMS1	20211202	GF1_PMS1_E109.5_N21.9_20211202_L1A0006101802
168	2021	GF1	PMS1	20211202	GF1_PMS1_E109.6_N22.2_20211202_L1A0006101801
169	2021	GF1	PMS1	20211206	GF1_PMS1_E110.0_N21.6_20211206_L1A0006113474
170	2021	GF1	PMS1	20211206	GF1_PMS1_E110.1_N21.9_20211206_L1A0006113472
171	2021	GF1	PMS2	20211202	GF1_PMS2_E109.8_N21.5_20211202_L1A0006101062
172	2021	GF1	PMS2	20211202	GF1_PMS2_E109.8_N21.8_20211202_L1A0006101061
173	2021	GF1	PMS2	20211202	GF1_PMS2_E109.9_N22.1_20211202_L1A0006101060
174	2021	GF2	PMS1	20210214	GF2_PMS1_E108.4_N21.5_20210214_L1A0005477261
175	2021	GF2	PMS1	20210214	GF2_PMS1_E108.5_N21.7_20210214_L1A0005477262

176	202 1	GF2	PMS 1	202102 14	GF2_PMS1_E108.5_N21.9_20210214_L1A000547 7259
177	202 1	GF2	PMS 1	202111 12	GF2_PMS1_E109.1_N21.5_20211112_L1A000603 4896
178	202 1	GF2	PMS 1	202112 11	GF2_PMS1_E109.2_N21.4_20211211_L1A000612 7567
179	202 1	GF2	PMS 1	202112 11	GF2_PMS1_E109.2_N21.5_20211211_L1A000612 7565
180	202 1	GF2	PMS 1	202112 11	GF2_PMS1_E109.3_N21.7_20211211_L1A000612 7559
181	202 1	GF2	PMS 1	202112 11	GF2_PMS1_E109.3_N21.9_20211211_L1A000612 7555
182	202 1	GF2	PMS 1	202112 11	GF2_PMS1_E109.3_N22.0_20211211_L1A000612 7548
183	202 1	GF2	PMS 2	202102 14	GF2_PMS2_E108.7_N21.5_20210214_L1A000547 7177
184	202 1	GF2	PMS 2	202102 14	GF2_PMS2_E108.7_N21.7_20210214_L1A000547 7175
185	202 1	GF2	PMS 2	202102 14	GF2_PMS2_E108.7_N21.9_20210214_L1A000547 7176
186	202 1	GF2	PMS 2	202102 14	GF2_PMS2_E108.8_N22.0_20210214_L1A000547 7173
187	202 1	GF2	PMS 2	202111 12	GF2_PMS2_E109.2_N21.3_20211112_L1A000603 4533
188	202 1	GF2	PMS 2	202111 12	GF2_PMS2_E109.3_N21.5_20211112_L1A000603 4532
189	202 1	GF2	PMS 2	202112 11	GF2_PMS2_E109.4_N21.5_20211211_L1A000612 7584
190	202 1	GF2	PMS 2	202112 11	GF2_PMS2_E109.5_N21.7_20211211_L1A000612 7582
191	202 1	GF2	PMS 2	202112 11	GF2_PMS2_E109.5_N21.9_20211211_L1A000612 7576
192	202 1	GF2	PMS 2	202112 11	GF2_PMS2_E109.6_N22.0_20211211_L1A000612 7597
193	202 1	ZY302	TMS	202110 25	ZY302_TMS_E107.6_N21.9_20211025_L1A00009 09458
194	202 1	ZY302	TMS	202110 25	ZY302_TMS_E107.7_N22.3_20211025_L1A00009 09452
195	202 1	ZY302	TMS	202101 13	ZY302_TMS_E107.8_N21.5_20210113_L1A00008 72046
196	202 1	ZY302	TMS	202101 13	ZY302_TMS_E107.8_N21.5_20210113_L1A00009 29194
197	202 1	ZY302	TMS	202103 13	ZY302_TMS_E108.0_N21.9_20210313_L1A00008 10766

198	202 1	ZY302	TMS	202101 18	ZY302_TMS_E108.1_N21.5_20210118_L1A00007 85809
199	202 1	ZY302	TMS	202101 18	ZY302_TMS_E108.2_N21.9_20210118_L1A00007 85745
200	202 1	ZY302	TMS	202101 23	ZY302_TMS_E108.5_N21.5_20210123_L1A00007 87692
201	202 1	ZY302	TMS	202111 09	ZY302_TMS_E108.6_N21.5_20211109_L1A00009 14646
202	202 1	ZY302	TMS	202101 23	ZY302_TMS_E108.6_N21.9_20210123_L1A00007 87708
203	202 1	ZY302	TMS	202111 14	ZY302_TMS_E109.0_N21.1_20211114_L1A00009 16468
204	202 1	ZY302	TMS	202109 11	ZY302_TMS_E109.1_N21.5_20210911_L1A00008 90639
205	202 1	ZY302	TMS	202111 14	ZY302_TMS_E109.1_N21.5_20211114_L1A00009 16466
206	202 1	ZY302	TMS	202111 14	ZY302_TMS_E109.1_N21.9_20211114_L1A00009 16514
207	202 1	ZY302	TMS	202109 11	ZY302_TMS_E109.2_N21.9_20210911_L1A00008 90632
208	202 1	ZY302	TMS	202107 24	ZY302_TMS_E109.3_N21.5_20210724_L1A00008 69367
209	202 1	ZY302	TMS	202107 24	ZY302_TMS_E109.4_N21.9_20210724_L1A00008 69375
210	202 1	ZY302	TMS	202102 07	ZY302_TMS_E109.7_N21.9_20210207_L1A00007 95356
211	202 1	ZY302	TMS	202111 24	ZY302_TMS_E109.9_N21.1_20211124_L1A00009 20650
212	202 1	ZY302	TMS	202102 12	ZY302_TMS_E110.0_N21.1_20210212_L1A00007 97553
213	202 1	ZY302	TMS	202111 24	ZY302_TMS_E110.0_N21.5_20211124_L1A00009 20651
214	202 1	ZY302	TMS	202111 24	ZY302_TMS_E110.0_N21.9_20211124_L1A00009 20679
215	202 1	ZY302	TMS	202102 12	ZY302_TMS_E110.1_N21.5_20210212_L1A00007 97535
216	202 1	ZY302	TMS	202110 01	ZY302_TMS_E110.2_N21.5_20211001_L1A00009 00335
217	202 1	ZY302	TMS	202102 12	ZY302_TMS_E110.2_N21.9_20210212_L1A00007 97586
218	202 0	ZY302	TMS	202001 07	RH_ZY302_TMS_E108.5_N21.5_20220107_L1A0 000939942.dat
219	201 9	GF6	PMS	201911 11	GF6_PMS_E107.7_N21.8_20191111_L1A1119942 375

220	2019	GF6	PMS	20191123	GF6_PMS_E109.4_N21.2_20191123_L1A1119945566
221	2019	GF6	PMS	20191123	GF6_PMS_E109.5_N21.7_20191123_L1A1119945593
222	2020	GF6	PMS	20200901	GF6_PMS_E108.7_N21.7_20200901_L1A1120031893
223	2021	GF6	PMS	20211012	GF6_PMS_E108.2_N21.7_20211012_L1A1120149260
224	2021	GF6	PMS	20211126	GF6_PMS_E108.8_N21.7_20211126_L1A1120161114
225	2021	GF6	PMS	20211130	GF6_PMS_E109.4_N21.7_20211130_L1A1120162354
226	2021	GF6	PMS	20211204	GF6_PMS_E110.0_N21.7_20211204_L1A1120163327