

Supplemental Information

Classification and Identification of Spectral Pixels with Low Maritime Occupancy Using Unsupervised Machine Learning

Dongmin Seo¹, Sangwoo Oh^{1,}, and Daekyoem Lee²*

¹ Maritime Safety and Environmental Research Division, Korea Research Institute of Ships and Ocean Engineering, Yuseong-daero 1312beon-gil, Yuseong-gu, Daejeon 34103, Republic of Korea

² SEASON Co. LTD, Sejong City 20128, Republic of Korea

† Correspondence to:

(S. Oh) E-mail; swoh@kriso.re.kr, Tel; +82-42-866-3615, Fax; +82-42-866-3624, Address; Yuseong-daero 1312beon-gil, Yuseong-gu, Daejeon 34103, Republic of Korea

Color[1] = brown



Color[2] = blue



Color[3] = red



Color[4] = gray



Color[5] = red



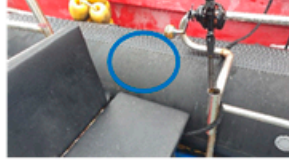
Color[6] = blue



Color[7] = gray



Color[8] = gray



Color[9] = blue



Color[10] = brown



Color[11] = blue



Color[12] = gray



Color[13] = orange



Color[14] = orange



Color[15] = blue



Color[16] = orange



Color[17] = gray



Color[18] = white



Figure S1. Reference image for DBSCAN reference mapping. The circle marked on each image were measured with a field.

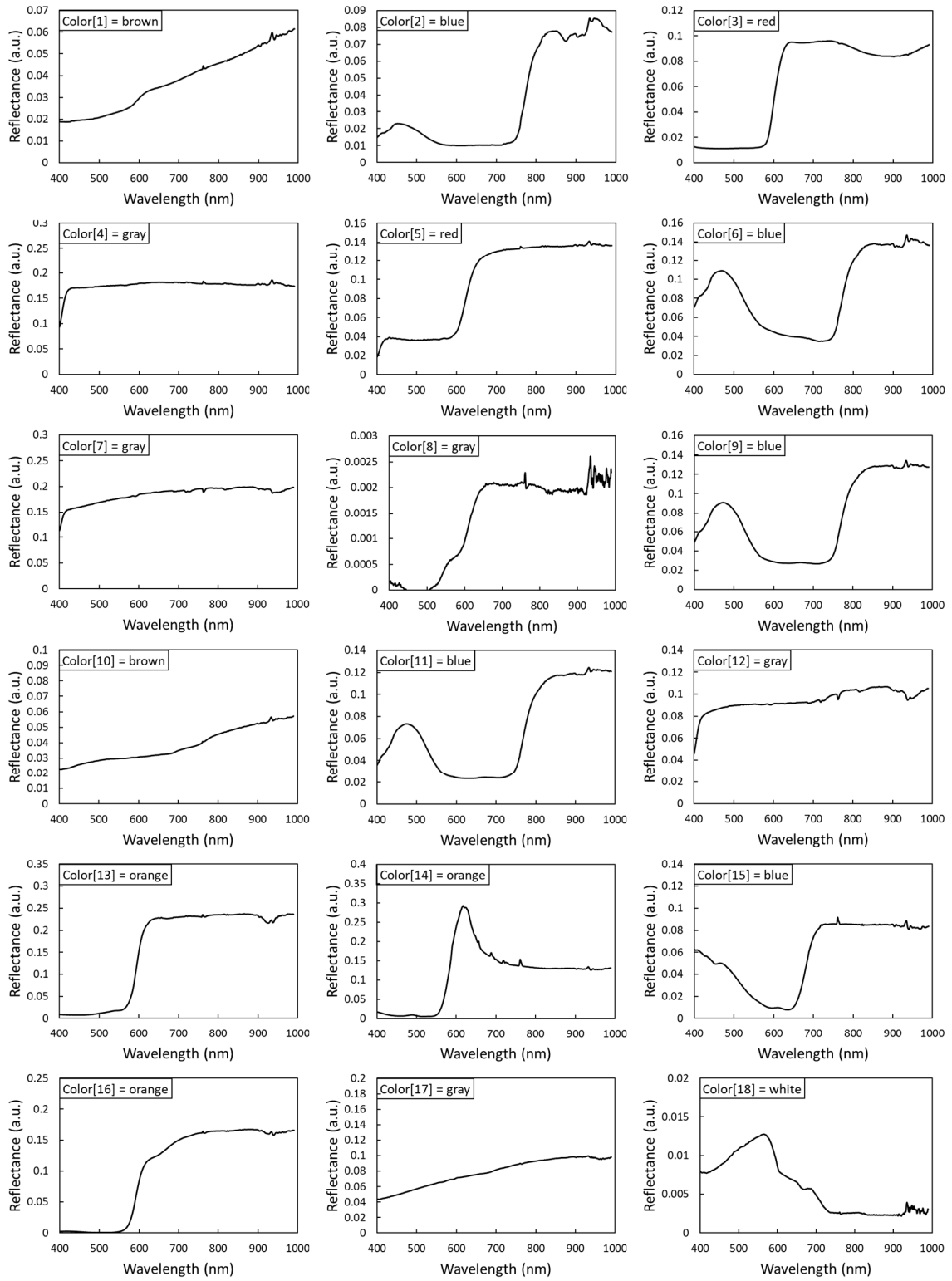


Figure S2. Spectral data for DBSCAN reference mapping.