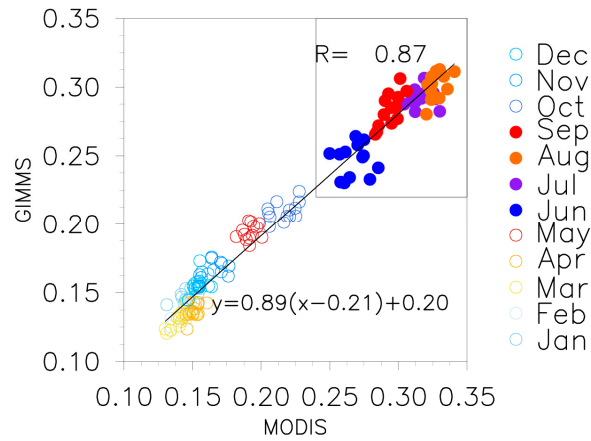


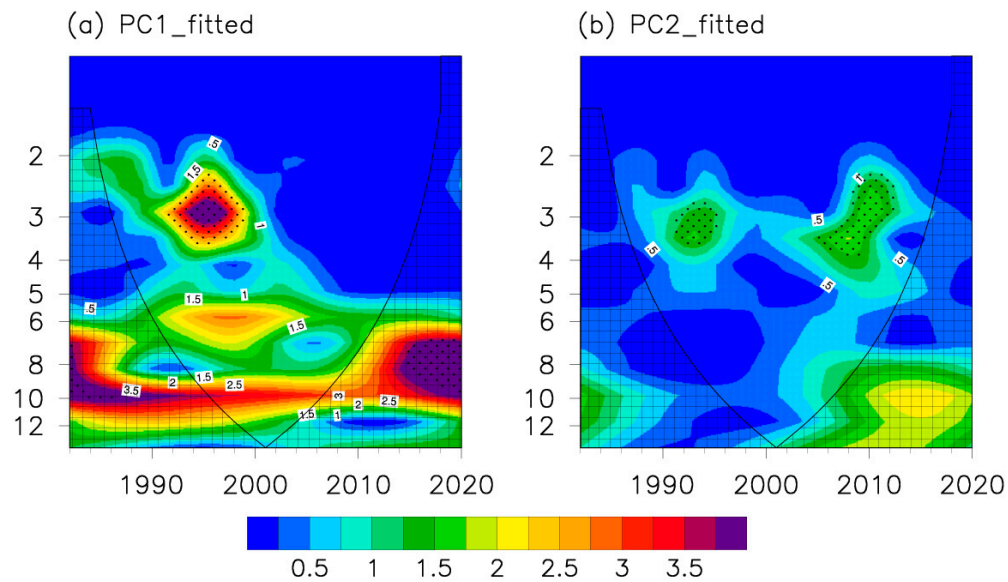
**Supplementary Materials:**



**Figure S1.** Scatter plot of least squares linear regression between the MODIS and GIMMS NDVIs in TP during the period 2002–2014, where the solid black line denotes the fitted regression line.

**Table S1.** Monthly comparison between the GIMMS and MODIS NDVIs over TP during the main growing season (JJAS), in which the parameters for comparison are spatial correlation coefficient (SCC), root mean square error (RMSE), and relative deviation (RD). The superscript “\*” indicates that the correlation coefficients are statistically significant at the 95 % confidence level.

Month	SCC	RMSE	RD
Jun.	0.972*	0.023	3.9%
Jul.	0.969*	0.012	0.3%
Aug.	0.971*	0.011	0.7%
Sep.	0.974*	0.016	–4.7%



**Figure S2.** Wavelet transforms of the PC1 (a) and PC2 (b), in which the periods significant at the 95% confidence level are stippled with black dots.