

Figure S1. The p -value of the Mann-Kendall τ (Figure 4) of the percentage of tree cover (a), non-tree vegetation (b) and bare soil (c) for all the observed pixels classified as broad-leaved forests (BLF) and of the percentage of tree cover (d), non-tree vegetation (e) and bare soil (f) for all the observed plots classified as Bushy sclerophyllous vegetation (BSV) over the 20 years period (2000–2019). The thin black outlines indicate the 17 forests analyzed.

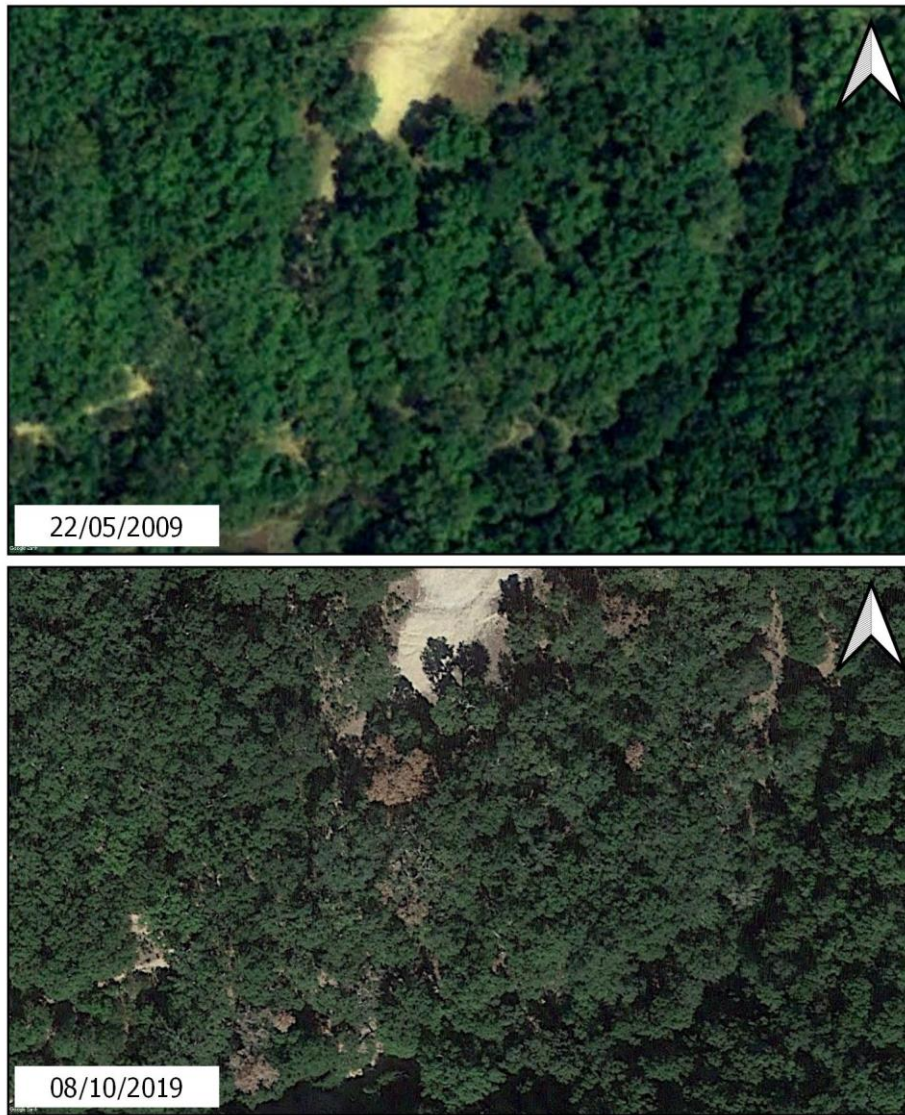


Figure S2. Images of an observation plot (Lat 39°7.610'N, Long 8°52.80'E), located in F5, in two different periods: May 2009 and October 2019, respectively. Comparison of the two pictures makes clear the recent dieback of *Quercus ilex*.



Figure S3. View of recent (photo taken on September 24, 2017) drought-triggered dieback at the Marganai Forest (F7, Lat. 39°20.870'N, Long. 8°34.542'E), located in the southern-west part of the island.