

Supplementary Materials for:

Enhanced understanding of groundwater storage changes under the influence of river basin governance using GRACE data and downscaling model

Jianchong Sun^{1,2}, Litang Hu^{1,2*}, Xin Liu³, Kangning Sun^{1,2}

1. College of Water Sciences, Beijing Normal University, Beijing 100875, China.
2. Engineering Research Center of Groundwater Pollution Control and Remediation of Ministry of Education, Beijing Normal University, Beijing 100875, China.
3. Powerchina Huadong Engineering Corporation Limited, Hangzhou 311122, China.

*Corresponding author:

Litang Hu: litanghu@bnu.edu.cn.

Other authors:

Jianchong Sun

Xin Liu

Kangning Sun

Table S1 Parameter thresholds of the model.

Parameter	Lower value	Upper value
T (m ² /d)	50000	5000000
T_a, T_b	0.1	1
μ	1×10^{-3}	0.1
μ_a, μ_b	0.1	1
α	0.1	0.6
α_a, α_b	0.1	0.8
β	0.1	0.6
β_a, β_b	0.1	0.8
C_h	0.0001	0.03

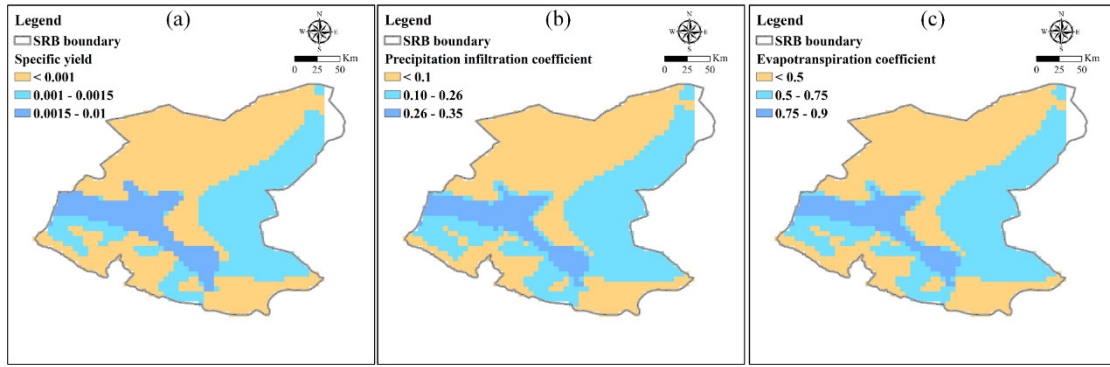


Figure S1. Spatial distribution of (a) comprehensive specific yield, (b) precipitation infiltration coefficients, and (c) evapotranspiration coefficient in the study area.

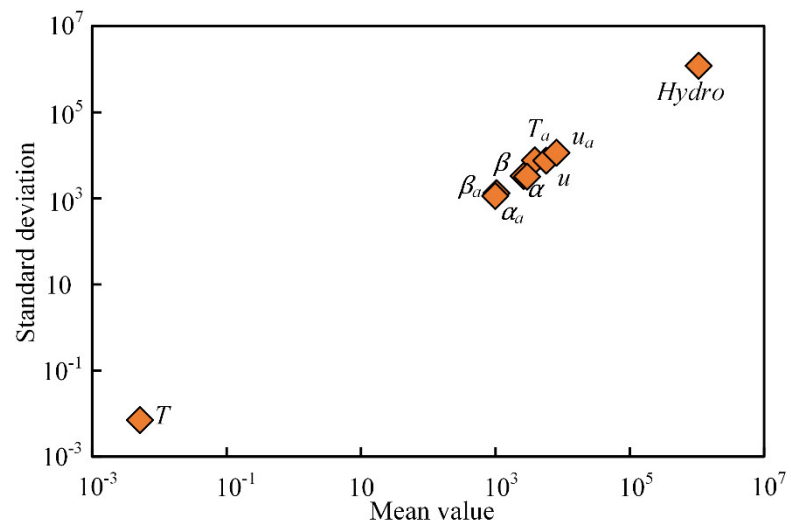


Figure S2. Sensitivities of model parameters.

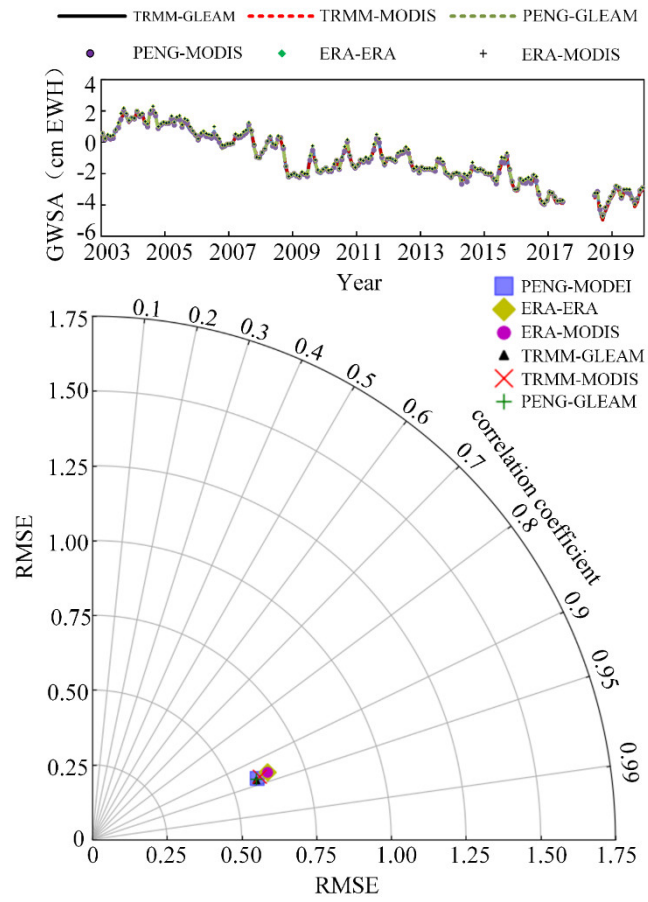


Figure S3. Effects of different forcing data combinations on simulated groundwater storage changes.