

Supplementary Material

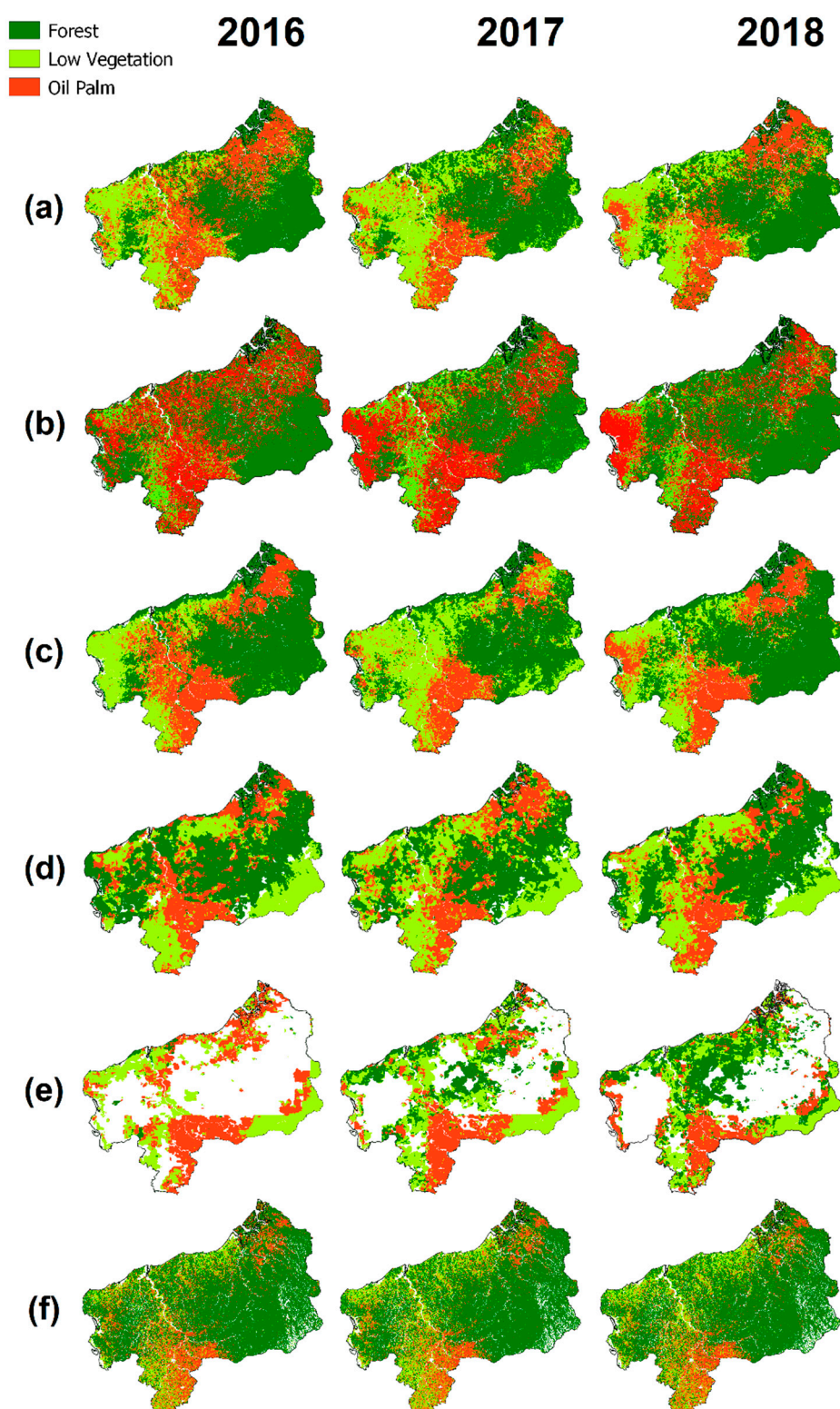


Figure S1. Land cover maps based on optical, thermal, and microwave features across the three years analyzed. (a) Vegetation Indices (VI) maps; (b) Phenology metrics (PHENO) maps; (c) Spectral Reflectance Bands (SRB) maps; (d) Daytime Surface Temperature (DST) maps; (e) Nighttime Surface Temperature (NST) maps; and, (f) Synthetic Aperture Radar (SAR) maps.

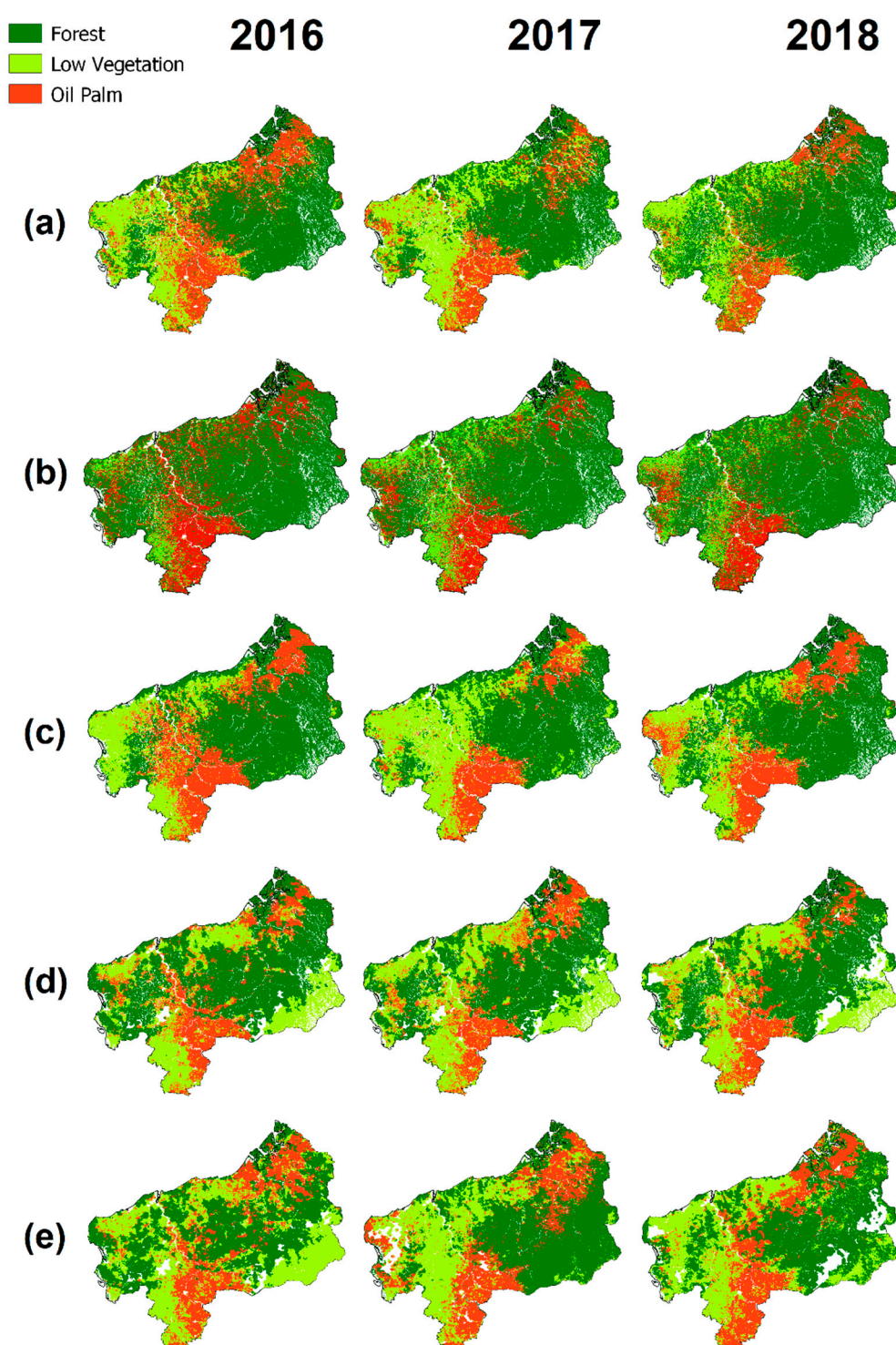


Figure S2. Land cover maps based on data fusion combinations across the three years analyzed. (a) SAR+VI maps; (b) SAR+PHENO maps; (c) SAR+SRB maps; (d) SAR+DST maps; and, (e) VI+DST maps.