

Supplementary

Impacts of saline-alkali land improvement on regional climate: process, mechanisms, and implications

Lingxue Yu ^{1,5}, Jiuchun Yang¹, *, Kun Bu¹, Tingxiang Liu ², Yue Jiao ^{1,3}, Guangshuai Li ^{1,2}, Luoman Pu ⁴ and Shuwen Zhang ¹

¹ Northeast Institute of Geography and Agroecology, Chinese Academy of Sciences, Changchun, China; yulingxue@iga.ac.cn

² College of Geography Science, Changchun Normal University, Changchun, China; liutingxiang@ccsfu.edu.cn

³ Liaoning Normal University, Dalian, China; jiaoyue@iga.ac.cn

⁴ School of Public Administration, Hainan University, Haikou 570228, China; 994424@hainanu.edu.cn

⁵ Changchun Jingyuetan Remote Sensing Observation Station, Chinese Academy of Sciences, Changchun 130102, China

* Correspondence: yangjiuchun@iga.ac.cn

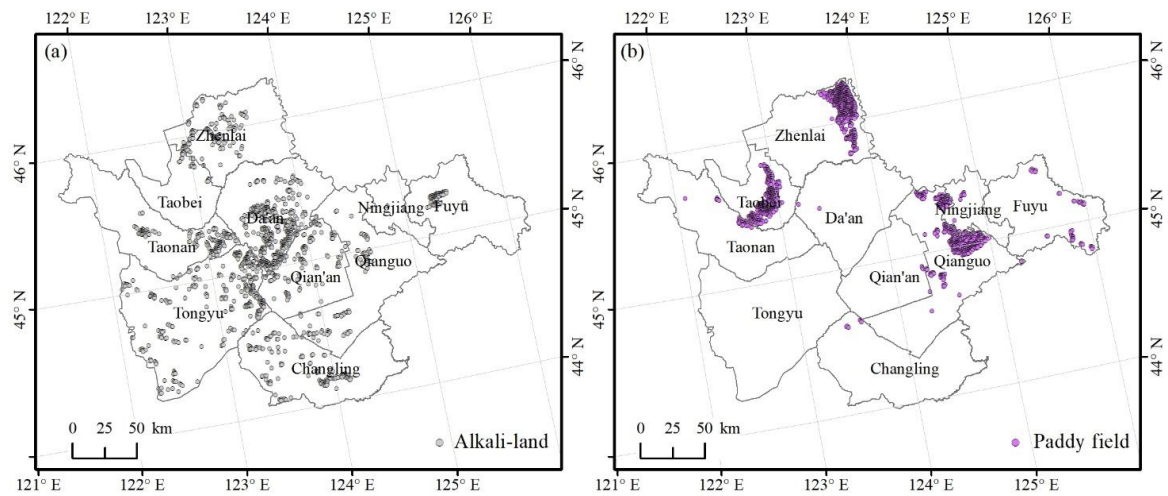


Figure S1. Pure pixels for saline-alkali land (a) and paddy field (b) at a 1 km×1 km spatial resolution.