

Blue and green water footprint of agro-industrial avocado production in central Mexico

Alberto F. Gómez-Tagle ^{1,2,†}, Alberto Gómez-Tagle ^{1,*}, Diana J. Fuerte-Velázquez ³, Alma G. Barajas-Alcalá ¹, Fernando Quiroz-Rivera ^{1,4}, Pablo E. Alarcón-Chaires ^{5,†} and Hilda Guerrero-García-Rojas ⁶

¹ Earth Science Department, Natural Resources Institute (INIRENA), Universidad Michoacana de San Nicolás de Hidalgo, Morelia 58330, Mexico; alma.barajas@umich.mx (A.G.B.-A.); 1215838k@umich.mx (F.Q.-R.)

² Alto-Fresno Ecohydrological Station, Tiro, Morelia 58346, México

³ Graduate Program in Sustainability, Faculty of Economy, Universidad Michoacana de San Nicolás de Hidalgo, Morelia 58030, Mexico; diana.fuerte@umich.mx

⁴ Graduate Program in Integrative Ecology (MCEI), Natural Resources Institute, Universidad Michoacana de San Nicolás de Hidalgo, Morelia 58330, Mexico

⁵ Ecosystem and Sustainability Research Institute (IIES), National Autonomous University of Mexico (UNAM), Morelia 58341, Mexico

⁶ Faculty of Economy, Universidad Michoacana de San Nicolás de Hidalgo, Morelia 58030, Mexico; hilda.guerrero@umich.mx

* Correspondence: algomez@umich.mx; Tel.: +52-443-3272350 (ext. 109).

† Deceased.

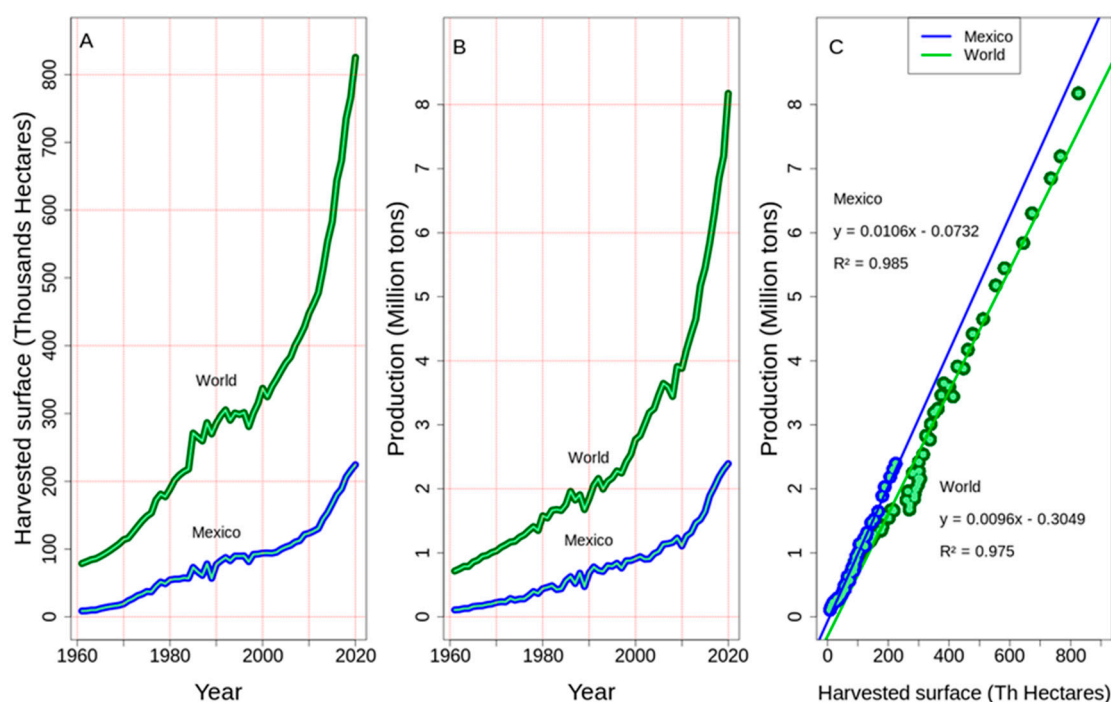


Figure S1. Avocado Mexico production.

Table S1. Mensuales Uruapan Artículo Supplementary Data.

date	Prec (mm)	Tmax (°C)	Tmin (°C)	T.mean (°C)	RH (%)	W.speed (km/hr)
2011-12-15	1.0	18.7	6.9	12.0	68.6	7.1
2012-01-15	0.8	17.9	6.2	11.3	65.5	6.9
2012-02-15	34.4	17.2	7.8	12.0	74.8	6.2
2012-03-15	0.0	20.2	8.1	13.6	62.2	6.9
2012-04-15	0.4	21.9	8.6	15.0	43.8	7.1
2012-05-15	62.4	22.0	10.7	16.0	68.5	6.0
2012-06-15	233.4	20.1	11.2	15.3	82.5	5.2
2012-07-15	414.4	18.9	10.8	14.2	88.1	5.5
2012-08-15	403.2	19.3	11.4	14.7	87.4	6.1
2012-09-15	272.8	19.4	10.8	14.4	87.0	5.9
2012-10-15	71.2	20.0	10.1	14.4	84.9	6.0
2012-11-15	106.4	18.1	8.4	12.7	81.2	6.4
2012-12-15	0.0	18.6	7.0	12.1	69.7	6.9
2013-01-15	31.4	17.4	7.2	11.6	75.7	6.5
2013-02-15	0.6	20.5	7.0	13.1	57.9	7.2
2013-03-15	0.0	20.0	7.5	12.9	46.1	7.2
2013-04-15	0.0	22.8	8.8	15.5	42.6	6.6
2013-05-15	45.0	22.9	10.2	16.0	57.3	6.3
2013-06-15	182.0	20.1	11.6	15.3	87.5	5.3
2013-07-15	284.2	19.3	10.7	14.4	88.5	5.7
2013-08-15	293.0	19.3	10.9	14.5	87.4	6.1
2013-09-15	622.4	18.3	12.1	14.7	92.3	5.5
2013-10-15	107.2	19.7	10.9	14.5	89.2	5.8
2013-11-15	105.0	18.8	9.7	13.5	85.0	6.4
2013-12-15	9.9	18.8	7.1	12.2	75.9	6.6
2014-01-15	17.4	18.3	6.1	11.5	70.3	6.7
2014-02-15	2.2	21.0	7.0	13.3	61.4	7.0
2014-03-15	0.0	21.7	7.2	13.8	59.1	7.1
2014-04-15	3.4	23.3	9.3	15.6	55.9	6.7
2014-05-15	145.8	21.3	9.9	14.9	82.2	5.6
2014-06-15	395.8	19.9	11.3	15.0	91.8	5.0
2014-07-15	261.2	20.2	10.8	14.7	84.5	5.9
2014-08-15	306.2	20.2	10.6	14.7	88.5	5.7
2014-09-15	264.8	19.4	11.4	14.6	91.1	5.9
2014-10-15	232.2	19.9	10.1	14.0	89.0	5.9
2014-11-15	47.0	18.5	8.4	12.7	81.6	5.9
2014-12-15	1.0	18.4	6.8	11.7	75.3	6.5
2015-01-15	19.6	18.8	7.6	12.3	72.2	6.5
2015-02-15	43.2	18.9	6.8	11.9	73.6	6.5
2015-03-15	289.6	19.1	7.5	12.4	76.5	6.4
2015-04-15	9.4	22.1	9.5	15.0	70.4	6.2
2015-05-15	145.4	21.6	10.8	15.4	81.8	5.5
2015-06-15	347.0	20.1	11.6	14.9	91.0	5.1
2015-07-15	257.6	20.5	10.9	14.7	87.6	5.7
2015-08-15	249.6	20.7	11.0	14.8	89.9	5.6
2015-09-15	291.2	19.9	11.1	14.6	93.4	5.4
2015-10-15	571.4	20.2	10.9	14.8	90.0	5.7
2015-11-15	59.0	20.9	10.5	14.8	87.5	6.0
2015-12-15	15.6	18.5	8.0	12.5	83.8	6.3
2016-01-15	18.4	17.8	4.5	10.6	68.0	6.8
2016-02-15	0.0	20.7	6.1	12.7	63.6	6.9
2016-03-15	36.8	20.2	6.2	12.7	64.3	6.8
2016-04-15	0.2	23.7	8.8	15.8	48.9	6.9
2016-05-15	49.0	24.5	10.3	16.9	70.2	5.7
2016-06-15	296.0	20.7	10.1	14.8	88.8	5.0
2016-07-15	235.6	20.5	10.1	14.8	88.5	5.3
2016-08-15	291.4	20.3	10.4	14.7	91.4	5.3
2016-09-15	335.4	20.2	10.1	14.4	92.1	5.7
2016-10-15	144.8	20.5	9.5	14.3	87.8	5.9

2016-11-15	90.8	19.1	8.1	13.0	85.6	6.1
2016-12-15	33.0	19.5	7.3	12.9	76.2	6.6
2017-01-15	0.0	19.3	5.0	11.5	65.5	7.0
2017-02-15	3.6	20.3	5.5	12.2	60.5	7.1
2017-03-15	4.2	21.8	7.1	13.8	62.9	6.7
2017-04-15	0.0	23.8	7.5	15.2	42.8	7.0
2017-05-15	14.2	24.5	9.6	16.7	66.2	6.1
2017-06-15	272.6	21.2	10.8	15.5	91.8	4.9
2017-07-15	456.6	20.0	10.2	14.4	92.1	5.1
2017-08-15	555.6	20.2	11.0	15.0	94.0	5.4
2017-09-15	311.8	20.0	10.7	14.7	94.4	5.3
2017-10-15	94.6	20.8	9.5	14.6	87.0	6.2
2017-11-15	11.8	20.5	6.8	13.0	80.0	6.7
2017-12-15	0.0	19.0	6.3	11.9	74.8	6.6
2018-01-15	32.6	18.8	5.7	11.5	70.2	6.8
2018-02-15	3.0	20.0	7.3	12.9	75.4	6.4
2018-03-15	6.0	22.9	7.7	14.5	60.2	6.9
2018-04-15	0.0	23.7	8.2	15.5	54.8	6.5
2018-05-15	143.2	22.8	9.9	15.8	83.2	5.5
2018-06-15	95.8	20.5	10.7	15.3	91.3	4.3