

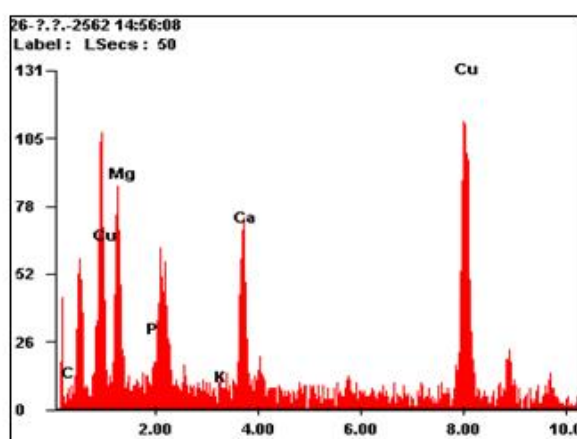
Supplementary information:

Development of bio-electrochemical reactor for groundwater purification:

Effect of electric current and water hardness

Khakhanang Ratananikom, Prarunchaya Peungtim, Patcharaporn Phuinthiang,
Aupatham Nakaruk, and Wilawan Khanitchaidecha

Corresponding Authors: wilawank1@gmail.com



<i>Element</i>	<i>Wt%</i>	<i>At%</i>
<i>C</i>	06.41	20.75
<i>Mg</i>	16.80	26.87
<i>P</i>	03.57	04.48
<i>K</i>	00.58	00.57
<i>Ca</i>	08.06	07.82
<i>Cu</i>	64.58	39.52

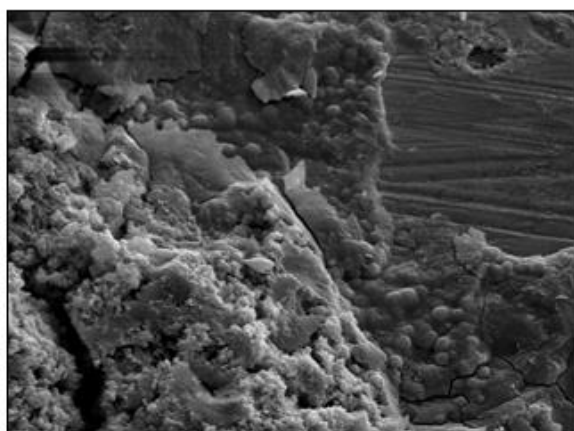
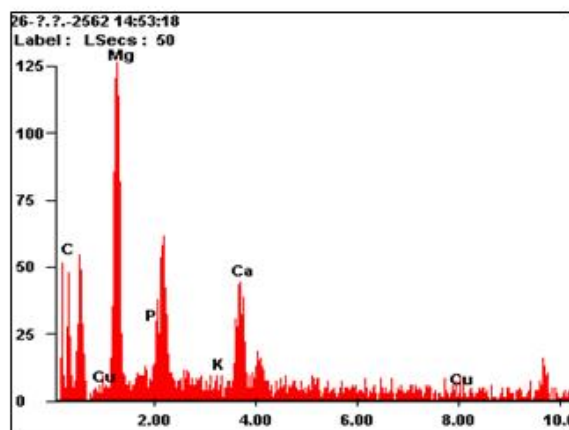


Figure S1. SEM-EDS analysis in the biofilm of BER-10



<i>Element</i>	<i>Wt%</i>	<i>At%</i>
<i>C</i>	57.43	77.12
<i>Mg</i>	22.83	15.15
<i>P</i>	04.02	02.09
<i>K</i>	00.26	00.11
<i>Ca</i>	10.79	04.34
<i>Cu</i>	04.68	01.19

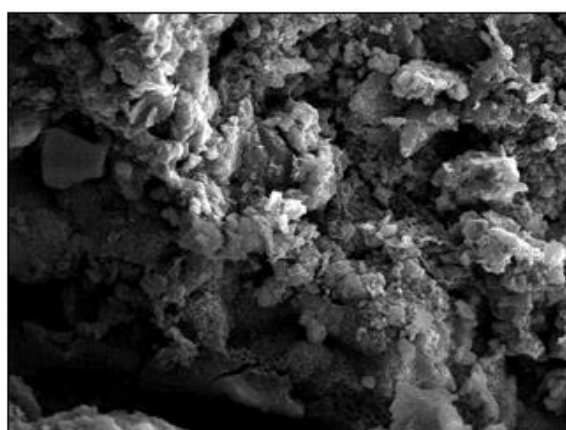


Figure S2. SEM-EDS analysis in the biofilm of BER-20