

Supplementary

Locomotion of Slope Geohazards Responding to Climate Change in the Qinghai-Tibetan Plateau and Its Adjacent Regions

Yiru Jia ^{1,2}, Jifu Liu ^{1,2}, Lanlan Guo ^{2,3,*}, Zhifei Deng ², Jiaoyang Li ² and Hao Zheng ²

¹ Key Laboratory of Environmental Change and Natural Disaster, Academy of Disaster Reduction and Emergence Management, Faculty of Geographical Science, Beijing Normal University, Beijing 100875, China; yirujia@mail.bnu.edu.cn (Y.J.); liujifu@bnu.edu.cn (J.L.)

² Faculty of Geographical Science, Beijing Normal University, Beijing 100875, China; 201531480026@mail.bnu.edu.cn (Z.D.); 201821051182@mail.bnu.edu.cn (J.L.); zhenghao@mail.bnu.edu.cn (H.Z.)

³ State Key Laboratory of Earth Surface Processes and Resource Ecology, Beijing Normal University, Beijing 100875, China

* Correspondence: guolanlan@bnu.edu.cn; Tel.: +010-58804674

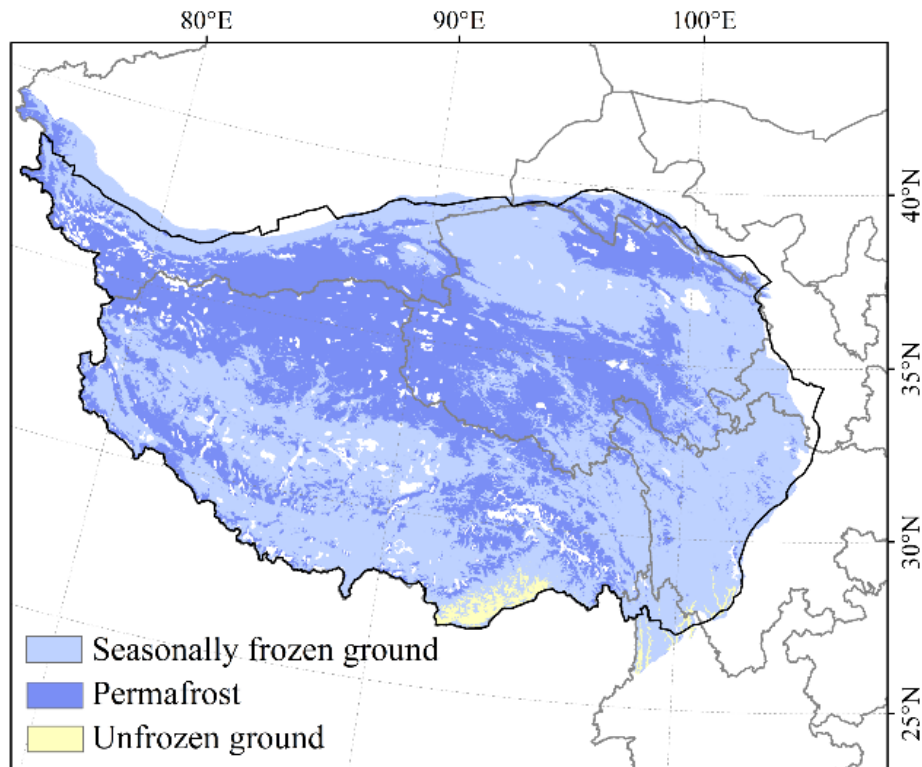


Figure S1. Spatial distribution of the field survey regions of the QTP.

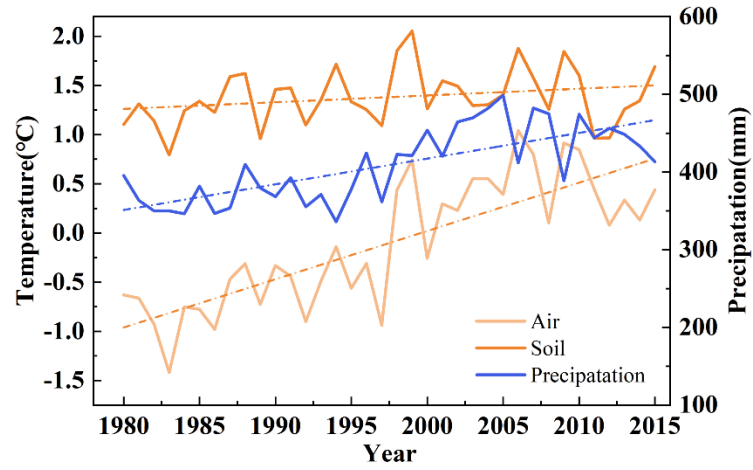


Figure S2. Changes of temperature and precipitation over the QTP, 1980-2015.

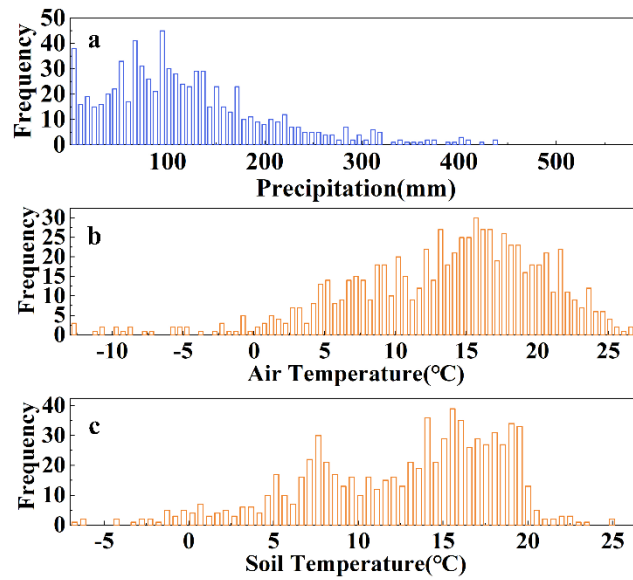


Figure S3. (a)precipitation, (b)air temperature and (c)soil temperature in the month when the slope geohazards occurred.

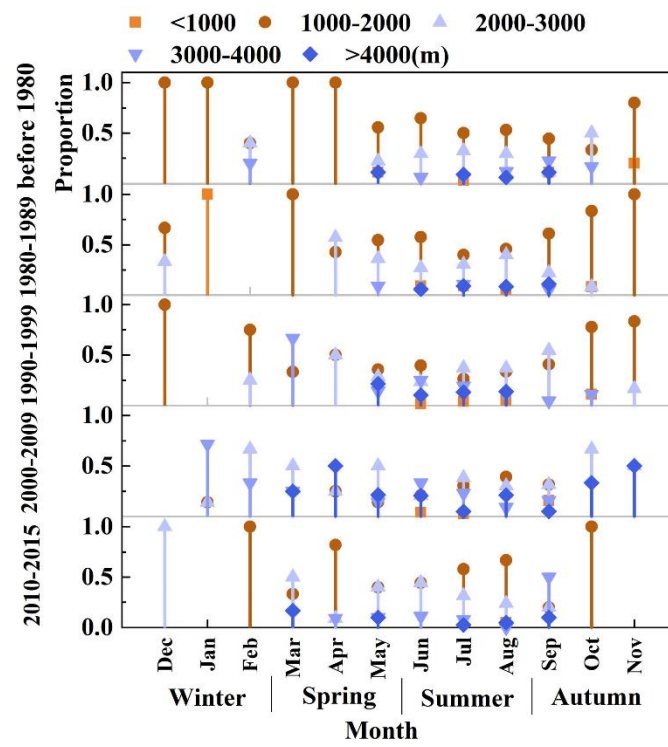


Figure S4. The proportion of slope geohazards occurring at different elevations in 4 periods.

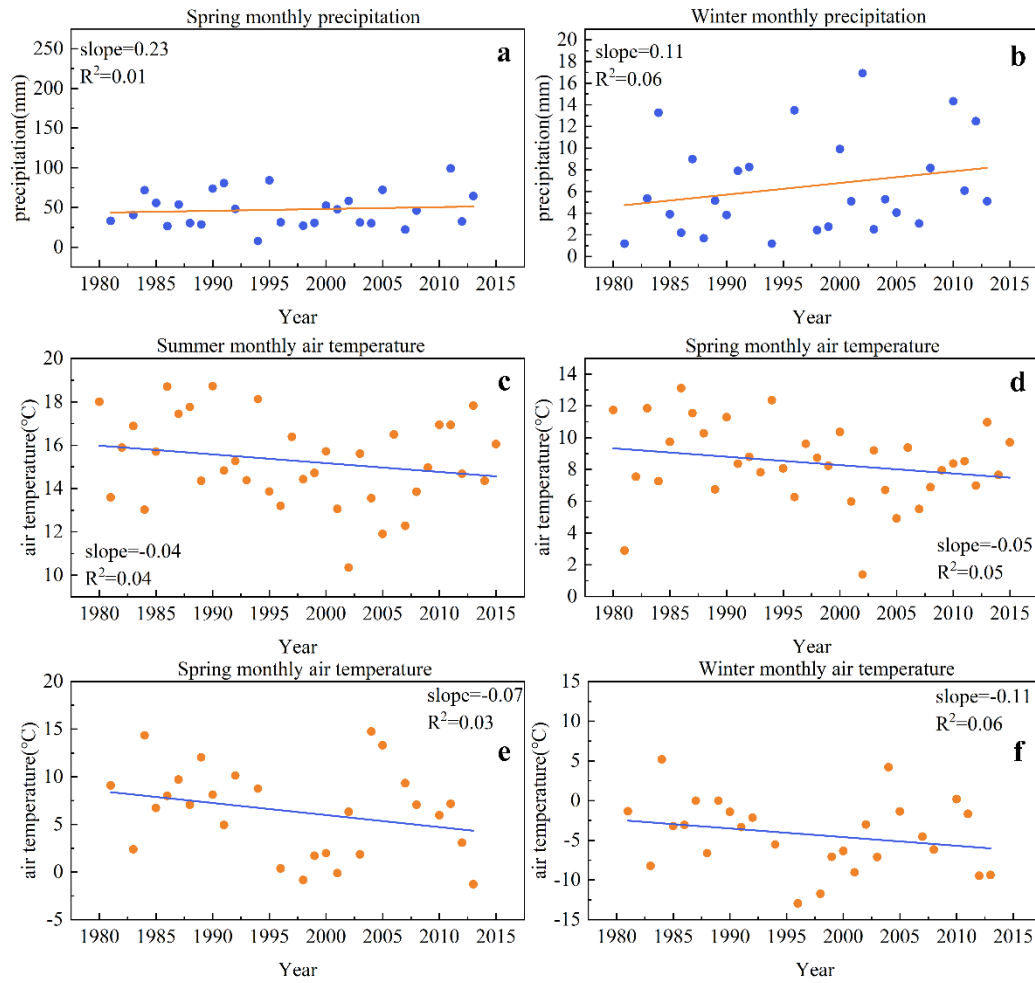


Figure S5. Changes of precipitation and temperature in different seasons of geohazards in different years. (a) spring monthly precipitation in the area of spring geohazards; (b) winter monthly precipitation in the area of spring geohazards; (c) summer monthly air temperature in the area of the summer geohazards; (d) spring monthly air temperature in the area of the summer geohazards; (e) spring monthly air temperature in the area of the spring geohazards; (f) winter monthly air temperature in the area of the spring geohazards.

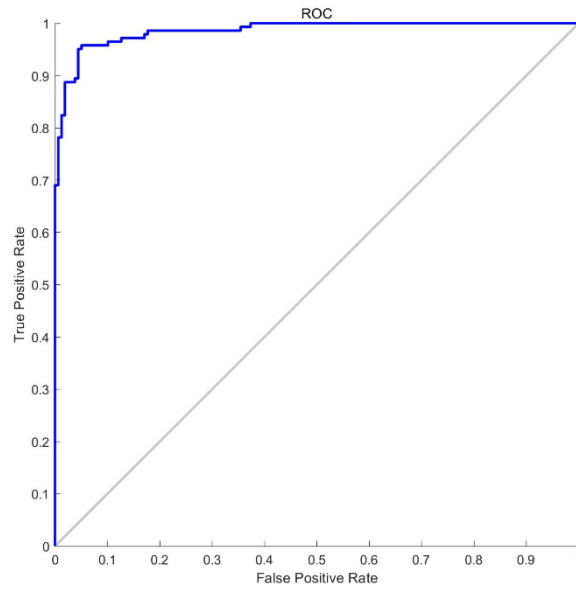


Figure S6. The ROC curve of the random forest model in this study.

Table S1. Eight CMIP5 models were used in this study.

Model	Institute	Country	Resolution
BCC-CSM1.1-M	BCC	China	320×160
MIROC5	MIROC	Japan	256×180
IPSL-CM5A-MR	IPSL	France	144×143
ACCESS1.0	CSIRO-BOM	Australia	192×145
MRI-CGCM3	MRI	Japan	320×160
INM-CM4	INM	Russia	180×120
HAD-GEM2-CC	MOHC	Britain	192×145
HAD-GEM2-ES	MOHC	Britain	192×145