

Supplementary material for Article

Pyrolysis of solid digestate from sewage sludge and lignocellulosic biomass: kinetic and thermodynamic analysis, characterization of biochar

Aleksandra Petrovič^{1*}, Sabina Vohl¹, Tjaša Cencič Predikaka², Robert Bedoić³, Marjana Simonič¹, Irena Ban¹ and Lidija Čuček¹

¹ Faculty of Chemistry and Chemical Engineering, University of Maribor, Smetanova ul. 17, 2000 Maribor, Slovenia; lidija.cucek@um.si (L.Č.)

² IKEMA d.o.o., Institute for chemistry, ecology, measurements and analytics, Lovrenc na Dravskem polju 4, 2324 Lovrenc na Dravskem polju, Slovenia; tjasa@ikema.si (T.C.P.)

³ Faculty of Mechanical Engineering and Naval Architecture, University of Zagreb, Ul. Ivana Lučića 5, 10000 Zagreb, Croatia; robert.bedoic@fsb.hr (R.B.)

* Correspondence: aleksandra.petrovic@um.si

Table S1: Composition of the digestate mixtures D1 and D2.

Digestate	Inoculum (g d.m.)	Sewage sludge (g d.m.)	<i>Typha latifolia</i> plant (g d.m.)	Cattle rumen fluid (mL)
D1	15	15	/	50
D2	15	7.5	7.5	50

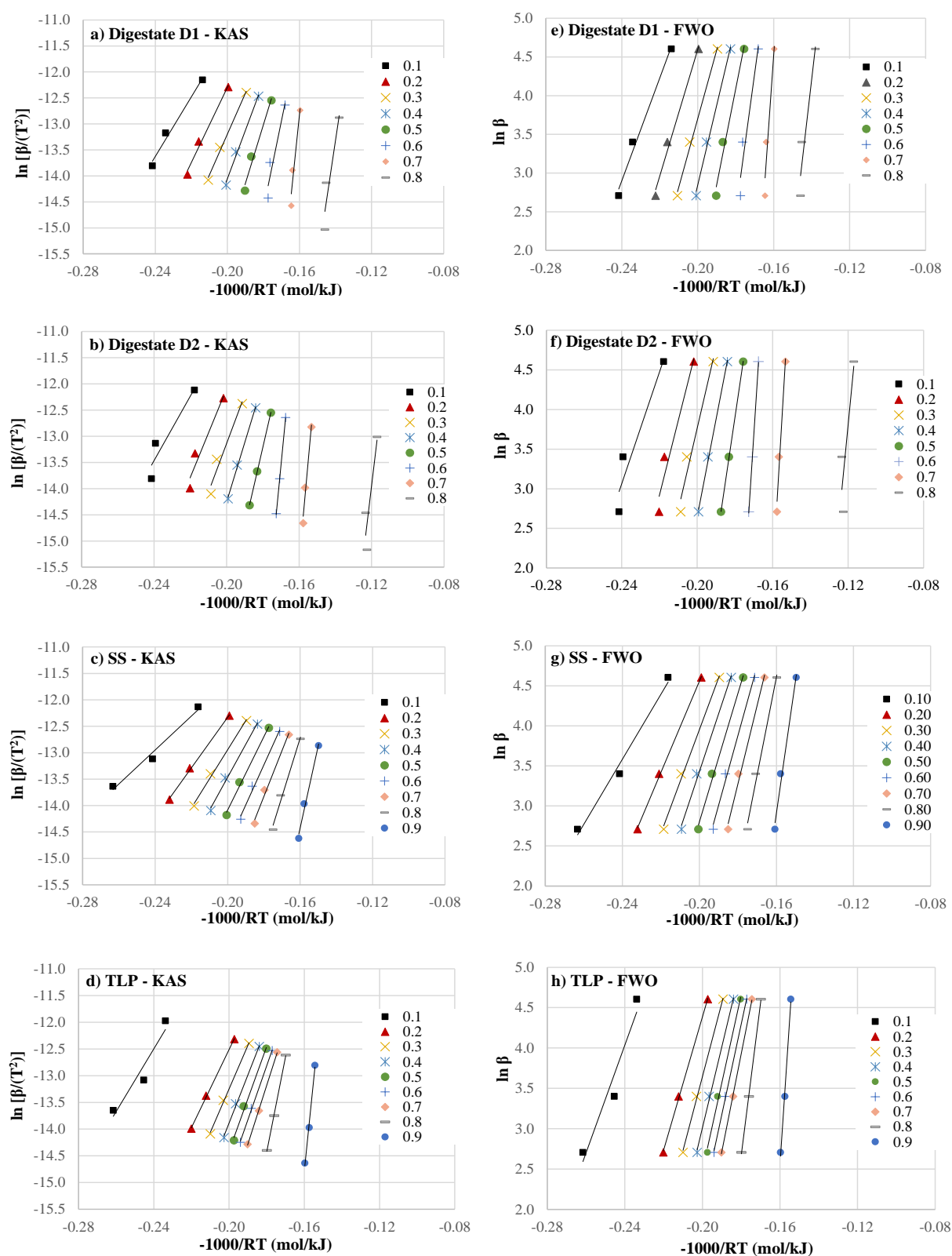


Figure S1. Linear fit plots for FWO (a-d) and KAS method (e-h) to determine activation energy values for digestate D1 (a, e), digestate D2 (b, f), sewage sludge (c, g), and *T. latifolia* (d, h).

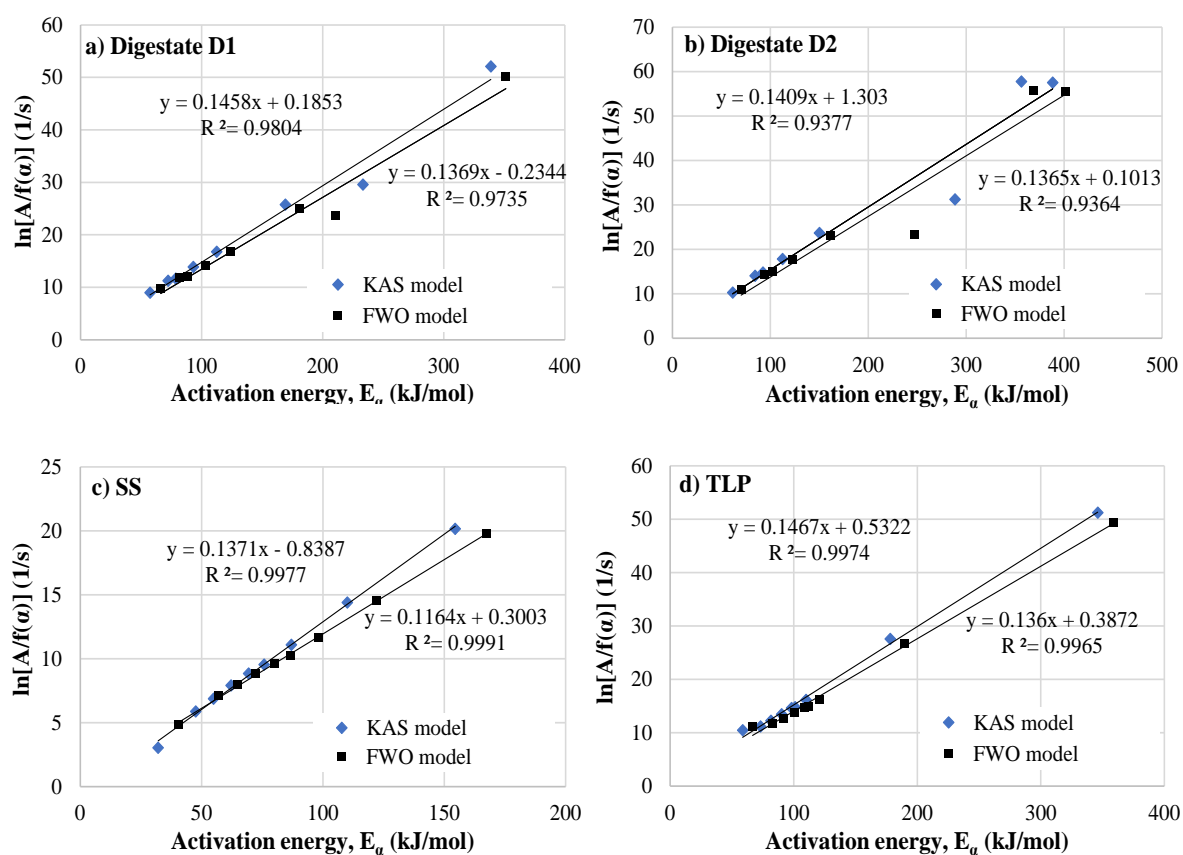


Figure S2. Linear fit plots for the compensation effects between the pre-exponential factors $\ln(A/f(\alpha))$ and the activation energy E_α for: a) digestate D1 b) digestate D2 c) sewage sludge and d) *T. Latifolia*

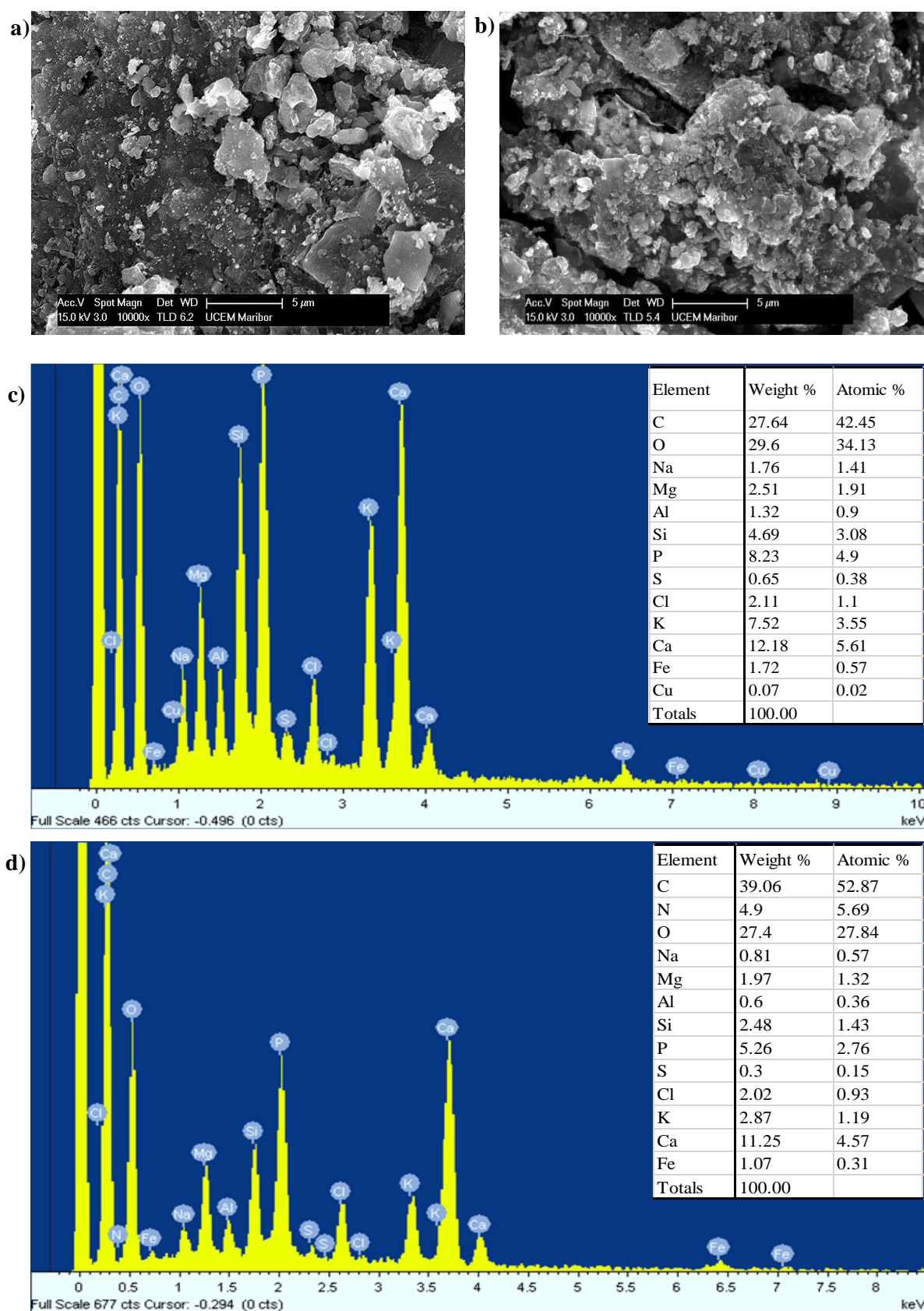


Figure S3. SEM images of biochars B-D1 (a) and B-D2 (b), and EDS spectra of biochars B-D1 (c) and B-D2 (d).

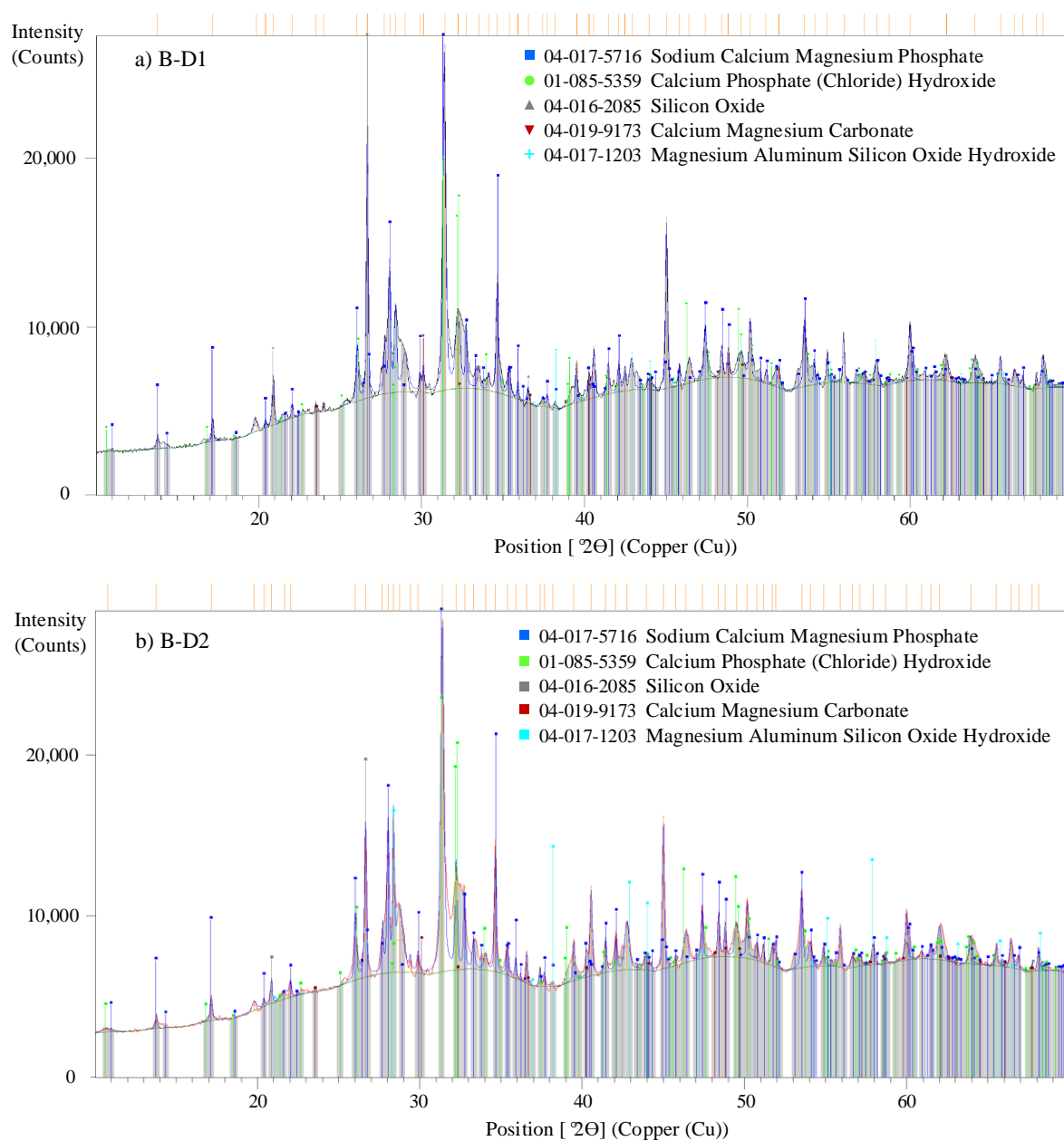


Figure S4. The XRD diffractograms of biochars B-D1 (a) and B-D2 (b).