

Queiroz et al. Genetic diversity and structure of Portuguese pear (*Pyrus communis* L.) germplasm

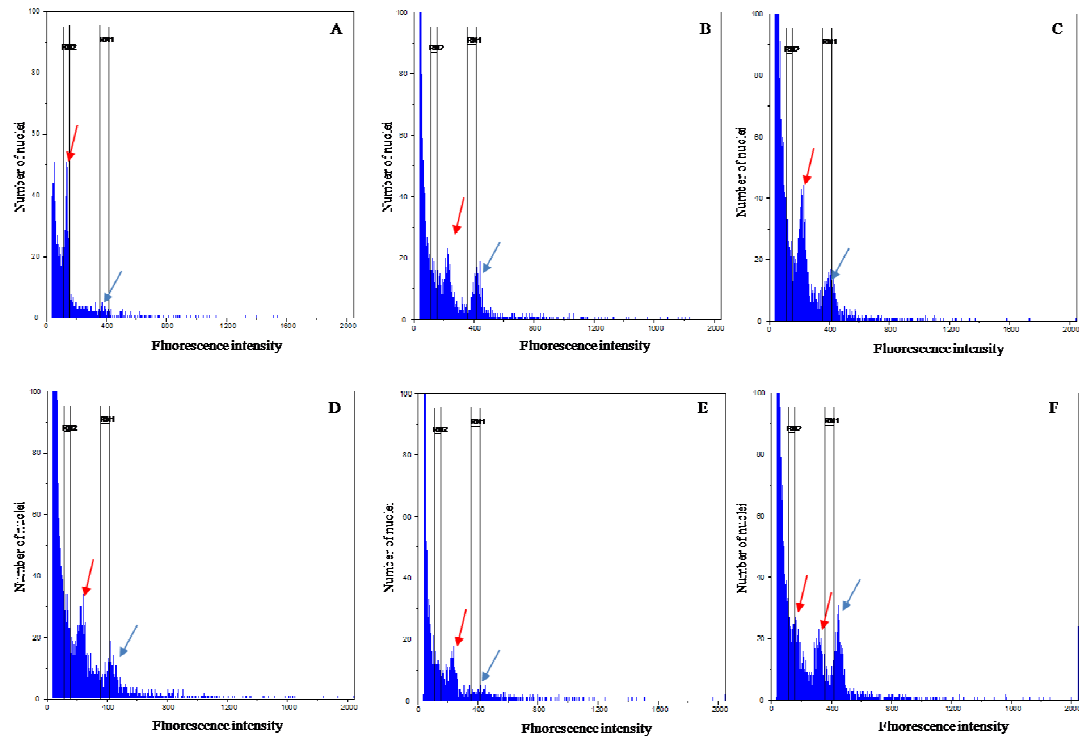


Figure S2.– Flow cytometric histograms of relative fluorescence intensities of stained nuclei simultaneous isolated from: A – *P. communis*(commercial variety “Conference” diploid -2x) and the plant reference standard *Pachysandra communis* P, $2c=0.37pg$; B – “Corada Parda” (V07) and the plant DNA reference *Pachysandra*; C – “Marquesinha” (S18) and the plant DNA reference *Pachysandra*; D – “Baguim” (V39) and the plant DNA reference *Pachysandra*; E – “Pera Cabaça” (V26) and plant DNA reference *Pachysandra*; F – “Rocha 77” (mixoploid: 20% diploid – 2x and 40% tetraploid – 4x) and plant DNA reference *Pachysandra*. The control 2x sample has a relative DNA ratio with *Pachysandra* of 0.37. Blue arrow *Pachysandra* peak (RN1). Red arrow sample peak (RN2).