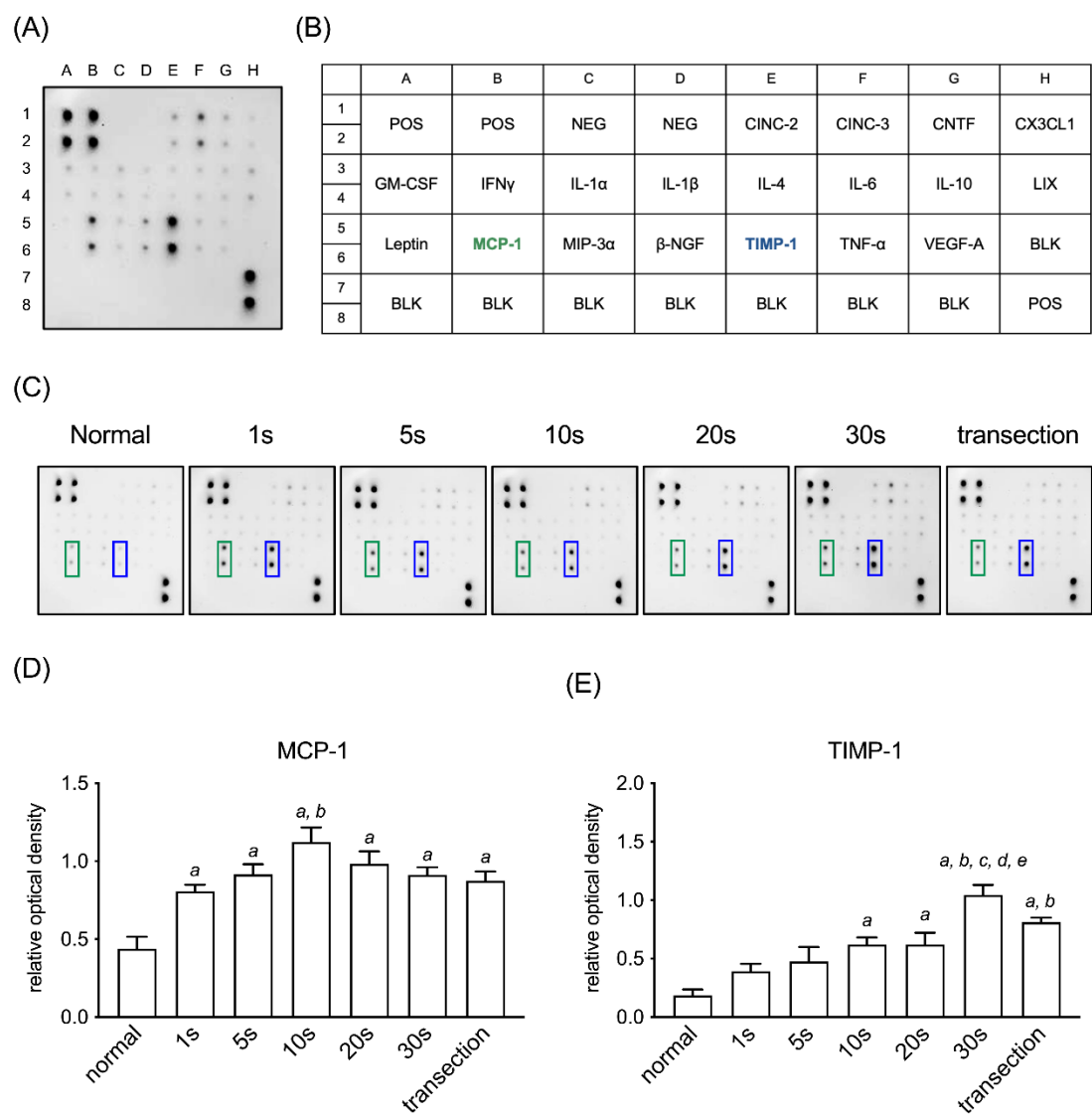


# Supplementary Materials: Characterizing the Impact of Compression Duration and Clip Deformation on Clip-Induced Spinal Cord Injury in Rats

Po-Hsuan Lee, Heng-Juei Hsu, Chih-Hao Tien, Chi-Chen Huang, Chih-Yuan Huang, Hui-Fang Chen, Ming-Long Yeh and Jung-Shun Lee



**Figure S1.** Effects of compression duration on cytokine levels in the spinal cords of rats with SCI induced by clip compression. (A, B) The map of antibody array. POS: positive control; NEG: negative control; CINC-2: cytokine-induced neutrophil chemoattractant-2; CINC-3: cytokine-induced neutrophil chemoattractant-3; CNTF: ciliary neurotrophic factor; CX3CL1: C-X3-C motif chemokine ligand 1; GM-CSF: granulocyte macrophage-colony stimulating factor; IFN $\gamma$ : interferon- $\gamma$ ; IL-1 $\alpha$ : interleukin-1 $\alpha$ ; IL-1 $\beta$ : interleukin-1 $\beta$ ; IL-4: interleukin-4; IL-6: interleukin-6; IL-10: interleukin-10; LIX: lipopolysaccharide-induced CXC chemokine; MCP-1: monocyte chemoattractant protein-1; MIP-3 $\alpha$ : macrophage inflammatory protein-3 $\alpha$ ;  $\beta$ -NGF:  $\beta$ -nerve growth factor; TIMP-1: tissue inhibitor of metalloproteinase-1; TNF- $\alpha$ : tumor necrosis factor- $\alpha$ ; VEGF-A: vascular endothelial growth factor A; BLK: blank. (C) Representative micrographs for antibody arrays. The green and blue frames indicated the signals of MCP-1 and TIMP-1, respectively. (D) Quantitative results of the MCP-1

expression in the spinal cords of rats with SCI induced by clip compression with varying compression durations. (E) Quantitative results of the TIMP-1 expression in the spinal cords of rats with SCI induced by clip compression with varying compression durations. <sup>a</sup>p < 0.05, vs. normal, <sup>b</sup>p < 0.05, vs. 1 sec, <sup>c</sup>p < 0.05, vs. 5 sec, <sup>d</sup>p < 0.05, vs. 10 sec, <sup>e</sup>p < 0.05, vs. 20 sec.