

Supplementary information

Combining MSC Exosomes and Cerium Oxide Nanocrystals for Enhanced Dry Eye Syndrome Therapy

Ying Tian 1[#], Yiquan Zhang 1[#], Jiawei Zhao 1, Fuxiao Luan 1, Yingjie Wang 1, Fan Lai 2,
Defang Ouyang 3, Yong Tao 1*

Content

Supplementary Figure S1. Cytotoxicity study of MSCExo-Ce

Supplementary Figure S2. Distribution of MSCExo and MSCExo-Ce in vivo

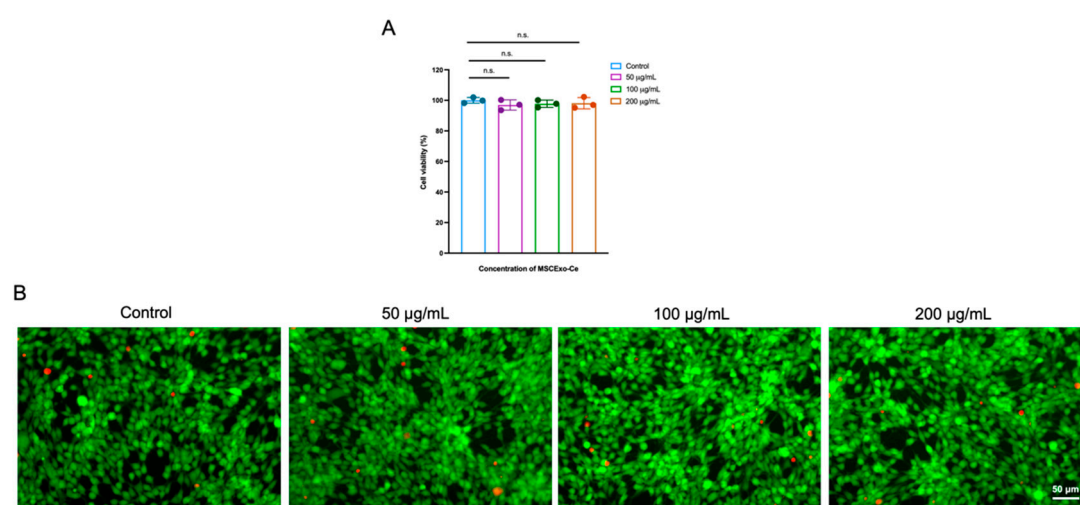


Figure S1. Cytotoxicity study of MSCExo-Ce

- A. Viability of HCECs treated with different concentrations of MSCExo-Ce. Data are presented as the mean \pm SD and are assessed via one-way ANOVA. (n.s. means not significant)
- B. Live/dead analysis of HCECs treated with different concentrations of MSCExo-Ce. (green: live cells, red: dead cells). The scale bar is 50 μ m.

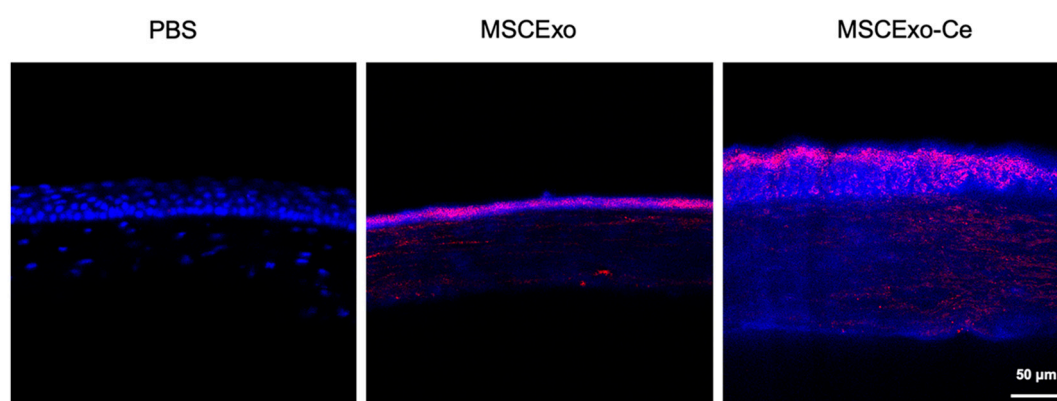


Figure S2. Distribution of MSCExo and MSCExo-Ce in vivo

Confocal laser scanning microscope (CLSM) images of distribution of MSCExo or MSCExo-Ce in the ocular surface of mice (red: Cy5-labelled MSCExo or MSCExo-Ce, blue: DAPI-labelled cell nucleus). The scale bar is 50 μ m.