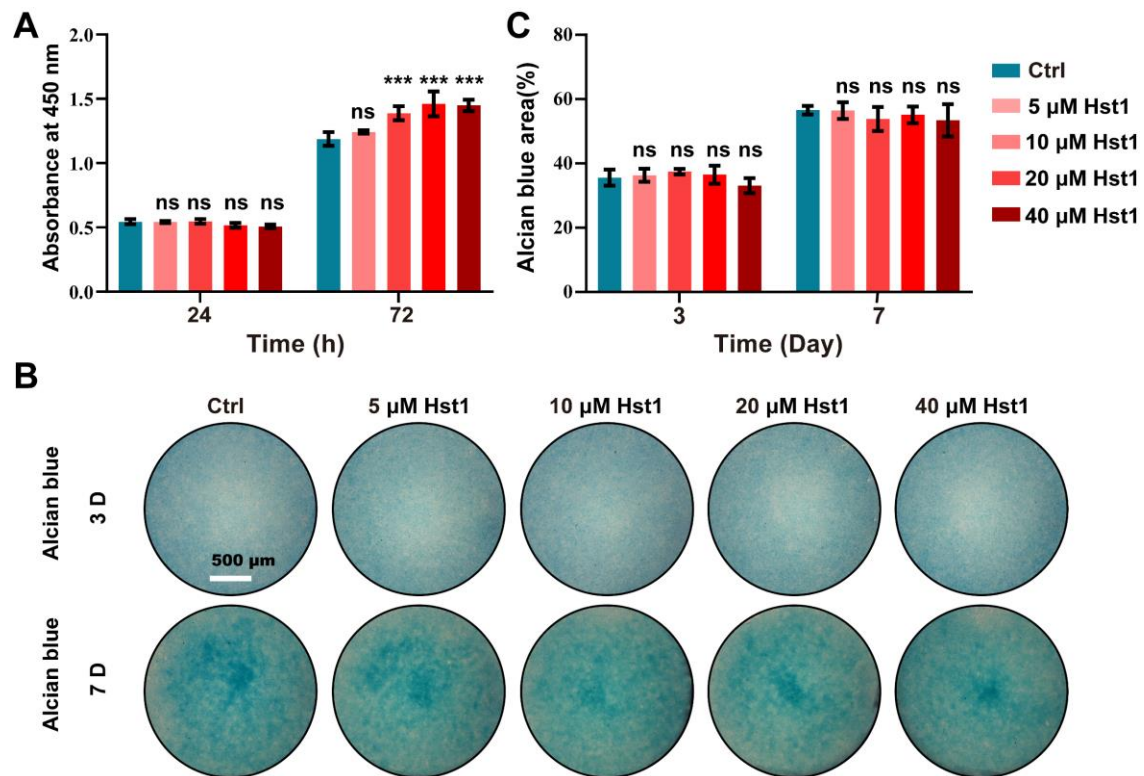


Supplementary Figure S1

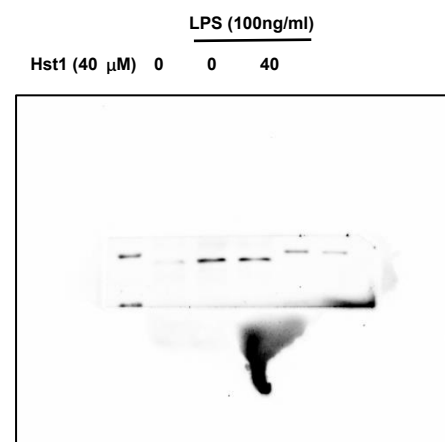


Supplementary Figure S1. Effects of Hst1 on metabolic activity and chondrogenic differentiation of ATDC5 cells. (A) CCK8 assay was used to detect the effect of Hst1 on the metabolic activity of ATDC5 cells, $n=5$. (B) and (C) After ATDC5 cells were cultured with Hst1 for 3 and 7 days, Alcian blue was used for staining and quantitative analysis, $n=3$, scale bar = 500 μ m. Data are expressed as mean \pm SD. (***: $p < 0.001$ compare with control group. ns = no significant).

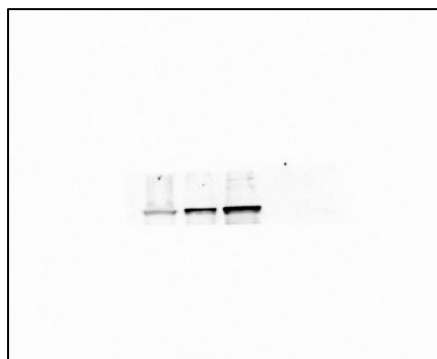
files for review purpose

file S1

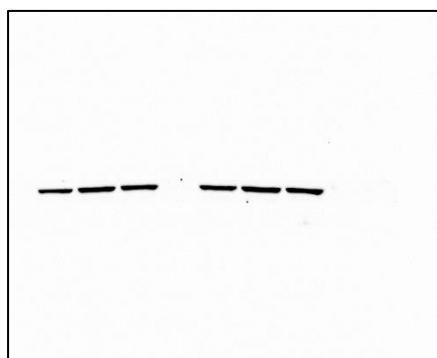
Uncropped blot images presented in Figure 4E



WB (CD86)



WB (CD206)

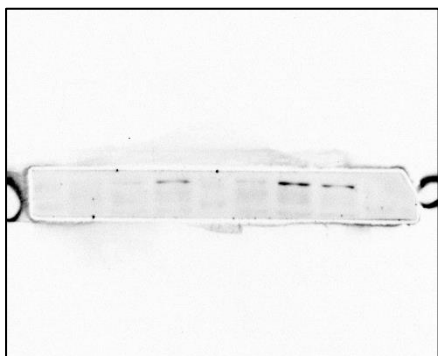


WB (β -actin)

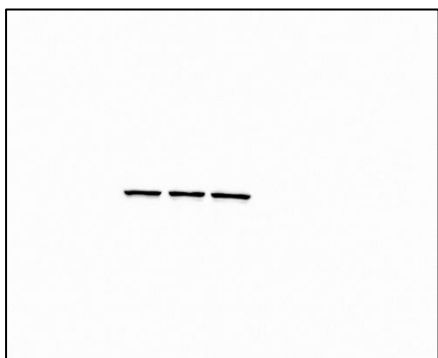
file S2

Uncropped blot images presented in Figure 7A and 7B

LPS (100ng/ml)
Hst1 (40 μ M) 0 0 40



WB (pNF-κB)



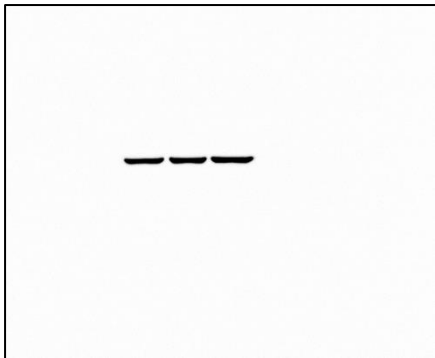
WB (NF-κB)



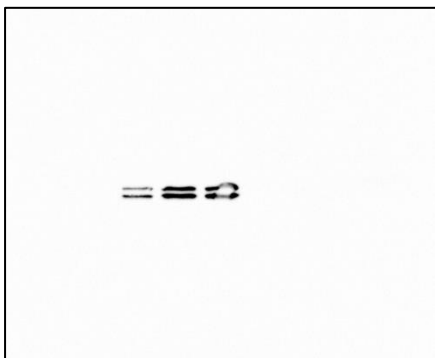
WB (pIKB-α)



WB (IKB-α)



WB (β-actin)



WB (pERK)



WB (ERK)



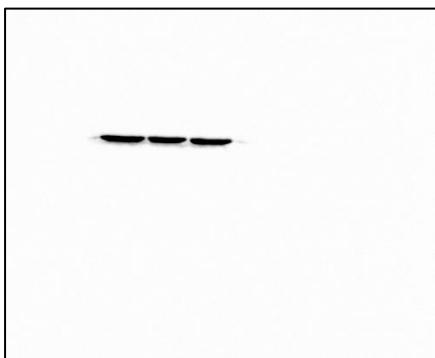
WB (pJNK)



WB (JNK)



WB (pP38)



WB (P38)

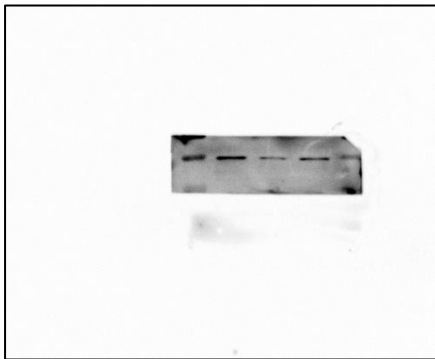


WB (β -actin)

file S3

Uncropped blot images presented in Figure 9B and 9C

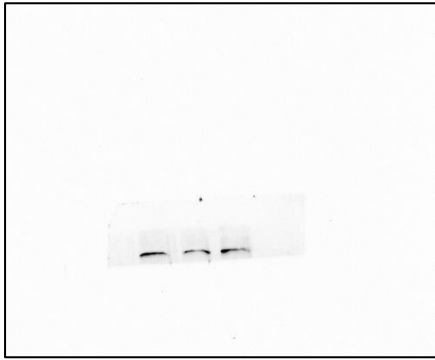
Ctrl-CM LPS-CM LPS+Hst1-CM



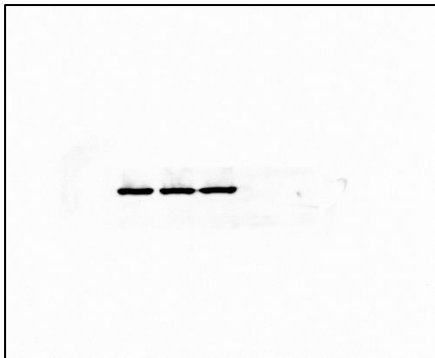
WB (Col-2)



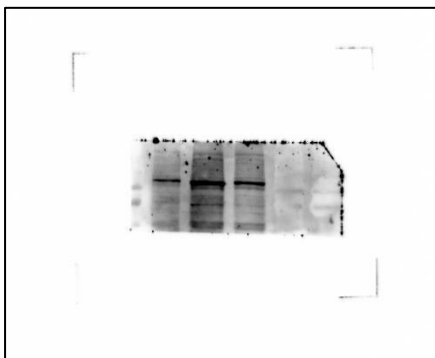
WB (Sox-9)



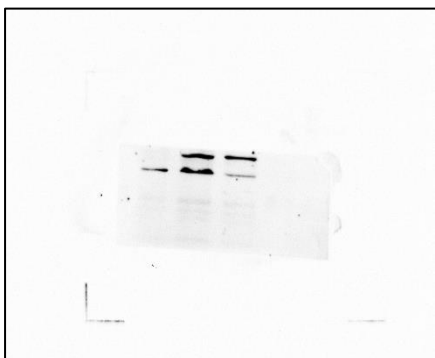
WB (AggreCAN)



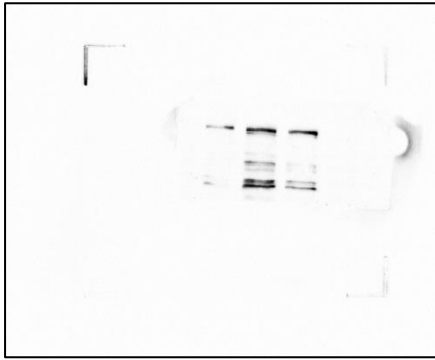
WB (β -actin)



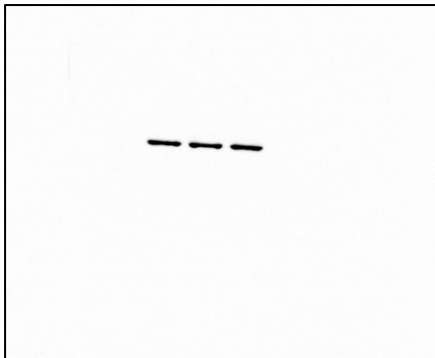
WB (MMP-2)



WB (MMP-3)



WB (MMP-9)

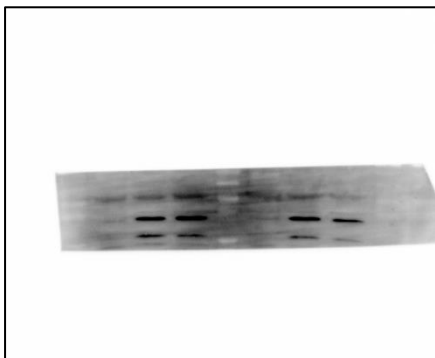


WB (β -actin)

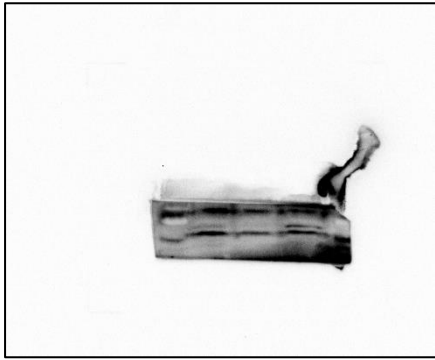
file S4

Uncropped blot images presented in Figure 10 D

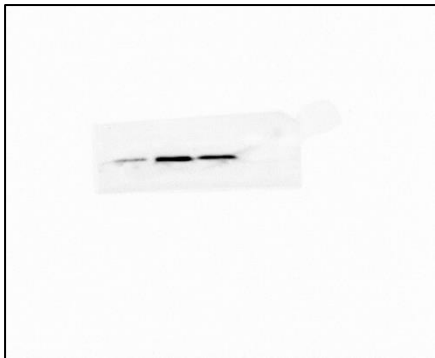
Ctrl-CM LPS-CM LPS+Hst1-CM



WB (Clev-Caspase3)



WB (Bcl-2)



WB (Bax)

