

Supplementary Information

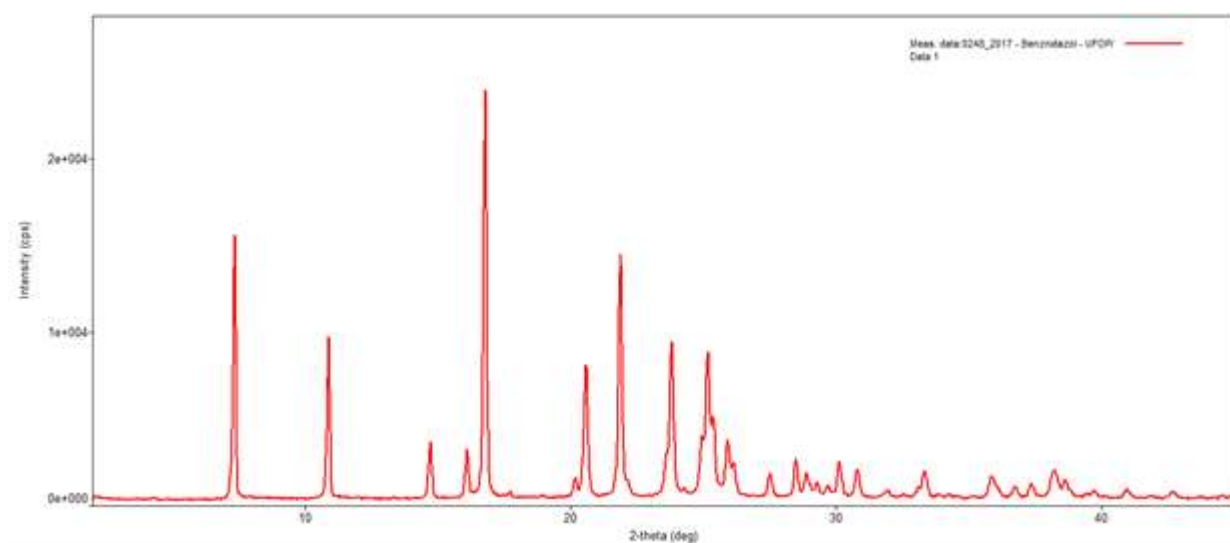


Figure I: X-ray diffraction patterns of benznidazole.

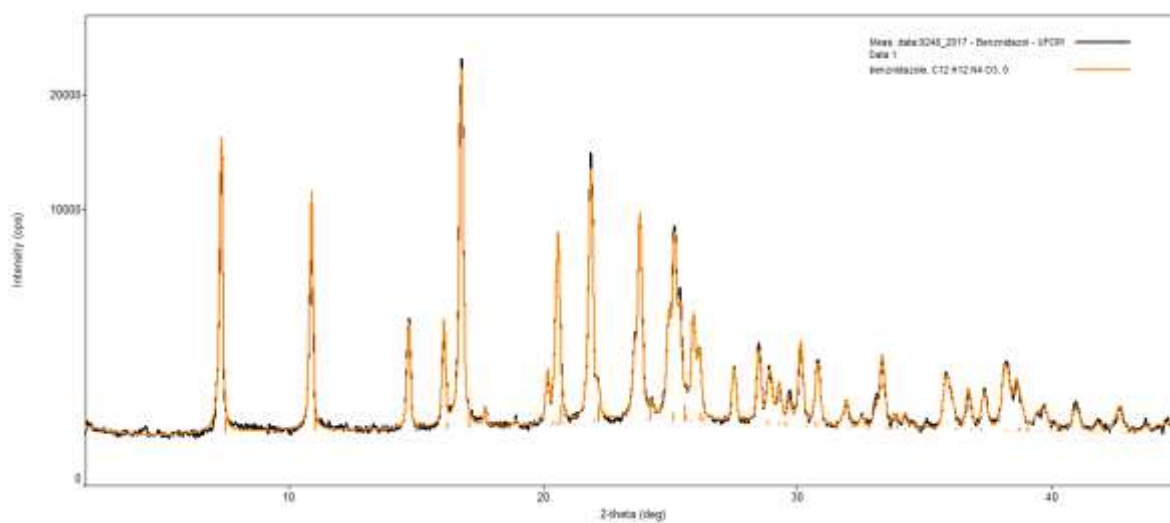


Figure II: X-ray diffraction patterns of benznidazole refined by the *Rietveld* method (black), using the crystallographic data described by Soares-Sobrinho et al. (2008) [18] (orange).

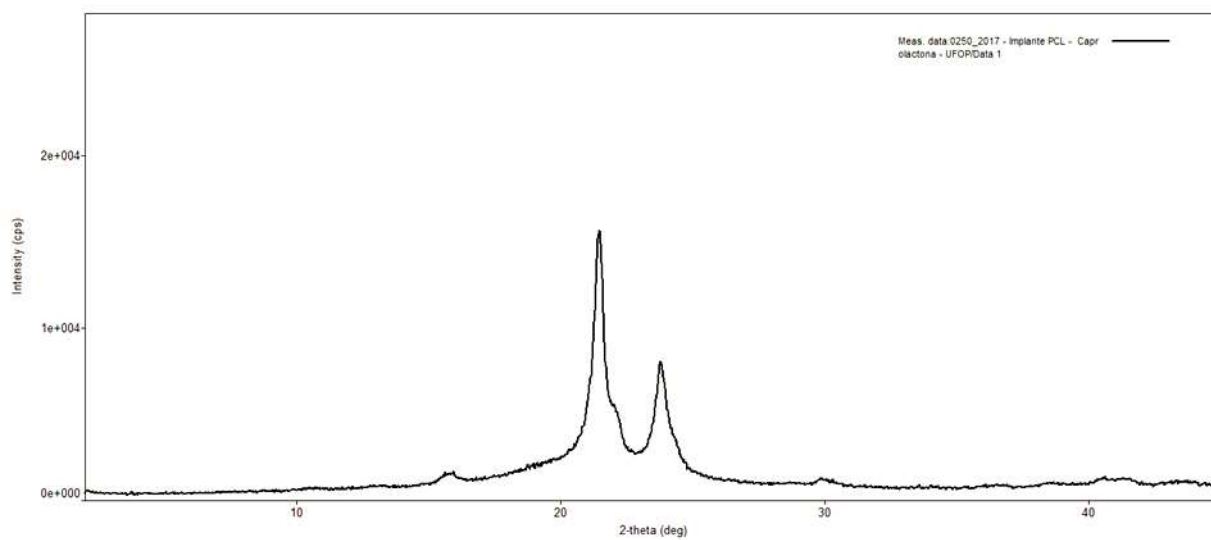


Figure III: X-ray diffraction patterns of PCL implant (without drug)