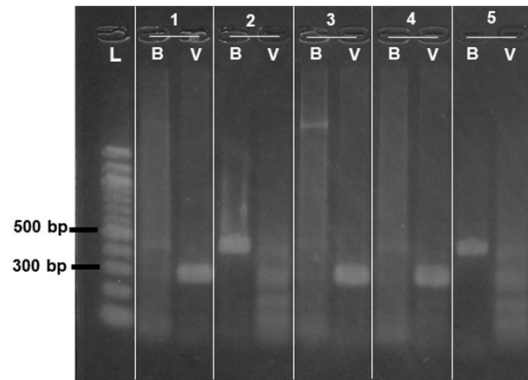
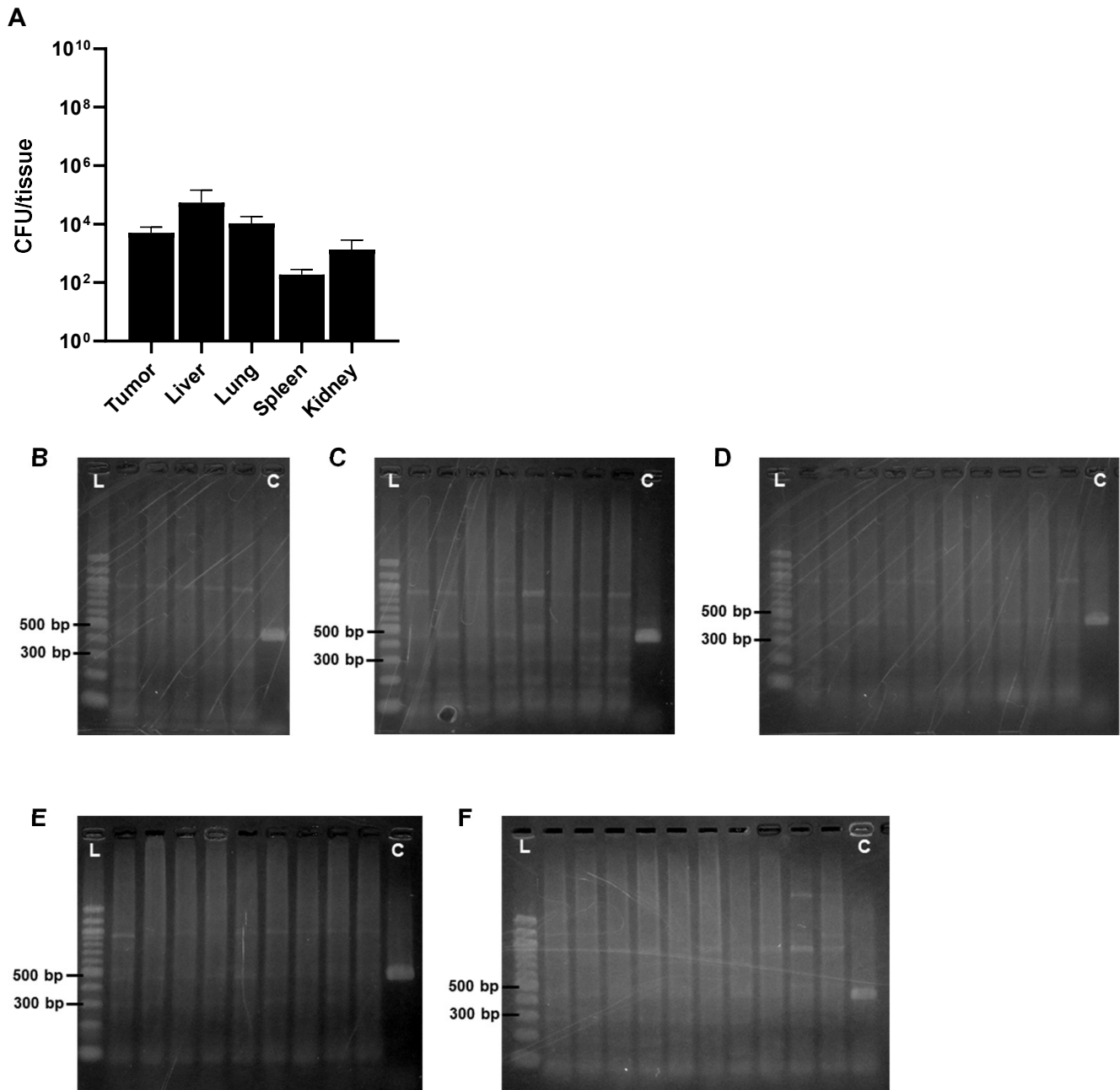


Supplementary Fig. S1



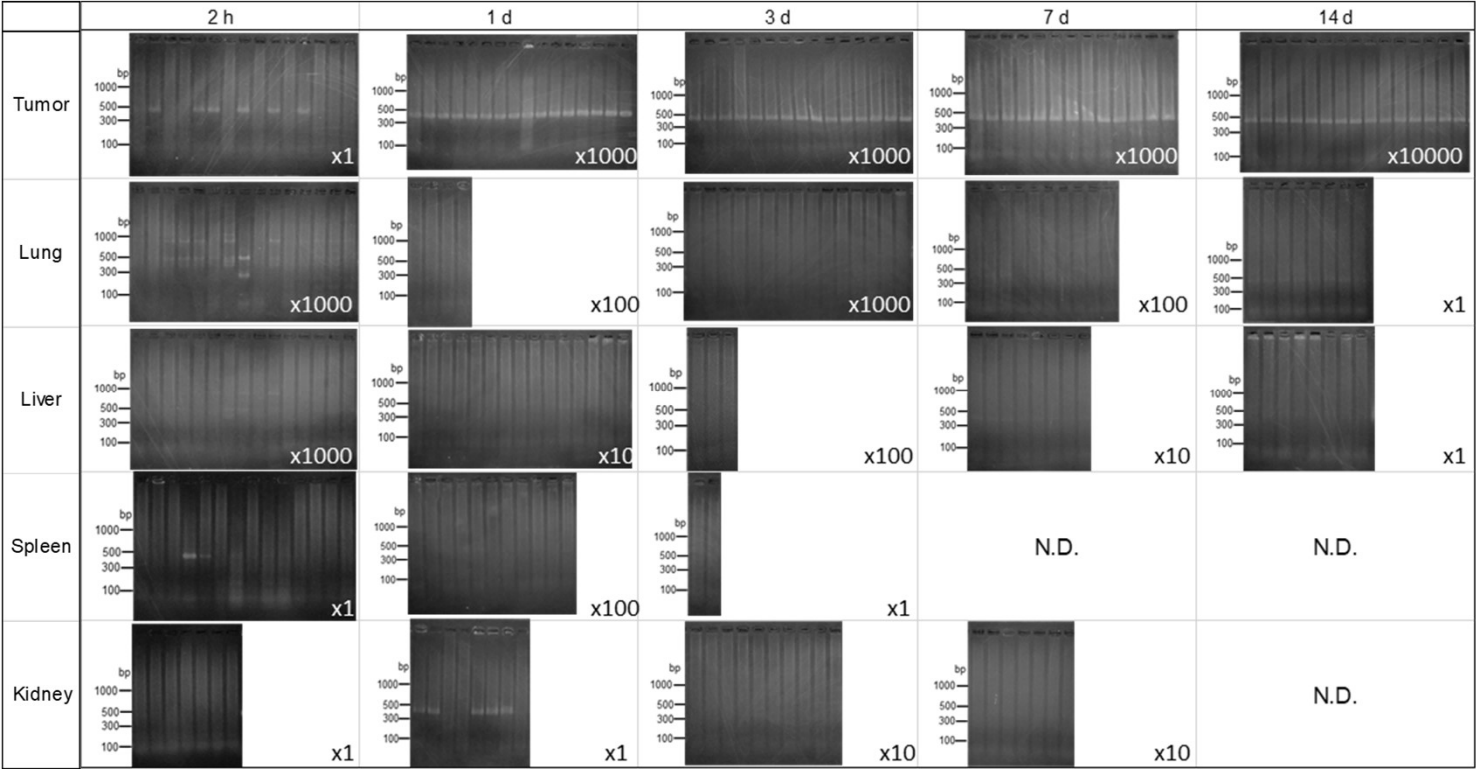
Agarose gel electrophoresis images with 16S rRNA gene PCR amplicons of five colonies picked from an agar plate seeded with a mixture of *B. coccoides* and *B. vulgatus*. PCR amplicons by primers corresponding to *B. coccoides* and *B. vulgatus* were loaded in lane B and lane V, respectively. The number in the figure indicates each colony.

Supplementary Fig. S2



The number of anaerobic bacteria originally present in the tissues of tumor-bearing mice. (A) CFUs of bacteria on the agar plates seeded with homogenates of tumors and major organs and cultured anaerobically. Each value represents the mean \pm standard deviation (SD) ($n = 3$). (B–F) SYBR® GREEN stained agarose gel electrophoresis images applied with 16S rRNA gene PCR amplicon by primers for *B. coccoides*. Colonies were picked from agar plates seeded with homogenates of (B) tumors ($\times 10$ dilutions), (C) kidney ($\times 10$ dilutions), (D) lung ($\times 100$ dilutions), (E) liver ($\times 100$ dilutions), and (F) spleen ($\times 10$ dilutions). PCR amplicons of cultured *B. coccoides* were loaded in lane C as a positive control.

Supplementary Fig. S3



SYBR® GREEN stained agarose gel electrophoresis images of 16S rRNA gene PCR amplicons of colonies picked from agar plates seeded with diluted tissue homogenates. Tumors and tissues were extracted from colon-26 tumor-bearing mice receiving *B. coccoides* (1.5×10^7 CFU). The numbers at the bottom right indicate the dilution factor of the homogenate of each organ.